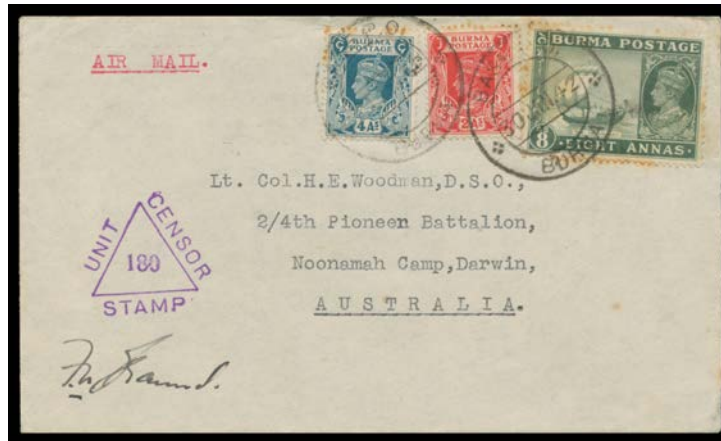


Lot Type Grading Description

Est \$A

**COMMONWEALTH OF AUSTRALIA - Military & Censor Mail****Lot 328**

**328** C A- **WORLD WAR II:** 1943 (Jan 30) cover to "Noonamah Camp, Darwin" with Burma 2a 4a & 8a tied by 'BASE PO/BURMA' cds, superb Unit Censor h/s & signed "FNBraund", the flap endorsed "Mission 204", minor toning on the perfs, with corresponding short typed letter. *Ex Russell Stern*. [In Feb 1942, the 2 officers & 43 men of "Tulip Force", with 6 tons of equipment, drove 2500 miles along the Burma Road into China, then trekked into the mountains. The members of *Mission 204* were to train Chinese soldiers in guerilla tactics against the Japanese. However, the Chinese refused their aid & after 7 fruitless months the project was abandoned]

250

**SOUTH AUSTRALIA****Lot 527**

**527** G B **DEPARTMENTALS:** 'B.G.' of Botanic Gardens on Perf 10xRouletted 1/- brown, separation faults at the sides. Rated RRR. [A very fine example sold at the *Prestige* auction of 22.4.2006 for \$460].

150

**FRENCH COMMUNITY**

See also Lots 20, 965 and 1027.

857 P A **ALGERIA:** 1993 Flowering Trees complete set of imperforate colour separations for the three denominations affixed to a single page from the printer's records. *Ex Courvoisier Archives*. (18 proofs)

350

**LATIN AMERICA****Ex Lot 907**

**907** P A **EL SALVADOR:** 1960 Christmas (Flowers) complete set of imperforate colour separations for the eight standard denominations plus the 40c & 60c that were issued only in miniature sheet format, affixed to eight pages from the printer's records. *Ex Courvoisier Archives. (119 proofs)*

1,250

**NEW GUINEA - Australian Stamps Used in New Guinea****Lot 958**

**958** C (B) **1914** cover to Sydney with 1d Roo (faults) tied by straight-line 'Herbertshöhe' h/s (*Powell #11*) in violet, endorsed "Herbertshoe [*sic*]/Garrison" at upper-left & self-censored with "Censored/BT Goadby/Lieut RAS/oc Lands & Survey" at lower-left no other markings, minor blemishes. *Ex "Ello"*. [The sender, later *Lt-Col Bede Theodor Goadby*, was a noted Australian botanist after whom a genus of orchid was named in the 1920s]

500

---

Lot	Type	Grading	Description	Est \$A
-----	------	---------	-------------	---------

---

**NORFOLK ISLAND**

983	**	A B1	<b>1966 Decimal Surcharges</b> '25c' on 2/5d Passionflower with the <i>Surcharge Misplaced to Left</i> marginal block of 4 from the base of the sheet, unmounted.	200
-----	----	------	---	-----

---