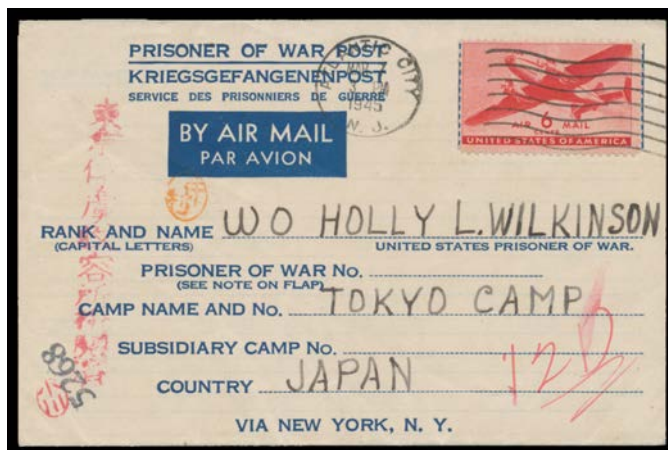


Lot Type Grading Description

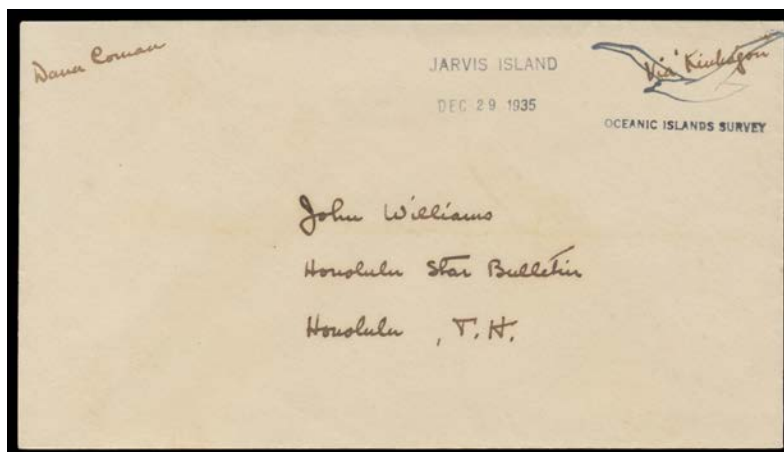
Est \$A

UNITED STATES OF AMERICA**Lot 1348****1348** C

A

1945 Prisoner of War Post lettersheet sent airmail to US serviceman at "Tokyo Camp, Japan" with single franking Transport 6c red tied Atlantic City, New Jersey cancel of 7 May paying the forces concessional airmail rate, red crayon "12D" endorsement for delivery to Motoyama (Hitachi) Camp, censored with black '5268' US censor cachet, red "Tokio Fu Ryo Shu Yo Sho Ken'etsu Zumi" [= Tokyo POW Camp Censored] cachet and two oval individual censor cachets alongside, fine condition. [Motoyama (Hitachi) Camp near Osaka was a labour camp for the Moto Yama mines opened in April 1944 with around 300 men transferred from the Bilibid Prison Camp in the Philippines: see also Lots 1318 & 1319]

400

**Ex Lot 1349****1349** C/CL

Bundle of mostly American 1930s flight covers many with Hawaiian connection & including 1931 Wiley Post Round the World flight per "Winnie May" and 1935 San Francisco-Guam registered with first flight cachet in green, condition variable; 1942 pages from PG Taylor's flight notebook re a "Sneak Flight Pearl Harbor-San Diego" apparently undertaken despite a weather alert; 1935 plain covers with 'On Board/MY Kinkajou/Oceanic Islands Survey' imprint on the flap & endorsed "Via Kinkajou" with '[albatross]/OCEANIC ISLANDS SURVEY' cachet, additionally with 'HOWLAND ISLAND/NOV 30 1935', 'BAKER ISLAND/DEC 2 1935' or 'JARVIS ISLAND/DEC 29 1935' cachets, each signed by the skipper "Dana Cowan"; and 1939 First Trans-Pacific Mail by Outrigger Canoe cover. **(50 approx)**

400^T

1350 Ω*

1893 Columbus 1c to 50c Scott #230-240, some reperforating is suspected & most (all?) have been regummed, Cat \$US1400 (mint); and 1926 White Plains sheetlet (square corners) with Plate Number 18773, some gum loss (not thinning) in the lower margin but the stamps are all unmounted, Cat \$US375 (mounted). **(11 + M/S)**

250

UNITED STATES OF AMERICA (continued)

Lot Type Grading Description

Est \$A



Lot 1351

1351	CL		FLIGHT COVERS: 1935 (Jan 11) Honolulu-Oakland cover (241x114mm) endorsed "Carried by air/..." and signed by the pilot "Amelia Earhart" at upper-left and "No.34 of 49 covers" at lower-left, small repaired tear at right. [<i>Amelia Earhart</i> was the first woman to make this non-stop flight solo. She was one of the most illustrious aviators of the pre-WWII period]	1,200 ^T
1352	C	A	ARCTIC: 1931 (May) <i>Wilkins-Ellsworth Trans-Arctic Submarine Expedition</i> covers each with cachet in purple & straight-line "NEW YORK TO NORTH POLE" or "NEW YORK TO SPITSBERGEN" cachets & with additional frankings of GB 1½d or Norway 10o & 20o. (2)	180 ^T