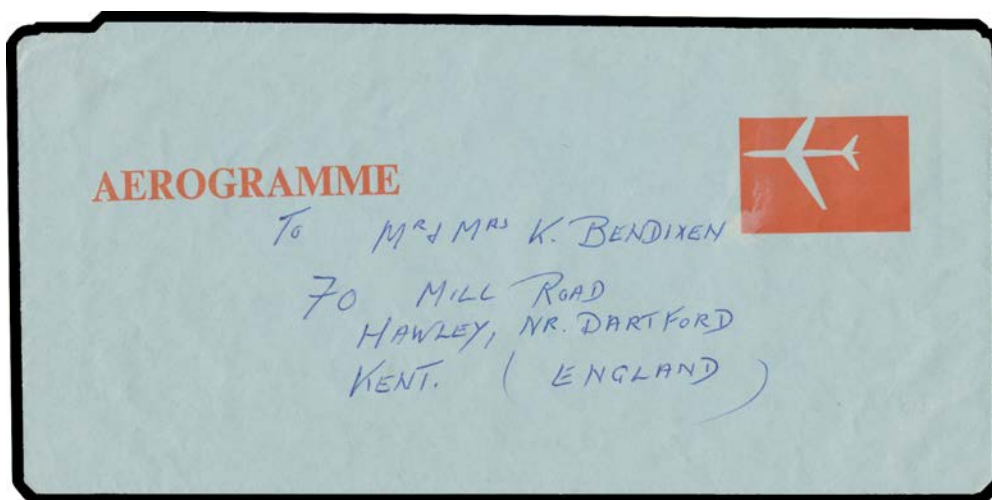


Lot	Type	Grading	Description	Est \$A
-----	------	---------	-------------	---------

MISCELLANEOUS LOTS

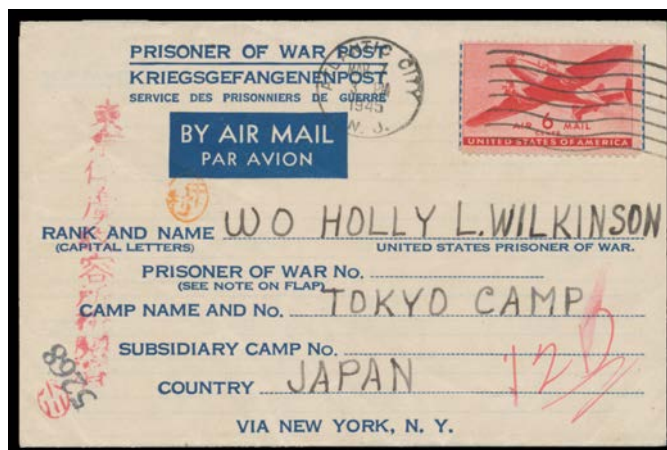
8	CPS		Carton with eight albums of Australian Territories FDCs, and Australian Aerogrammes & PSEs. (100s)	150
23	*ΩO		Carton of "Cinderellas" including Australia WWI <i>Liberty Loan</i> labels x10 unused, New Zealand 1906 Exhibition unused set of 7, lots of airmail types etc, Revenues including South Australia <i>Swine Duty</i> six values to 10c mint, Australian Railway stamps, lots of Aerogrammes including for Australian exhibitions, a few Zeppelin items, etc. (100s)	350
30	CPS	A/B	Five attractive trans-Atlantic pre-stamp/stampless entires with very fine markings (one to Holland), 1863 American Civil War 'CERTIFICATE OF EXEMPTION...ON ACCOUNT OF DISABILITY', Boer War cover from 'PETRUSBURG' to Green Point Prisoners of War Camp, and Australia 7d 'AIR LETTER' with <i>Ungummed Sealing Flap</i> for use in PNG (very fine unused, Cat \$500). (8 items)	400

COMMONWEALTH OF AUSTRALIA - Postal Stationery**Lot 538**

538	PS	A-	AEROGRAMMES: 1971 Long Format 10c with <i>All Inscriptions</i> ('AUSTRALIA', '10c', <i>Address Lines</i> , <i>Sealing Instructions</i> and <i>Instructions on the Reverse</i>) <i>Completely Omitted</i> , to England with full social message & hand-written address on the reverse, a couple of insignificant blemishes. One of the most outstanding Aerogramme errors we have seen. <i>Ex Jerry Kasper</i> . [Virtually all major aerogramme errors are unused, having been "rescued" by post office staff or collectors. It might be thought that this item has not been through the mail but our belief is that it was flown. The absence of a postmark suggests the automated cancelling machine rejected it because there was no value indicium]	500
-----	----	----	---	-----

PAPUA NEW GUINEA

1314	C/PS	A/A-	1940s-1990s covers including Australia used in PNG with registered covers from Buin, Lae (2), Moresby and Rabaul, PNG Pictorials to 2/- on covers to USA, Austria and Germany, Butterflies 10c single on airmail cover to Solomons, 1970's <i>Gibson</i> Paquebot covers, a few aerogrammes, postmark interest including 'BADILI', 'CAPE RODNEY', 'DOGURA' and 'KAGUA' all on covers with red/black registration labels, 'KAWITO', 'MALAHANO', 'MILFORDHAVEN', 'MUMENG' and 'RABAU AIRPORT'; also Papua <i>Lakatois</i> 1½d pair on cover to USA and 2d on part-cover to WA, 1936 airmail to Denmark with New Guinea Birds 1/- & 9d 'AIR MAIL' overprints; condition generally fine. (76)	300
------	------	------	---	-----

UNITED STATES OF AMERICA**Lot 1348**

1348	C	A	1945 Prisoner of War Post lettersheet sent airmail to US serviceman at "Tokyo Camp, Japan" with single franking Transport 6c red tied Atlantic City, New Jersey cancel of 7 May paying the forces concessional airmail rate, red crayon "12D" endorsement for delivery to Motoyama (Hitachi) Camp, censored with black '5268' US censor cachet, red "Tokio Fu Ryo Shu Yo Sho Ken'etsu Zumi" [= Tokyo POW Camp Censored] cachet and two oval individual censor cachets alongside, fine condition. [Motoyama (Hitachi) Camp near Osaka was a labour camp for the Moto Yama mines opened in April 1944 with around 300 men transferred from the Bilibid Prison Camp in the Philippines: see also Lots 1318 & 1319]	400
------	---	---	--	-----