

Lot Type Grading Description

Est \$A

**WESTERN AUSTRALIA**



**Ex Lot 474**

474	Ω*O		Selection with an apparently unused <b>Rouletted</b> 1d black SG 2 (small fault at upper-left, Cat £4000 if genuine), Lithos 4d unused (stained apparently with traces of o.g.), Hillman Lithographs 2d <i>Printed on Both Sides</i> , very fine Imperf 6d sage-green SG 28, Perf Swans including 4d vermilion SG 40 x2 (one unused), Telegraphs 1d & 6d SG T1a & 2 unused, Coolgardie Cycle Express 1/- & 2/6d with large-part o.g. & Camel set (no gum, the 5/- faded), etc, condition variable. <b>(47)</b>	1,000
475	O		Basic collection with a few better stamps including 4d Litho with full margins & BN '20' cancel, 4d carmine SG 84 (unused), 10/- x2 & £1, punctured 'WA' to 5/- & 'OS' to 2/6d, Postal Fiscals to 1/-, etc, lots of duplication of lower denominations, condition variable. <b>(few 100)</b>	500



**Ex Lot 476**

476	*O		Range on <i>Hagners</i> including a fine Imperf 6d green with full margins, good range of Middle Issues with Numerals & other cancels, V/Crown 1d mint pair with <i>Official Scissor-Cut/Repair</i> , 2/- vermilion/yellow & 2/- with the <i>Watermark Sideways</i> x2 (one punctured 'OS'), official punctures 'WA' to 2/- including 2d with <i>Double 'WA'</i> and 'OS' to 2/-, also 3d with 'Medical' Handstamp, commercial perfins 'GDCo' on 4d & 'PWD' on 1/-, and WWI 'RAOB/GSB/TO AID/RED CROSS FUND/WESTERN AUSTRALIA' label (unused), etc, generally fine to very fine. A good lot. <b>(82)</b>	500
477	*O		Collection with a few scrappy imperfs, later Swans with better values, a few Commissariat Punctures & 'ONE PENNY' on 2d forgery, V/Crown to 10/- plus Perf 11 1d 2d & 5d, Crown/A to 5/- plus Perf 11 9d, Postal Fiscals to 1/-, a few are mint, condition variable but most are fine to very fine. <b>(150 approx)</b>	400 <sup>T</sup>



**Lot 478**

478	Ω	(A)	<b>1854 Black Swan</b> Imperf 1d black SG 1, margins close to large, professional repair at lower-left, unused, Cat £1400. <i>David Brandon Certificate</i> (2013).	400
479	Ω	B	<b>1854-55 Lithographs</b> 4d blue SG 3a, a deep shade but not the "deep dull blue", good even margins, a little stained, Cat £450. <i>RPSofV Certificate</i> (2016).	200



**Lot 480**

**WESTERN AUSTRALIA (continued)**

Lot	Type	Grading	Description	Est \$A
480	Ω	A	- Imperf 1/- deep red-brown, grey-brown & pale brown SG 4a b & c, all with margins close to good, unused, Cat £3100.	2,000

**Lot 481**

481	F	A	- <b>Rouletted</b> 4d blue SG 5a, superb '2' cancel in blue of Perth; 1857-59 Hillman Lithographs 2d brown-black/red & 6d grey-black SG 20 & 23, '2' or '8' cancels; Cat £3900. Offered "as is". [The <i>bona fides</i> of these stamps are always questioned by some collectors & we can't guarantee that the roulettes are kosher. However, all three examples are large enough - the 4d with a fragment of the adjoining unit at left - to support them being genuine] <b>** A client has shown us a scan of the 2d before it had faked roulettes added. A lovely stamp ruined! And, yes, we know who the culprit is! Estimate/reserve reduced to \$500/\$380 **]</b>	500
-----	---	---	--	-----

**Lot 482**

482	F	A-/A	<b>1857-59 Hillman Lithographs</b> Imperf 6d black-bronze SG 18 with virtually full margins - just shaved at the base - & a fragment of the adjoining unit above, "Snake on Breast" flaw; and 6d grey-black SG 19 with good even margins; Cat £1200. <b>** A client has advised us that the right-hand stamp - with the void grid - has had margins added. Estimate/reserve reduced to \$400/\$300 **]</b>	400
-----	---	------	--	-----

**Lot 483**

483	*/**	A	<b>1888 New Colours</b> 4d brown-red SG 105 block of 4, large-part o.g. with the lower units being unmounted, Cat £320++ (mounted).	340 <sup>T</sup>
-----	------	---	---	------------------

WESTERN AUSTRALIA (continued)

Lot Type Grading Description Est \$A



Lot 484

484 P A 1896 Proposed New Designs 6d die proof in black on glazed card (92x60mm) with '22DEC1896' and 'AFTER/STRIKING' Handstamps and initialled: see ACSC #W2DP(1)B, Cat \$4000. [The ACSC states "only one example...can be traced"]

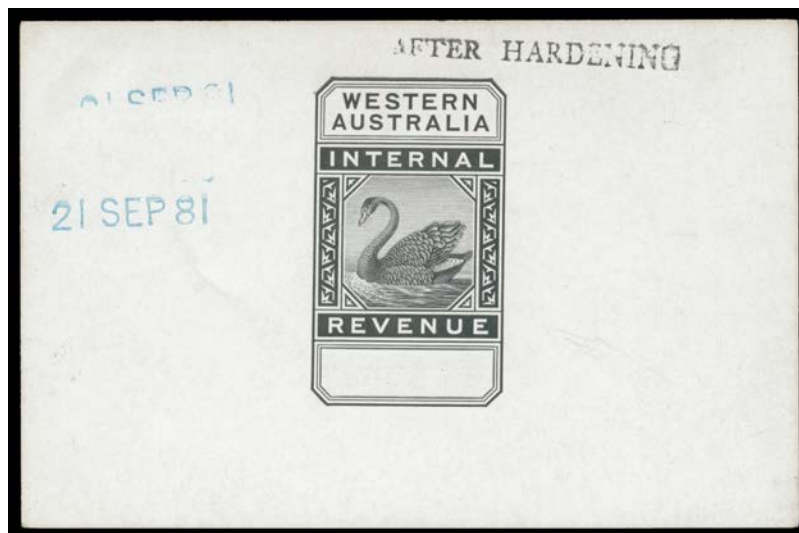
2,000<sup>T</sup>



Ex Lot 485

485 \* A 1902-11 V/Crown 1d to £1 SG 117-128 plus 10/- bright purple SG 127a, the 5d aged, Cat £2000+. (13)

1,200



Lot 486

486 P A+ REVENUES: 1882 Internal Revenue master die proof for the pence values with blank value tablet in black on highly surfaced card (92x61mm) with '21SEP81' & 'BEFORE HARDENING' Handstamps. Superb! Ex De La Rue Archives. [Francis Kiddle's similar proof sold at the Prestige auction of 23.9.2011 for \$2760]

1,750<sup>T</sup>

487 O\*\* A/A- RAILWAY STAMPS: 1905-06 Small Design 1/- marginal strip of 3 & 2/6d; and 1907-23 Large Design 3d (\*\*), 6d scarlet (2, shades), 9d emerald (2, shades) & 2/6d, generally very fine. (10)

250

**WESTERN AUSTRALIA (continued)**

Lot Type Grading Description Est \$A



**Lot 488**

488	C	A-	<p><b>FRANK STAMPS:</b> 'GLASGOW EXHIBITION COMMISSION/WESTERN AUSTRALIA' handstamp light but clear strike in violet on OHMS front with 7-line 'ROYAL COMMISSION/GLASGOW EXHIBITION 1901/WESTERN AUSTRALIA/...' imprint at lower-left. One of the rarest Australian Franks: <i>Hans Karman</i> recorded no dates of use.</p>	1,000
489	CPS	A/A-	<p><b>POSTMARKS:</b> 1970s-2000s datestamps on covers mostly airmail to overseas destinations with many single frankings, the occasional registered item, some postal stationery, advertising, taxed mail &amp; postcards, selected for clarity of strikes which are generally well above average including modern rubber types often on International Post issues. Good variety with minimal duplication. <b>(400+)</b></p>	400