

Lot Type Grading Description

Est \$A

**TPOs: MELBOURNE-PORT ALBERT**

The South Gippsland Line to Port Albert was completed by January 1892. Molnar & Waugh state at page 147 "formal TPO services did not commence...until 1898", using the re-allocated Numbers 2 and 7. However, as early as mid-1894, at least de facto TPO 20 & 21 services were operating, using manuscript postal markings. Molnar states TPOs 20 & 21 were shelved because of fiscal belt-tightening during the catastrophic economic depression of the mid-1890s.



Lot 430

**430** S A/B Manuscript cancellations in indelible pencil comprising "Up Train/13.6.94" on 1d pair, "TPO/Up/10 7 95" over BN '1917' of Stony Creek on 2d, and "D Train/14.8.94" on 2d (perf faults). The second is illustrated at page 91

250<sup>T</sup>

Lot 431

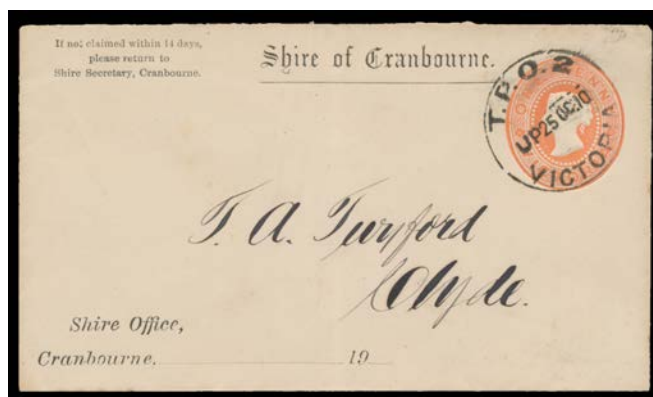
**431** S B A1 **UP TRAIN 21:** Manuscript "Up/TPO 21/19.7.94" in indelible pencil on *Naish* Redrawn 2d violet (light tonespots). This & the next lot are the only two such manuscript markings recorded that actually identify one of the "phantom" TPOs. Ex Max Watson.

250



Lot 432

**432** S A A1+ **DOWN TRAIN 21:** Manuscript "Down/TPO 21/22.6.94" in indelible pencil on *Naish* Redrawn 2d violet. One of only two such manuscript markings recorded that identifies one of the "phantom" TPOs. Illustrated at page 91.

250<sup>T</sup>

Lot 433

**433** PS A- A1 **UP TRAIN 2:** Type 2 ('TPO 2') largely superb cancel of 25OC10 on 1d Envelope with 'Shire of Cranbourne' header, to Clyde. Rated RRRR: eight examples on cover recorded. Clyde is only 6km SE of Cranbourne. The cover was apparently missorted, being sent on the Up Train to Dandenong, then returned to Clyde, making it very desirable double short-haul item. Illustrated at page 91. [Acquired at the *Prestige* auction of 2.9.2006 for \$437]

300<sup>T</sup>

**434** PS A A2 **DOWN TRAIN 2:** Type 1 (Duplex) largely very fine strike of 12FE06 on 1d pink Stamped-To-Order Envelope on pink stock for *TJ Noske Grain Merchant (Horsham)*, to the baker at Yarram with arrival duplex b/s. Pretty. Illustrated at page 90.

100<sup>T</sup>

**435** C A- A2 **UP TRAIN 7:** Type 2 ('TPO 7') very fine large-part cancel of 12JA10 on 1d pink on PPC of Korumburra to Adelaide. Rated RRRR: six examples on cover recorded.

200<sup>T</sup>

**TPOs: MELBOURNE-PORT ALBERT (continued)**

Lot	Type	Grading	Description	Est \$A
436	C	A A2	<b>DOWN TRAIN 7:</b> Type 1 (Duplex) largely very fine cancel of JY18/08 on 1d pink on PPC to Outtrim. Rated RRRR: five examples on cover recorded. [Outtrim, named after the then <i>Minister for Mines</i> , is 12km SSW of Korumburra in the Strzelecki Ranges. Coal was discovered locally in 1892 & the <i>Victorian Railways</i> sourced most of their coal needs from there for many years. The coal ran out before World War II & the settlement declined to the point where it became a virtual ghost town]	200 <sup>T</sup>

**Lot 437**

<b>437</b>	C	B A1	- Type 2 ('TPO 7') very fine cancel of 10NO10 on 1d pink on PPC (slightly trimmed at left & minor bends), to Jeetho. Rated RRRRR: only two examples recorded on cover. [Jeetho is 9km WNW of Korumburra]	250 <sup>T</sup>
------------	---	------	--	------------------

**Lot 438**

<b>438</b>	S	A A2	<b>GREAT SOUTHERN RAILWAY:</b> Double-circle "relief" datestamp 'G[T STHR]N UP TRAIN/11JA/06[VI]C' & 'GT [STHRN UP TR]AIN/JA16/06/VIC' very fine strikes on 1d pinks. Rated RRR+. Used to create the composite illustration at page 150. [David Wood's example on piece - the only complete strike recorded - sold for \$734. No covers are recorded]	400 <sup>T</sup>
------------	---	------	---	------------------