

Lot Type Grading Description

Est \$A

TPOs: MELBOURNE-WODONGA 1873-1932

383 PS A A1+ **UP TRAIN 5:** Type 2 (Duplex) superb cancel of MY28/85 on 1d Postal Card, Geelong transit and part 'GERMANTOWN' arrival b/s. Rated RR: the ERD on cover. [The message is headed "Kensington" which is part of North Melbourne, requiring TPO processing in the last mile of the route. The origin may have been "Kevington", near Jamieson, which could have allowed for carriage west to Seymour. Then again, the origin may have been "Kensington Hill" - 12km ESE of Geelong, on the Bellarine Peninsula - which was renamed Leopold Hill 1.7.1884, but then it shouldn't have gone anywhere near TPO 5! What fun! During World War I, Germantown was renamed Grovedale on 1.3.1916]

NB: In the Handbook, the TPO 5 Up Train markings are incorrectly numbered.

150^T

Lot 384

384 PS A- A1 - Type 2 (Duplex) very fine cancel of MR27/89 on 3d red/green Postal Card with message in Swedish, to Sweden but not uprated or taxed until arrival with manuscript "80" in blue & superb 'T'-in-inverted-triangle, largely very fine Swedish 'PXKP No 2 A...U' TPO cds, faint bends. Illustrated at page 66. [An excellent example of a relatively common postmark in uncommon circumstances: these cards paid the rate to the UK only via Italy. Additional postage was required to European destinations. Pre-1891 commercial usages are very scarce]

250^T

Lot 385

385 PS B B1- **DOWN TRAIN 5:** Type 1 (22½mm Octagon) light but discernible cancel of JN24/80 - and a clearer b/s - on 1d Postal Card with message headed "Nagambie", horizontal crease at base. Rated RRRR: seven covers recorded but most have backstamps only.

200^T

Lot 386

386 D A- A1+ - Type 2 (Duplex) superb cancellation of AU11/84 on Bell 1d green x2 on small piece. Rated RRRRR, being the earliest - and the only complete example - of only three recorded strikes, all on loose stamps. [Illustrated at page 71]

200^T

TPOs: MELBOURNE-WODONGA 1873-1932 (continued)

Lot Type Grading Description

Est \$A



Lot 387

- 387** PS A- A1 - Type 3 (23½mm Octagon) very fine cancellation of OC26/99 on 1d Postal Card with message headed "Cairnfield/Strath Creek", minor blemishes. Rated RRRRR, being the only recorded example on cover. [Illustrated at page 68]

300^T

Lot 388

- 388** C A- A1+ **UP TRAIN 6:** Type 1 (CDS with Colons before & after 'VICTORIA:') superb cancel of SE7/75 - & another exceptional b/s - on 'COMMR OF RAILWAYS & ROADS' Frank h/s in red - LRD in red by 20 months - on OHMS cover with 'VICTORIAN RAILWAYS/Office of Traffic Manager' imprint at L/L & endorsed "Wodonga", to "Urana/New South Wales/Via Deniliquin", 'ECHUCA' & 'DENILIKUIN' (NSW) transits & 'URANA' arrival b/s. A very desirable usage. Rated RRRR: only 6 covers recorded. [Absence of a Melbourne b/s indicates this was transferred at Seymour to the Down train for Echuca]

500^T

Lot 389

- 389** S A A3 - Type 3 (Duplex) very fine strike of the 'TPO/ 6 ' portion only on *Naish* Redrawn 2d violet. Rated RRRRR: the only recorded example. Illustrated at page 71. [It cannot be stated with certainty that this is an Up duplex, but that is far more likely than a Down type]

100^T

Lot 390

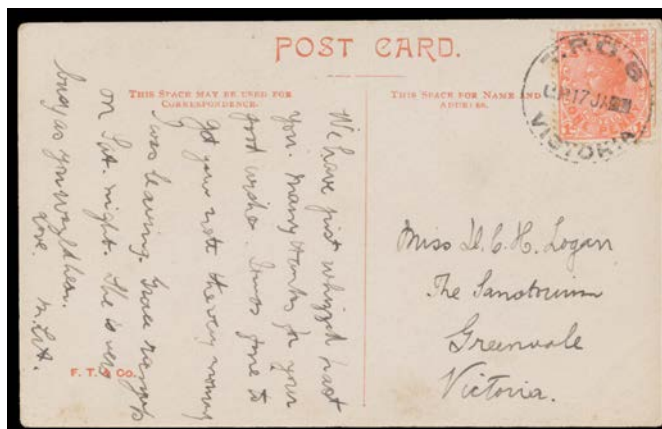
- 390** S A - Type 6a ('TPO 6' with 'UP' Wheel at Left) of 6AU13 (LRD) on 1d Roo; Type 6b ('TPO 6' with 'UP' Wheel at Right) of 30NO14UP (LRD) on KGV 1d red; and Type 7 ('TPO 6' with Arcs at Sides) superb strike of 19MR15 (ERD) on KGV 1d red. Rated C, RRR & S on stamps respectively.

100^T

TPOs: MELBOURNE-WODONGA 1873-1932 (continued)

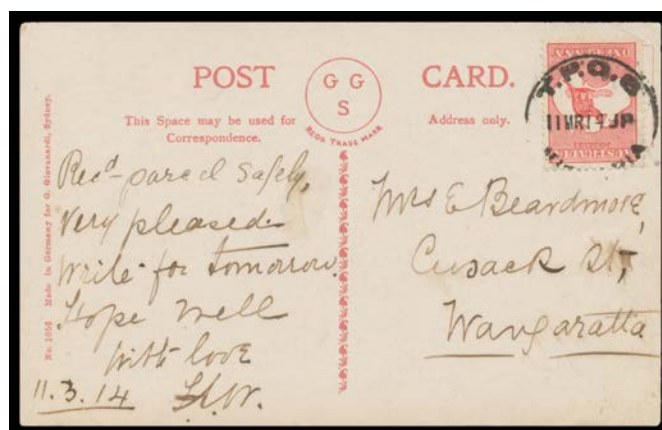
Lot Type Grading Description

Est \$A



Lot 391

- 391** C A A1- - Type 6a ('TPO 6' with 'UP' Wheel at Left) very fine cancel of 17JA-- on 1d pink on PPC to "Greenvale" with note "We have just whizzed past you..." indicating it was posted aboard the train. Rated RRRR: only 6 covers recorded. [Molnar & Waugh mistakenly state that the dates on Commonwealth pattern datestamps were "slugs". In fact, they were **wheels** (which means, technically, that all the Commonwealth Period entries for 'UP' & 'DOWN' types should technically be amalgamated as 'a' & 'b' sub-types rather than being assigned whole catalogue numbers). In this case, the year was accidentally set to "--"]

250^T

Lot 392

- 392** C A A2 - Type 6b ('TPO 6' with 'UP' Wheel at **Right**) very fine large-part cancel of 11MR14UP on 1d Roo on PPC to Wangaratta. Rated RRRRR, being the only recorded usage on cover. [Datestamps were regularly disassembled for cleaning. Occasionally, as here, they were reassembled with the wheels in the wrong order. Usage on stamps is recorded for 11½ months, strongly indicating the service was done annually. The fact that Type 6a is recorded between 1908 & 1913 proves that it is the same datestamp]

450^T

Lot 393

- 393** PS A+ B1 - Type 7 ('TPO 6' with Arcs at Sides) light but largely very fine cancel on "Star" Envelope 1d red to Melbourne. Rated RRRRR: the only recorded usage on cover. Illustrated at page 73.

400^T

TPOs: MELBOURNE-WODONGA 1873-1932 (continued)

Lot Type Grading Description

Est \$A



Lot 394

394 PS B B1 **DOWN TRAIN 6:** Type 1 (22mm Small Octagon) two light but obvious cancels of FE21/81 on 1d Postal Card with message headed "Wangaratta", to Melbourne with light 'WODONGA' transit & Melbourne arrival b/s, two small closed spikeholes & minor blemishes. Rated RR+: only two examples as cancels on cover recorded. [Wangaratta is 69km SW of Wodonga. Placed on Down train to Wodonga where placed on Up train to Melbourne. On this line, this was standard procedure, not a case of missent mail]

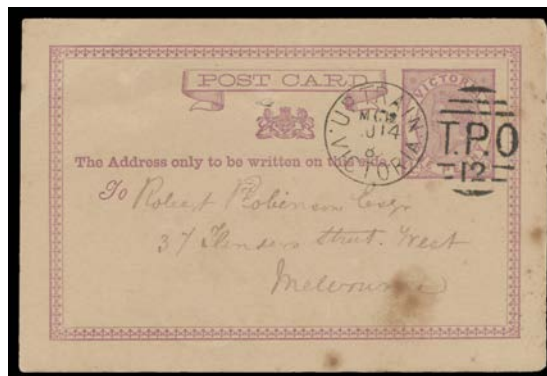
200^T

395 PS A A1 - Type 2 (27mm Medium Octagon) very fine cancel of JY2/02 on "Bantam" ½d Wrapper from Melbourne to *Reuter's Telegram Agency* in Sydney. [In 1898, TPO 6 was restricted to the Euroa-Benalla sector &, in 1904, it was assigned to the Benalla-Wodonga sector. In this period, only four covers are recorded. **NB:** the postmark illustrated at page 131 is too small & noted as 25mm only]

150^T

Lot 396

396 C A- A1+ - Type 3 ('TPO 4' with No Arcs) superb cancel of 22SE08 on PPC to Wangaratta. Rated RRRR: 8 covers recorded. [Illustrated at page 10]

250^T

Lot 397

397 PS B A1 **UP TRAIN 12:** Type 1 (Duplex) largely superb cancel of AU14/82 on 1d Postal Card with message headed "Benalla", to Melbourne, two small closed spikeholes & a bit soiled. Rated RRRRR: the earlier of only two covers recorded. Illustrated at page 66.

400^T

TPOs: MELBOURNE-WODONGA 1873-1932 (continued)

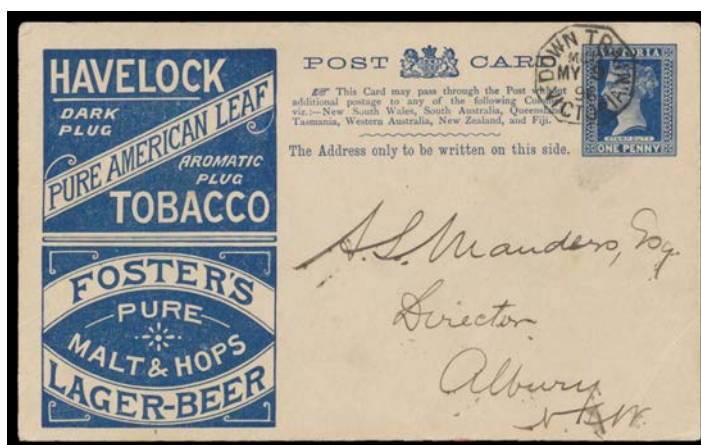
Lot Type Grading Description

Est \$A



Lot 398

- 398** PS A A1 - Type 2 (22½mm CDS with Stops at Sides) very fine b/s of MY7/85 on NSW 1d Envelope uprated with 1d & 2d all tied by light strikes of what appears to be a mailbag seal overwritten with manuscript "X" cancels, from Sydney - firm's cachet on the flap - to Melbourne (b/s). A very appealing usage. Rated RR: the ERD on cover.

200^T

Lot 399

- 399** PS A- A1 **DOWN TRAIN 12:** Type 2 (Duplex) very fine cancel of MY9/96 on 1d Postal Card with *Havelock/Foster's* advertising, to Albury (NSW) with message headed "Euroa". Rated RRR: the latest of 11 covers recorded. Another very appealing usage. Illustrated at page 69. [TPO 12 services were discontinued in 1898]

200^T

Lot 400

- 400** PS B A1 **UP TRAIN 13:** Type 3 ('TPO 13/VICTORIA') very fine cancel of 18DE11 on 1d pink Envelope with 'Shire of Seymour' header, to Malvern, minor opening faults. Rated RRRR: only 7 covers recorded.

250^T

- 401 C A- A2 - Type 3 ('TPO 13/VICTORIA') largely very fine cancel of 27AP22 tying KGV 2d scarlet to cover to Melbourne. Rated RRRR: the latest of 7 covers recorded. [In his exhibit, *Les Molnar* states that from 1919 the only remaining TPO service on this line was the Up service between Wodonga & Seymour. However, in the book *Down* usage is recorded to 1922]

200^T

- 402 C A A1- - Type 3 ('TPO 13/VIC') light but largely very fine cancel of 19SE25 on KGV 3d on cover to the USA. Rated RRRR: the earliest of the six covers recorded. Used on Up services only so there was no need for an 'UP/DOWN' wheel. [With the original letter headed "Medeira Vineyards/Chiltern"]

200^T

TPOs: MELBOURNE-WODONGA 1873-1932 (continued)

Lot Type Grading Description

Est \$A



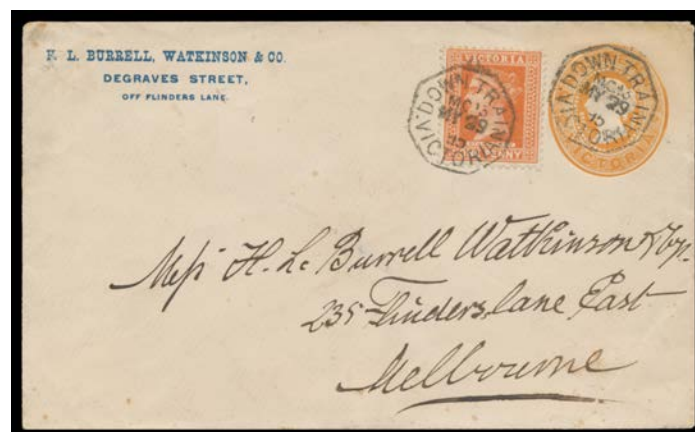
Lot 403

- 403 C A- A1 - Type 3 ("TPO 13/VIC") multiple fine to superb cancels of 21AP31 tying KGV 2d, 3d Airmail + Kingsford Smith 3d x4 & 6d to commercial cover endorsed "Experimental Airmail Flight/Australia to England", to London with superb strike of the flight cachet in violet on the reverse. The only recorded Victorian TPO cover noted as having also been carried on an airmail service. [The Australian airmail references are silent as to the rate/s for this flight. However, the philatelic evidence is that the rate was 1/11d - as here - per half-ounce]

400^T

Lot 404

- 404 C A A1- - Type 3 ("TPO 13/VIC") bold cancel of 13FE32 tying KGV 2d to cover to "HE [= Higher Education] School/Donald". Rated RRRR. A very significant item, being **the latest recorded TPO cover from Victoria**. Illustrated at page 74. *Ex George Bowman*: acquired at the *Prestige* auction of 4.3.2006 for \$276. [By late-1932, this last remaining TPO service had been discontinued]

400^T

Lot 405

- 405 PS A- A1 **DOWN TRAIN 13**: Type 1 (22mm Octagon) two very fine cancels of MY29/95 on uprated 1d orange Stamped To Order Envelope with *Burrell Watkinson & Co (Melbourne)* imprint in blue at U/L. Rated RRRR: the latest of only five covers recorded. *Ex Max Watson*.

300

- 406 C A- A2 - Type 2 (23½mm Octagon) very fine cancel of JA25/09 on 1d pink on PPC to Adelaide. Rated RRRR: the latest of only six covers recorded.

200^T