

Lot Type Grading Description

Est \$A

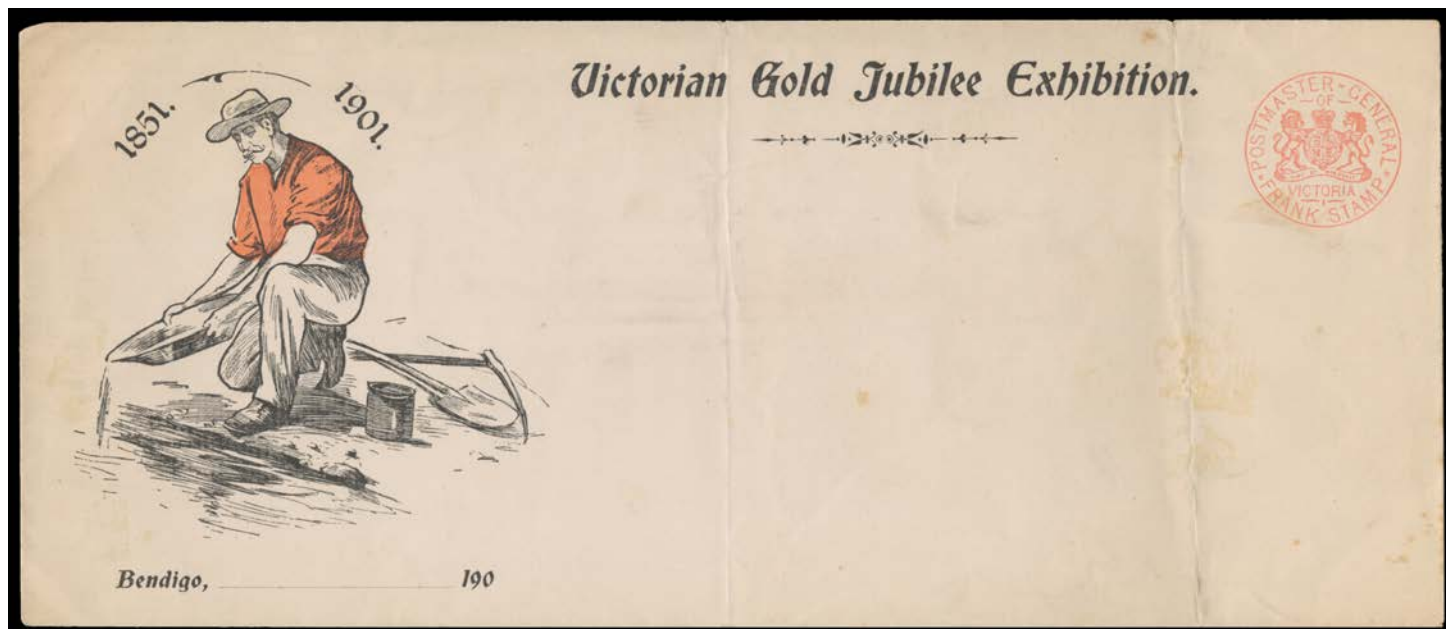
OFFICIAL MAIL - FRANK STAMPS

We are pleased to present the most extensive collection ever formed of this interesting material. Max Watson is the first collector ever to assemble examples of every frank stamp recorded on cover. His collection incorporates Carl Stieg's extensive reference holdings & collection, key items from Hans Karman's and Guy Linfield's collections, plus several important recent discoveries. The collection is offered alphabetically by "department" (an expression that is used rather loosely as it includes many officials as distinct from departments or ministries). Unless stated otherwise, impressions are printed, in black. Die patterns & rarity ratings are from the definitive study "Franked! The Official Mail of Victoria 1864-1902" by Carl Stieg & Max Watson (2008). The book includes a census of all items recorded until that time: items offered here are shown as "S&W #---". Note that items from the 1860s are rare, and from the 1870s are scarce: this collection includes more than twice as many as were in the Karman and Linfield collections combined. It should be noted that handstruck franks are often incomplete or badly worn: the quality of such strikes here is generally above-average, with many being quite exceptional. Probably 95% of all franked items are envelopes: this collection includes many postcards, plus very elusive wrappers, parcel tags, address labels & even a lettercard.

**Ex Lot 208****208** CPS

CHIEF SECRETARY: Exhibition envelopes etc with various dies **1)** with 'INTERCOLONIAL EXHIBITION 1866' imprint at top (S&W #E1190; the only recorded example), a little soiled; **2)** with 'OFFICES OF THE/Commissioners of the Melbourne International Exhibition 1880/...' imprint with all printing inverted relative to the knife of the envelope (#580), unused & very rare thus; **3)** with 'Centennial International Exhibition, Melbourne, 1888' imprint at L/L (#360), part-strikes of the 'EXHIBITION' duplex & cds on the reverse; **4)** ditto, long envelope (#E400), light vertical fold; **5)** 1897 with 'THE EXHIBITION TRUSTEES/...' imprint at L/L (Ex Carl Stieg but not in the census: Hans Karman's example sold for \$414); **6)** 1893 wrapper with 'OFFICES OF/THE EXHIBITION TRUSTEES/...' imprint at L/L (#W110; the only recorded example), to New Zealand, faults but presentable; and **7)** 1880 parcel label with 'MELBOURNE INTERNATIONAL EXHIBITION, 1880' imprint at top (unrecorded in the census), to Germany with very fine 'MC/97' & part-'EXHIBITION/NO29/80/VICTORIA' cds, soiled & repaired along central fold. A rare & desirable group. **(7)**

1,250

**Lot 260****260** PS

B

POSTMASTER-GENERAL: Die 3 printed in red on 1901 long envelope with 'Victorian Gold Jubilee Exhibition' header & illustration of a miner panning for gold at left, two vertical folds, unused & very rare thus. [John Lancaster's used example - soiled, with repaired peripheral tears - sold at our auction of 18.10.2016 for \$1612]

850

OFFICIAL MAIL - FRANK STAMPS (continued)

Lot	Type	Grading	Description	Est \$A
-----	------	---------	-------------	---------

**Lot 261****261**

C

A+

- Die 5 light h/s in violet on 1893 postcard with 'INTERCOLONIAL/Wine, fruit, Grain & General Products/EXHIBITION 1893' imprint at the top. Superb! [Only three other examples have been recorded. *John Lancaster's* very fine example sold at our auction of 18.10.2016 for \$347]

300