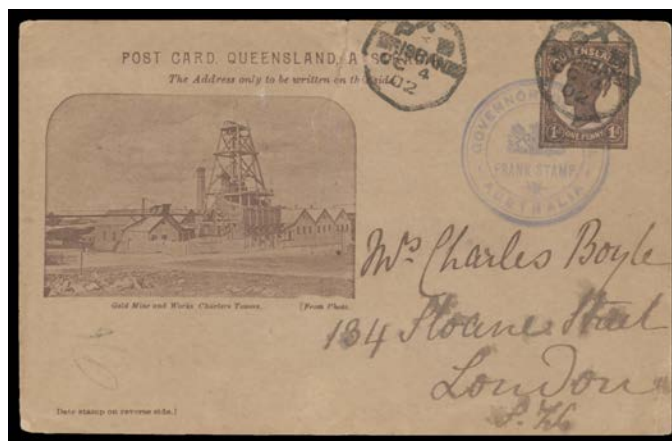


Lot Type Grading Description

Est \$A

OFFICIAL MAIL - FRANK STAMPS

We are pleased to present the most extensive collection ever formed of this interesting material. Max Watson is the first collector ever to assemble examples of every frank stamp recorded on cover. His collection incorporates Carl Stieg's extensive reference holdings & collection, key items from Hans Karman's and Guy Linfield's collections, plus several important recent discoveries. The collection is offered alphabetically by "department" (an expression that is used rather loosely as it includes many officials as distinct from departments or ministries). Unless stated otherwise, impressions are printed, in black. Die patterns & rarity ratings are from the definitive study "Franked! The Official Mail of Victoria 1864-1902" by Carl Stieg & Max Watson (2008). The book includes a census of all items recorded until that time: items offered here are shown as "S&W #---". Note that items from the 1860s are rare, and from the 1870s are scarce: this collection includes more than twice as many as were in the Karman and Linfield collections combined. It should be noted that handstruck franks are often incomplete or badly worn: the quality of such strikes here is generally above-average, with many being quite exceptional. Probably 95% of all franked items are envelopes: this collection includes many postcards, plus very elusive wrappers, parcel tags, address labels & even a lettercard.



Lot 242

242 PS C

GOVERNOR-GENERAL: 1902 usage of Queensland 1d Postal Card ("Gold Mine and Works Charters Towers") with unnecessary usage of the frank h/s in blue (S&W #P20) to London with Brisbane d/s of OC4/02 & message on the reverse headed "Government House", rather aged & with a repaired tear at the top. The only such item recorded but we have seen another similar card (in worse condition).

400

TPOs: MELBOURNE-SANDHURST/BENDIGO 1865-1927

Lot 361

361 PS A A1+

DOWN TRAIN 3: Type 4 ('TPO 3/VICTORIA' with No Arcs) superb *per favor* strike of 10JA13 on KGV Fullface 1d Letter Card ("MT LOFTY RANGES/SOUTH AUSTRALIA" - horse & cart - in claret), unsealed. Gorgeous, if philatelic. [Illustrated at page 11: the pencil address didn't belong & has been removed]

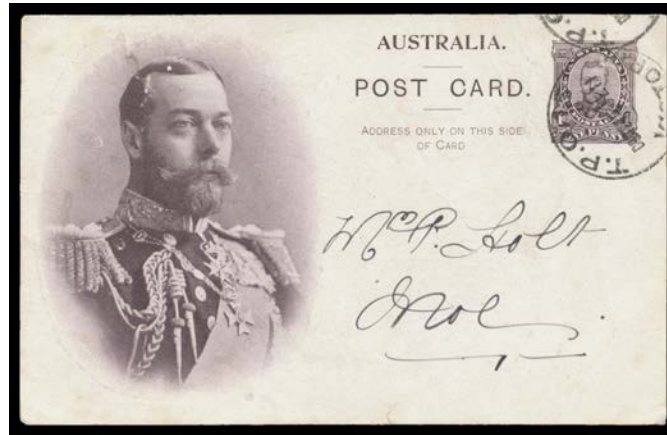
200^T

Lot	Type	Grading	Description	Est \$A
-----	------	---------	-------------	---------

TPOs: SEYMOUR-NUMURKAH

A branch line from Seymour - on the main line to Wodonga & on from there via Albury to Sydney - to Shepparton opened in January 1880 but it was only in 1888, by which time the line had been extended to Numurkah, that TPO services commenced.

408	PS	B A1+	UP TRAIN 17: Type 2 ('TPO 17') superb cancel of 17AP12 on Fullface 1d Postal Card ("PHANTOM FALLS/ VICTORIA") with message headed "Rushworth", to Coburg, minor stain on the address side. Rated RR on cover.	100 ^T
-----	----	-------	--	------------------

TPOs: MELBOURNE-SALE 1878-1921**Lot 418**

418	PS	A- A2	DOWN TRAIN 15: Type 2 ('TPO 15') largely superb large-part cancel of 15JE11 on 1d Coronation Postal Card with message headed "Warragul", to Moe. Rated RRRRR: the earlier of only 2 usages on cover recorded. Illustrated at page 79.	250 ^T
------------	----	-------	--	------------------