

Lot Type Grading Description

Est \$A

**WESTERN AUSTRALIA - Postal Stationery****Lot 951**

**951** PS B **POSTAL CARDS:** 1917 Re-issue of Severed Reply Cards 1d(+1d) outward-half with 'THE ANNEXED CARD IS INTENDED/ONLY FOR THE REPLY' Barred-Out BW #P45, the card guillotined through the obliterated text, minor blemishes on the reverse, unused, Cat \$8000. [John Sinfield's very fine example with the complete bars sold at our auction of 8/11/2013 for \$8625]

500

**Ex Lot 952**

**952** PS A/A- **LETTER CARDS:** Unused group with 1d Swan, 2d brown (scarcer than the 1d Swan), 2d blue with Text on Back x2 shades, 2d blue with No Text on Back, 'ONE PENNY' on 2d blue x2 shades, generally very fine. (7)

650<sup>T</sup>**Lot 953**

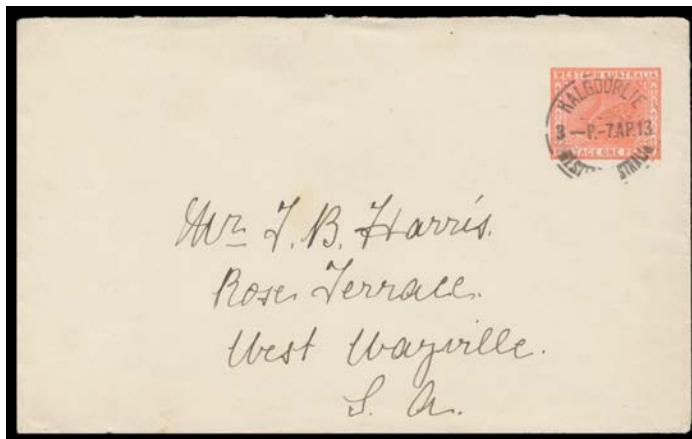
**953** PS A - 1d red with heading 'FOR USE WITHIN WESTERN AUSTRALIA' LC1, unused. [In WA in 1902, 1d paid the town letter rate only, 2d being the rate both intrastate and interstate, and also to New Zealand & Fiji. The 1d Letter Card is recorded from July 1902 & was withdrawn about October 1902. Only 2400 were delivered to Perth]

400

**WESTERN AUSTRALIA - Postal Stationery (continued)**

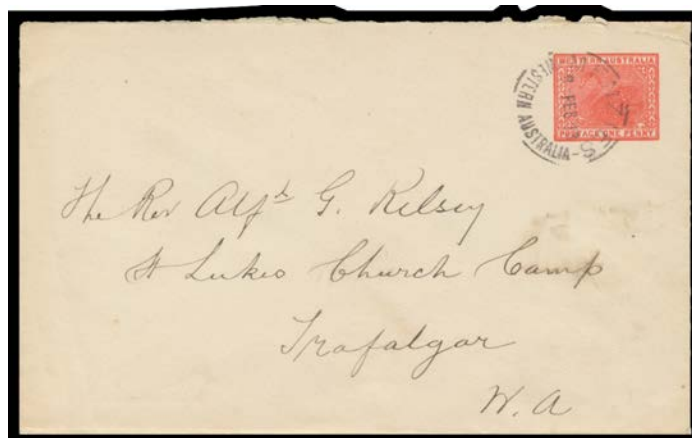
Lot Type Grading Description

Est \$A

**Lot 954**

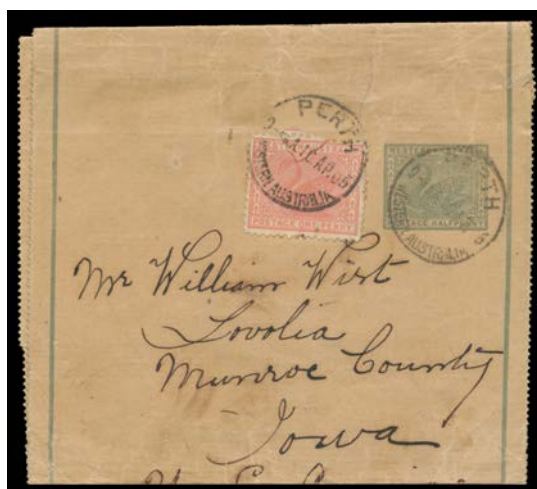
**954** PS A **ENVELOPES:** 1909 Large Die (23½x19½mm) 1d rose-pink (eosin) EN6var, to South Australia with Kalgoorlie cds of 7AP13. Ex Trevor Hiscock. RPSofV Certificate (2016).

400

**Lot 955**

**955** PS A- - 1912 Intermediate Die (22½x18½mm) 1d deep carmine on rough unsurfaced laid stock EN7, to "St Luke's Church Camp/Trafalgar WA" with 'MENZIES/8FEB13/WESTERN AUSTRALIA' cds, minor blemishes. Rare & underrated. [Brian Pope lists the 1912 printing but doesn't note that it is in a distinct shade, or that the die is of an intermediate size. These factors are important for identifying these rare envelopes, of which no unused example, and only a few used examples have been recorded. Superior to Trevor Hiscock's example - ironed-out vertical fold - that sold at the Prestige auction of 22.2.2013 for \$977]

600

**Lot 956**

**956** PS B **WRAPPERS:** 1903 Borders (98mm between the lines) ½d Pope #WR3 uprated to Iowa with 1d tied by Perth cds of 10AP05, minor blemishes. [The foreign rate was 1d for the first 4oz + ½d for each additional 2oz]

400<sup>T</sup>

**WESTERN AUSTRALIA - Postal Stationery (continued)**

Lot Type Grading Description

Est \$A

**Lot 957**

**957** PS A- - 1905 Borders (106mm between the lines) ½d Pope #WR3.1 uprated to Scotland with ½d tied by 'CLAREMONT/JA13/06/WA' cds of 10AP05. [The rate to the UK was 1d for the first 8oz]

400<sup>T</sup>