

Lot

Type

Grading

Description

Est \$A

COMMONWEALTH OF AUSTRALIA - Aerophilately & Flight Covers

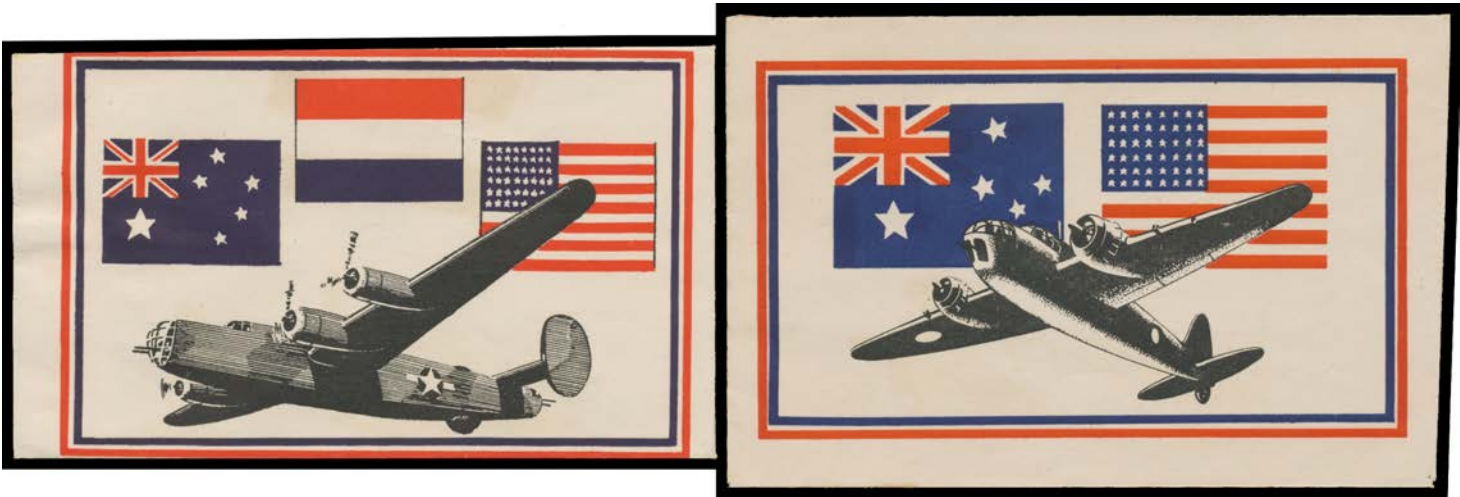


Ex Lot 310

310	C	A/B	1914 (July) souvenir postcard AAMC #3 x2 carried Melbourne-Sydney by Maurice Guillaux each with 1d Kangaroo tied 'AUSTRALIAN/AERIAL MAIL/MELBOURNE/16-JUL-1914/VIC' oval d/s in violet and 'SYDNEY/18JL14/64' arrival datestamp alongside, also two WWI AIF covers including one from Sudan to Brigadier-General NM Smyth in France and three 1930s inwards airmail covers from Burma, France with perfins, & Indo-China via Bangkok, condition a little mixed but overall fine. (7)	400
-----	---	-----	--	-----

WORLD WAR II PRISONERS OF WAR - General & Miscellaneous

We are pleased to offer the collection formed by Neil Russell from England. This is one of the finest and most extensive such collections we have seen. The most useful reference is "Means of Communication...[of] Internees & POWs Held in Australia during WWII" by Sybrand Bakker (1998), to which Neil Russell was a significant contributor. In this section of the sale, there are numerous references to "notelopes", which are more properly termed unstamped (formular) or stamped (1/-) aerogrammes. These, and various types of Postal Cards, were supplied by the military authorities, not the Post Office, and are therefore not accepted by the FIP as "postal stationery". However, the FIP does accept such non-postal items as money orders, postal notes, IRCs and telegram forms, all of which makes a mockery of the exclusion of POW items etc that were 100% postal. These issues are analagous to stationery issued by private mailing services rather than the Post Office in many European countries. Those issues are accepted without question under the FIP definition of "Postal Stationery". It is wholly illogical and capricious to exclude the Australian POW Postal Stationery from the definition.



Ex Lot 502

502	L	A-/B	PROPAGANDA LEAFLETS: All-different selection of Allied issues comprising generic issues x3 (two illustrated); in Indonesion dropped over Timor x2 (one with photo of Timorese soldiers); in Malay; in Urdu aimed at Indians fighting with the Japanese; in Japanese dropped over Japanese positions in Burma x4 (one illustrated); and Australian group dropped over New Guinea, in Japanese (with map in blue on the reverse) & in Pidgin x2; also two leaflet envelopes with 1) Australian & American Flags plus Beaufort bomber & Boomerang fighter; and 2) Australian Dutch & American Flags plus Liberator bomber & Lightning fighter; plus Japanese "Ticket to Armistice" leaflet dropped over Allied Forces; generally fine to very fine. Another very scarce & desirable group. (17 items)	500 ^T
503	L	A/B	- All-different selection of Allied bilingual issues advising of the Japanese Surrender comprising dropped over Sham Shui Po Camp in Hong Kong in English/Japanese; dropped over Malaya in English/Japanese; dropped over Sarawak/North Borneo in Malay/English/Japanese; instructing camp guards to advise POWs of the surrender & "Guards should then withdraw to their own quarters" in Japanese/English/Malay x2; & "The bearer has ceased resistance..." in Japanese/English; remarkably fine for such ephemeral items. (6)	250 ^T

Lot

Type

Grading

Description

Est \$A

AUSTRALIAN POWs IN BURMA



Ex Lot 591

591

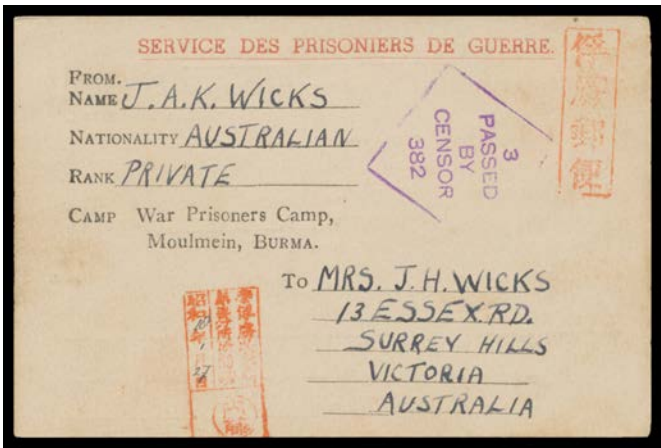
PS

B

MOULMEIN: 1943 black/white POW Envelope to "Moulemein [sic] Burma" from NSW with camp censor *Adachi* cachet; and *Red Cross* blue/white lettersheet to "Moulmein [sic] Burma" from South Australia; both censored at Melbourne, minor blemishes.

The camp designation "Moulmein" is misleading. Moulmein is 65km north of Thanbyuzayat which was the northern terminus of the infamous Burma-Siam Railway. The 4800 Australians in Burma were all sent from Singapore or Java to work on the railway construction. The Burma section was completed in October 1943, after which the POWs were moved into Thailand. (2)

750^T



Ex Lot 592

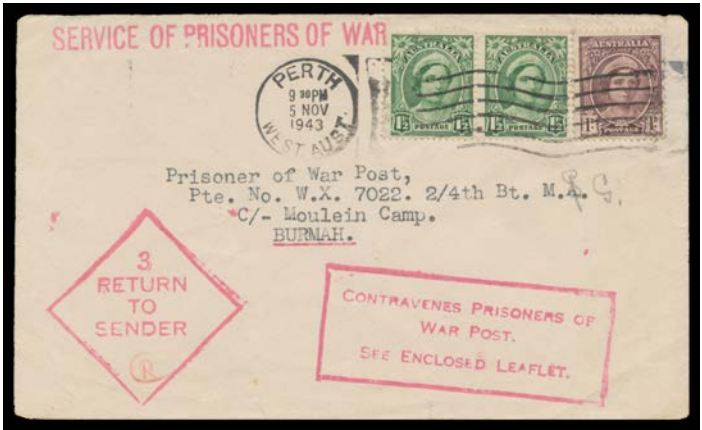
592

PS

A-/B

- POW Postal Cards printed in red & black with 'Camp War Prisoners Camp/Moulmein, BURMA' imprint being an address advice card also stating "I am with friends...", unused & another undated to Victoria with camp censor *Naito* chop & message "I am working for pay at 10 cents per day", minor blemishes. (2)

400^T



Lot 593

593

C

A

- 1943 (Nov 5) airmail cover from Perth to "Moulein Camp/Burmah" [sic] with superb boxed 'CONTRAVENES PRISONERS OF/WAR POST/SEE ENCLOSED LEAFLET' - which is not included - & diamond '3 /RETURN/TO SENDER' cachets both in rosine applied at Melbourne. Gorgeous! [Probably rejected because the soldier's name was omitted]

500^T

AUSTRALIAN POWs IN BURMA (continued)

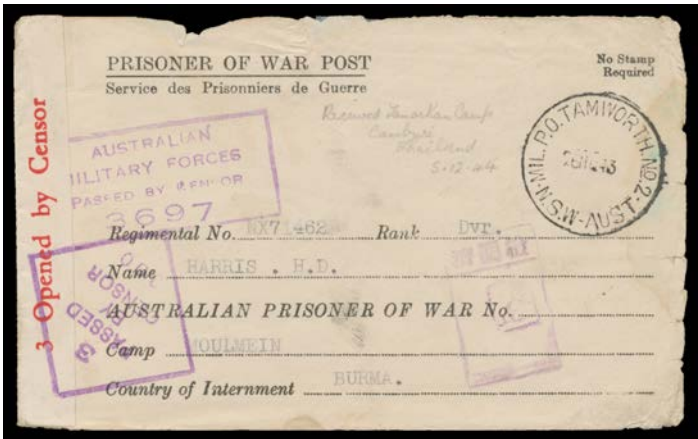
Lot

Type

Grading

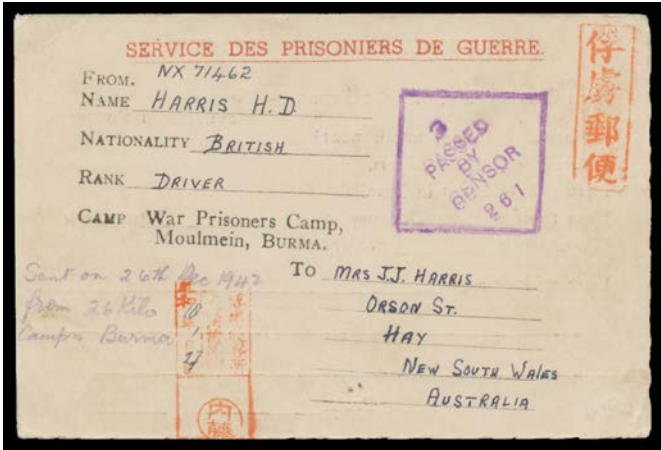
Description

Est \$A



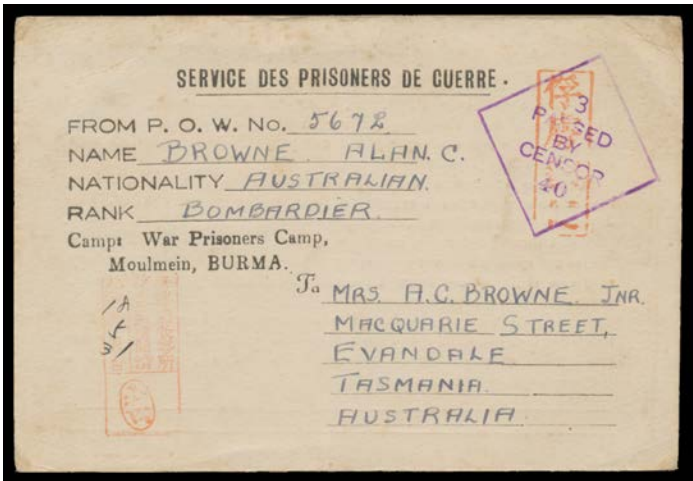
Lot 594

- 594
- PS
- C
- 1943 black/white POW Envelope to "Moulmein Burma" from NSW with 'MIL PO TAMWORTH No 2' cds & camp censor *Adachi* cachet, forwarded to Thailand with addressee's endorsement "Received Tamarkan Camp/Canburi/Thailand/5.12.44", a transit period of "only" 13 months, a few defects but quite presentable.
- 250^T



Lot 595

- 595
- PS
- B
- POW Postal Card printed in red & black with 'Camp War Prisoners Camp/Moulmein, BURMA' imprint being an address advice card also stating "I am with friends..." with *Black Text on Face at an Angle*, to NSW with camp censor *Naito* chop, again with message "I am working for pay at 10 cents per day", minor blemishes.
- 250^T



Lot 596

- 596
- PS
- B
- POW Postal Card printed wholly in black with with 'Camp War Prisoners Camp/Moulmein, BURMA' imprint & printed chatty "letter" that makes life sound wonderful & the Japanese commander an enlightened philanthropist, to Tasmania with camp censor *Yamada* chop, minor blemishes. Outstanding propaganda item with jolly references to food, medical care, tobacco, concerts & movies!
- 350^T

Lot Type Grading Description

Est \$A

AUSTRALIAN POWs IN THAILAND

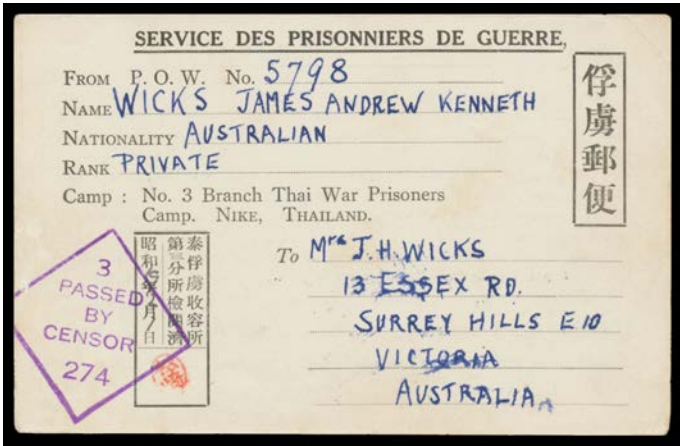


Ex Lot 597

597 C A-/B

Series of small second-generation photographs of the infamous Burma-Thailand Railway with railway cuttings & bridges (including after being bombed by the RAF), camp scenes including hospital ward & POW theatre, POW funeral & the cemetery at Kanburi, "Golden Arrow Express" (carloads of coolies), etc, ink notations on the reverse. Exceptional background material. (23)

200^T



Lot 606

606 PS A-

CAMP No 3: Undated Postal Card with 'No 3 Branch Thai War Prisoners/Camp. NIKE THAILAND' & lengthy *pro forma* message including "With best wishes for a cheerful Christmas" & added message "Thailand heaven after Burma" which suggests camp censor *Matsuzaki* couldn't read English!, to Victoria with Melbourne censor cachet in violet, minor blemishes.

250^T

Lot

Type

Grading

Description

Est \$A

BURMA

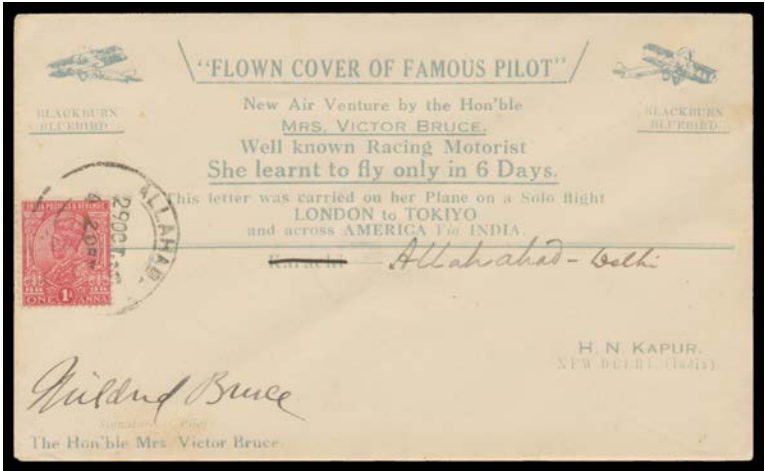


Lot 1040

1040	**	B	JAPANESE OCCUPATION: 1942 Handstamped with Peacock Device at Myaungmya on KGVI 1r purple & blue SG J18 block of 4, minor aging, unmounted, Cat £1800+.	550 ^T
1041	P	A	- 1942 Farmer & Buffalo imperforate plate proof block of 6 in bright scarlet on ungummed laid <i>batonné</i> paper.	150

INDIA

Apart from the airmail covers, the lots in this section are from the correspondence of a British engineer who went to India in the 1870s to work on the Railways. This material has never before been on the market & thus offers the prospect for real discovery. See also Lots 1077, 1100, 1408 & 1411, all from the same source.



Ex Lot 1120

1120	C	A/A-	1930s Airmail Covers selection noted 1927 'ROYAL AIR FORCE DISPLAY 1927/LAHORE' pictorial cds on KGV 1a brown, 1930 'Around the World' commemorative covers signed "Mildred Bruce" x6 carried on different legs within India, 1932 Wolfgang von Granau cover franked with Canada, Ceylon, India Japan, Netherlands Indies, Phillipines & USA stamps (a few faults), 1933 Rangoon-Sharjah with 'FIRST AIR MAIL' cancel & BAHRAIN' b/s, 1935 with 'QUETTA EARTH QUAKE POSTAGE FREE' cachet, also 1943 QANTAS Catalina 'Vega Star' flown Karachi-Perth with combination franking pilot-signed, a few with minor blemishes but condition generally fine. (15)	1,000
------	---	------	--	-------