

Lot	Type	Grading	Description	Est \$A
-----	------	---------	-------------	---------

COMMONWEALTH OF AUSTRALIA - Aerophilately & Flight Covers

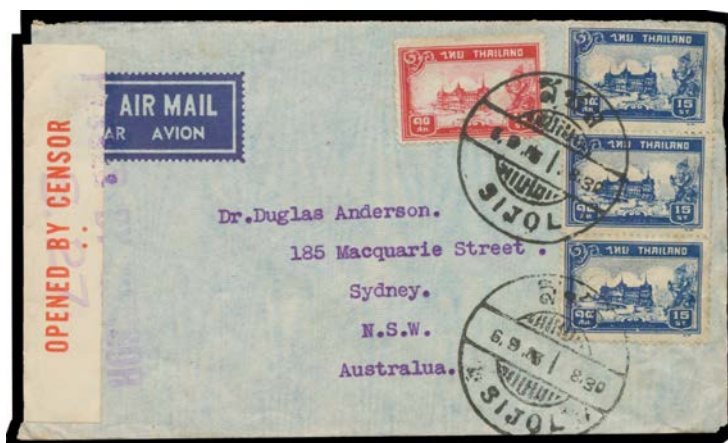
334	C	A	1937 (Apr 20) Australia-Hong Kong-Philippines per <i>Pan Am</i> FAM-14 at 1/4d rate from Adelaide with KGV 1/4d, and postcard at 8d rate from Brisbane, both with the flight cachet in violet. Very scarce duo. (2)	200 ^T
-----	---	---	---	------------------



Ex Lot 338

338	CPS	A/A-	1945-54 Flights accumulation noted 1945 first civilian service to Singapore by Flying Boat 'Coriolanus' (AAMC #1009) and Ceylon-Sydney by Liberator (#1017), 1946 KGV1 7d 'AIRLETTER' overprinted '.../RE-OPENING/AUSTRALIA-ENGLAND/EMPIRE AIR ROUTE/...' in violet to Singapore (#1036a), Great Britain KGV1 6d aerogramme for <i>Kangaroo Route</i> opening (#1039b), 1947 Norfolk Island-Sydney and Japan pair including 'BCOF' overprint, 1949 Hong Kong pair one with combination franking, 1952 South Africa & 1954 North America flights including intermediates, many with QANTAS labels & pilot-signed, also 1951 Lae-Tarawa-Lae (#P198), 1952 BOAC Comet flights with intermediates & 1953 TEAL Tonga flights, some duplication and a couple with minor blemishes but overall fine condition, Cat \$4000+. (90+)	600
-----	-----	------	--	-----

COMMONWEALTH OF AUSTRALIA - Postal History



Ex Lot 361

361	C	A/B	1900s-70s covers accumulation noted Kangaroos 2d Second Wmk 'OS' punctures x3 on <i>House of Representatives</i> long cover, a few Colonial items including NSW 1d Arms 'OS' on <i>Royal Commission on the Fruit Industry</i> cover, group of inwards mail to Australia noted Russia 1917 registered with Japanese 'OFFICIALLY SEALED' labels tied 'Damage Repaired' cachets, Great Britain 1937 KGV 1/2d envelope with 'CUSTOMS DUTY 1/2D/TO PAY' cachet in red, Hong Kong 1940 from 'RN Hospital' with oval 'PASSED BY CENSOR/218' cachet in blue, Thailand censored airmail with 'SIJOL' cds, WWII Forces in Egypt airmails & a few picture postcards, also quantity of 1940s-70s FDCs with official & private cachets including <i>Sigma</i> and other drug companies, mixed condition. (100s)	400
-----	---	-----	--	-----

386	C	B/A-	1937 Melbourne-California & Sydney-Ohio commercial airmail covers both via Hong Kong & Philippines per <i>Pan Am</i> FAM-14 at 4/8d rate with KGV 4d olive x2 & 2/- Roo x2, horizontal fold; or at double-rate of 9/3d with Roos 2/- x2 & 5/- + KGV1 3d blue, part of reverse missing. Scarce pair. (2)	350 ^T
-----	---	------	---	------------------

COMMONWEALTH OF AUSTRALIA - Airmail Covers - World War II**Lot 405**

- 405** C B **1940** (Aug 26) Brisbane-Hong Kong-Philippines-USA-UK at 6/5d all up air rate with 5d Ram & 2/- Roo x3, red/white censor label with one large dot & boxed 'PASSED BY/CENSOR 3' h/s in violet, London b/s of 21SEP/1940 & redirected internally. Rare. [Endorsed to go via Canada but that was an error]

400^T**Ex Lot 407**

- 407** C/CL B **1940-41** covers sent via Hong Kong & Philippines per *Pan Am* FAM-14 **1)** 8.1.1940 NSW-California at 4/8d rate; **2)** 23.5.1940 Perth-Canada at 4/7d rate with red/white censor label & No 3 cachet plus Hong Kong No 9 censor cachet in green, two vertical folds; and **3)** 7.5.1941 Adelaide-London at 4/7d, Very scarce trio. [Breckon doesn't mention rates via Hong Kong. Walker states the 4/7d rate applied from 25.6.1940 but two of these covers are 1 to 4 months earlier. The rates were 4/8d to America; 4/7d to Canada; and 4/7d on-forwarded by sea to Britain] **(3)**

600^T**COMMONWEALTH OF AUSTRALIA - WORLD WAR II - CIVIL CENSORSHIP**

We are pleased to offer the collection formed by Neil Russell from England. This is one of the finest and most extensive such collections we have seen. References are to "British Empire Civil Censorship Devices" by John Little (2008), to which Neil Russell was a significant contributor.

**Lot 457**

- 457** C A- **NORTHERN TERRITORY - ALICE SPRINGS:** 1941 (Apr 21) airmail cover to Montana at 4/8d rate via Hong Kong + 3d registration (overpaid 1d) with manuscript "HMAS Melville" on provisional registration label but the stamps cancelled with small 'DARWIN NT/AUSTRALIA' cds, red/white 'OPENED BY CENSOR' label tied by '7 / PASSED BY/CENSOR/ 1' cachet in violet, two strikes of the 'Collector of Customs' cachet, boxed 'NOT OPENED BY/CENSOR' cachet applied at Hong Kong, transit b/s of Honolulu, San Francisco & Great Falls (Mon) plus arrival b/s of 'GOLDBUTTE/MAY/23/1941/MOB'. A remarkable naval cover combining elements of registration/customs/mining/money orders etc.

400^T

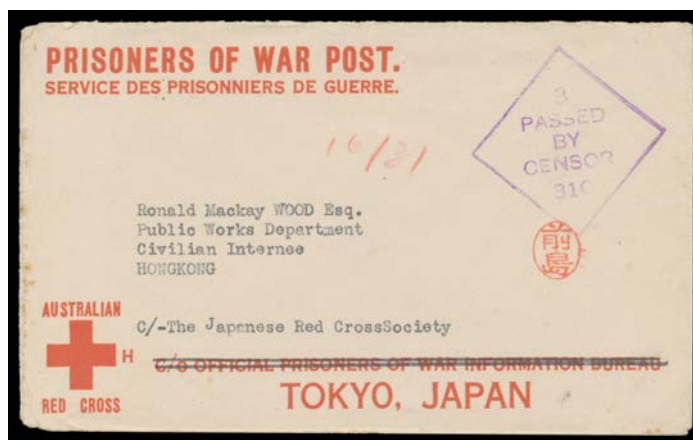
Lot Type Grading Description

Est \$A

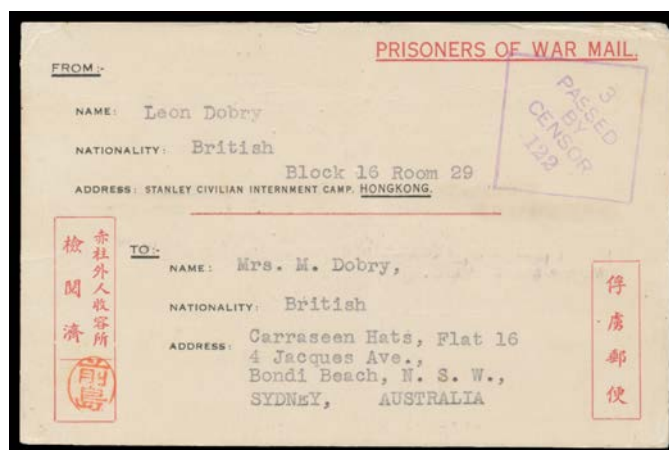
COMMONWEALTH OF AUSTRALIA - Military - World War II**Ex Lot 480**

480 C A/B **REFUGEE & EVACUEE MAIL:** 1942 POW Envelope from a POW in Hong Kong to his wife "Hong Kong Evacuee/Hong Kong Liaison Officer/Sydney"; 1943 from Brazil endorsed ".../Toronto/Canada" on the flap to "Hong Kong Liaison Officer/For Hong Kong Evacuees/Sydney", non-contemporary note "Gripsholm" on the reverse; and surface & airmail covers to London to *Friends Committee for Refugees & Aliens* or the *Jewish Refugees Committee*: see also Lots **281447 & 281448**.

The "Gripsholm" was a Swedish ship that made two exchanges of mail between Japanese-held territory & Allied territories by way of Portuguese India or Mozambique. *FW Webb* at page 199 states there were only two mail despatches from Hong Kong during the war, in 1942 & 1943, both via Mozambique. These were per Japanese ship "Asama Maru": see the next two lots. (4)

750^T**AUSTRALIAN POWs IN HONG KONG****Ex Lot 608**

608 PS B **Red Cross Envelopes with Two Ruled Lines or Thick Bar x2** all to civilian internees from Victoria or NSW x2, Japanese censor "chops" of *Maejima*, *Takamatsu* or *Matsuda* (relief censor), minor blemishes. (3)

400^T**Ex Lot 609**

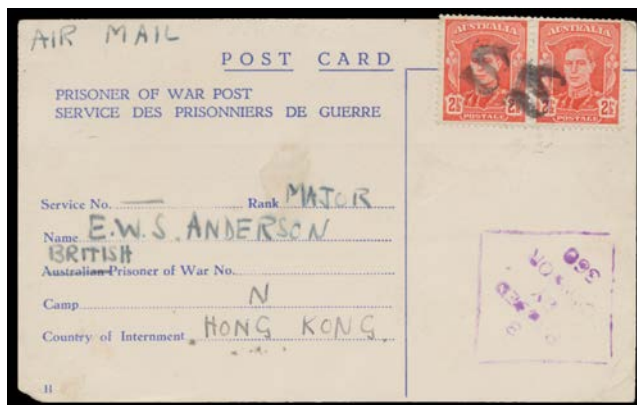
609 PS A-/B **POW Postal Card & Envelope with 'STANLEY CIVILIAN INTERNMENT CAMP'** imprint & a different type of Envelope endorsed on the flap "Prisoner of War Camp N", Japanese censor chops of *Maejima*, *Funyou* or *Hasegawa*, the two envelopes peculiarly with red lines - there were no registration facilities for POWs - & both treated on arrival as registered mail with Sydney cds of 1DE43 or 2DE43. [There were only two mail despatches from Hong Kong during the war, in 1942 & 1943, both via Mozambique: see also Lot **281428**] (3)

1,000^T

AUSTRALIAN POWs IN HONG KONG (continued)

Lot Type Grading Description

Est \$A

**Ex Lot 610**

- 610** CPS A/B Red Cross Envelope with Thick Bar, and a plain cover with Japanese censor "chops" of Matsuda (relief censor) or Hasegawa, also 1945 (Aug 4) blue/white Postal Card uprated for air transmission with 2½d x2 that arrived after the addressee was repatriated & forwarded to Manila & then to Sydney (the redirection labels removed but included), all to POW Camp "N" for officers, minor blemishes. (3)

400^T**Lot 611**

- 611** PS B Red Cross Envelope with Three Thin Bars to an interned medical doctor at Queen Mary Hospital but forwarded to "Macao" with hexagonal '.../24-III-44/MACAU' arrival b/s, minor blemishes. Macau, as a Portuguese colony, was neutral territory. Had the good doctor been paroled and "deported"?

300^T**Lot 612**

- 612** C B 1942 plain envelope endorsed "Block 18/Room 16/Stanley Internment Camp" on the reverse, to NSW with Japanese 20s tied by Japanese Hong Kong cds of 17.6.27 (1942), 'BONDI/30OC42/NSW-AUST' arrival cds, 'UNCLAIMED' & 'REBUTS' (= return) cachets in violet or rosine, four separate censor labels - two brown & two white - one believed to be American & the last applied at Sydney, minor blemishes. Ex Patrick Pearson. [FW Webb at page 199 states that only three such plain covers have been recorded, two to GB & one, presumably this item, to Australia]

750^T

Lot Type Grading Description

Est \$A

LIBERATED POWs RECEPTION CENTRES



Ex Lot 627

627 CPS

Balance of this section including original notice warning against speaking about "Escape Organisations", plain cover with superb 'REPATRIATED/PRISONER OF WAR/SERVICE' cachet in violet, Japanese uprated 2s Postal Card to Borneo during "**Suspended Mail Period**", 1944 cover from WA to a POW in Germany with various cachets including 'RETURNED TO/AUSTRALIA', 1944 GB Forces Postal Card & Aerogramme both to Hong Kong but received after repatriation, 1945 GB cover to Australian POW Reception Group in Manila forwarded to Canada, seven telegrams from liberated POWs, etc, also post-War mail 1947 Indian Forces cover from Japanese POW Camp in Burma with 'AUSTRALIAN IF CONTROL' cachet in violet, 1949 Philippines stampless *Bureau of Prisons* cover with typed "POW Services" to NSW, and 1959 PRC cover to *POW Central Information Agency* in Geneva with superb 'AUSTRALIAN LIST' cachet, condition variable. Interesting lot. **(29 items)**

500^T



Lot 645

645 C

A

BRITISH ROYAL NAVAL BARRACKS, SYDNEY (NSW): 1945 (Nov 1) *American Red Cross* cover endorsed "RAPWI/Warwick Farm" (= Repatriation of Allied Prisoners of War & Internees) to New Zealand with 4d tied by cut-down relief 'C /NSW' cds & registration label with 'BR N BARRACKS' h/s. [This temporary camp housed repatriated POWs from Hong Kong]

250^T

Lot Type Grading Description Est \$A

MISCELLANEOUS LOTS

982	**/*O		Worldwide mint & used accumulation noted Canada with array of Small Queens, Germany with States, Great Britain with array of QV issues, Hong Kong with Treaty Port cancels, India including 1854 2a green imperf with bold '76' numeral-in-diamond cancel, New Zealand with values up to KGV 3/- Admiral also 'OFFICIAL' overprints, then Pacific Islands, South Africa & Provinces including Orange Free State overprints, Switzerland with Helvetias including imperfs, some locals & revenues, postmark interest, mixed condition but plenty of pickings. (100s)	400
1006	**/*C	A	Postal Administration presentation albums with stamps, M/Ss and some FDCs including China PRC 2008 Olympics three different books and 1999, 2000 & 2007 yearbooks, USA 1996 yearbooks x2, Great Britain Millennium Stamps book, Hong Kong 2000 annual stamp pack plus a few more and some loose items. (100s)	200

HONG KONG



Ex Lot 1109

1109	*/O		Mint & used accumulation with quantity of QV issues including 2c red 'JUBILEE' overprint and postmark potential noted 'Y1' on 24c green, also perfins and company chops plus a few mint, KEVII used to \$1 with bulk lower values, KGV definitives in quantity plus 'CHINA' overprints to \$2 (Script CA wmk, Cat £250 but short corner perfs), 1935 Silver Jubilee sets used x40, 1948 Silver Wedding \$5 mint (very light hinge mark) & fine used, KGV definitives to \$10 mint x2 (light toning), \$1 Centenary x10+ used and some QEII mostly used, plus a few postage dues & fiscals, condition mixed but generally fine. (100s)	800
------	-----	--	--	-----



Ex Lot 1110

1110	*	A B1	BRITISH POST OFFICES IN CHINA: 1917-21 KGV MCA Wmk 1c to \$10 SG 1-17, very fresh & lightly mounted, Cat £2000. [NB: there is no SG 10] (16)	1,500 ^T
------	---	------	---	--------------------

NEW GUINEA - German (Deutsch) New Guinea



Lot 1172

1172	PS	(B)	INWARDS MAIL: usage of Hong Kong '4 CENTS' on 3c Postal Card (reply half) to the ship's doctor aboard SMS "Möwe" c/- the German Consulate at Matupi with superb 'AMOY/ A /FE20/00' cds & Hong Kong transit cds, apparently missent to Sydney where endorsed in red "Matupi/New Britain", full message headed "Amoy ab SMS Irene 12 II 00", some soiling & repaired tear at right. Ex Murray Collins: sold for \$935 at the Macray Watson sale of 31/3/1998.	750
------	----	-----	--	-----