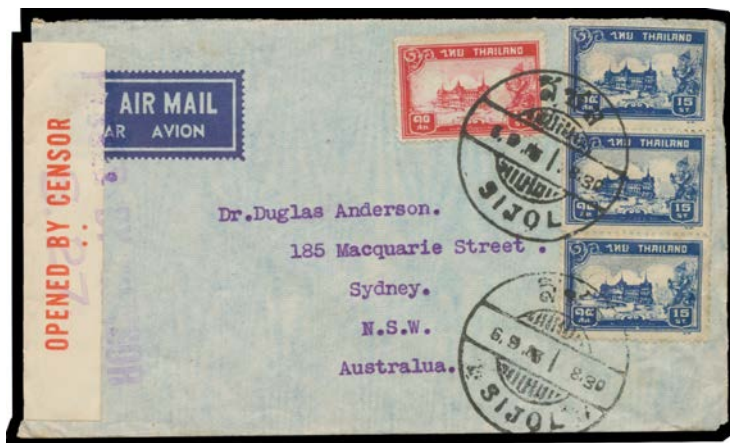


Lot Type Grading Description

Est \$A

**COMMONWEALTH OF AUSTRALIA - Postal History**

Ex Lot 361

361	C	A/B	<b>1900s-70s covers accumulation</b> noted Kangaroos 2d Second Wmk 'OS' punctures x3 on <i>House of Representatives</i> long cover, a few Colonial items including NSW 1d Arms 'OS' on <i>Royal Commission on the Fruit Industry</i> cover, group of inwards mail to Australia noted Russia 1917 registered with Japanese 'OFFICIALLY SEALED' labels tied 'Damage Repaired' cachets, Great Britain 1937 KGV ½d envelope with 'CUSTOMS DUTY/½D/TO PAY' cachet in red, Hong Kong 1940 from 'RN Hospital' with oval 'PASSED BY CENSOR/218' cachet in blue, Thailand censored airmail with 'SIJOL' cds, WWII Forces in Egypt airmails & a few picture postcards, also quantity of 1940s-70s FDCs with official & private cachets including <i>Sigma</i> and other drug companies, mixed condition. <b>(100s)</b>	400
-----	---	-----	--	-----

**TASMANIA - Postal History**

781	C	A/B	<b>1910-12 Tasmanian PPCs from Ringarooma all to Russia</b> , one with Pictorials ½d & 1d, the others with 1d only & various Russian tax & redirection handstamps. Nice lot, to a very scarce destination. <b>(5)</b>	300
-----	---	-----	---	-----

**MISCELLANEOUS LOTS**

970	*/OC	A/B	<b>Worldwide accumulation</b> on pages noted albums of Denmark, France, GB, NZ including 1890s adverts, Norway, Russia, USA and many more, <i>RPSV</i> 1960s exchange sheets, also loose stamps in envelopes & boxes mostly used but includes a batch of US mint, bundles of covers including FDCs and commercial mail plus literature mostly philatelic but also <i>Milton's</i> "Paradise Lost" large illustrated edition, condition mixed but many pickings. <b>(1000s)</b>	500
974	CPS		<b>Postal History group</b> 1890s-1900s group with Boer War covers from Transvaal & Orange Free State with unit names including "Black Watch, S African Field Force" plus one to "Dyatalawa Camp, Ceylon" with 'maldirige' [= missent] cachet, Cape of Good Hope 1897 to England with 'SPYTFONTEIN' d/s ( <i>Putzel</i> : extremely rare), Denmark 1892 4ore envelope uprated with 4ore x4, Gold Coast KEVII 1d used as a revenue on unused cheque, Japan flimsy wrapper with 5r single, Romania 1905 5b postal card with Italian postage due, Russia 1892 Arms 14k envelope registered to Germany with 2k 4k & 10k added, a few unused stationery items, generally fine. <b>(60+)</b>	400

**CHINA**

Ex Lot 1043

1043	*/O		<b>Mint &amp; used accumulation</b> with 1878 Coiling Dragon 1c green & 3c red x2 used, range of 1894 issues & overprints including '2/cents' on 3c yellow-green, 1897 Red Revenues overprints 'one cent' on 3c used (small thin) & '2/cents' on 3c unused (both apparently genuine), 1904 Postage Dues set mint, Sun Yat Sen & Martyrs including multiples, then some PRC and forerunners, also Treaty Ports including some used, groups of French, Japanese & Russian Offices in China, rather disorganised & condition mixed. Inspection recommended. <b>(100s)</b>	800
------	-----	--	--	-----

**NEW GUINEA - German (Deutsch) New Guinea****Ex Lot 1171**

**1171** CPS **INWARDS MAIL:** 1890 Bavarian 10pf Postal Card to Stephansort, 1897 triple-rate cover from NSW, 1905 uprated Russian Postal Card to "Sattelberg/bei Finschhafen", 1906 re-use of German 2pf+3pf Postal Card with 5pf Yacht added, 1908 uprated Austrian Postal Card, 1910 PPC from Japan, and three others, condition variable. (9) 600

**RUSSIA - Postal History****Lot 1388**

**1388** C B **1916 Orsk Goldfields (Eastern Siberia) cover to New Zealand with Arms 10k blue x3 tied Cyrillic 'NIKOLAYEVSK ON AMUR' cds with violet 'R' cachet on face and red/black local (Cyrillic lettering) and international (Roman lettering) 'Nikolaevsk, Sibirie, Russie' registration labels on back, carried via Japan and Australia with 'KOBÉ/2 9 16/JAPAN' and 'REGISTERED/20C16/SYDNEY,NSW' transit b/s, green & black New Zealand re-direction label (partly removed) tied by faint arrival marking. [The top left stamp has been removed and replaced with a similar stamp that sadly does not belong]** 450