

Lot Type Grading Description

Est \$A

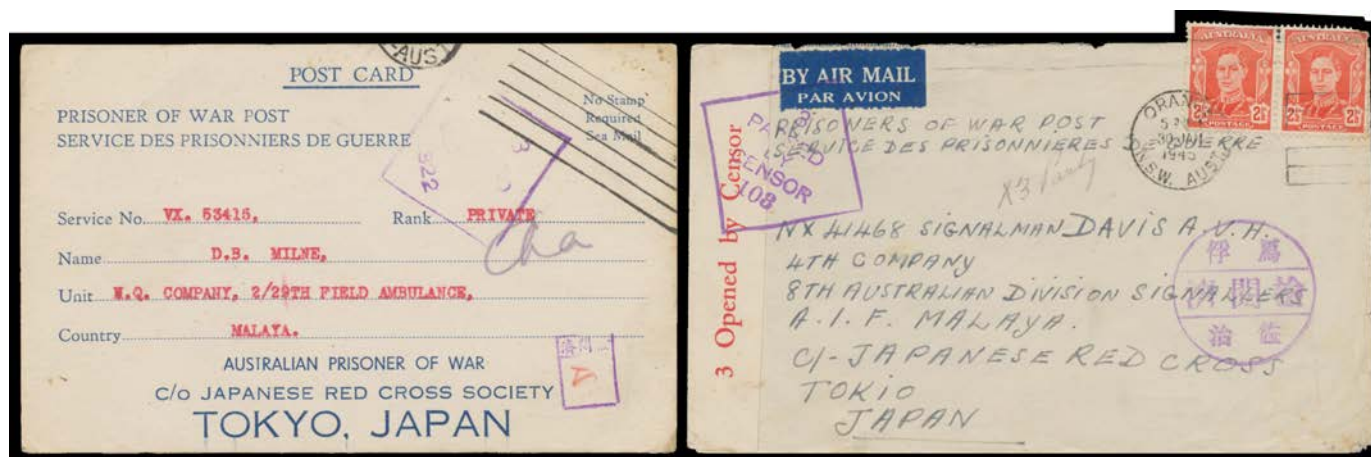
COMMONWEALTH OF AUSTRALIA - Postal History**Ex Lot 393**

393 C/CL A/B **1941-42** undeliverable commercial covers all intercepted & returned to the senders comprising covers to Singapore x4 (one with typed "DUPLICATE SHIPPING DOCUMENTS", another from GB to Sydney & redirected), to Forces in Malaya (soiled), to Malacca from Adelaide, to Penang from Adelaide & from Hobart, and to Bukit Mertajam from Melbourne, plus to Java x2, Sumatra, Thailand & Hong Kong x2, various censor handstamps and 'NO SERVICE/...', 'NOT TRANSMISSIBLE/...' or 'UNDELIVERABLE/...' h/s. *Ex Neil Russell. (15)*

450^T**AUSTRALIAN POWs IN MALAYA & SINGAPORE**

573 C **1942** "Selarang Incident" series of small second-generation photographs of crowded conditions, all endorsed on the reverse "Selarang Incident/Sept 1942", one badly creased/torn & rejoined and one a non-contemporary enlargement.

The British-built *Selarang Barracks* were used to house the overflow of POWs from Changi. After four POWs escaped & were recaptured, the Japanese demanded all POWs sign a "no escape" pledge. All but 3 refused. In response, almost 17,000 men were herded onto the parade ground where water supplies & latrines were in very short supply. Continued resistance resulted in the bungled execution of the four recent escapees. However, it was a dysentery epidemic that caused the camp officers to relent, & agree to the forms being signed "under duress". **(11)**

100^T**Ex Lot 574**

574 CPS A-/B **CHANGI - INWARDS MAIL:** Red Cross Envelopes with Three Thin Bars x3 or Thick Bar x5 (one with Japanese Red Cross cachet in rosine), Red Cross blue/white Postal Card with camp censor *Ta* chop; and by air plain covers at 5d rate x2 (one shortpaid 1d) & blue/white Postal Card uprated with 4d Koala with camp censor *Kinoshita* chop; well above-average condition. Some with transit times of between 9 & 18 months noted. **(12)**

1,000^T

AUSTRALIAN POWs IN MALAYA & SINGAPORE (continued)

Lot Type Grading Description

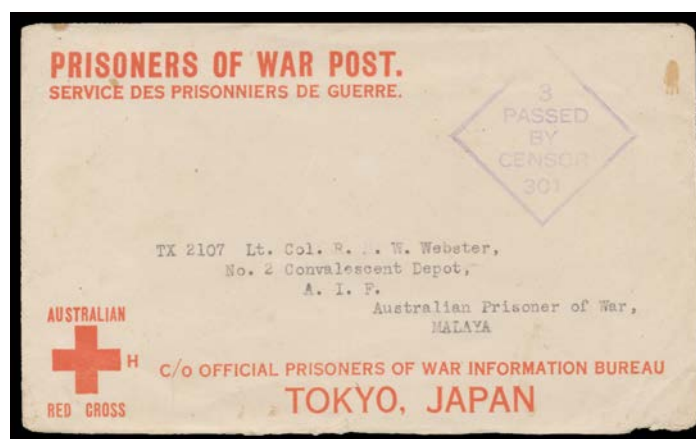
Est \$A

**Ex Lot 575**

575 CPS B - All-different identified camp censor cachets on plain cover with unnecessary 2½d payment (with the original enclosure), Red Cross Envelopes with Thick Bar x2, Red Cross blue/white Postal Card; and by air postcards red/white or blue/white x2 different types (one overpaid with 5½d Emu), minor blemishes. (8 items)

850^T**Ex Lot 576**

576 PS A-/B - All-different POW Postal Stationery comprising Red Cross Postal Cards blue/white x2 & black/white, Envelopes blue/white (with letter), black/white, or red/white with Three Thin Bars (with letter) or Thick Bar, and Lettersheets red/white or blue/white; POW Relatives Association Envelope; and generic-issue Postal Card blue/white, Envelope red/white & Airmail Envelope blue/white; six sent by air, a few are remarkably fine. Another very good lot. (15 items)

1,750^T**Ex Lot 577**

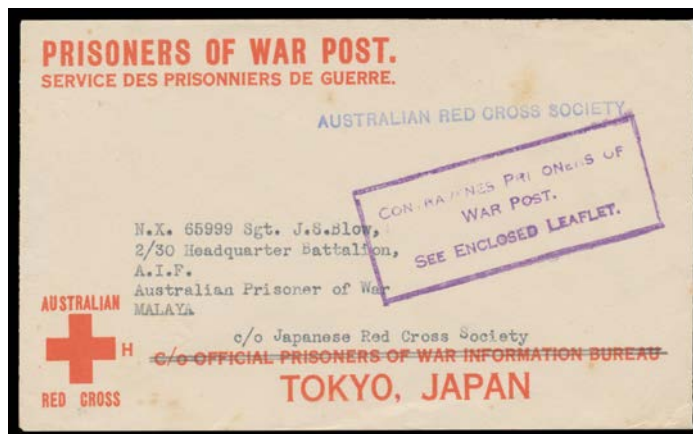
577 PS A-/B - Red Cross Envelopes with No Bars (rare), Single Ruled Line & typed "c/- Japanese Red Cross Society" (very scarce), Three Thin Bars, or Thick Bar, minor blemishes. Neil Russell states only one other example has been recorded with the POW Information Bureau line not obliterated. We have seen at least two others. (4)

750^T

AUSTRALIAN POWs IN MALAYA & SINGAPORE (continued)

Lot Type Grading Description

Est \$A



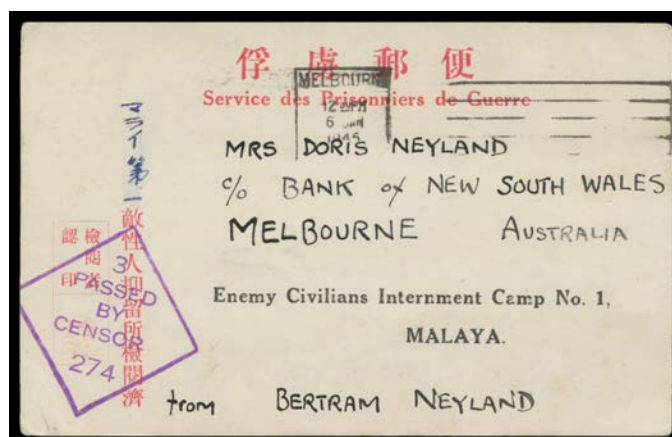
Lot 578

- 578 PS A- - Undated *Red Cross* Envelope with Single Ruled Line & typed "c/- Japanese Red Cross Society", largely superb strike of the very scarce boxed 'CONTRAVENES PRISONERS OF/WAR POST/SEE ENCLOSED LEAFLET' (that unfortunately is not present) in violet.

400^T

Lot 579

- 579 PS B - Undated *Red Cross* Envelope with Three Thin Bars to Changi with camp censor 'H KANNO' chop most unusually in Roman characters!, endorsed "DEC/42" (presumably the date of the letter, which is not present) & "N Paton 6th Nov 44", rounded corners. [Built in January 1944 & housing about 8000 patients, Nakom Paton was the principal POW hospital camp in Thailand, some 50km from Bangkok]
- 580 PS B - 1943 *Red Cross* Envelope with Thick Bar to Changi with Melbourne machine cancel of 5JUN/1943 & endorsed on arrival "Sime Rd", small faults. Sime Road Camp was a small facility at the *Singapore Golf Club*! [With the letter that was sent to the *Red Cross* in Melbourne under cover for on-forwarding. It took almost 2½ months to be processed by the *Red Cross* & the censors! The golf club, now the *Singapore Island Country Club*, is still in Sime Road]
- 581 PS B - 1945 use of blue/white POW Envelope updated with 5d Ram tied by Launceston cds of 28MAY/1945, endorsed "RTA" (= Returned to Australia), '.../RETURN TO SENDER' h/s largely erased & superb strike of boxed 'RETURNED IN UNDELIVERED MAILS/FROM TERRITORY FORMERLY OCCUPIED/BY JAPANESE FORCES' cachet in violet partly obscured by small OHMS redirection label.

300^T200^T250^T

Ex Lot 582

- 582 PS A/B **CHANGI - OUTWARDS MAIL:** 1943-44 red/white POW Postal Cards - three types, with different numbers of Japanese characters at left & one with 'Enemy Civilians Internment Camp No 1' stupidly printed in the address panel - three with personal camp censor chops of *Shimogohara*, *Kotani* or *Suzuki*, a few minor problems. [All the senders attest, one imagines ironically, to being in "the best of health"] (4)

750^T

COCOS ISLANDS - Postal History**Lot 1048**

1048 C A+ **1949** cover to *ER Leigh Parkin* at Direction Island with BMA Malaya 3c tied by superb strike of the 'C&W LTD/19NOV51/COCOS' cds, crude typeset 'Cocos-Keeling/Is' h/s on the reverse. Superb!

400^T**Lot 1050**

1050 C B **1950** *Leigh Parkin* airmail cover to his parents in Devon with typed 'R COCOS/0003' registration label & superb 'C&W LTD/1DEC50/COCOS' backstamp, Singapore 10c pair & 50c tied by 'MAXWELL ROAD/11DEC50/SINGAPORE' cds, the Cocos label not recognised & obscured by 'Singapore 10/2462' label (now removed but with the cover), Torquay arrival b/s of 15DE50, minor blemishes. An outstanding local administration registered cover.

1,000^T

Lot Type Grading Description Est \$A

INDIA

Apart from the airmail covers, the lots in this section are from the correspondence of a British engineer who went to India in the 1870s to work on the Railways. This material has never before been on the market & thus offers the prospect for real discovery. See also Lots 1077, 1100, 1408 & 1411, all from the same source.



Lot 1115

1115	C	A	<p>1848 cover to "Mr J Walch/Care of Major Walch/Wellington Bridge/Hobart Town/Van Diemen's Land" endorsed "Via Singapore/..." with very fine boxed 'POONA/1848JULY30/Paid ("2A") d/s in red, very fine boxed 'SINGAPORE/SHIP LETTER/184("8 Sep 5th/Bearing' (<i>Proud #SL1</i>; rated 3000 points) & almost superb 'GPO/[crown]/NO*28/1848/SOUTH AUSTRALIA' transit b/s & small '19DE19/1848' arrival b/s of Hobart. An outstanding origin/destination item in this period, especially for the scenic route via Singapore & Adelaide.</p> <p><i>Major James William Henry Walch</i> migrated from England in 1842 with his family including a son <i>Charles Edward Walch</i> with whom he formed the prominent Hobart firm of <i>J Walch & Son</i>, well known for their involvement in Tasmanian stamp & postal stationery production. Wellington Bridge was built in 1841 but now lies beneath the Elizabeth Street Mall, where it can still be seen through a viewing portal.</p>	1,000
-------------	---	---	---	-------

MALAYAN REGION



Ex Lot 1131

1131	ΩO		<p>Single-volume collection with many better stamps from Straits Settlements including 1867 Overprints to 12c on 4a unused & used (query if the overprints are genuine) & 'B' of Bangkok on CA 10c, FMS \$25 so lightly cancelled & with large-part o.g. that it could easily be passed-off as mint, States with quite a few values to \$5 unused or fiscal usages, Kelantan Chef's Hats used to \$1, Japanese Occupation that if genuine are worth a lot of money. (100s)</p>	1,000
-------------	----	--	--	-------



Ex Lot 1133

1133	*O	A/B	<p>STRAITS SETTLEMENTS: 1867 Surcharges on India 'THREE HALF-CENTS' x2 (one with large-part o.g) to '32 CENTS' on 2a SG 1-19 missing the 4c on 1a & 6c on 2a, characteristic wayward centring, the 8c on 2a & 24c on 8a a bit aged, Cat £1100. (8)</p>	400
1134	*	C C1	<p>- 1867-72 CC 2c brown with the <i>Watermark Inverted</i> SG 11w, a bit toned/aged, Cat £650.</p>	100



Lot 1135

1135	*	A B1	<p>- 1906 KEVII Wmk MCA \$25 grey-green & black SG 139 overprinted 'SPECIMEN', lightly mounted, Cat £475.</p>	380
-------------	---	------	---	-----

Lot Type Grading Description

Est \$A

NEW GUINEA - Mandated Territory Issues**Ex Lot 1205****1205**

C

A/B

WORLD WAR II CENSORSHIP: Batch of surface or domestic airmail covers with boxed 'Passed by Censor/TNG No 1' x3 (one to Penang with 'RETOUR [arrow]' cachet), '...No 2', '...No 6', '...No 8' x2 (one inwards from California) or '...No 25' x2 (one with '1 /NOT/OPENED BY/CENSOR/ 7 ' cachet of Brisbane), all but one with red/white 'OPENED BY CENSOR' label, also Forces cover with 4d Bulolo & Army censor cachet, generally fine to very fine. **(10)**

400^T