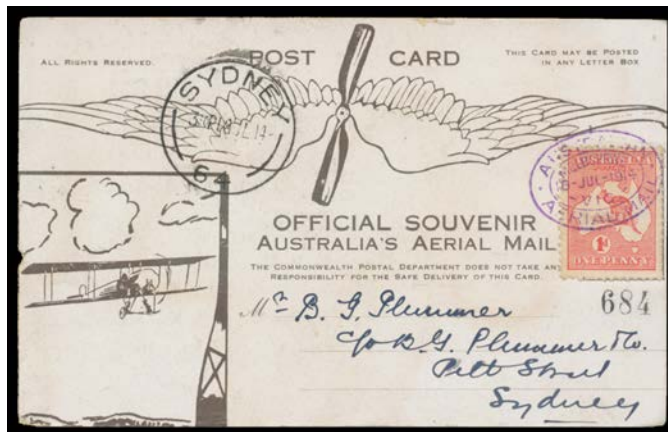


Lot Type Grading Description

Est \$A

COMMONWEALTH OF AUSTRALIA - Aerophilately & Flight Covers**Ex Lot 310**

310 C A/B **1914 (July)** souvenir postcard AAMC #3 x2 carried Melbourne-Sydney by *Maurice Guillaux* each with 1d Kangaroo tied 'AUSTRALIAN/AERIAL MAIL/MELBOURNE/16-JUL-1914/VIC' oval d/s in violet and 'SYDNEY/18JL14/64' arrival datestamp alongside, also two WWI AIF covers including one from Sudan to *Brigadier-General NM Smyth* in France and three 1930s inwards airmail covers from Burma, France with perfins, & Indo-China via Bangkok, condition a little mixed but overall fine. (7)

400

COMMONWEALTH OF AUSTRALIA - Postal History**Ex Lot 361**

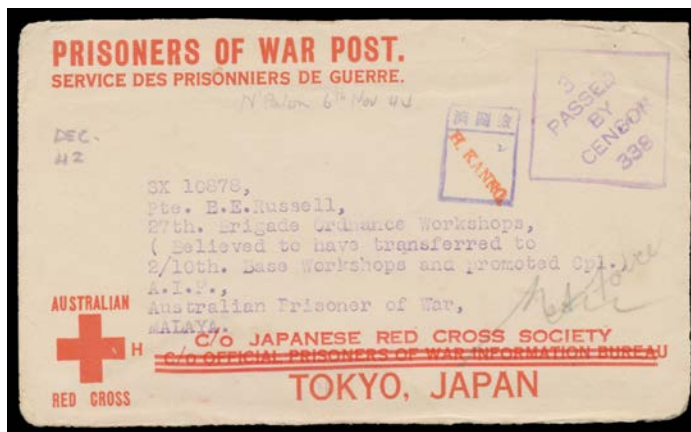
361 C A/B **1900s-70s covers accumulation** noted Kangaroos 2d Second Wmk 'OS' punctures x3 on *House of Representatives* long cover, a few Colonial items including NSW 1d Arms 'OS' on *Royal Commission on the Fruit Industry* cover, group of inwards mail to Australia noted Russia 1917 registered with Japanese 'OFFICIALLY SEALED' labels tied 'Damage Repaired' cachets, Great Britain 1937 KGV 1/2d envelope with 'CUSTOMS DUTY/1/2D/TO PAY' cachet in red, Hong Kong 1940 from 'RN Hospital' with oval 'PASSED BY CENSOR/218' cachet in blue, Thailand censored airmail with 'SIJOL' cds, WWII Forces in Egypt airmails & a few picture postcards, also quantity of 1940s-70s FDCs with official & private cachets including *Sigma* and other drug companies, mixed condition. (100s)

400

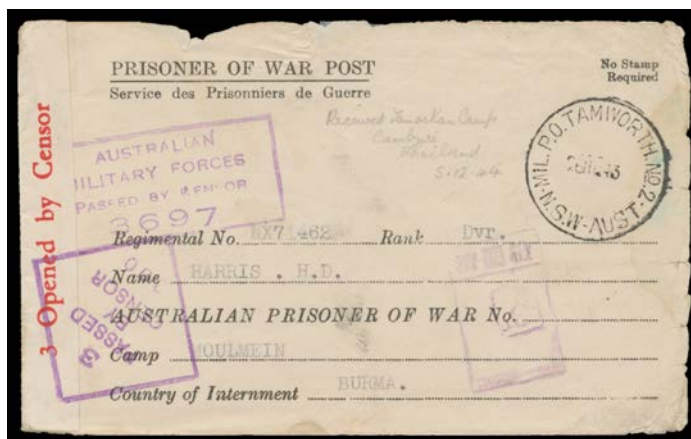
COMMONWEALTH OF AUSTRALIA - Airmail Covers - World War II**Ex Lot 419**

419 C/CL A/B **INWARDS:** 1940-42 trans-Pacific group from GB x4 (three are naval usages), United States x3 (one with 5c Beacon x6), China or Brazil, plus transits via Australia from India at 3r4a rate, and from Thailand at 1t75stg rate x2; finally two covers per US *Naval Air Transport Service* at \$2.55 rate with *Prexies* 2c 3c & 50c x5 or \$2.80 with *Prexies* 20c & 50c x5 + 10c Plane; a few minor faults. (14)

600T

AUSTRALIAN POWs IN MALAYA & SINGAPORE**Lot 579**

579 PS B **CHANGI - INWARDS MAIL:** Undated Red Cross Envelope with Three Thin Bars to Changi with camp censor 'H KANNO' chop most unusually in Roman characters!, endorsed "DEC/42" (presumably the date of the letter, which is not present) & "N Paton 6th Nov 44", rounded corners. [Built in January 1944 & housing about 8000 patients, Nakom Paton was the principal POW hospital camp in Thailand, some 50km from Bangkok]

300^T**AUSTRALIAN POWs IN BURMA****Lot 594**

594 PS C **MOULMEIN:** 1943 black/white POW Envelope to "Moulmein Burma" from NSW with 'MIL PO TAMWORTH No 2' cds & camp censor *Adachi* cachet, forwarded to Thailand with addressee's endorsement "Received Tamarkan Camp/Canburi/ Thailand/5.12.44", a transit period of "only" 13 months, a few defects but quite presentable.

250^T**AUSTRALIAN POWs IN THAILAND****Ex Lot 597**

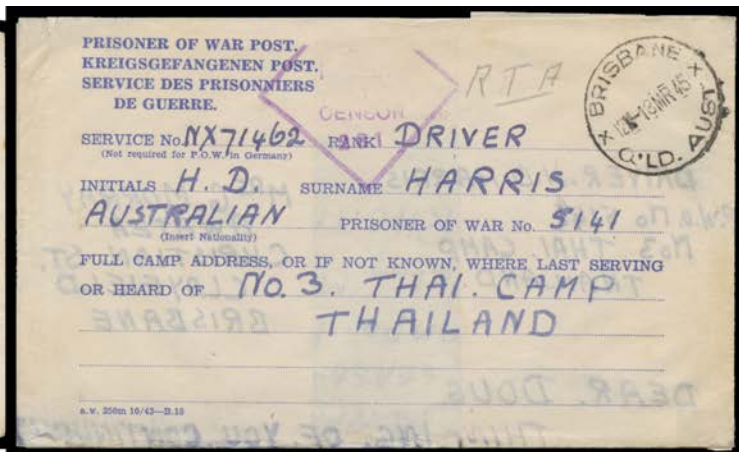
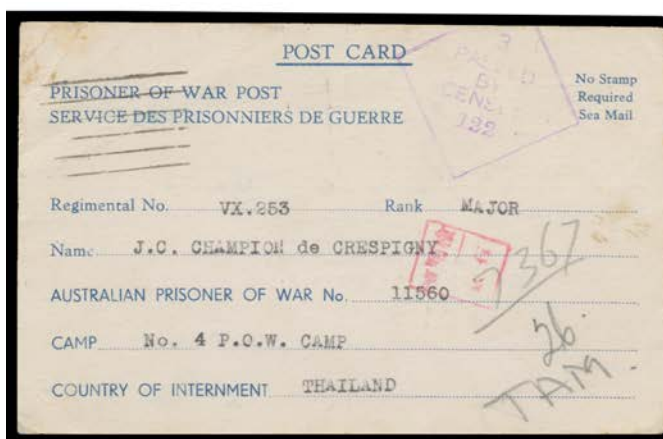
597 C A-/B Series of small second-generation photographs of the infamous Burma-Thailand Railway with railway cuttings & bridges (including after being bombed by the RAF), camp scenes including hospital ward & POW theatre, POW funeral & the cemetery at Kanburi, "Golden Arrow Express" (carloads of coolies), etc, ink notations on the reverse. Exceptional background material. (23)

200^T

AUSTRALIAN POWs IN THAILAND (continued)

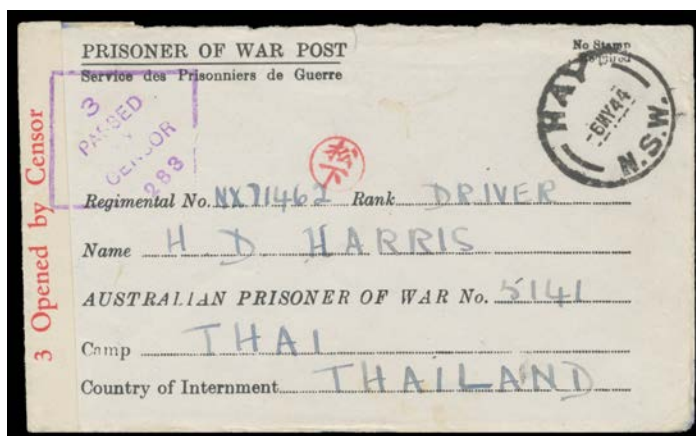
Lot Type Grading Description

Est \$A

**Ex Lot 598**

598 CPS

1943-45 mail to **Camp No 1 (Nong Pladuk)** POW Postal Card by air endorsed "RTA" & with small redirection label, with the enclosed letter; **Camp No 2 (Chungkai)** plain cover & blue/white POW Envelope both by air; **Camp No 3 (Nike or Nieke)** blue/white Red Cross lettersheet endorsed "RTA"; **Camp No 4 (Tamuang)** plain cover by air with censor Sato cachet, four different blue/white POW Postal Cards (two by surface both with censor Ishikura cachet, one undeliverable & returned); and an undesignated camp black/white POW Envelope & blue/white Red Cross lettersheet with censor Matsushita or Adachi cachets; condition variable. A very good lot. [All four camps were along the infamous Burma-Siam Railway] (12 items)

2,500^T**Ex Lot 599**

599 PS A-

1944 black/white POW Envelope to an undesignated camp with 'HAY/NSW' cds & camp censor Matsushita cachet, with the enclosed letter. Unusually fine for such material. (2 items)

250^T**Lot 600**

600 PS B

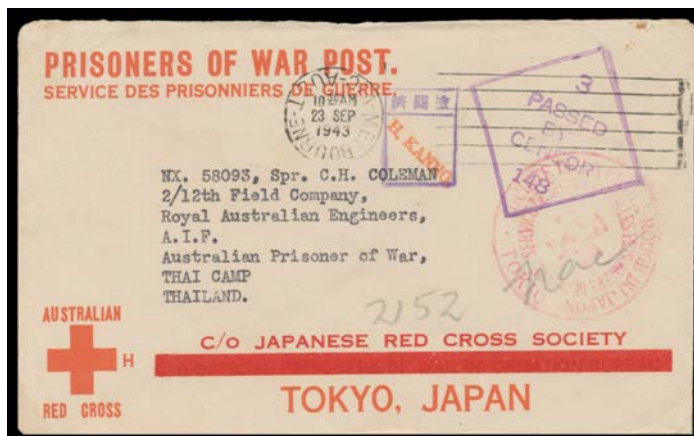
Red Cross Envelope with Three Thin Bars from South Australia with Melbourne censor cachet unusually in blue, to Changi where redirected to "Nak" (= Nakon Prakom), unidentified camp censor cachet in violet, endorsed "Sept 42" - presumably the date of the letter - & "N Pakon 14th March 45" indicating a total transit time of 30 months! [Built in January 1944 & housing about 8000 patients, Nakom Paton was the principal POW hospital camp in Thailand]

300^T

AUSTRALIAN POWs IN THAILAND (continued)

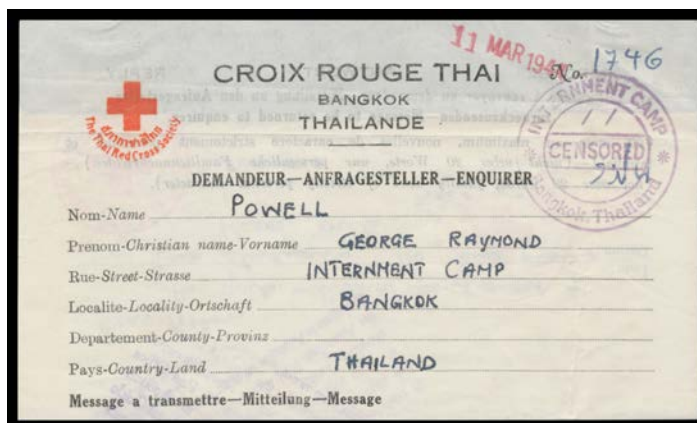
Lot Type Grading Description

Est \$A



Lot 601

- 601 PS A- Red Cross Envelope with Thick Bar from NSW with Melbourne machine cancel (most unusually with the datehead inverted), to undesignated camp with mss "Nac" (= Nakom Paton), Camp censor's cachet 'H KANNO' most unusually in Roman letters!

300^T

Lot 602

- 602 C A- 1943 (June 4) Thai Red Cross message form to Victoria with 'INTERMENT CAMP/CENSORED/Bangkok, Thailand' cachet and Thai & Swiss Red Cross cachets both in rosine. [From George Raymond Powell, stated to be the only Australian civilian internee in Thailand! Powell sent 14 of these forms during the the war, of which five have survived, this being the third sent]

400^T

Lot 603

- 603 PS B CAMP No 1: Undated Postal Card printed in black & red on cream with advice of internment on grey reverse, to Tasmania with camp censor Suzuki & Koseki cachets in red, Melbourne censor cachet in violet. The sender was a member of "Sparrow" Force, captured on Timor.

250^T

AUSTRALIAN POWs IN THAILAND (continued)

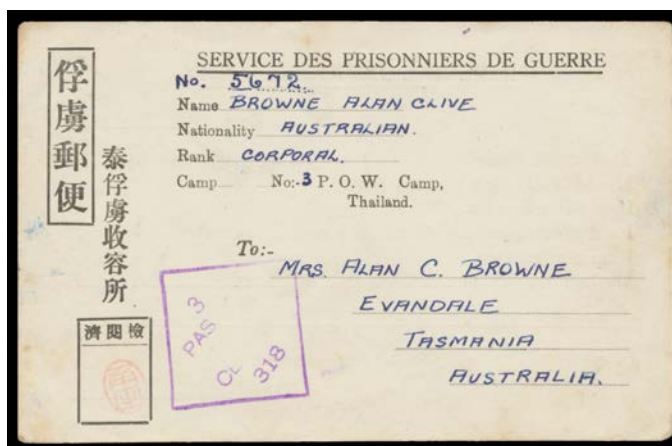
Lot Type Grading Description

Est \$A



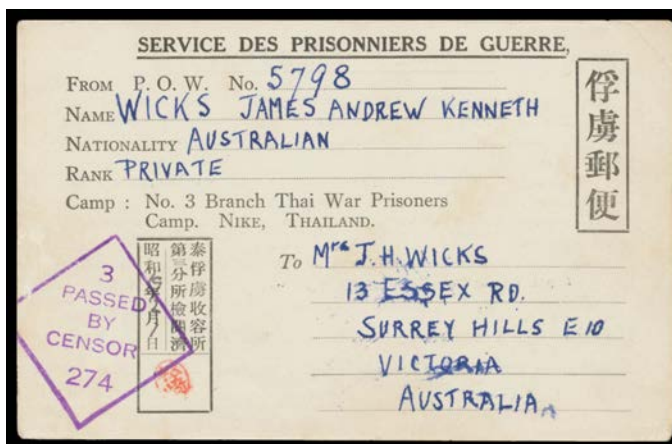
Ex Lot 604

- 604** PS/C A/B - Undated Postal Card printed in black & red on cream with advice of internment on grey reverse, to NSW with camp censor *Suzuki* cachet in red, Melbourne censor cachet in violet; plus plain cover with 'SERVICE OF PRISONERS OF WAR' cachet in violet registered with Sydney cds of 2DE43 & 'TUMUT/NSW' arrival b/s. The cover is stated to be the envelope in which the postcard was received, which may be so but how did the card get from Melbourne to Sydney?? (2)

350^T

Ex Lot 605

- 605** PS A-/B **CAMP No 3:** Undated Postal Cards 1) with 'Camp No ("3") POW Camp/Thailand' imprint on the face & brief multi-choice message, to Tasmania; and 2) with 'No 3 Branch Thai War Prisoners/Camp. NIKE THAILAND' & lengthier *pro forma* message including "With best wishes for a cheerful Christmas", to South Australia; with camp censor *Tsunoda* (*Sumita*) or *Yamada* cachets in red, Melbourne censor cachets in violet, minor blemishes. (2)

500^T

Lot 606

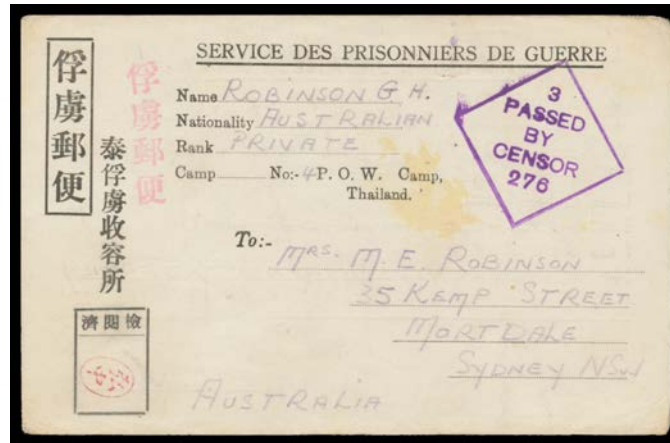
- 606** PS A- - Undated Postal Card with 'No 3 Branch Thai War Prisoners/Camp. NIKE THAILAND' & lengthy *pro forma* message including "With best wishes for a cheerful Christmas" & added message "Thailand heaven after Burma" which suggests camp censor *Matsuzaki* couldn't read English!, to Victoria with Melbourne censor cachet in violet, minor blemishes.

250^T

AUSTRALIAN POWs IN THAILAND (continued)

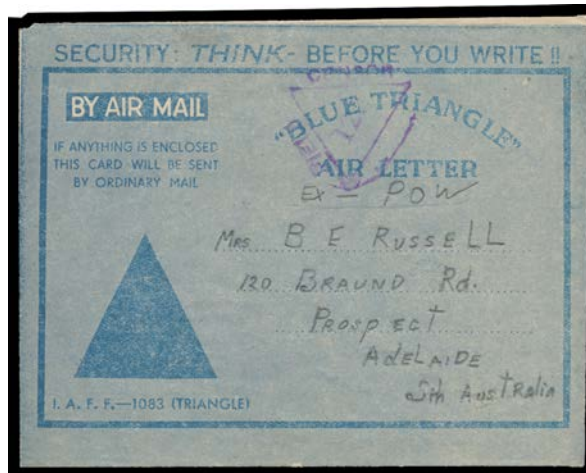
Lot Type Grading Description

Est \$A



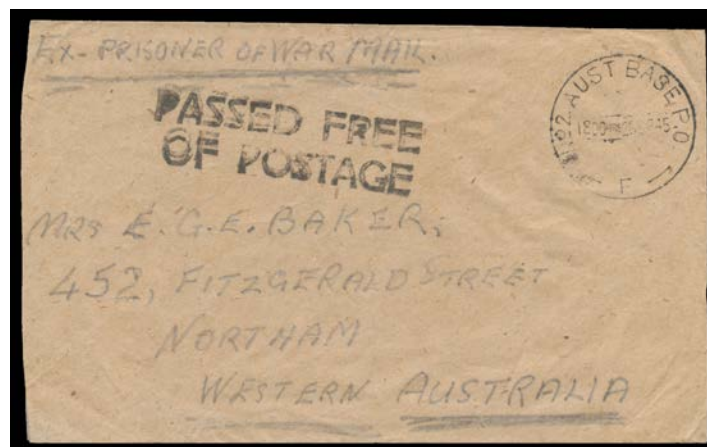
Ex Lot 607

607 PS B **CAMP No 4:** Undated Postal Cards black/flimsy white with 'Camp No ("4") POW Camp/Thailand' imprint on the face & brief multi-choice message in black/grey, to Tasmania; camp censor *Hattori*, *Hironaka* or *Suzuki* cachets, Melbourne censor cachets in violet, minor blemishes. (3)

650^T**LIBERATED POWs RECEPTION CENTRES**

Lot 630

630 PS A **BANGKOK:** 1945 (Sep 3) usage of British "Blue Triangle" formular aerogramme endorsed "Ex - POW", to South Australia. The writer states "...[Brian] sent a letter with me but as it was written on the wrong type of paper authorities would not accept it...Eric Smith has right leg amputated..." & names five friends who "are all dead".

400^T

Lot 631

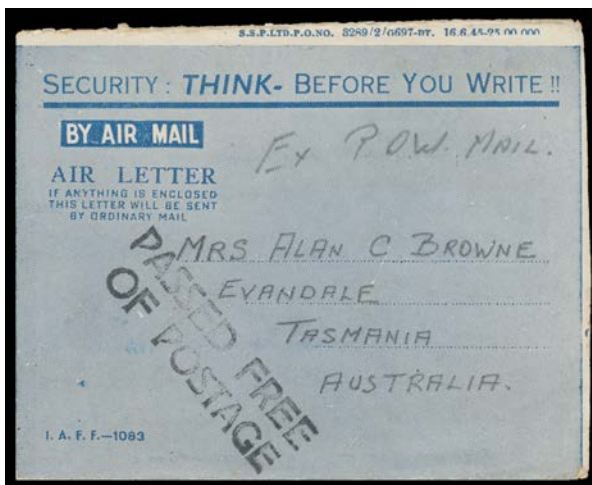
631 C B - 1945 (Sep 26) plain envelope endorsed "Ex prisoner of War Mail" & on the reverse "AIF (Bangkok Siam)", to Western Australia with 'PASSED FREE/OF POSTAGE' cachet & 'No2 AUST BASE PO/ F ' cds used at Melbourne. [Phil Collas says No 2 Base PO E & F cds "...had little usage, examples...being rare]

300^T

LIBERATED POWs RECEPTION CENTRES (continued)

Lot Type Grading Description

Est \$A

**Lot 632**

632	PS	B	- 1945 (Sep 16) usage of British formular aerogramme endorsed "Ex POW Mail", to Tasmania with 'PASSED FREE/OF POSTAGE' cachet, message headed "Thialand" [sic] & states "...Working in the hospital certainly saved me from a lot of hard work...I am thoroughly tired of looking after serious dysentery patients...we are the furthest camp from Bangkok and will be last to leave..."
------------	----	---	--

400^T**THAILAND - Postal History**

1400	C	B	1896 (June 17) cover to London with Second Issue 12 atts vertical pair tied by 'BANGKOK/ 1 ' cds, superb boxed 'R' h/s, London arrival datestamp in red on the face, seal cut from the flap. <i>Ex Len Colgan.</i>
------	---	---	---

300

**Lot 1401**

1401	PS	B	1898 usage of GB ½d Postal Card with printed notice for <i>Henry King newspaper agents</i> uprated with ½d orange perf 'K', to "WAG Tilleke/Acting Attorney General/Bangkok/Siam" with very fine 'BANGKOK/ 2 ' arrival cds on the face, minor blemishes. <i>Ex Len Colgan</i> : acquired at the <i>Prestige</i> auction of 24.6.2011 for \$529.
1402	PS	B	1904 apparently commercial usage of Egyptian 5m Envelope uprated with 5m tied by 'ALEXANDRIA' cds, to "Kelantan/Via Singapore", 'SUEZ' & 'SINGAPORE' transit & light but obvious Siamese-pattern 'KELANTAN/21.8.04' arrival b/s, minor blemishes. Terrific origin/destination item. [Kelantan was ceded to Great Britain only on 15.7.1909]
1403	C	A-	- (May 26) commercial cover to England with 4-colour franking of 1899 1a 2a pair 3a & 4a tied by Bangkok 2 cds, very fine 'OXFORD' arrival backstamp. <i>Ex Len Colgan.</i>

450

300

300

THAILAND - Postal History (continued)

Lot Type Grading Description

Est \$A



Lot 1404

- 1404** C B **1905** (Jan 27) cover with imprint of 'Fr Grahlert & Co, Court Jewellers, Bangkok, Siam' at top, to a director of the *Shantung Railway Company* in "Tsingtau/Kiautschou", 1904 4a 6a & 14a all tied by 'BANGKOK/ 2' cds, bilingual registration cachet in blue at lower-left, faint poor Hong Kong backstamp & bilingual Shanghai transit cds on the face, very fine 'KAUMI/DEUTSCHE POST' arrival backstamp, minor blemishes. Scarce destination. *Ex Len Colgan*: acquired at the *Prestige* auction of 24.6.2011 for \$2530. [Kaumi PO 5/7/1901; closed 31/3/1906]

2,000



Lot 1405

- 1405** C A+ **1909** cover to Germany with Jubilee Overprints 3 atts pair & '4' on 5 atts *Narrow Surcharge H #122b* tied by Bangkok 2 cds, sender's endorsement of a *Ned-Lloyd* ship's officer from Hong Kong on the flap. Superb! *Ex Len Colgan*: acquired at the *Prestige* auction of 24.6.2011 for \$506.

450



Lot 1406

- 1406** C A - cover to Germany with 1909 (Aug) Surcharges 2stg on 1a, 3stg on 3a, 6stg on 4a x2 & 14stg on 9a tied by Bangkok cds. *Ex Len Colgan*: acquired at the *Prestige* auction of 24.6.2011 for \$299.

250