

Lot	Type	Grading	Description	Est \$A
-----	------	---------	-------------	---------

OTHER PRE-DECIMALS - Official Stamps

All the lots in this section are from "Pollie's Find", an array of mostly official stamps being offered for the very first time.

192	**		PUNCTURED 'OS' : 1928 Kookaburra 3d ACSC #133ba irregular block of 35, mostly well centred, overall aging of the gum & some creasing, also 1929 WA Centenary 1½d very fine block of 4, unmounted, Cat \$1850+. (2 blocks)	300
193	**	A/B	- 1929 WA Centenary 1½d ACSC #138ba irregular block of 55 with <i>John Ash Imprint</i> , variable centring, some minor perf separation & a few minor faults, unmounted, Cat \$1600+.	300
201	**	A+ A1	OVERPRINTED 'OS' : 1932 Large Lyrebird 1/- ACSC #145(OS) vertical corner strip of 5, excellent centring, unmounted, Cat \$650+.	150
202	**	A+ B1	- 1932 Large Lyrebird 1/- ACSC #145(OS) corner block of 10 (2x5), mostly well centred, unmounted, Cat \$1250+. Superb! Blocks this large are rarely seen.	400

BRITISH COMMONWEALTH OCCUPATION FORCES (B.C.O.F.)

206	C	A/B	1948-51 commercial covers with <i>Spelling Errors</i> in the registration cachets 1) with UPS 453 cds & 'SEAVICE' for 'SERVICE'; a bit wrinkled ; 2) with UPS 388 cds & 'Servise' for 'Service'; 3) with UPS 496 cds & 'Servise' for 'Service'; & 4) with APO 215 cds used at Kure, & 'POSTAR' for 'POSTAL' in blue, opened-out. (4)	160
-----	---	-----	---	-----

COMMONWEALTH OF AUSTRALIA - First Day Covers**Lot 263**

263	C	A	1928 International Exhibition Kookaburra M/S on plain cover - Exhibition advertising in blue on the flap - by the Exhibition cds of 29OC28 in red with another strike alongside, unaddressed & the flap unsealed so it can be opened-out for display, Cat \$1500.	600
267	C	A	1932 Large Lyrebird 1/- green tied to <i>Doodlakine Farmers Co-Operative Company Ltd</i> cover by 'DOODLAKINE/15FEB32/WESTERN AUSTRALIA' cds (damaged frame) ACSC #145y, Cat \$375.	200

COMMONWEALTH OF AUSTRALIA - Military - World War II

337	C	A-	1942 stampless " <i>Sparrow Force</i> " cover to Hobart with small 'HM TRANSPORT' h/s - used aboard HMT "Westralia" or "Zealandia" - overstruck with light but obvious 'FIELD POST OFFICE/18JA42/ 071' - <i>Ted Proud</i> "NS" = Not Seen - in violet used at Koepang (East Timor), boxed AIF Censor 305 h/s in violet countersigned "S Frost".	300 ^T
-----	---	----	--	------------------

NEW SOUTH WALES - Postal History**Lot 407**

407	C	B	1896 large-part parcel tag (the eyelet removed) registered to a bank in Sydney with rare franking of Centennial 6d block of 8 + 1d & 2d all tied to the reverse by neat strikes of Rays '97' of 'WALCHA' (cds on the face), minor creasing. A rare usage. [At the time, the highest parcel rate was 2/11d. It is likely that the packet contained ore samples & was sent at the Samples & Merchandise rate of 1d per 2oz x48 = 4/- + 3d registration]	250 ^T
------------	---	---	--	------------------

Lot	Type	Grading	Description	Est \$A
-----	------	---------	-------------	---------

SOUTH AUSTRALIA - Postal History

436	C	B	1859 cover to London "per Emeu" with very scarce franking of First Roulettes 6d slate-blue SG 17 tied by 'PAID/OC18/1859/=ADELAIDE-S.A.=' cds in blue, 'LONDON-SW/ A5 /DE14/59' arrival b/s, minor soiling & wrinkling. Ex <i>Rose</i> (1960) & <i>Michael Blake</i> . Carried per "Emeu", departed Melbourne 18.10.1859; & "Ripon", departed Alexandria 30.11.1859, arrived Southampton 14.12.1859.	150
-----	---	---	---	-----

VICTORIA - Barred Numeral Cancellations

We are pleased to offer the first part of the important collection formed by Max Watson from Melbourne. Considered by many collectors to be second in scale and importance only to Hugh Freeman's holdings, the collection includes many exceedingly rare and exceptional strikes. This is probably the finest and most extensive array of highly-rated strikes ever offered as single lots at public auction. To encourage competition, the estimates are very conservative. NB: A few items offered here are sub-optimal but we believe they are all correctly identified.



Lot 555

555	S	B A2-	297: Of King Parrot Creek (1) very fine strike on <i>Beaded Ovals</i> 4d. Rated RRRRR. PO 7.6.1860; closed 31.1.1863. [<i>Goldmining</i>]	600
-----	---	-------	--	-----



Lot 612

612	S	B B2	795: Of Magpie largely fine strike on 1d pink. Rated RRRR. [<i>Goldmining. Central Highlands</i>]	150
-----	---	------	--	-----



Lot 658

658	S	A B2	1262: 'MCC/62' of Emu Vale largely fine strike on <i>Naish</i> 1d. Rated RRR. [<i>Gippsland</i>]	100
-----	---	------	---	-----

WESTERN AUSTRALIA

796	O		Stockbook with heavily duplicated array of 1d pinks & 2d yellows with many shades, multiples, 'OS' punctures, commercial perfins, etc, some postmark interest, generally very fine. (100s)	250
797	F	A	1854 "Penny Black" Rouletted 1d black SG 2, rouletted except at right, fine 15-bars '3' cancel of Fremantle, Cat £700.	250 ^T



Lot 798

798	Ω	A	1854-55 Lithographs 4d slate-blue SG 3c, margins good to large, unused, Cat £2750. Ex <i>Trevor Hiscock. RPSofV Certificate</i> (2013). [This is an intermediate shade, not as deep as most "slate blues"]	1,000
799	Ω	(A)	- 1/- deep red-brown SG 4a marginal example from the base of the sheet, margins just clear to huge, ironed-out vertical crease at right, unused, Cat £2000. Ex <i>Trevor Hiscock. RPSofV Certificate</i> (2005).	500

WESTERN AUSTRALIA (continued)

Lot Type Grading Description

Est \$A

**Lot 800**

800 F A+ **1857 Hillman Lithographs** 6d grey-black SG 19, margins just touching to large with a fragment of the adjoining unit above, 15-bars '8' cancel of Fremantle, Cat £550. Superb! *Ex Trevor Hiscock. RPSofV Certificate (2014).* 400

**Lot 801**

801 P A **1861 Perkins Bacon** 1/- horizontal plate proof pair in deep green with the *Watermark Sideways*, a gorgeous rich shade, margins close to large. Rare. *Ex Trevor Hiscock.* 600

**Lot 802**

802 * A A1 **1882-85 CA** Perf 14 2d chrome-yellow SG 77 block of 9, exceptional centring, very lightly mounted with virtually full o.g., Cat £378++. A delightful block. 800^T

WESTERN AUSTRALIA (continued)

Lot Type Grading Description

Est \$A



Lot 803

803	*/**	A	1902-11 V/Crown Mixed Perfs 1d rose-pink Perf 12½ block of 4 with an <i>Additional Horizontal Line of Perf 11 at Top & Centrally</i> , large-part o.g. the lower units being unmounted. Unlisted by both <i>Gibbons</i> & the <i>ACSC</i> . Ex <i>Trevor Hiscock</i> . <i>Chris Ceremuga Certificate</i> (2014). [The Compound Perf 12½x11 SG 135 catalogues \$5000++ (£5200++) for four mounted singles]	2,750
804	*	A+ B1	1905-12 Crown/A Perf 11 Swan 3d brown with the <i>Crown/A Watermark Sideways (Reversed)</i> BW #W28aa (SG 153var), marginal example from the base of the upper pane, large-part o.g., Cat \$750. <i>RPSofV Certificate</i> (2016).	250
805	Ω	A-	LOCAL STAMPS: 1897 <i>Coolgardie Cycle Express Camels</i> 2/- & 5/-, unused with no gum. (2)	250



Ex Lot 806

806	*	A B1	- 1897 <i>Coolgardie Cycle Express Camels</i> 6d 2/- & 5/-, characteristic "sandy" gum. (3)	600
-----	---	------	---	-----



Lot 807

807	Ω	C	- 1897 <i>Lake Lefroy Goldfield</i> Swan 6d pink/green, good colour, perf faults, unused. A presentable example of this scarce Goldfields local. [Unrecorded in the <i>Pope & Reynolds Census</i>]	600 ^T
-----	---	---	---	------------------

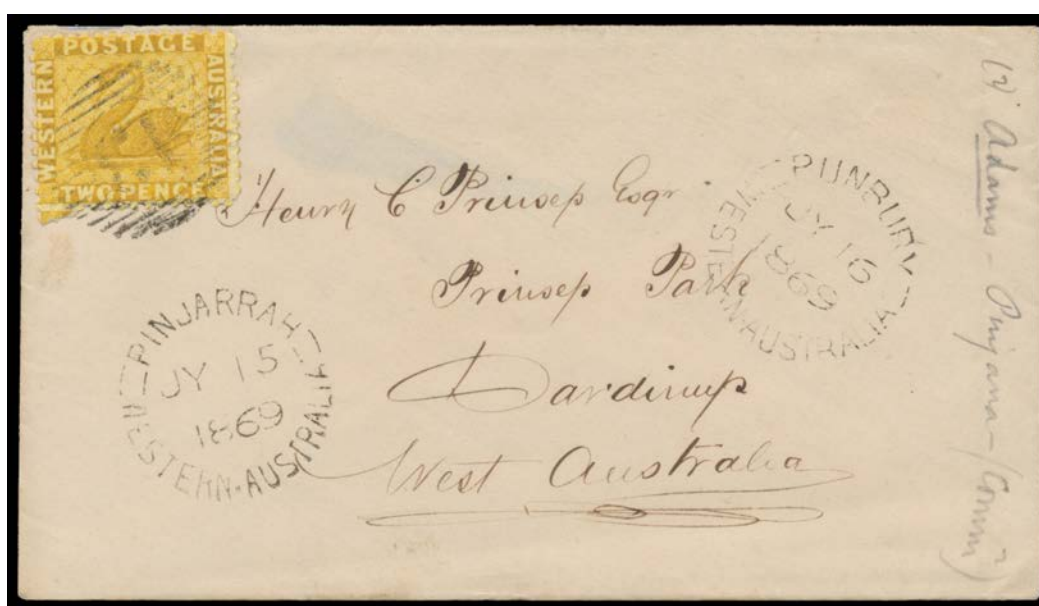
Lot Type Grading Description

Est \$A

WESTERN AUSTRALIA - Postal History**Ex Lot 808**

808 C/CL A/B 1891 1d Postal Card to Vic with Albany KGS duplex; 1898 *Orient Line* cover to GB with GB 2½d tied by Albany PO duplex; and 1913 OHMS cover with 2d punctured 'OS' pair, 'CUE' cds & superb DLO boxed d/s. (3)

200

**Lot 809**

809 C B 1869 cover to "Henry Prinsep/Prinsep Park/Dardinup" [sic] with 2d yellow-bistre tied by light but obvious 15-bar '13' & very fine 'PINJARRAH/JY15/1869'=WESTERN-AUSTRALIA=' cds below, same-type 'BUNBURY' cds of the next day also on the face, flap fault. Not listed in the *Pope & Reynolds Census*. [Henry Charles Prinsep arrived 25.5.1866 from Singapore. He was a draftsman with the *Lands Department*; later *Under-Secretary for Mines & Protector of Aborigines*. He was also *JG Bussell's* son-in-law, and illustrated accounts of expeditions lead by *Forrest & Giles*]

500

WESTERN AUSTRALIA - Postal History (continued)

Lot Type Grading Description

Est \$A



Lot 810

810	C	B	1876 cover to "Captain Smith/Police Department/Perth" with Perf 12½ 2d yellow SG 55 tied by largely fine 12-bar '27' (ERD), largely fine strike of the rare 'BANNISTER/("18 12 76")=WESTERN AUSTRALIA=' h/s at lower-left, Perth Maltese Cross arrival b/s, minor soiling. <i>Pope & Reynolds Census</i> #1, the earlier of only two recorded covers. <i>Ex Cecil Walkley</i> : acquired at the <i>Prestige</i> auction of 27.11.2010 for \$1840. PO opened 1/12/1869: 80km SE of Armadale. [Matthew Skinner Smith arrived 5/6/1868 on the "Lady Louisa". Superintendent of Police 1871-77 & responsible for re-organising the Department]	1,500
-----	---	---	--	-------



Lot 811

811	C	B	1882 cover to "Very Rev N Gibney/Perth" with Perf 14 1d pair tied by very fine 12-bar '29' cancel & equally fine strike of the rare unframed-oval 'KOJONUP/["16-2-82"]/WESTERN AUSTRALIA' with manuscript date, a little soiled. The latest of only three covers recorded in the <i>Pope & Reynolds Census</i> . [Rev Matthew Gibney arrived in the Colony 12.12.1863 per "Tartar". Catholic Church administrator & Vicar-General 1871, Bishop 1887-1910. Amazingly, he was present at the capture of Ned Kelly at Glenrowan (Vic) on 28.6.1880]	1,500
812	C	A-	1890 cover to Guildford with 1d x2 tied by very fine strikes of 15-bar '23' cancel & unframed 'GINGIN/["9.9"]/18["90"]/=WESTERN-AUSTRALIA=' cds, Guildford duplex arrival b/s of the next day, with unsigned 7pp octavo letter. <i>Pope & Reynolds Census</i> #28.	300
813	C/CL	B/A	1899 OPSO envelope with 'WESTERN AUSTRALIAN INTERNATIONAL/MINING AND INDUSTRIAL EXHIBITION/COOLGARDIE, 1899' imprint (upper-case) at lower-left, 'WESTERN AUSTRALIAN [EXHIBITION]/FRANK/[swan]/STAMP/COOLGARDIE 1898' large-part very fine strike, unusually not cancelled, opened a little roughly; also 1937 <i>Marvel Loch Gold</i> airmail cover Kalgoorlie-Adelaide. (2 items)	250

WESTERN AUSTRALIA - Postal History (continued)

Lot	Type	Grading	Description	Est \$A
-----	------	---------	-------------	---------

**Ex Lot 814**

814	C	A/A-	1906 (c.) <i>Rae Brothers</i> pictorial envelopes "set" of 12 views comprising a) with 'Rae Brothers Perth' imprint "CLAREMONT", "MUNDARING WEIR", "PERTH FROM MT ELIZA", "PERTH R STATION" (with tram), "THE ZOO PERTH" & "WATCHING INTER 8-OAR BOAT RACE PERTH 1906"; or b) without imprint "HOLIDAYING ON THE SWAN", "NEW COURT HOUSES PERTH" (with tram), "PARLIAMENT HOUSES PERTH", "THE ESPLANADE PERTH", "WA BLACKS AT BREAKFAST" (a previously unrecorded view) & "WA GINS SMOKE OH", some very fresh, others with very minor blemishes mostly on the reverse, unused. A rare group. (12)	750
815	PS	A	WRAPPERS: 1903 Single-Lined Borders ½d emerald with 106mm Between the Lines Pope #WR3.1 to Scotland uprated with ½d grey-green tied by light 'CLAREMONT' cds, Cat \$400.	250 ^T
816	PS	A	- 1904 Single-Line Borders 1d red with 99mm Between the Lines Pope #WR4 to Germany in 1909 with 'STAMP/ISSUERS OFFICE/21OCT1909/GPO PERTH WA' d/s in violet, Perth machine cancel, German '64'-in-circle postman's delivery handstamp.	200

WESTERN AUSTRALIA - Postmarks**Ex Lot 817**

817	O		Collection of 1d & 2d Swans in large stockbook with lots of duplication but we noted 'BRUNSWICK', 'BURBANKS', 'SAVINGS BANK/COLLIE WA', 'COLLIE FIELDS', 'DUKETON', 'ERROLS FIND', 'GULLAWA', 'ISRAELITE BAY', 'MT SIR SAMUEL', 'NIAGARA', 'SOUTH KALGOORLIE', 'THE GRANITES', etc. (100s)	500
818	CPS		Album of mostly PPCs including with BN '17' & 'AUSTRALIND' "tie" x3, 'COOKERNUP/WA-PO' duplex x20, 'ISRAELITE BAY', 'MENZIES/WESTERN AUSTRALIA - PO' duplex x2, etc, condition variable. (150 approx)	200

**Lot 819**

819	S	A B3	Appadene: 'APPADENE/14MY26/[WESTER]N AU[STRALIA]' (RO period) largely fine on KGV 1½d red. The earlier of only two recorded strikes. Group Settlement No 83. RO 15.1.1924; PO 1.7.1927; closed 15.7.1929. [11km north of Manjimup]	200 ^T
-----	---	------	---	------------------

WESTERN AUSTRALIA - Postmarks (continued)

Lot Type Grading Description

Est \$A



Lot 820

820	O	B B1	Bornholm: 'YONGA/13MR14/SWESTN AUST' cds (after name change) on 1d Roo on cover to UK, minor edge faults and flap removed. Martinup renamed Yonga 30.12.1912; renamed Bornholm 1.1.1914. [32km W Albany]	200
-----	---	------	---	-----



Lot 821

821	S	A A1-	Norlup: 'NORLUP/16OC23/WESTERN AUSTRALIA' (RO period) very fine strike on KGV 1 1/2d green. RO 12.7.1921; PO 1.9.1922; RO 27.7.1923; closed 28.012.1923. [18km north-west of Bridgetown]	100 ^T
-----	---	-------	---	------------------



Lot 822

822	S	A B2-	Trans-Australia Railway: 'TPO TRANS RAILWAY/-1OCT15/WESTN AUSTRALIA' almost fine strike on KGV 4d orange. PO 26.1.1915; closed 21.1.1918.	150 ^T
-----	---	-------	--	------------------



Lot 823

823	S	A A2	Yelam: 'YELAM/28FE24/WESTERN AUSTRALIA' superb strike on KGV 1 1/2d green. Not recorded in PMI. RO only 1.7.1922; renamed Glenoran 4.5.1926. [Group Settlement No10: 17km west of Manjimup]	250 ^T
-----	---	------	---	------------------

REST OF THE WORLD - GENERAL and MISCELLANEOUS LOTS

829	*/**	A	Australian Territories with Nauru Ships (*), Norfolk Ball Bay plus <i>White Papers</i> , PNG 1952 set plus 10/- & £1 'SPECIMEN' duo, 1960 (Mar) Postal Charges - no SG D1 - & 1964 Birds blocks of 4, unmounted, Cat £650+. (97)	250
867	O		Large mostly used accumulation in albums with some Revenues, perfins, postmark interest, noted Austria 10s Bird & Japan Pheasant 34y & 103y, France with imperfs including 80c Napoleon, GB from Penny Black (3 margins), New Zealand with Chalons x10 including 1/-, Switzerland Helvetia 1fr imperf, also some Australian Colonies, then quantity in envelopes & loose with lots of Asia. (1000s)	400
872	**/*		British Commonwealth in 40 albums & stockbooks some KGV & KGVI but strength in QEII to late 1990s with minor duplication, including long sets, M/Ss, booklets, self-adhesives & imperfs, noted 1948 Silver Wedding pairs x27, some Australia & GB plus worldwide with UN Flags sheetlets, lots of thematic interest in Flora & Fauna, Transport, Sport, Royalty, etc, the majority unmounted, enormous catalogue/face value. (1000s)	2,000
873	C		Worldwide First Day Covers accumulation with lots of thematic interest including extensive Canada range 1940s - modern, GB 1970s-90s, UN with Sterling Silver medals, Russia 1980 Olympics, Flora & Fauna of the World in 17 albums, 1977 Jubilee & 1978 Anniversary omnibus issues, WWF Nature in quantity, a few mint stamps also. (1000s)	300

Lot Type Grading Description

Est \$A

THEMATICS & SUBJECTS

892	**	A	Complete imperforate sheets of Birds, Fish, Butterflies, Flowers, Olympics etc from Cuba, Azerbaijan, Cambodia, Laos etc, some inscribed 'SAHARA OCC/RASD' (Western Sahara??), unmounted. (46 sheets + some blocks & untrimmed M/Ss)	400
-----	----	---	--	-----

FRENCH COMMUNITY

Ex Lot 1014

1014	O*Ω		GENERAL ISSUES: Duplicated range on leaves with used Eagles to 80c x3, Napoleon 1c x2 & 80c, Ceres 2c & 80c x3, Peace & Commerce Imperf 25c x2, 30c x5 including a pair, 35c & 75c x2, Commerce 5c block of 4, 30c strip of 5 & 75c x2, four pages of Postage Dues including 10c brown block of 4, condition rather mixed but many are fine to very fine, also some unused/mint stamps, Cat £4600+. (300+)	750
------	-----	--	--	-----

GERMANY - Occupied & Plebiscite Territories

Ex Lot 1046

1046	**	A/A-	SAAR: 1950 Council of Europe blocks of 4, the 200fr with a couple of minor blemishes, Cat €1000+. (2 blocks)	400
------	----	------	--	-----

JAPANESE OCCUPATION

Lot 1109

1109	**	B	BURMA: 1942 KGVI 1r purple & blue SG J18 block of 4 with with Peacock Device h/s applied at Myaungmya, minor aging, unmounted, Cat £1800+.	350 ^T
------	----	---	---	------------------

Lot Type Grading Description

Est \$A

NEW GUINEA - Mandated Territory Issues



Ex Lot 1155

1155	**O		1925-39 Issues complete including 'OS' Overprints, the 1935 Bulolo £2 (browned gum) & £5 are marginal & unmounted, about 99% mint, also a few imprint blocks, condition rather mixed. (150+)	750
------	-----	--	--	-----



Ex Lot 1157

1157	F/V	A/B	Undated Birds 2/- to £1, 1935 Bulolo £2 & £5, 1939 Bulolo 9d to £1, and a few low values, a few minor blemishes, Cat £1700+. (22)	750
1159	V	A	1932-34 Undated Birds 2d 3d 5d 6d & 2/- to £1, 1939 Bulolo 5d (vertical) & £1, all in horizontal pairs, Cat £760+. (20)	400

PAPUA - Postal History

1256	CL	B	AEROPHILATELY: 1935 (Sep 27) Port Moresby-Darwin AAMC #P90 with 2d Bird & 6d Air Mail manuscript cancelled "A11-1/Port Moresby/28-9-35/[signature]" overstruck with 'DARU/ 28SE35/PAPUA' cds, Darwin b/s of 27NO35, vertical fold & minor blemishes. An enigma. [The AAMC states <i>Hempel</i> departed Moresby 27/9/1935 but this cover suggests he left a day later. Why two months to reach Darwin?]	400
------	----	---	--	-----

PAPUA NEW GUINEA



Ex Lot 1259

1259	C**	A/A+	1947 (Jan 8) Rabaul-Sydney flight cover with the black & blue Qantas label & signed by the pilot "J Bonnington"; also plain typed cover Port Moresby-Rabaul AAMC #P165 with cds of "16JA47" & Rabaul arrival b/s of 17JA47, plus the similar Sydney-Rabaul label (pristine, unmounted). <i>Ex John McNabb</i> : sold at the <i>Prestige</i> auction of 12.10.2012 for \$862. [The entire Sydney-Rabaul mail disappeared. Unused vignettes are the only survivors of the flight to Port Moresby. The Port Moresby-Rabaul cover is the only recorded proving cover for the inwards flight. #P165 is not priced & this intermediate is not even listed] (3 items)	600
------	-----	------	--	-----