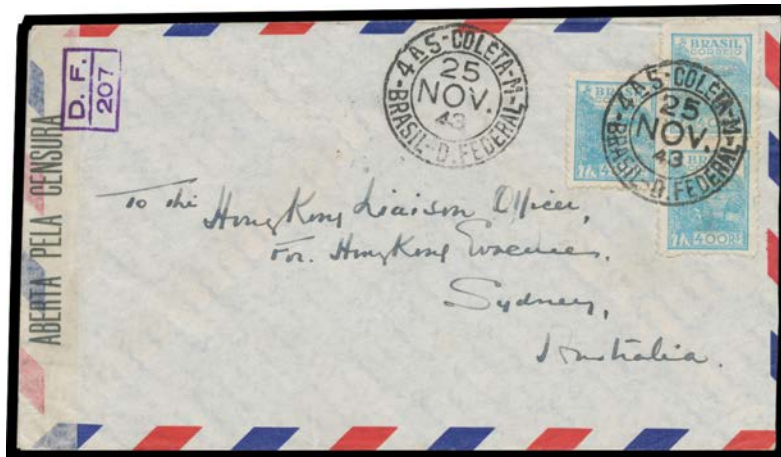


Lot Type Grading Description

Est \$A

**COMMONWEALTH OF AUSTRALIA - Postal History**

Ex Lot 313

313	C	A/B	1942 POW Envelope from a POW in Hong Kong to his wife "Hong Kong Evacuee/Hong Kong Liaison Officer/Sydney"; 1943 from Brazil endorsed ".../Toronto/Canada" on the flap to "Hong Kong Liaison Officer/For Hong Kong Evacuees/Sydney", non-contemporary note "Gripsholm" on the reverse; and 1943 surface & 1944 airmail covers to London to <i>Friends Committee for Refugees &amp; Aliens</i> or the <i>Jewish Refugees Committee</i> . (4)	550 <sup>T</sup>
-----	---	-----	---	------------------

**REST OF THE WORLD - GENERAL and MISCELLANEOUS LOTS**

849	***/O		Mint & used disorganised accumulation on Hagners but noted British Commonwealth with range of mint 1935 Jubilee & 1937 Coronation sets plus some used, Canada range including 50c Jubilee parcel cancel, Greece 1940 Aegean Islands overprints set *, Malta group with QEII 1956 Pictorials set *, NZ on leaves with some modern mint, Solomons QEII sets to £1 *, then albums & box of stockcards with more, condition mixed but many fine. (1000s)	400
852	***/O/C		A-Z mostly used with China including 1960 Great Hall pair, Gold Fish set, 1961 Tang Pottery set (mint), 1964 Peonies set, modern mint from Canada, GB, NZ, etc including M/Ss and thematic interest, plus loose in envelopes & a few covers. (1000s)	300
853	***/O/C		Five cartons of albums, stockbooks & loose stamps mostly used noted larger ranges of Australia, Canada with 1994 & 1995 Yearbooks, Ceylon, GB, NZ, USA including some modern mint plus lots of Asia & Europe, France 1970s-80s, also thematic interest. (1000s)	400



Ex Lot 856

856	***/O		Two cartons of British Commonwealth up to 1980s mostly KGVI & QEII mixed **/ with many complete sets including Pacific Islands, South Atlantic & BAT, also some earlier singles & part-sets noted Burma KGV 'SERVICE' overprints on India set to 5r *, Gambia QV Cameos to 1/- *, Newfoundland Caribou set *, Papua Lakatois range, GB QEII unmounted with <i>Machins</i> range mint & used, lots of thematic interest. (1000s)	750
860	***/O		British Empire in <i>Gibbons</i> KGVI album with pickings including mint Australia Robes, Burma 1946 Pictorials & 1947 Interim 'SERVICE' overprints, Sudan 1950 Airs & 1951 Pictorials, Newfoundland 1937 Coronation long set (**) plus Canada, India, Ireland, New Zealand, Pacific Islands, etc. (Qty)	300
873	C		Worldwide First Day Covers accumulation with lots of thematic interest including extensive Canada range 1940s - modern, GB 1970s-90s, UN with Sterling Silver medals, Russia 1980 Olympics, Flora & Fauna of the World in 17 albums, 1977 Jubilee & 1978 Anniversary omnibus issues, WWF Nature in quantity, a few mint stamps also. (1000s)	300

Lot	Type	Grading	Description	Est \$A
-----	------	---------	-------------	---------

**PHILATELIC LITERATURE**

901	L	A/A-	<b>Large carton</b> with <i>Gibbons</i> "Stamps of the World" in 6 volumes (2013), "NZ" (2014), "Western Pacific" (2014), "Benelux" (2010), "France" (2015) & "Germany" (2012), generally very fine, also <i>Unitrade</i> "Canada Specialised" (2010) with label on the face. <b>(12)</b>	100
-----	---	------	---	-----

**WORLD PICTURE POSTCARDS**

916	C	A	<b>Artist topographicals</b> by <i>Walker of Liverpool</i> for Tasmania x14, Victoria x6, NSW x7, New Zealand x10, South Africa x26, Canada x12, West Indies x5, Britain x26 & a few others, condition variable but many are fine to very fine used or unused. An excellent foundation for a visually stimulating study. <b>(116)</b>	250
934	C		<b>Europe range</b> with UK 1924 Empire Exhibition x10, France, Jerusalem group x15, Egypt Cairo & Alexandria wallets, <b>Canada</b> Niagara Falls Aerial Cableway & Steamers, <b>USA</b> Washington DC x22, San Francisco miniatures x20, <b>Victoria</b> "Mount Eliza from William Street Jetty" (published by <i>Bon Marché Stores</i> , Perth!) plus Trade Cards <i>Stamina Trousers</i> "Men of Stamina" two sets in original envelopes, mostly unused, mixed condition. <b>(100+)</b>	100

**CANADA**

Ex Lot 966

<b>966</b>	*ΩO		<b>Gibbons album</b> mostly used with Colony 1c & 12½c, Large Queens to 15c x2, Jubilee 10c & 20c plus unused 6c 8c 15c & \$5 and 'SPECIMEN' h/s on 50c (set of 7 Cat £2500), Maple Leaves both sets, 'WAR/TAX' Overprints unused, thereafter apparently complete to 1983, "Back of Book" issues also complete (the Registered 8c is unused) but no Official perfins, condition variable. <b>(100s)</b>	1,000
967	**/*OB		<b>1900s-2008</b> collection with sparse earlies mostly used, mint from 1960-80 then apparently complete ** including M/Ss, sheetlets, booklets, etc on <i>Schaubek</i> pages (empty 2009-16 pages also) & loose, lots of thematic interest & substantial face value. <b>(1000s)</b>	500
968	**	A	<b>Complete sheets accumulation</b> from 1970s to 2010+ including some sheetlets, panes & minisheets, some duplication, values to \$10, high thematic content, face value C\$7500+. <b>(1000s)</b>	2,500
969	*/O/CPS		<b>1930-31 Arch &amp; Maple Leaf</b> predominantly used study on pages including 8c blue x13, 50c x28 & \$1 x14 plus usages on cover including <i>Canadian Pacific</i> x2 with 'CPR' perfins, flight covers & uprated stationery, condition generally fine, STC C\$1250+. <b>(100s + 12 covers)</b>	200

**PAKISTAN**

1226	C	A/B	<b>1948 OHMS</b> cover with KGVI 1½a 'SERVICE' with violet ' <b>PAKISTAN</b> ' h/s, another similarly franked but with '(P)AKISTAN' black diagonal h/s, also 2½a 'SERVICE' with 'PAKISTAN' overprint used with Pakistan 6p 'SERVICE' overprint on registered OHMS cover, 1956 registered air to Australia with 2r, inwards airmails from Ceylon & Canada.	150
------	---	-----	---	-----