

Lot	Type	Grading	Description	Est \$A
-----	------	---------	-------------	---------

COMMONWEALTH OF AUSTRALIA - General & Miscellaneous Lots

17	**OC		Two cartons of consignment remainders mostly from Australia including a stack of 1950s-70s FDCs many with blocks of 4 & 1971 Christmas blocks of 6 !! x3, some mint including Robes 5/- <i>Tinted Paper</i> blocks of 4 x2 & Newcastle 2½d half-sheet punctured 'VG', used quantity sorted in envelopes, array of Postage Dues, large bag of covers including some earlier meters, also a quantity of inwards mail from all over the world; etc. (1000s)	200
31	*OC		Accumulation mostly used from Kangaroos noted 5d Large 'OS' and Third Wmk 5/-, KGV some mint including 'G/NSW' and 'VG' punctures, Commems with a few mint also, then huge quantity of Decimals used plus some FDCs, condition mixed but mostly fine.	400



Ex Lot 44

44	P*/C		TERRITORIES: Photographic Essays by Peter Morriss including PNG 1965 United Nations composite piece with 5d value (similar to issued 6d) and three different 2/3d values side-by-side (two of which are similar to the issued 1/- & 2/- values; the other an unadopted design) and Nauru 1965 Pictorials 3/3d Bird similar to issued stamp but with different inscription format, also PNG, Nauru and Christmas Island 1950s-60s FDCs autographed <i>PE Morriss</i> and issued stamps mounted on pages signed by him, fine condition. [see also Lots 188 954 and 1224] (90+)	400
----	------	--	--	-----

COMMONWEALTH OF AUSTRALIA - Other Pre-Decimals



Ex Lot 187

187	P*/C	A/A-	ESSAYS: Original artwork by <i>Donald Cameron</i> for QEII definitive issues including Queen's head in ink & china white (166x121mm) dated "DJC '54" and autographed similar to 1957 7½d violet (die engraved by him in late 1954), another in ink & china white (166x74mm) autographed and endorsed "sublimation" similar to 1959 3d green, also pen & ink drawing (210x126mm) of child for 1957 Christmas issue, plus some matching stamps, FDCs and Christmas cards signed by him. (63 items)	400
-----	------	------	--	-----

Lot Type Grading Description Est \$A

COMMONWEALTH OF AUSTRALIA - Decimal Issues

213	**/*O/C	A	Large mint accumulation with booklets, packs, gutter strips, complete sheets, etc, PSEs (mint & FDI) & FDCs in quantity, plus Yearbooks 1981-94 x2 each, 1996 x2 and extra 1987 & 1992, substantial face value. (Qty)	1,000
215	**/C	A	Yearbooks 1981-92 plus batch of 1960s-80s FDCs.	150
225	**/CPS	A	Accumulation of 1970s-80s stamp packs, FDCs and PSEs, a few more modern also, substantial face value, fine condition. (100s)	400

COMMONWEALTH OF AUSTRALIA - First Day Covers



Lot 261

261	C	A	1923 KGV 1½d green tied to plain cover by superb 'PARKVILLE/7MR23/VIC.' cds being the official First Day of Issue ACSC #88y, unsealed & unaddressed, Cat \$10,000. [The ACSC states "Only one first day cover can be traced". This was <i>Arthur Gray's</i> registered cover - a few blemishes - dated 6MR23 (!) which was sold at the <i>Mossgreen</i> auction of 30.10.2015 for \$4370]	4,000
------------	---	---	--	-------



Ex Lot 262

262	C		1927-50 collection including Canberra 1½d, Kooka 3d with red Exhibition cds, Airmail 3d, Swan 1½d, Sturt pair, Kingsford Smith set on very fine illustrated <i>Mitchell</i> cover, Kooka 6d on registered generic <i>Mitchell</i> cover, 1934 Hermes 1/6d on airmail cover to UK, Macarthur set tied by 'NEDLANDS/WA' cds on registered cover, Silver Jubilee set, illustrated covers with ANZAC pair, Cable pair & SA Centenary set, 1938 Platypus 9d on attractive multi-coloured hand-illustrated cover, Queen Mother 1d brown strip of 3 and 1½d pair, then variety of privately-cacheted covers plus a few OHMS types, also a few non-FDI covers, condition variable but many fine. [The illustration is above Lot 263] (69)	800
------------	---	--	---	-----

COMMONWEALTH OF AUSTRALIA - First Day Covers (continued)

Lot Type Grading Description

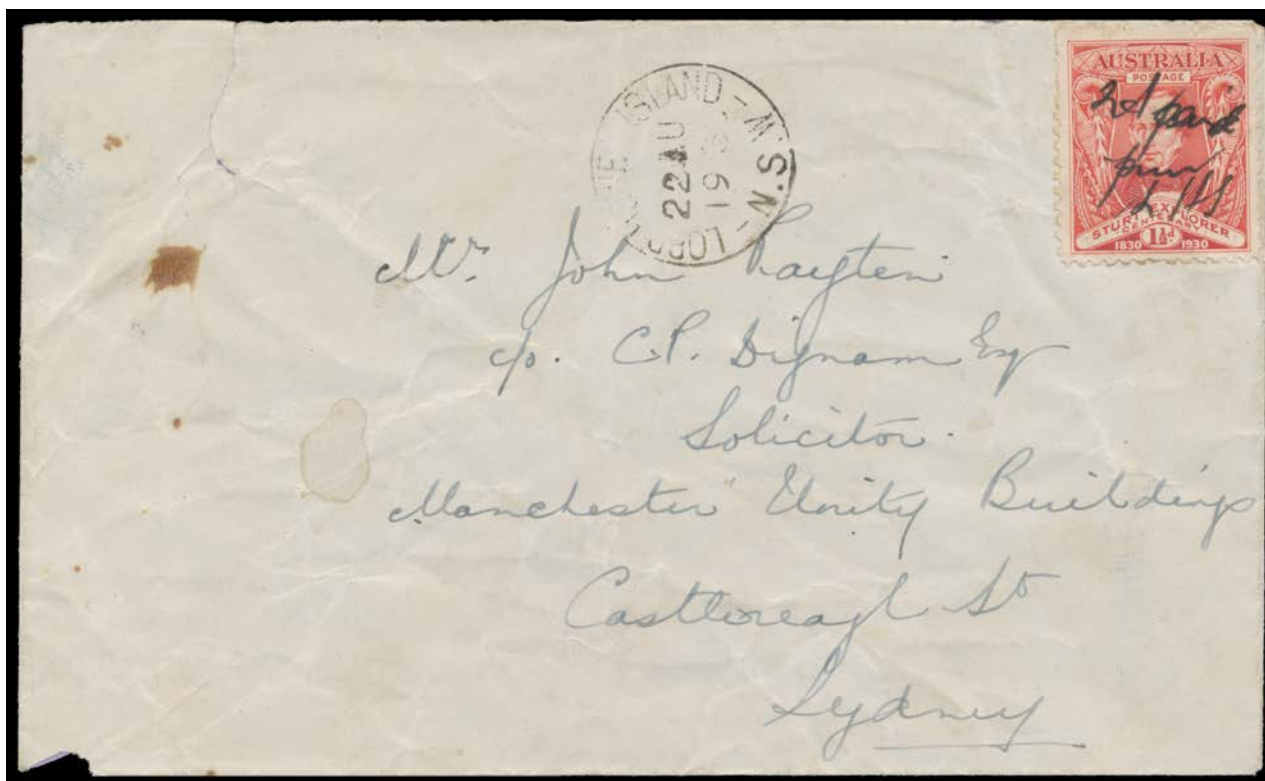
Est \$A



Lot 263

263 C A **1928 International Exhibition Kookaburra M/S** on plain cover - Exhibition advertising in blue on the flap - by the Exhibition cds of 29OC28 in red with another strike alongside, unaddressed & the flap unsealed so it can be opened-out for display, Cat \$1500.

600



Lot 264

264 C C/A **1930 Lord Howe Island Provisional** Sturt 1½d endorsed in manuscript "2d paid/PM/LHI" uncanceled on commercial cover to a Sydney solicitor with 'LORD HOWE_ ISLAND/22AU/1930/NSW' cds alongside, a few faults but presentable & the stamp is very fine, Cat \$3250 (for usage on 22 or 23.8.1930). From the first despatch of provisionals from the island, with the earliest recorded date of 22.8.1930, making this a rare & generally unrecognised First Day Cover. [Most later covers were organised by collectors & invariably have the cds tying the stamp to the envelope]

2,400^T

COMMONWEALTH OF AUSTRALIA - First Day Covers (continued)

Lot Type Grading Description Est \$A



Ex Lot 265

265	C		<p>1931-65 collection in high-quality <i>Ka-Be</i> pages & album with a variety of cachet-makers noted 1931 Kingsford Smith set on <i>Mitchell</i> cover, 1934 Macarthur set, 1935 ANZAC pair with 2d <i>Plate Number</i> single, 1936 SA Centenary on HMS "Buffalo" cover, 1953 Produce Food strips on one cover, 1956 Olympics with 'STATION PIER' cds (not FDI), 1962 Empire Games with 'VILLAGE-PERTH' cds & R label, Navigators on six covers, the majority unaddressed, mixed condition but many fine. (121)</p>	600
-----	---	--	---	-----



Lot 266

266	C	B	<p>1931 Airmail 6d sepia tied by 'GPO MELBOURNE/4NO31/2' cds ACSC #144y on <i>Blogg Brothers</i> registered airmail cover to Perth with Kingsford Smith 2d alongside, a couple of minor aging marks, Cat \$700. [The rate was 2d letter rate + 3d airmail surcharge per 1/2oz x2 = 8d]</p>	400
267	C	A	<p>1932 Large Lyrebird 1/- green tied to <i>Doodlakine Farmers Co-Operative Company Ltd</i> cover by 'DOODLAKINE/15FEB32/WESTERN AUSTRALIA' cds (damaged frame) ACSC #145y, Cat \$375.</p>	200



Ex Lot 268

268	C	B-	<p>1932 Sydney Harbour Bridge 2d 3d & 5/- tied to plain cover by 'BUNBURY/14MR32/WESTERN AUSTRALIA' cds ACSC #148y, plus two covers with 2d & 3d only to the same address, all with some toning/aging that can probably be professionally improved, Cat \$5000. (3 covers)</p>	1,000
269	C	A	<p>1934 Victorian Centenary Perf 10 1/2 2d 3d & 1/- tied to <i>Eustis</i> cover by 'REGISTERED/2JY34/ADELAIDE SA' cds ACSC #153y registered Adelaide to Alberton & endorsed "Special Delivery" with 'EXPRESS' cachet, Cat \$750.</p>	400

COMMONWEALTH OF AUSTRALIA - First Day Covers (continued)

Lot Type Grading Description

Est \$A

**Lot 270**

270 C A **1937-49 KGVI Definitives** Perf 13½x14 3d blue *Die II Thin Paper* tied to plain cover by 'GPO MELBOURNE/ 3 / 21DE38/VIC-AUST' cds ACSC #192y, Cat \$1250. [The ACSC states that the issue date was 20th December, but *Frank Pauer* has confirmed that is an error]

600

**Ex Lot 271**

271 C/CL A **1937-73 collection of generic APO covers** in five large albums from 1937 NSW Sesqui virtually complete to 1971 - no Robes or Arms, & the £2 Navigator is a private cover - including Navigators to £1, 5d green *Imperf at Sides & Imperf Between Pair*, 4c booklet pane & 30c Cook (rare on small envelope), with numerous extras including many blocks of 4 to higher values, long envelopes (many of which are very scarce) including with booklet panes of 1968 Famous Australians & 1969 PMs, 1968 Soil-Medical gutter block of 4 & 1969 Flight block of 9, etc, a very few are non-official types, virtually all unaddressed & generally very fine. **(450+)**

2,000

**Lot 272**

272 C A- **1938-49 Robes** *Thick Paper* 5/- & 10/- tied to plain cover by 'REGISTERED/1AP38/SYDNEY NSW' cds ACSC #212y/214y to Scotland, a couple of minor blemishes, Cat \$450 (for the 5/-) & \$750 for the 10/- but no price given for the two values on the one cover.

400

COMMONWEALTH OF AUSTRALIA - First Day Covers (continued)

Lot Type Grading Description

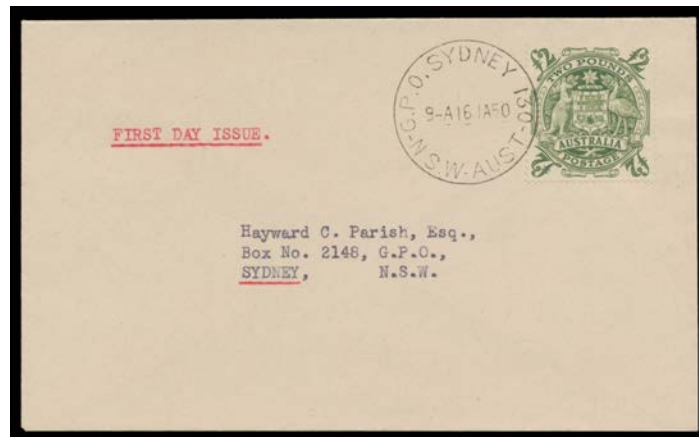
Est \$A



Lot 273

273 C A- - Thick Paper £1 dull blue tied to generic KGVI FDC by 'WOLLONGONG/1NO38/NSW' cds ACSC #216y, registered express to Jamberoo (arrival b/s), a couple of minor blemishes, Cat \$3500. A rare cover.

2,000



Ex Lot 274

274 C A- **1949-56 Arms** 5/- & 10/- (registered) on illustrated covers, £1 & £2 on plain registered covers, cds of 11AP49, 30C49, 28NO49 & 16JA50 respectively, a couple of minor blemishes but the £2 is very fine, Cat \$2750. **(4 covers)** 1,200

275 C\$ A **1966-2013 collection** in high-quality *Ka-Be* pages & albums noted 1968 Soil/Medical gutter pair unaddressed, 1970 official AP covers for Expo & Royal Visit addressed plus Grasslands unaddressed, also **AAT** 1958-2009 including Base cancels etc, plus 60+ PNCs including 2000 ANZACs, Victoria Cross, Olympics pair, 2001 Army, 2002 QEII Accession & Coronation, 2004 Eureka, 2007 Ashes Victory, etc. 600

276 C A **2010 Melbourne Cup** 150th Anniversary 60c gold stamp on limited edition "046/500" Prestige FDC in wooden presentation box. 150

COMMONWEALTH OF AUSTRALIA - First Day Covers (continued)

Lot Type Grading Description

Est \$A



Lot 277

- | | | | | |
|-----|---|---|--|-----|
| 277 | C | A | <p>2016 Adelaide Emergency Printing 30c Type B ('2016' printed 7mm from edge of stamp) set of 6 tied to a plain unaddressed cover by 'SALISBURY/ 1 /8JAN2016/SA 5108' cds. [In January 2016, the base letter rate was raised from 70c to \$1. A shortage of 30c values in Adelaide resulted in an emergency printing using an old <i>Monarch</i> counter-printing machine & remainder stock of 1994 self-adhesives. These were distributed only to the GPO & some suburban post offices in Adelaide & were on issue for only a few days, pending arrival of regular 30c issues from <i>Stores Branch</i>. No publicity for or notification of the issue was given & no examples were provided to the <i>Philatelic Bureau</i> or otherwise for distribution to New Issue Service clients. Usage on commercial piece has been recorded from 6JAN2016 but no covers from either the 6th or 7th. Collectors became aware of the issue on 8.1.2016 on which date a mere 16 "FDCs" were processed]</p> | 750 |
|-----|---|---|--|-----|



Ex Lot 278

- | | | | | |
|-----|-----|---|--|-----|
| 278 | C | A | <p>AUTOGRAPHED FIRST DAY COVERS: 1960s Pre-Decimals on <i>APO Hermes</i>, <i>Royal</i> & <i>WCS</i> covers autographed by the relevant stamp engravers "PE Morriss" or "Bruce Stewart" including 1964 Airmail pair also signed by artist "Kevin McKay", plus 1969 Flight Anniversary x2 signed "HN Wrigley" who flew to Darwin in early-1920 to meet Ross & Keith Smith, many unaddressed. (66)</p> | 300 |
| 279 | C/? | A | <p>- Stamp Designers & Engravers large accumulation of mostly 1940s-60s covers signed <i>Donald Cameron</i> or <i>Peter Morris</i> with some scarcer cachets and 1935 Silver Jubilee registered FDC (not signed), also blocks of stamps autographed in selvage, bibliographies, photos and other designs including Christmas cards, plus a quantity of Decimal covers signed <i>Robert Ingsen</i>, <i>Ray Honniset</i>, <i>Celia Rosser</i>, etc; also two original framed artworks by <i>Donald Cameron</i>, pen & ink drawing by <i>Frank Manley</i> and one other. (100s)</p> | 400 |
| 280 | CPS | A | <p>- Famous Australians accumulation including Gough Whitlam, Mark Oliphant, John M Young on 1948 Yarra Brae/Wonga Park Jamboree covers x4 plus two self-addressed covers from Frank Manley (designer) and his son Owen (model for the stamp), Lawrence Hargrave (with \$20 notes x3), PG Law (Antarctic explorer), Archbishop Frank Little on 1971 Christmas block cover, Zelman Cowan, William Dargie, Nancy Bird Walton, Little Pattie & Normie Rowe, Tommy Hanlon Jr, Lindsay Fox, Bruce Ruxton, Dacre Smyth, etc, on variety of covers up to 2000s all set out on display pages, includes some PSEs. (100s)</p> | 300 |
| 281 | CPS | A | <p>- Sporting Champions accumulation including Ron Clarke, Herb Elliott & Roger Bannister on 1956 Olympics covers, Ron Barassi, Tom Hafey, Bobby Skilton, Alex Jesaulenko and Tim Watson together on large cards with 1989 Sports series stamps x5, plus Barassi & Hafey on other covers, then John Newcombe, Kirsty Marshall, Tony Charlton, Peter Brock, also Don Bradman x4 plus original sketch, Ian Johnson (Australian Cricket Captain) and group of Indian players from 1985 World Cup including Kapil Dev & Sunil Gavaskar, etc, on variety of covers up to 2000s, includes some PSEs, all set out on display pages. (100+)</p> | 300 |

COMMONWEALTH OF AUSTRALIA - First Day Covers (continued)

Lot	Type	Grading	Description	Est \$A
282	CPS	A	- Military Personalities accumulation including Victoria Cross recipients Sir Roden Cutler, W/O Keith Payne, Sgt RR Rattey, Cpl Jim Gordon, Pte Edward Kenna, Jack Daniel Hinton (NZ), Charles Upham, also, Admiral Sir VAT Smith, Rear-Admiral William Dovers, Air Marshall James Rowland, Group Captain Eric Black, BP "Bob" Butler (AFC), JC Hughes, Jim Doolittle, Nancy Wake, Bruce Ruxton, etc, on variety of covers up to 2000s, includes some PSEs, all set out on display pages. (100s)	300

COMMONWEALTH OF AUSTRALIA - Postal History

292	CPS		Array of mostly 1930s commercial airmail covers plus some WWII Comfort Funds stationery (very fine unused), a few advertising items & souvenir flights, £1 Arms First Day Cover, 1960s 'The Cupid/WEDDING CAKE BOX' with the original tin (but no cake!; the only example of this remarkable item we have seen), etc, very mixed condition but those itemised are presentable.	400
299	CPS		Group including 1915 Sydney postcard wallet with KGV 1d red x2, 1923 to UK with KGV 2d and boxed 'DAMAGED BY IMMERSION/IN SEA WATER IS' h/s, 1925 registered with large red 'DARWIN' label, 1938 with 'GEELONG CENTENARY' cinderella, 1941 POW postcard airmail to England, STO envelopes for <i>Brooke's Coffee</i> (illustrated) and <i>Australian Glass</i> , also batch of Pre-Decimal FDCs and commemorative covers with range of cachets, etc, condition generally fine. (100+)	300 ^T

NEW SOUTH WALES

Lot 395

395	F	A+/B	1856-60 Imperforate Small Diadems Lithographic Transfer 2d pale blue SG 118 horizontal pair, margins just shaved - at right - to large, the first unit a superb stamp with full margins, very fine strike of the ' E / AU3/1859/ SYDNEY - NSW' (sideways) duplex, Cat £1600++. A rare pair, remarkably cancelled on the First Day of Issue . Ex <i>Guy Hutson</i> (unrecognised in a mixed lot). <i>RPSofV Certificate</i> (2015).	1,000 ^T
-----	---	------	--	--------------------

REST OF THE WORLD - GENERAL and MISCELLANEOUS LOTS

840	**OC		Collection remainders in albums & on leaves including a stockbook of PNG duplicates including High Values, lots of British Commonwealth pickings, basic collections of Belgium Italy & Vatican, Japan mostly mint selection including 1952 Airs 55y to 160y (Cat £425) plus some used earlies, etc, condition variable, also Brunei 1947 Definitives x5 sets & 1952 Definitives x8 sets all on plain FDCs. (many 100s)	500
870	CPS		Carton of non-Australian covers etc including a bundle of 1960s-1970s unaddressed FDCs from Greece, some PPCs, and a quantity of Postal Cards from numerous countries including surcharged Polish types, 120+ unused & used South African scenic issues, etc, condition variable but generally good to very fine. (1000+)	400
877	**OBC		World accumulation including GB "Penny Black" x6, British & French Antarctic Territories, lots set out on <i>Hagner</i> pages including booklets, M/Ss and self-adhesives, others loose in bags, FDCs for <i>World Wildlife Fund</i> , WIPA 1981 etc in albums, lots of thematic interest, condition mixed but mostly fine. (1000s)	400
882	C/CL		1937 Coronation collection of mostly First Day Covers including some illustrated types, many registered & some postmark interest, noted Newfoundland Long Set x2, Malta commercial to Australia, Straits commercial air to NZ, Turks commercial censored to Bahamas, Nigeria used in Cameroons, etc, generally fine to very fine. (250+)	300

THEMATICS & SUBJECTS

896	**CPS	A/A-	SCOUTING: Worldwide mostly post-WWII stamps & covers etc in ten albums, pickings including 1936 SA Centenary Corroboree registered cover, meter cancels including illustrated types, lots of M/Ss. (Qty)	200
-----	-------	------	--	-----

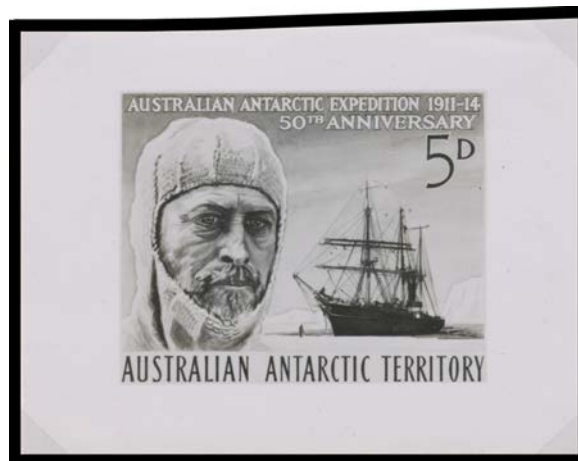
ANTARCTICA

953	**C	A	AUSTRALIAN: Basic collection to 2008 plus an array of mostly unaddressed FDCs & commemorative covers.	150
-----	-----	---	--	-----

ANTARCTICA (continued)

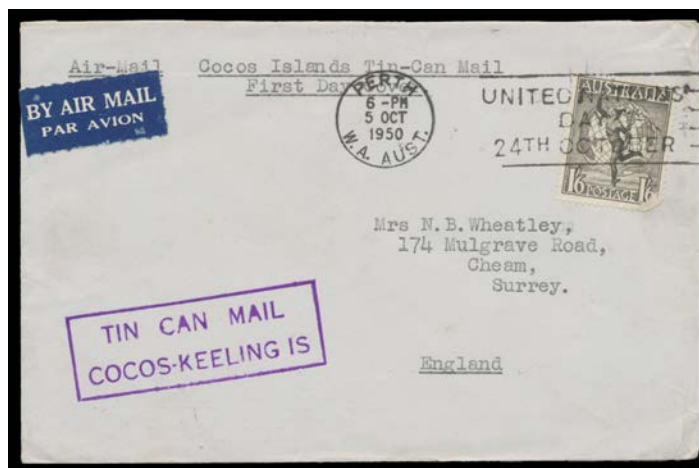
Lot Type Grading Description

Est \$A

**Ex Lot 954**

954 E/C A - 1961 Mawson photographic essay by *Donald Cameron* of unadopted design showing portrait of Mawson (similar to the issued stamp) alongside the "Aurora" in the Antarctic, also FDC of the issued stamp autographed by "Donald Cameron" and "PG Law" (ANARE leader). (2 items)

100

COCOS ISLANDS - Postal History**Ex Lot 988**

988 C B/A 1950 cover to England with "LJ Wheatley/Cocos Islands/co Cable & Wireless Ltd/Singapore" return address and superb strike of *Leigh-Parkin's* boxed 'TIN CAN MAIL/COCOS-KEELING IS' h/s in violet alongside Australia 1/6d Hermes (fault) applied for airmail & cancelled with Perth '5 OCT' slogan, endorsed "First Day Cover" for the cachet's introduction, plus *real photo* PPC of tiny yachts collecting Tin Can Mail from the passing P&O "Orion" off Cocos Islands. (2)

400^T**GREAT BRITAIN**

1076 C A **JERSEY:** 1980s-90s First Day Covers many autographed notably WWII-related issues signed by Admiral Sir VAT Smith (Australian representative for D-Day planning), others by Peter Layton (stamp designer) and Dr PG Law (Antarctic expeditions leader), some publicity cards, also group of 'Transglobe Expedition' covers signed by Ranulf Fiennes, lots of thematic interest, all set out on display pages, fine condition. (100+)

200

Lot Type Grading Description

Est \$A

GREAT BRITAIN - Postal History**Ex Lot 1080**

1080 PS A/A- **POSTAL STATIONERY:** Postal cards selection on display pages including 1870 ½d usage on **First Day of Issue**, 1882 *De La Rue* 'INLAND REVENUE/CERTIFYING STAMP' handpainted essay, postal markings including 1871 "clipped" at Manchester, 1873 arrowhead perfin at Liverpool, etc, generally fine to very fine. **(20)**

500^T**NAURU**

1135 C A **1916** correctly rated & apparently commercial cover to NSW with Overprints ½d 1d & 2½d tied by three light but discernible strikes of the 'PO PLEASANT ISLAND/OC7/16/(NAURU), manuscript "Registered/Nauru No 1193" in red, Sydney '8NO16' arrival b/s. **Believed to be the earliest recorded Overprints cover from Nauru.** [Despite the date of issue being 2.9.1916, *Keith Buckingham* at page 7 states "...the earliest recorded overprint cover...is dated 7 October 1916..."]

300

NEW GUINEA - 'G.R.I.' Overprints**Lot 1150**

1150 F A A1 **1914-15 6mm Setting** '1d.' on 3pf brown SG 1, well centred, 'RABAU/ Oct 17 1914' d/s in violet being the First Day of Issue, Cat £850. A rare and very desirable "Number One".

600

NEW GUINEA - Mandated Territory Issues

1161 C B/C **1939 Bulolo Airmails** First Day Covers with all values to 9d on five plain covers with Rabaul cds of 1MAR39, some toning/soiling. [Most "FDCs" are from later releases at outlying post offices]

150

Lot Type Grading Description

Est \$A

NORFOLK ISLAND**Ex Lot 1224****1224** P/*/C

ESSAYS: Photographic Essays by Peter Morriss of unadopted designs including 1960 Pictorials with QEII 1d & 2d values (and issued 1d, 2d, 5d & 9d values all with sloping "N" not used in final versions), others in issued but unfinished states, 1960 Local Government unfinished and 1964 Anniversary with issued & unadopted design side-by-side, also 1950s-70s FDCs autographed *PE Morriss* and issued stamps mounted on pages signed by him, fine condition. **(64 items)**

600