

Lot	Type	Grading	Description	Est \$A
-----	------	---------	-------------	---------

COMMONWEALTH OF AUSTRALIA - General & Miscellaneous Lots

10	**/*O		Large accumulation with a few Roos & KGV Heads then extensive Pre-Decimals including imprint & plate number blocks, 'OS' overprints & punctures, noted 1/- ANZAC ** & used block of 5, Arms set ** & used in blocks of 4 plus 10/- 'SPECIMEN', Navigators ** & used, a few Decimals including 1971 Christmas block of 25, also Colonies range from imperfs with values to £1, potential postmark interest, condition mixed but many fine. (1000s)	500
14	**/*OC		Accumulation in two cartons noted some plate & imprint blocks, Northern Territory Stamp Duty 1c pane of 50 with <i>Authority Imprint</i> , then Decimals ** with a few M/Ss, booklets & packs, plus some FDCs. (Qty)	250
24	**/*		Collection of blocks of 4 including Kangaroos 3rd Wmk 1/- <i>Harrison Imprint with Break in Tasmanian Coast</i> , CofA Wmk 9d <i>Ash Imprint (Second State)</i> , KGV Heads Single Wmk 4d orange, 4d violet & 4½d, SM Wmk 2d brown punctured 'OS', CofA Wmk 5d <i>Ash Imprint</i> , 1931 Kingsford Smith & 1936 SA Centenary sets of imprints, Decimals with some booklet panes & 1971 Christmas block of 25, etc, many fine but some aging/toning on earlies so careful inspection recommended. (100s)	800

COMMONWEALTH OF AUSTRALIA - Kangaroo Issues



Ex Lot 52

52	O		Used accumulation with First Wmk 6d blue apparent kiss print showing doubling of '6d', Third Wmk 6d blue 'CA' monogram single on piece with Melbourne cds (faults), CofA 10/- and £2 with small corner cds, then quantity including 2d x150+, 3d x250+ (unchecked for dies), 6d blue x400+, 6d brown x100+, 9d x100+, 1/- x300+, 2/- brown x50+, 5/- x 24 etc noted some blocks of 4 and larger, a few annotated flaws & inverted wmk, plus considerable postmark interest, condition variable but many fine. (1000+)	1,000 ^T
----	---	--	---	--------------------

COMMONWEALTH OF AUSTRALIA - Kangaroos - Third Watermark



Lot 85

85	F	B/C A1	6d ultramarine Die II monogram pair the left-hand unit with Plate 2 'CA' monogram ACSC #19(2)ze (substituted for 'JBC'; shaved marginal line) and minor creasing, the right-hand unit with a few faults, fine 'MELBOURNE/ 22 /7JL19/VICTORIA' cds, extremely rare intact commercially used example, Cat \$4000 for mounted mint single.	1,000 ^T
----	---	--------	---	--------------------

COMMONWEALTH OF AUSTRALIA - Kangaroos - Third Watermark (continued)

Lot Type Grading Description

Est \$A

**Lot 90**

90 */** A B1 1/- blue-green with the *Watermark Sideways AJ Mullett Imprint* block of 8 with *Sprouting NW Cape of Tasmania* ACSC #33aa(3)zb, better than average centring, upper units very lightly mounted, lower units unmounted, Cat \$2550++ (mounted).

1,800

**Lot 109**

109 ** A C1 **PUNCTURED 'OS'**: 2d grey Plate 1 'CA' *Monogram* single BW #7ba(1)zb, unmounted, Cat \$1800 (mounted). [The ACSC states "Prices for varieties with OS puncture are twice the price of unpunctured stamps"]

1,200^T**COMMONWEALTH OF AUSTRALIA - Kangaroos - CofA Watermark****Lot 121**

121 ** A C1 5/- grey & yellow-orange, marginal with part-imprint, unmounted, Cat \$1500.

450

Lot Type Grading Description

Est \$A

COMMONWEALTH OF AUSTRALIA - King George V Issues



Ex Lot 130

130	**/*	<p>Mint accumulation with values to 5d noted ½d pale green block of 22, 1d red inverted wmk block of 4, some imprints including Small Multi Wmk 2d brown Plate 1 & Plate 2 imprint blocks of 4 and 2d red imprint block of 6 with double perforations in margin, a few 'OS' and 'OS/NSW' punctures, condition variable but many fine. (350+)</p>	500 ^T
142	*O	<p>THREE HALFPENCE: the second volume with numerous plated varieties including Red <i>Void Corner</i> x9 & <i>Corrections</i> x3 all used, strength in the imprint blocks including Single Wmk Black-Brown <i>Harrison</i> block of 8 (very fragile), Green <i>Harrison</i> pair, LMult Wmk Brown <i>Harrison</i> block of 4, No Wmk Red <i>Harrison</i> block of 4, SMult Wmk Perf 14 Red Plate 1a <i>Plate Dot</i> pair, <i>Harrison</i> block & <i>Mullett</i> block of 8 with <i>Void Corner</i>, Perf 13½x12½ Red <i>Mullett</i> block of 8 with <i>Void Corner</i>, etc, also CofA Brown CTO block of 6, a few problems but generally very fine, Cat \$11,000+. (100s)</p>	2,500 ^T

COMMONWEALTH OF AUSTRALIA - KGV Heads - Single Watermark



Lot 150

150	*	B B1	Smooth Paper 1d scarlet-red with the Watermark Inverted 'CA' Monogram corner strip of 3 ACSC #71a(3)zb, well centred, minor faults & some reinforced perfs, Cat \$1250 plus a significant premium for the watermark being inverted. <i>Scott Starling Certificate</i> (2017) states "a very rare combination".	500
------------	---	------	--	-----



Lot 152

152	**	A	1 1/2d green Electro 16 <i>TS Harrison Imprint</i> block of 4 ACSC #88(16)z, unmounted, Cat \$1500+ (mounted).	1,000 ^T
153	**	A C1	1 1/2d scarlet Electro 22 <i>No Imprint</i> block of 21 (7x3) ACSC #89(22)za on annotated page identifying varieties on twelve units, most units including the No Imprint block of 4 are unmounted, Cat \$650++ (mounted).	250 ^T

COMMONWEALTH OF AUSTRALIA - KGV Heads - Single Watermark (continued)

Lot Type Grading Description

Est \$A



Lot 156

156 ** B C1 4d orange monogram block of 6 with Plate 1 'CA' monogram and adjoining unit with 'White Flaw Behind Emu's Leg' ACSC #110(1)zb, unmounted (hinge remain in margin only), some minor gum toning but still very attractive, Cat \$1500 for mounted mint corner pair only.

400^T

COMMONWEALTH OF AUSTRALIA - KGV Heads - Large Multiple Watermark



Lot 160

160 ** A B1 Cooke Printings Plate 3 1d carmine-pink 'CA' Monogram block of 12 (4x3) ACSC #73A(3)z, the left-hand unit in the second row with Small White Scratch behind Roo, minor perf reinforcement in the lower margin otherwise unmounted, Cat \$12,500 for a mounted monogram strip of 3 + \$11,250 for nine unmounted singles. Outstanding rarity in this format. Scott Starling Certificate (2017) states "A fine and fresh example of a very rare block".

10,000

Lot Type Grading Description

Est \$A

COMMONWEALTH OF AUSTRALIA - KGV Heads - Small Multiple Watermark Perf 14

162	*	A	1½d red Plate 1a <i>Plate Dot</i> and <i>AJ Mullett Imprint</i> pairs ACSC #91(1a)z & za, lightly mounted, Cat \$2750 as blocks of 4. [The identifiers for Plate 1a are distinctive: the plate dot is 50% larger than on Plate 1 and on the imprint the first 'A' of 'AUSTRALIA' is deformed] (2 pairs)	400 ^T
163	**	A	1½d red Plate 2 <i>Void Corner at Upper-Right [2L59]</i> <i>AJ Mullett Imprint</i> blocks of 8 comprising <i>Early State</i> , <i>Obvious State</i> , <i>Third Imprint ("Comet" in margin below R55)</i> and <i>Fifth Imprint (Small Vertical Line in margin below R55)</i> , well centred for imprint blocks, Cat \$1725. (4 blocks)	500 ^T



Lot 165

165	**	A C1	4d greenish olive Plate 4 <i>John Ash Imprint</i> block of 4 with <i>Diagonal White Line on King's Neck (Early State)</i> ACSC #115(4)z, unmounted, Cat \$1200+ (mounted).	500 ^T
-----	----	------	--	------------------

COMMONWEALTH OF AUSTRALIA - KGV Heads - Small Multiple Watermark Perf 13½x12½

166	**	A	1½d red Plate 4 <i>John Ash Imprint</i> block of 12 (4x3) with varieties j & nb ACSC #92(4)zc, additionally with <i>Type A-B Pairs</i> with <i>Re-Entries behind Roo & Doubling of Shading above Wattles at U/R</i> #92(4)fd & hb, most units - including the imprint block of 4 & <i>Re-Entry [53]</i> - are unmounted, Cat \$2000+. A rare block.	500 ^T
-----	----	---	---	------------------

COMMONWEALTH OF AUSTRALIA - Other Pre-Decimals

Ex Lot 175

175	**/*		1927-65 mint selection with singles, pairs, plate number & imprint blocks noted 3d Airmail plate '4' block **/*, 6d Kingsford Smith imprint block **, 6d Kooka imprint block **/*, Macarthur 2d & 3d imprint strips of 16 **, Robes £1 imprint blocks for both papers ** plus 5/- & 10/- hinged in margins (one without side margin), 1d Princess coil perf gutter block of 64, 1951 Stamp Centenary 2½d complete sheet, some coil pairs & strips including join, booklet panes & minor varieties, generally fine. (100s)	800 ^T
-----	------	--	---	------------------

COMMONWEALTH OF AUSTRALIA - Other Pre-Decimals (continued)

Lot	Type	Grading	Description	Est \$A
177	**O		Single volume KGV collection with lots of duplication including numerous multiples, imprint blocks in profusion including Robes <i>Thick Paper</i> set, some <i>Coil Perf</i> pairs, lots of varieties, generally fine to very fine but some toning/aging in the mint material. (many 100s)	500
179	*OV		Annotated collection to 1936 with Engraved 6d Kooka x3 (two CTO), Kooka M/S mint & CTO at Perth, 3d Airmail booklet pane & booklet stamp x2 on airmail cover to GB, Kingsford Smith 3d <i>Dropping Mail Bag</i> & 6d <i>Extra Islands</i> both mint & 6d <i>Re-Entry</i> in imprint block of 8, 6d Airmail imprint block of 6, Bridge 5/- CTO x2, Large Kooka 6d used imprint block of 4, Jubilee 2d good range of varieties & 2/- x4 (one CTO), SA Centenary imprint blocks of 4, 'OS' Overprints CTO/used, lots of plate numbers & imprints, etc, generally very fine. (few 100)	1,400 ^T



Ex Lot 180

180	**O		Attractive two volume annotated collection of KGV issues with Robes both papers *&U plus £1 'SPECIMEN' Overprint in black & in blue-black (no certificates), Arms 'SPECIMEN' set, many imprint/no imprint blocks including NSW Sesqui & AIF sets, Arms £2 & Aborigine 2/6d <i>Emergency Printing</i> , lots of listed varieties including '2½d' on 2d <i>Medallion Flaw</i> & <i>Misplaced Surcharge</i> both used, Arms £2 <i>Roller Flaw</i> mint & <i>Retouch</i> used, No Wmk ½d <i>Offset</i> mint, etc, many noted as <i>Thin Papers</i> with the comment "Checked with micrometer" but not confirmed by us, generally very fine. (many 100s)	1,200 ^T
186	V	A B1	1948-56 Arms 10/- purple & £2 green <i>Authority Imprint</i> blocks of 4, central Melbourne cds cancels, Cat \$1100+ for mint but much scarcer used. (2 blocks)	400 ^T

OTHER PRE-DECIMALS - Official Stamps

All the lots in this section are from "Pollie's Find", an array of mostly official stamps being offered for the very first time.

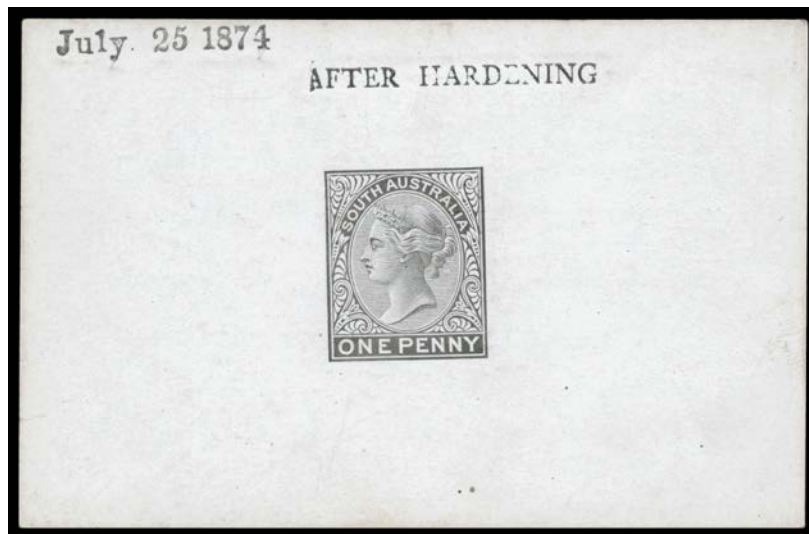
193	**	A/B	PUNCTURED 'OS' : 1929 WA Centenary 1½d ACSC #138ba irregular block of 55 with <i>John Ash Imprint</i> , variable centring, some minor perf separation & a few minor faults, unmounted, Cat \$1600+.	300
200	**	A C1	OVERPRINTED 'OS' : 1931 Airmail 6d sepia ACSC #144(OS) <i>Ash Imprint</i> block of 20 (5x4), minor gum streak on surface of the lower margin otherwise superb, unmounted, Cat \$1075+.	300
203	**	A/B	- 1932 Sydney Harbour Bridge 2d ACSC #146(OS) complete sheet of 80 (10x8) with <i>John Ash Imprint</i> and <i>Three Plate Dots at Right</i> #146(OS)zc, some minor perf separation/crimping & a few minor faults, unmounted, Cat \$3700+. A rare survivor: the only complete 'OS' sheet we have seen.	1,000
204	**	A	- 1932 Sydney Harbour Bridge 3d ACSC #147(OS) large-part sheet of 71 (missing the upper-right corner block of 9) with <i>John Ash Imprint</i> and <i>Plate Number '4'</i> #147(OS)zc, some minor perf separation, unmounted, Cat \$2620+. Another rare survivor: the largest multiple we have seen.	600

COMMONWEALTH OF AUSTRALIA - Decimal Issues

220	**	A	About eighty complete sheets of 100 of small format values to 10c including several QEII 4c with <i>Plate Numbers</i> , album including Navigators <i>Plate Number</i> blocks of 10 of 75c x4 & \$1 x4, other blocks of 75c \$1 & \$4 with <i>Recuts</i> etc, 1960s-70s cross-pane blocks from 200-up printings, 1973 Christmas <i>Plate Number</i> blocks, Paintings range including \$10 strips of 3 & 4, 1971 Christmas <i>Cream Paper</i> block of 25 and <i>White Paper</i> block of 25 & sheet of 100 (folded), large album of AAT blocks, etc, unmounted. (1000s)	1,200
-----	----	---	--	-------

COMMONWEALTH OF AUSTRALIA - Postage Dues**Lot 251**

251 ** A B1 1931-37 CofA Wmk Perf 11 3d carmine & yellow-green Ash Imprint ('N' over 'E A') block of 4 with tiny Frame Break over 'U' of 'AUSTRALIA' and 'RA' Joined ACSC #D118za, the upper units very lightly mounted & the lower units unmounted, Cat \$1500+ (mounted).

1,200^T**SOUTH AUSTRALIA****Ex Lot 428**

428 P A 1868-76 De La Rue selection of proofs comprising 1d die proof on glazed card with 'July 25 1874' & 'AFTER HARDENING' handstamps, 1d plate proof in black imperf block of 6 with Plate Number '2', 1d plate proof in green imperf block of 4 & Perf 14 block of 24 (12x2), and 2d plate proof in orange block of 24 (12x2) from the top of the sheet with Plate Number '2' at U/L & U/R. On Michael Blake's exhibit pages. (5 items)

600

Lot	Type	Grading	Description	Est \$A
-----	------	---------	-------------	---------

TASMANIA

457	**	A A1	1906-07 Crown/A Perf 12½ 1/- rose & green upper-left corner block of 4 with <i>Plate Number '1'</i> BW #T76z, unusually well centred, a couple of minor gum blemishes but unmounted, Cat \$250+ (mounted).	100
-----	----	------	---	-----

NEW GUINEA - General Lots

1144	*/O		Useful selection with a few GRIs & NWPIs, Mandate including Undated Birds set (no gum), 1939 Bulolo mint set (no 10/-), a few imprints etc; also Papuan oddments. (200 approx)	250
------	-----	--	--	-----

NEW ZEALAND**Lot 1184**

1184	*/**	A C1	1935-36 Pictorials Single Watermark 2/- Captain Cook <i>Plate Number '1'</i> corner blocks of 4 comprising Perf 13-14x13½ SG 568 (CP #L13a), unmounted; Multiple Watermark 2/- Perf 13-14x13½ SG 589 (CP #L13c), the lower units unmounted; and 'Official' Perf 12½ SG O132c (CP #LO13f), lower units unmounted; Cat £700++ as mounted singles (CP \$NZ3800 as mounted plate blocks). (3 blocks)	500
1188	**	A B1	1960-66 Pictorials ½d to £1 SG 781-802 (missing the original 1/9d & 3/-) fifty sets mostly in large blocks, some including the 5/- 10/- & £1 with imprint, unmounted, Cat £900+. [We expect there are many plate varieties] (1050)	400

PAPUA NEW GUINEA

1257	**	A	Blocks of 4 with some earlier imprint blocks to 3/-, 10/- Rabaul & £1 Queen, £sd Birds, Decimals apparently complete to 1982, all those we checked are unmounted. (100s)	400
------	----	---	--	-----