

Lot Type Grading Description

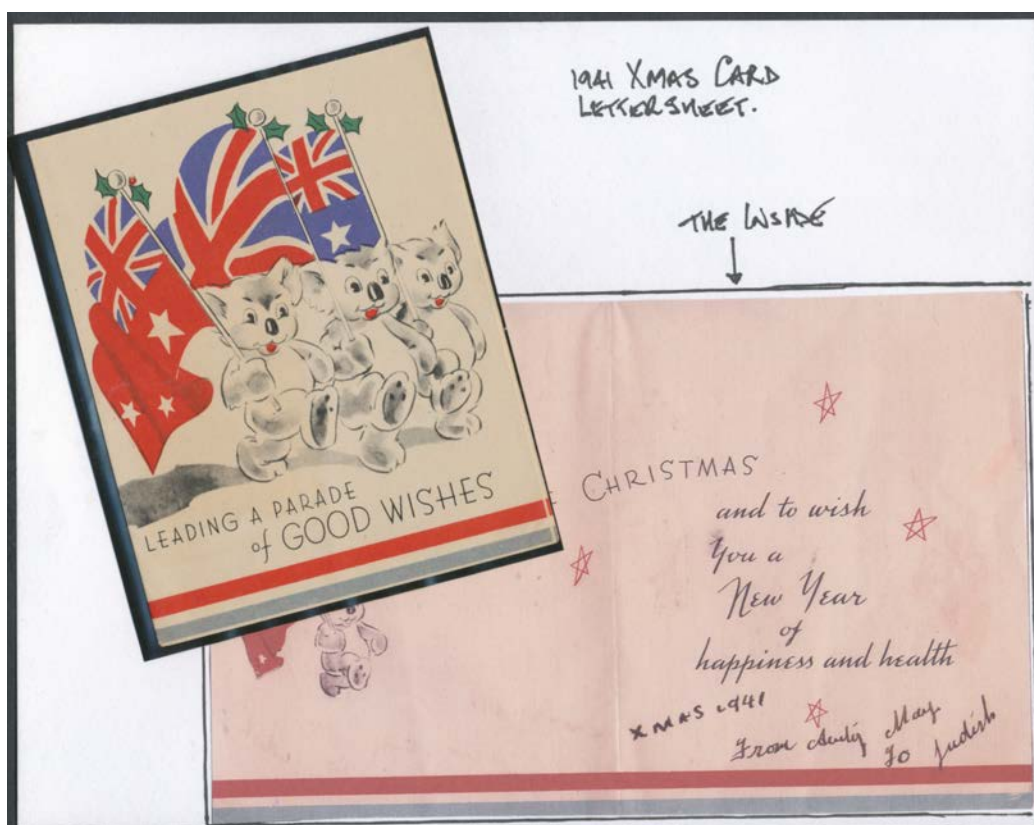
Est \$A

COMMONWEALTH OF AUSTRALIA - Military - World War I



Ex Lot 328

328	CPS	A/B	<p>POWs in GERMANY: 1915-18 mail c/- the British GPO in London or the <i>Australian Red Cross</i> in London comprising covers x4 all with a KGV 1d red, Postal Cards 1d Roo, 1d Fullface & 1d Sideface, and "Star" 1d Envelopes x5, all forwarded under cover to various camps & all but two with camp censor cachets applied on arrival; and mail to POWs sent directly to the camps in Germany comprising covers x2 each with a KGV 1d red, a PPC with the stamp removed (probably by the camp censor), Postal Card 1d Sideface (uncancelled, redirected internally: was the recipient paroled?), and "Star" 1d Envelope (uncancelled), all but the Postal Card without the required POW superscription but all with camp censor cachets applied on arrival, generally fine to very fine; also a 1915 British pamphlet 'COMMUNICATION WITH PRISONERS OF/WAR INTERNED ABROAD'. (18)</p>	700 ^T
329	CPS	A-/B	<p>- Covers (3) & KGV 1d Postal Cards x2 all to Australians known to be POWs in Germany at Cassel (2, both with large circular camp cachet), Crefeld, Dulmen or Gottingen, the last forwarded to Dulmen, various British & German cachets, also a stampless PPC from Switzerland to an Australian POW at Friedrichsfeld bei Wesel. Nice group. (6)</p>	150 ^T



Lot 330

330	L	<p>- 1915-16 issues of "In Ruhleben Camp" Nos 1-10 (1915) plus "The Ruhleben Bye-Election" (propaganda for candidate <i>Israel Cohen</i>); "The Ruhleben Camp Magazine" Nos 1-6 (1916-17); and larger format "Prisoners' Pie/ Ruhleben/New Year 1916"; some separation of the covers etc but generally in sound to fine condition. Lots of humorous content, illustrations etc providing excellent insights into camp life. (18 titles); also WWII <i>Mickey Mouse</i> souvenirs x2 & <i>Marching Koalas</i> Christmas Card.</p>	400
-----	---	--	-----

COMMONWEALTH OF AUSTRALIA - Military - World War II**Ex Lot 331**

331	CPS	A/B	Australian POWs in Europe group with Acknowledgement of Receipt of Parcel cards to London (unused) & Switzerland, advice of capture card to WA, advice of address cards to London & WA, two 'Feldpostkarte' with 'KRIEGSGEFANGENEN/SENDUNG' h/s in blue both to SA, various printed POW Postal Stationery items including an Envelope to WA with enclosed letter on matching notepaper, two plain covers from Parchim Camp to Victoria both with the enclosed letters, etc, many are fine to very fine. A good basis for expansion. (25)	600 ^T
333	C		Military Camp covers including 'RELIEF/No8' cds with provisional 'Morningson Military Camp' R label (open for 12 days only), 'MIL PO DARBY No1' with manuscript R label (renamed Foster Mil PO 1.8.42), 'DHURRINGILE' (renamed Tatura Mil PO 16.4.40), 'FOSTER No1' with typed R label (closed 14.1.43), 'MANGALORE' (PO 3.8.1942; closed 15.6.1943), 'MT MARTHA' x3 one with 'ARMY/YCR 1V40/TELEGRAPHS' transit, 'OCEAN GROVE' (PO 20.11.1939; closed 19.12.1939), 'SHOWGROUNDS' x2 with different rubber d/s, condition variable. (19)	300

COMMONWEALTH OF AUSTRALIA - Military - WWII - Prisoners of War in Asia

341	PS	A/A-	All-different unused POW Postal Stationery group comprising Envelopes in black/white & in blue/white with incorrect text 'C/o PRISONERS OF WAR INFORMATION BUREAU', Postal Cards all in blue/white x3, and Airmail Postal Cards all in blue/white x3 (one with 'nterment' Error, believed to be the only recorded example). (8)	450 ^T
342	CPS	B/A	CHINA-TAIWAN: Undated cover from a colonel to Melbourne with Taiwan Camp censor cachet & camp censor Yoshikawa chop, flap removed; and POW Postal Card with camp censor Nishikawa chop from a British major to England & redirected to Queensland; both with large 'SERVICE DES/PRISONNIERS DE GUERRE' cachet used only on POW mail from Taiwan. (2)	375 ^T

**Ex Lot 343**

343	PS	B/C	JAPAN: Various types of POW Postal Cards x4 (one duplicated) & Envelopes x4 from Fukuoka, Hakodate x2, Osaka x2 (one with <i>Morimoto</i> censor's cachet) & Tokyo x3 sent to Australia, condition rather mixed. (8)	750 ^T
-----	----	-----	---	------------------

COMMONWEALTH OF AUSTRALIA - Military - WWII - Prisoners of War in Asia (continued)

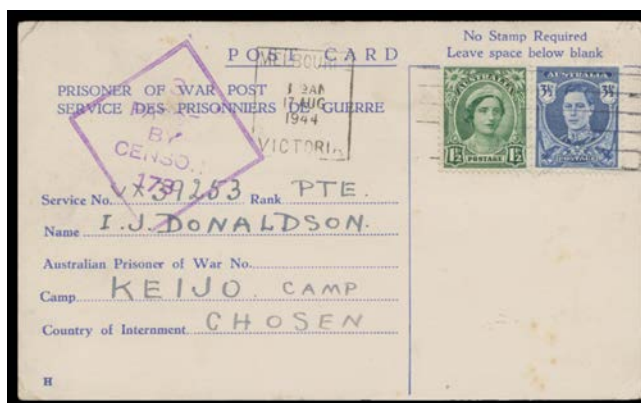
Lot Type Grading Description

Est \$A



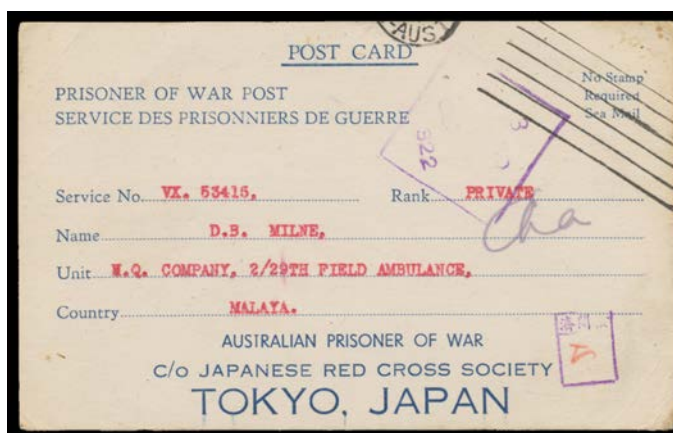
Ex Lot 344

- 344** CPS A-/B - **ZENTSUJI:** 1942 POW Envelope printed in blue & red to NSW with Camp censor cachet in violet & standard Japanese cds, 'CROWS NEST/24AP43' arrival cds & redirected within Sydney, undeliverable and attempted return via Red Cross with Swiss boxed trilingual 'Retour-Zuruck/Service postal suspendu/...' h/s, also POW Postal Card printed in black & red on buff with 'ZENTSUJI' Error (very fine), plus inwards mail comprising three plain envelopes, Red Cross envelope with Thick Bar, blue/white envelope with hand-drawn Christmas card, and Red Cross blue/white lettersheet, all from NSW or Victoria. (9)

850^T

Ex Lot 345

- 345** CPS A/B **KOREA:** Inwards mail to Keijo Camp comprising plain cover, blue/white lettersheet, Red Cross envelope with Thick Bar x2 and two blue/white Postal Cards uprated for airmail (both incorrectly paid the 5d letter rate instead of the 4d postcard rate), also blue/white envelope (opened-out) and POW Relatives Association blue/white lettersheet both to Jinsan Camp, plus Red Cross envelope to Singapore redirected to "CHOSEN" (faults), condition variable. (9)

850^T

Ex Lot 346

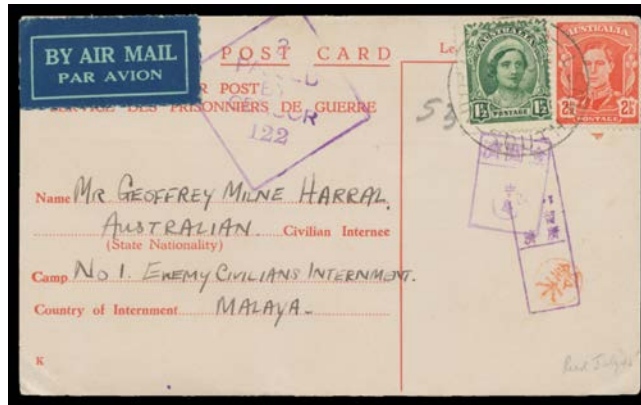
- 346** CPS A-/B **MALAYA - CHANGI:** Inwards mail including Red Cross Envelopes with Three Thin Bars x3 or Thick Bar x5 (one with Japanese Red Cross cachet in rosine), Red Cross blue/white Postal Card with camp censor Ta chop; and by air plain covers at 5d rate x2 (one shortpaid 1d) & blue/white Postal Card uprated with 4d Koala with camp censor Kinoshita chop; well above-average condition. Some with transit times of between 9 & 18 months noted. (12)

750^T

COMMONWEALTH OF AUSTRALIA - Military - WWII - Prisoners of War in Asia (continued)

Lot Type Grading Description

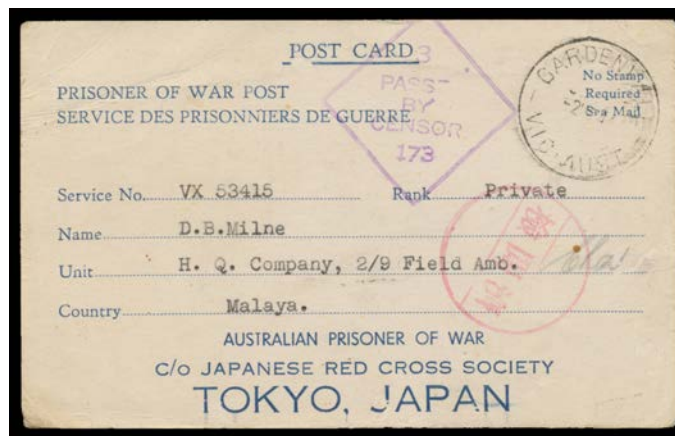
Est \$A



Ex Lot 347

347 CPS B - All-different identified camp censor cachets on inwards mail comprising plain cover with unnecessary 2½d payment (with the original enclosure), Red Cross Envelopes with Thick Bar x2, Red Cross blue/white Postal Card; and by air postcards red/white or blue/white x2 different types (one overpaid with 5½d Emu), minor blemishes. (8)

600^T



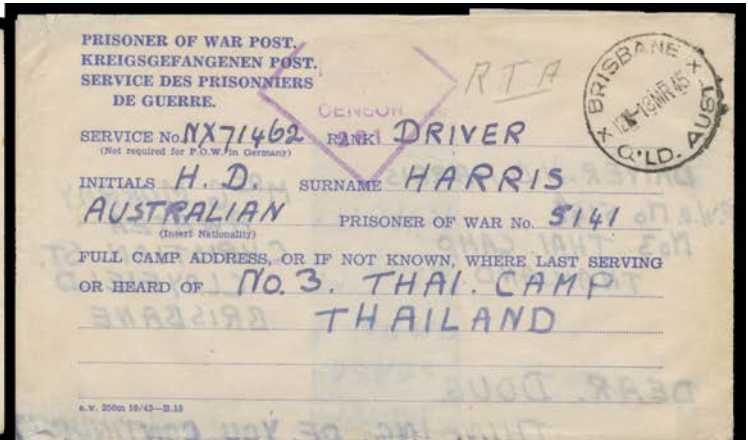
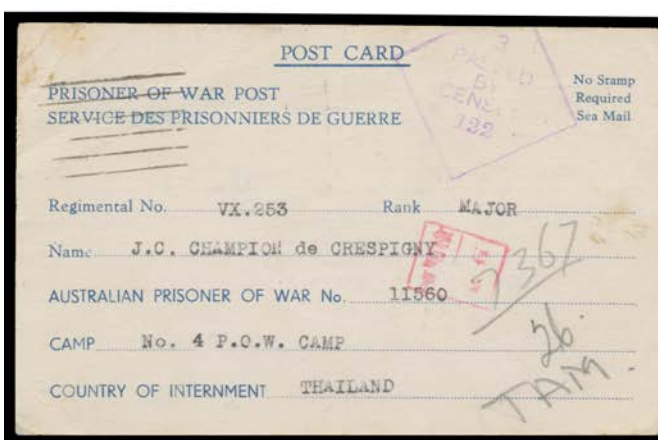
Ex Lot 348

348 PS A/B - All-different POW Postal Stationery sent inwards comprising Red Cross Postal Cards blue/white x2 & black/white, Envelopes blue/white (with letter), black/white, or red/white with Three Thin Bars (with letter) or Thick Bar, and Lettersheets red/white or blue/white; POW Relatives Association Envelope; and generic-issue Postal Card blue/white, Envelope red/white & Airmail Envelope blue/white; six sent by air, a few are remarkably fine. (15)

1,250^T

349 CPS A/B **NETHERLANDS INDIES - JAVA:** 1944 plain envelope from WA with Perth machine cancel, Melbourne censor label & cachet; blue/white postcard to Camp "X", Red Cross envelopes x3, one received after 23 months, one with faint endorsement on face "Received 1.4.45 Koshu Mount/Siam" after 26 months transit!, the last to a member of "G" Force captured on Java & sent to Singapore & from there to Japan and repatriated per HMS "Formidable" which is endorsed on the face. (5)

450^T



Ex Lot 350

350 CPS - **THAILAND:** 1943-45 mail to Camp No 1 (Nong Pladuk) POW Postal Card by air endorsed "RTA" & with small redirection label, with the enclosed letter; Camp No 2 (Chungkai) plain cover & blue/white POW Envelope both by air; Camp No 3 (Nike or Nieke) blue/white Red Cross lettersheet endorsed "RTA"; Camp No 4 (Tamuang) plain cover by air with censor Sato cachet, four different blue/white POW Postal Cards (two by surface both with censor Ishikura cachet, one undeliverable & returned); and an undesignated camp black/white POW Envelope & blue/white Red Cross lettersheet with censor Matsushita or Adachi cachets; condition variable. [All four camps were along the infamous Burma-Siam Railway] (12)

1,800^T

COMMONWEALTH OF AUSTRALIA - Military - WWII - Prisoners of War in Asia (continued)

Lot	Type	Grading	Description	Est \$A
351	CPS	A/B	LIBERATED POWs: Four covers - two by air - & seven aerogrammes all from GB to liberated POWs all addressed c/- the GPO Melbourne, various redirections & cachets including 'NO RECORD OF/Repatriation/OF ADDRESSEE' x2 & similar straight-line type, and three with 'IT IS REGRETTED THIS LETTER COULD/NOT BE FORWARDED IN TIME...'; one addressed directly to Japan but with 'VIA BASE PO/MELBOURNE/AUSTRALIA' cachet in blue (stained), generally fine. (11)	300 ^T
352	PS	A	- 1945 (Oct 1) usage of GB formular aerogramme endorsed "Lib UK PW" with the message headed "c/o 3 Australian Repl Co / Manila PI" to England with 'AUST ARMY PO/241' cds. [<i>Ted Proud</i> records APO 241 at Hollandia Feb-June 1945, then in Japan from May 1946; <i>Phil Collas</i> records usage at Morotai from Feb 1945 "until late in that year" & in Japan in 1946. Neither mentions usage in the Philippines]	350 ^T
353	C	A-	- 1945 (Oct 8) Liberated Prisoner of War usage of <i>Comforts Fund</i> cover endorsed "Liberated UK POW" & on the flap "HQ3 Australian Reception Group" to England with 'AUST ARMY PO/241' cds, couple of minor blemishes. [<i>Ted Proud</i> records APO 241 at Hollandia Feb-June 1945, then in Japan from May 1946; <i>Phil Collas</i> records usage at Morotai from Feb 1945 "until late in that year" & in Japan in 1946. Neither mentions usage at the HQ3 POW Reception Centre believed to be at Manila, Philippine Islands]	350 ^T

NEW ZEALAND - Postal History

1215	C/L	A	1916 (Mar) cover endorsed "...Motuihi...Prisoner of war!" on the flap, to Germany with 'From Prisoner of War/Free' h/s (typed?) at lower-left & superb 'PASSED BY THE/MILITARY CENSOR/N.Z.' h/s in violet, with the enclosed letter headed "Motuihi 2.3.1916". <i>Exc Gordon Darge</i> . [The 2-line Free marking appears to be produced by the same typewriter as the address & the enclosed letter! This suggests that the inmates were responsible for the endorsement! NB: Startup & Proud's illustration at page 47 is a caricature only] (2 items)	250
------	-----	---	--	-----