

Lot Type Grading Description

Est \$A

COMMONWEALTH OF AUSTRALIA - Other Pre-Decimals



Lot 190

190	E	B	<p>ESSAYS: 1964 QEII Proposed Coil Issue Perf 14½xImperf 5d brown & deep blue photogravure essay ACSC #398E(1)A, horizontal crease, officially defaced with magenta die. Rare unissued essay & an important item for the collector of QEII issues, or of coil stamps. [The ACSC states that only one undefaced example has been recorded in private hands: Cat \$10,000. It is noted that it is Perf 14½xImperf but that may be an error. The <i>Australia Post Archives</i> contains a range of examples with various defacements that may have been related to cancellation experiments]</p>	
------------	---	---	---	--

550

COMMONWEALTH OF AUSTRALIA - Decimal Issues



Lot 231

231	P	A/A-	<p>1977 Silver Jubilee 18c imperforate proof block of 4 (3x2), faint bend as is often the case, unmounted, Cat \$1500+.</p>	300
235	P**	A	<p>2000 P-Sheet proofs for Sydney Football Club sheet and the sheets for players <i>Paul Kelly, Darren Cresswell, Greg Stafford, Michael O'Loughlin and Wayne Schwass</i> all imperforate & ungummed and without the 45c Hologram stamps, plus the set of six sheets as issued for comparison. (12 sheets)</p>	400

COMMONWEALTH OF AUSTRALIA - Coil Stamps**Lot 245**

245	E	A	1964 QEII Proposed Coil Issue Perf 14½xImperf 5d brown & deep blue photogravure essay ACSC #398E(1)A vertical pair with the perfs reinforced, officially defaced with magenta die. Rare unissued essay & an important item for the collector of QEII issues, or of coil stamps. [The ACSC states that only one undefaced example has been recorded in private hands: Cat \$10,000. It is noted that it is Perf 14½xImperf but that may be an error. The <i>Australia Post Archives</i> contains a range of examples with various defacements that may have been related to cancellation experiments]	1,100
------------	---	---	---	-------

COMMONWEALTH OF AUSTRALIA - Postal History

307	C/CX	A/B	1928-34 Midget 3 meters with unnumbered proof impressions with <i>Herald</i> or <i>Cyclone Fencing</i> slogans, then commercial covers with '16' for C&G (registered), 'A7' for <i>William Adams</i> (large front with 2d & 3d x4), 'B1' for <i>Melbourne Electric Supply Co</i> (registered), 'B4' with 'GLASS CONTAINERS' slogan, 'B7' with <i>Remington Typewriters</i> slogan, & 'D1' for <i>United Press & Pictorial Newspapers</i> . (9)	150
-----	------	-----	---	-----

QUEENSLAND**Lot 412**

412	P	A	1882-95 Large Chalons £1 perforated plate proof in plum on thick watermarked paper. [Basset Hull at page 160 states that this was a colour trial made in March 1897, apparently for a proposed change of colour]	300
------------	---	---	---	-----

**Lot 415**

415	P	A	RAILWAY STAMPS: 1872 Southern & Western Railway 1/- imperforate plate proof in blue on thin card, margins good to large, magenta pen-cancel across the face. See <i>Elsmore's</i> footnote below #QR2: rated RRRR . [Ray Kelly's similar proof - stained on the reverse - sold at the <i>Prestige</i> auction of 1.12.2007 for \$977]	600
------------	---	---	---	-----

Lot Type Grading Description

Est \$A

SOUTH AUSTRALIA

Ex Lot 424

424 P A/B 1854-67 Perkins Bacon imperforate plate proofs comprising 1d in green, 2d vertical pair in black, 4d single & pair in different shades of rose-carmine, 6d block of 6 in blue (central vertical crease) & 1/- in black. (7 items)

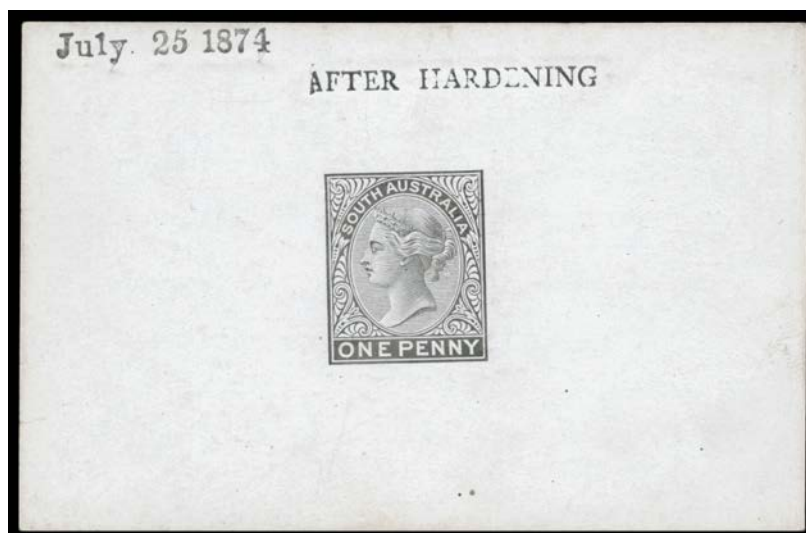
600



Lot 425

425 P A- 1860-69 Second Roulettes 4d finished die proof in black on India paper affixed to a small piece of card (44x47mm), a couple of trivial blemishes. Ex John Griffiths and Michale Blake: sold at the Prestige auction of 7.2.2014 for \$3450. RPSofL Certificate (1972).

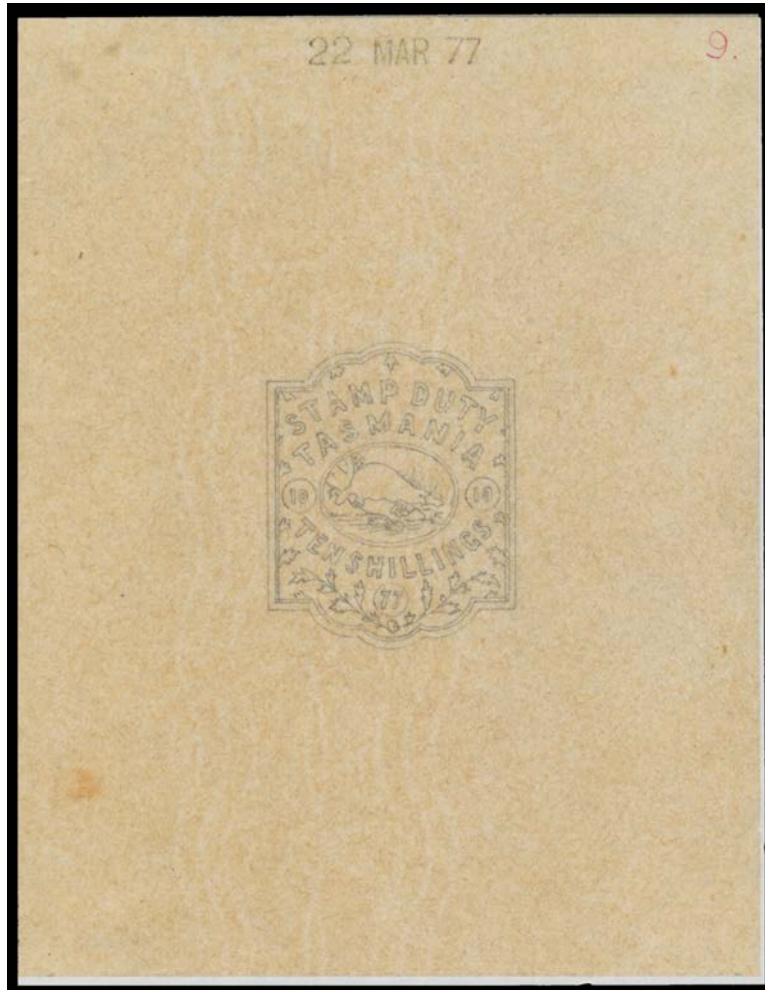
2,400



Ex Lot 428

SOUTH AUSTRALIA (continued)

Lot	Type	Grading	Description	Est \$A
428	P	A	1868-76 De La Rue selection of proofs comprising 1d die proof on glazed card with 'July 25 1874' & 'AFTER HARDENING' handstamps, 1d plate proof in black imperf block of 6 with <i>Plate Number '2'</i> , 1d plate proof in green imperf block of 4 & Perf 14 block of 24 (12x2), and 2d plate proof in orange block of 24 (12x2) from the top of the sheet with <i>Plate Number '2'</i> at U/L & U/R. On <i>Michael Blake's</i> exhibit pages. (5 items)	600

TASMANIA**Ex Lot 459**

459	E	A	REVENUES - IMPRESSED STAMP DUTY: 1877 original artwork for the 10/- & £5 Platypus designs in pencil on yellow tracing paper (88x114mm) numbered "9" or "11" in red at upper-right & both with '22 MAR 77' h/s at upper-central. Unique! <i>Ex De La Rue Archives.</i> (2)	900
-----	---	---	---	-----

WESTERN AUSTRALIA**Lot 801**

801	P	A	1861 Perkins Bacon 1/- horizontal plate proof pair in deep green with the <i>Watermark Sideways</i> , a gorgeous rich shade, margins close to large. Rare. <i>Ex Trevor Hiscock.</i>	600
-----	---	---	---	-----

Lot Type Grading Description

Est \$A

THEMATICS & SUBJECTS897 P A **SCOUTING:** Aitutaki 1983 Scouting 75th Anniversary M/S imperforate progressive colour proofs, unmounted. (5) 300^T**WORLD PICTURE POSTCARDS**

Ex Lot 919

919 C A/A+ **Artist "glamour" cards** group comprising *Jack Abeille* 1898 Fashion Through the Ages x7, 1898 Bathing Costumes x3, 1899 Bathing Costumes x3 and 1899 *Caprice* Flowers 'La Tulipe' & 'La Violette' all Undivided Backs (Cat £60 each), *M Munk* (Vienna) early-1900s Divided Backs Erotica Topless Ladies & Amazing Hats x8 (a few minor blemishes), Stylish Ladies with Plain Backs x 6 (proofs?, plus one of these designs - Divided Back - used under cover in 1907), plus *E Louis Lessieux* 1900 Dancing Through the Ages set of 6 with Undivided Backs (undercatalogued at £40 each), then group of *Charles Dana Gibson Snap Shots* 'Gibson Girls' & Studies in Manners/Class, mostly used; also his *Henderson & Sons* 'Pictorial Comedy' Sets No 10 & 11 each of seven 'framed' cartoons, unused & fine to superb condition except as noted. (69) 600^T

COOK ISLANDS

991 P A/B **1979 Captain Cook Death Bicentenary** M/S imperforate progressive colour proofs unmounted, one folded & another with blue-ink mark around a printing flaw otherwise fine. (7) 300^T

992 P A **AITUTAKI:** 1974 Shells imperforate set of 12 colour proofs 3-up in four separate blocks, unmounted. (4 items) 450^T

FRANCE

1006 P A **Packet of *epreuves de luxe*** including several blocks of 4. Attractive. (32) 320

NAURU

Lot 1142

1142 P A+ **1966 Decimals \$1 Map die proof** in the issued colour in recessed presentation mount. Rare & superb! [This is a genuine die proof, unlike some alleged "proofs" of similar appearance which have had issued stamps inserted] 450

Lot Type Grading Description

Est \$A

NEW ZEALAND**Lot 1176**

1176	P	A	1882-1900 Second Sides Cousins 5d die proofs in shades of red or pink on various ungummed unwatermarked papers, two reduced to stamp-size, the others with large margins. Ex "Midas" & Sir Gawaine Baillie. (10)	450
-------------	---	---	---	-----

**Ex Lot 1179**

1179	P	A	1906 Waterlow Plate "W2" 1d Types A to E die proofs in black on ungummed unwatermarked paper. Ex "Midas" & Sir Gawaine Baillie. [The die comprised five units] (5)	500
-------------	---	---	---	-----

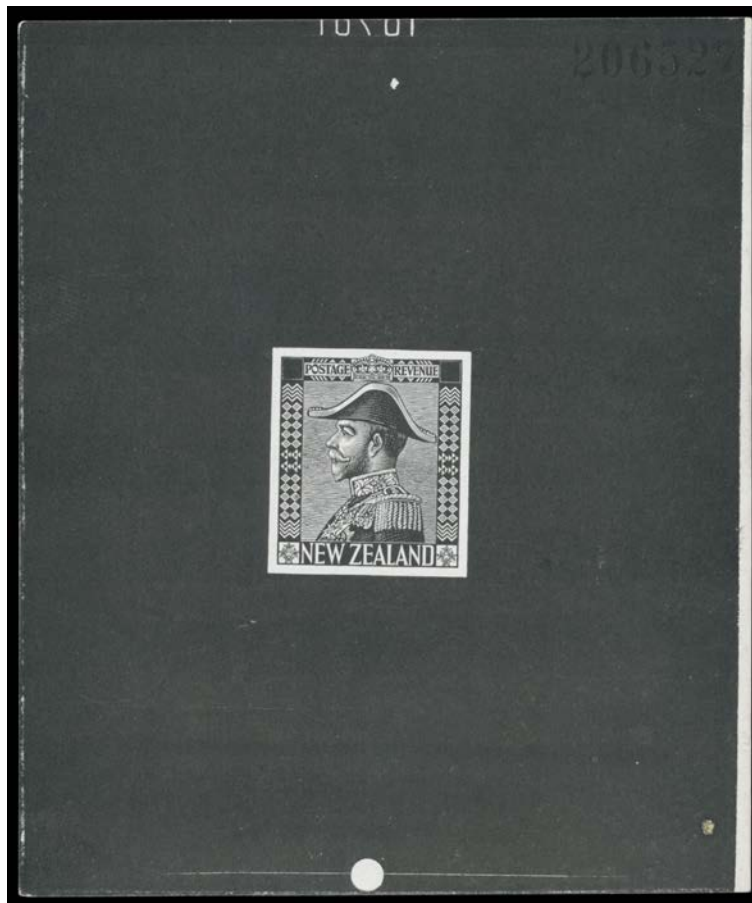
**Ex Lot 1180**

1180	P	A	- 1d Types C D & E die proofs in carmine and 1906 Subsidiary Dies 1d Die 3 & Die 2 severed se-tenant pair of die proofs in scarlet all on ungummed unwatermarked paper. Ex "Midas" & Sir Gawaine Baillie. (5)	350
1181	P	B	1920 Victory 1d die proof in black on glazed card (60x85mm), minor blemishes.	300

NEW ZEALAND (continued)

Lot Type Grading Description

Est \$A



Lot 1182

1182	P	A	1926-34 Admirals undenominated master die proof for the high values in black on wove stock (87x114mm) with uncleared surrounds & <i>Implement Number '10781'</i> (? , reversed) at the top. A dramatic proof.	750
1186	P	A	1940 Centennial vertically <i>se-tenant</i> stampsize photographic proofs of <i>James Berry's</i> essays for 1) ½d Arrival of Maori, 1½d Abel Tasman (with the central vignette replaced from a different sheetlet in scarlet) & 2½d Immigrants in yellow-brown; and 2) 4d Flag Raising, 8d Transport & 5d Gold Mining (with the central vignette replaced from a different sheetlet in grey-green). Important developmental proofs for this key commemorative issue. [<i>James Berry</i> was responsible for 10 of the 12 issued designs] (2 items)	350



Ex Lot 1195

1195	P	A	1984 Christmas imperforate progressive colour proofs comprising set of 3 with white frames, 18c & 35c with green frames and 35c & 45c with grey frames, unmounted. (7)	600 ^T
------	---	---	--	------------------

NIUE

1222	**/*O		1902-1960s group with 'NIUE' Overprints on New Zealand Pictorials, KEVII, KGV & Postal Fiscals including 1918 5/- Perf 14, 1918-23 set * (£1 with minor perf fault) plus 1927-28 <i>Cowan Paper</i> 10/- & £1, also 1931 set **, 1941-43 <i>Wiggins Teape Paper</i> set * (toning) & 1942-45 Multiple Wmk set *, plus 1920 Pictorials Plate Proof imperf pairs set, condition generally fine. (123)	500
------	-------	--	---	-----

ZANZIBAR**Ex Lot 1333**

1333 P*PS A **Two exhibit pages** with 1913 master die proof with blank value tablets & faint guidelines in the margins in black on thin card recessed in a larger mount, 6c violet Postal Card in the same design with 'SPECIMEN' Overprint, 1936 25c imperf colour trial pair in purple on white paper with ruled blue lines on the reverse, 1936 Jubilee set on registered philatelic cover, 1952 20c & 50c Aerogrammes unused, etc. *Ex "Whiskers". (12)*

800