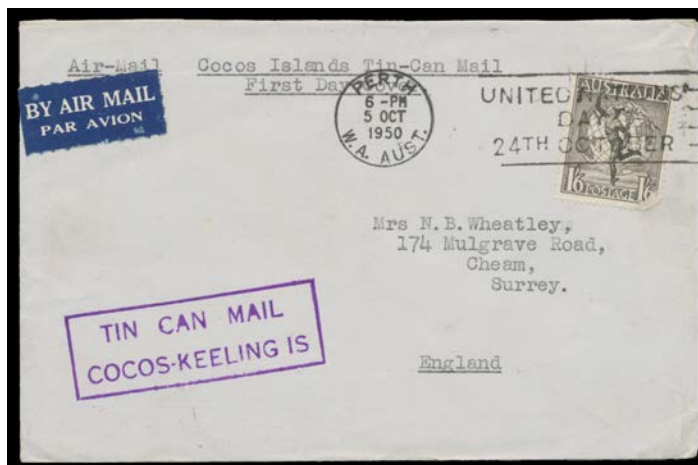


Lot Type Grading Description

Est \$A

COCOS ISLANDS - Postal History**Ex Lot 988**

988 C B/A **1950** cover to England with "LJ Wheatley/Cocos Islands/co Cable & Wireless Ltd/Singapore" return address and superb strike of *Leigh-Parkin's* boxed 'TIN CAN MAIL/COCOS-KEELING IS' h/s in violet alongside Australia 1/6d Hermes (fault) applied for airmail & cancelled with Perth '5 OCT' slogan, endorsed "First Day Cover" for the cachet's introduction, plus *real photo* PPC of tiny yachts collecting Tin Can Mail from the passing P&O "Orion" off Cocos Islands. (2)

400^T**Lot 989**

989 C A- **1951** *Leigh Parkin* airmail cover to Devon with very fine strikes of the boxed 'TIN CAN MAIL/COCOS-KEELING IS' h/s & straight-line 'Per WAVE BARON' h/s both in violet, Ceylon 75c for airmail affixed & tied by Colombo cds of 22JA/51, very minor blemishes. *Ex Kim Dwyer*: sold at the *Prestige* auction of 24.6.2006 for \$2185. [This was the only tin can mail per 'Wave Baron'. On 5.1.1951, an attempt by RMS 'Orion' to collect the Tin Can Mail 'barrel' failed. The 'Wave Baron' passed the islands on 17.1.1951 & was able to collect the mail]

1,200

Lot Type Grading Description

Est \$A

PITCAIRN ISLANDS - Postal History

Lot	Type	Grading	Description
1264	C	B	1947-53 personal correspondence group (letters enclosed) including 1948 airmail to <i>Edward Douglas Jr</i> in Hawaii with KGVI 3d and 6d, 1949 illustrated airmail to USA with KGVI 1/- single, 1953 Christmas card to New York with KGVI 3d single and 1956 fold-out views cards x2 to USA with KGVI 2d single or KGVI ½d and 1½d (faulty) all from <i>Jessie Clark</i> , 1950 to USA with Wedding 1½d from <i>Lucy Christian</i> , also 1948 from USA to Solomons and 1947 from Galapagos to USA with 'POST OFFICE/GALAPAGOS' Tin Can Mail cachet and US 5c tied APO '662' cds, plus 1951 letter describing voyage from Galapagos to Easter & Pitcairn Islands, minor problems. (8 + letters)

400^T