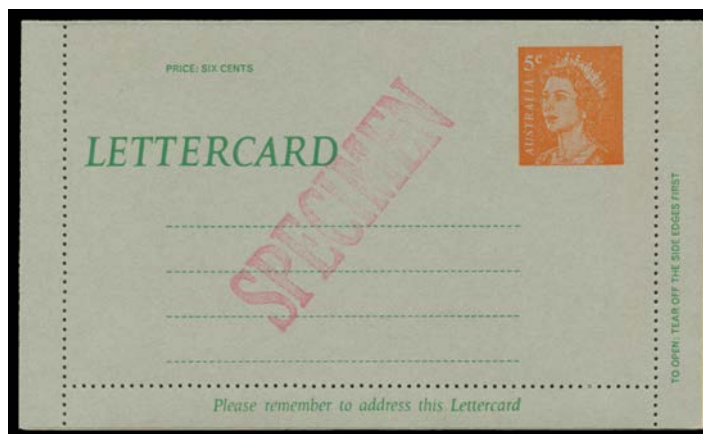


Lot	Type	Grading	Description	Est \$A
-----	------	---------	-------------	---------

**COMMONWEALTH OF AUSTRALIA - Postal Stationery**

92	PS	A	'SPECIMEN' Overprint in Red 80x13mm on KGV 2½d brown Wrapper & QEII 5d Letter Sheet, and 104x17mm on QEII 2½d brown & 5d blue Wrappers & 10d Constellation Aerogramme, Cat \$525. (5)	200
93	PS		Useful batch including Territories formular Letter Card, KGV 2½d Envelope with <i>Albino Embossing</i> , STO Envelope QEII 5d for <i>RAS Show</i> used x2, KGV 1d 'MILITARY ENVELOPE' Type I (superb), QEII Letter Sheet overprinted for use as a postage due advice superb used), three different WWI POW Envelopes, WWII 4½d 'AIR MEDAL SECTION' Wrapper (superb unused), and a few others; also a folio of unused private formular aerogrammes with various permit numbers. (17 + Aerogrammes) [See also Parcel Labels Lots 173 to 177]	400
94	PS	A	1966 Australian Post Office 'APO Mailing Course Information Kit' with an array of forms & brochures plus 4c Letter Card, Envelope both sizes, Wrapper & Letter Sheet and Reply Coupons x4 all with <i>sans serif</i> 'SPECIMEN ONLY' h/s in violet. We haven't previously offered a complete kit.	150
95	PS	A	c.1967 Australian Post Office 'APO Mailing Course Information Kit' different format with a lesser selection of forms & brochures plus 4c Letter Card, Envelope both sizes, Wrapper & Letter Sheet, 24c Registration Envelope and Reply Coupons x2 all with <i>seriffed</i> 'SPECIMEN ONLY' h/s in violet.	150

**Ex Lot 96**

96	PS	A	'SPECIMEN' or 'SPECIMEN ONLY' handstamps on various QEII issues, good variety. Scarce material. (13)	400
97	PS		Album with Postal Cards KGV Full-Face Coronation x3 unused, Victorian Scenes 'FLINDERS ST MELB' & 'GOLD DIGGERS, VICTORIA' unused, Star 1d red STO for <i>Customs House Sydney</i> x2 used, scenic Letter Cards 1d Fullface x2, Kangaroo x3, Sideface 1d blue 'PERTH ROAD, ARMADALE, WA' (scarce view) & 2d red 'MOSMAN'S BAY', Registration Envelopes mostly used some with added KGV frankings, Wrappers including ½d Kangaroo unused and KGV ½d+½d doubleton used, a few KGV & QEII Envelopes with some STO, also a few Aerogrammes and two Telegrams (one with envelope), condition mixed but many fine. (95)	500
98	PS		POSTAL CARDS: 1911 Fullface 1d exhibit pages with P1 the three different <i>Re-Entries of the Banner</i> unused (Cat \$500 each), & uprated with SAust ½d to Germany, Coronation types x4 different one uprated with SAust ½d to Germany, New Admonition P23 uprated with SA ½d to Austria and uprated with ½d Roo to Belgium, Hungary & Italy, and a few later issues, generally fine to very fine. (18)	500
99	PS	A/B	LETTER CARDS: 1911-12 Fullface 1d issues first line ending '...any' on Green and on Flimsy Off-White; first line ending '...to' on various stocks x9 different views, 1d+1d Reply Letter Card x2 different view combinations, 1917 'REPLY' Barred-Out Zig Zag Roulette Outer-Half, and Perf 12½ Inner-Half x3 different views (one trimmed in the left-hand margin), some minor blemishes but generally fine to very fine unused (16)	600
100	PS	A/B	- 1911-12 Fullface 1d issues first line ending '...any' on Flimsy Off-White x3 different views, first line ending '...to' on various stocks x14 views - a couple duplicated but in different colours - including 'HUON RIVER' & 'SHEEP STATION/WIMMERA SA' and a few scarce colours, condition variable but all are presentable used (no folds or filing holes) & some have full margins, a couple are CTO. [NB: as a general rule, all scenic issues are scarcer used than unused, a fact that is not reflected in their respective catalogue values] (16)	400

**Lot 101**

101	PS	A-	- 1911 Fullface 1d first line ending '...any' on Pale Green Stock ACSC #LC1 'MOSMAN'S BAY/SYDNEY NSW' (Ferry in the Distance) in sepia, minor blemishes, unused, Cat \$400.	150
-----	----	----	---	-----

**COMMONWEALTH OF AUSTRALIA - Postal Stationery (continued)**

Lot	Type	Grading	Description	Est \$A
102	PS	A+	- 1911 Fullface 1d first line ending '...any' on Pale Green Stock ACSC #LC1 'MOSMAN'S BAY/SYDNEY NSW' (Ferry in the Distance) in sepia, used to "Jerusalem/Near Kadina/SA", Cat \$200. Superb!	100
103	PS	A+	- 1911 Fullface 1d first line ending '...any' on Pale Green Stock ACSC #LC1 'ZOOLOGICAL GARDENS/PERTH WA' in sepia, unused, Cat \$200. Superb!	100
104	PS	A	- 1911 Fullface 1d first line ending '...any' on Off-White Flimsy Stock ACSC #LC3 'LAUNCESTON/TAS' in dull purple, unused, Cat \$300.	150
105	PS	A-	- 1911 Fullface 1d first line ending '...any' on Off-White Flimsy Stock ACSC #LC3 'QUEEN'S GARDENS/PERTH WA' in dull lilac, unused, Cat \$300.	100
106	PS	A-	- 1911 Fullface 1d first line ending '...any' on Off-White Flimsy Stock ACSC #LC3 'ZOOLOGICAL GARDENS/PERTH WA' in blue-grey, unused, Cat \$300.	100



**Lot 107**

<b>107</b>	PS	B	- 1911 Fullface 1d first line ending '...any' on Ivory Surfaced Stock ACSC #LC4 'SHEEP STATION/WIMMERA SA' (error for Victoria), used to GB, minor blemishes, Cat \$400. Very scarce view, from a small print-run.	250
------------	----	---	--	-----



**Lot 108**

<b>108</b>	PS	C	- 1911 Fullface 1d first line ending '...any' Rouletted ACSC #LC5 'MOSMAN'S BAY/SYDNEY NSW' (Ferry in Distance), small corner selvedge missing & the view side a bit faded, Cat \$1000. The rouletted cards are very scarce.	250
------------	----	---	--	-----



**Lot 109**

<b>109</b>	PS	A	- 1911 Fullface 1d first line ending '...any' Rouletted ACSC #LC5 'ZOOLOGICAL GARDENS/PERTH WA' in red-brown, slight misfold, very fine local usage but uncanceled, Cat \$600.	400
110	PS	A-	- 1911 Fullface 1d first line ending '...to' on Grey Stock ACSC #LC10 'HUON RIVER/TASMANIA' in blue, unused, Cat \$400. [This was a substituted view, in use for only a short period]	150

## COMMONWEALTH OF AUSTRALIA - Postal Stationery (continued)

Lot Type Grading Description

Est \$A



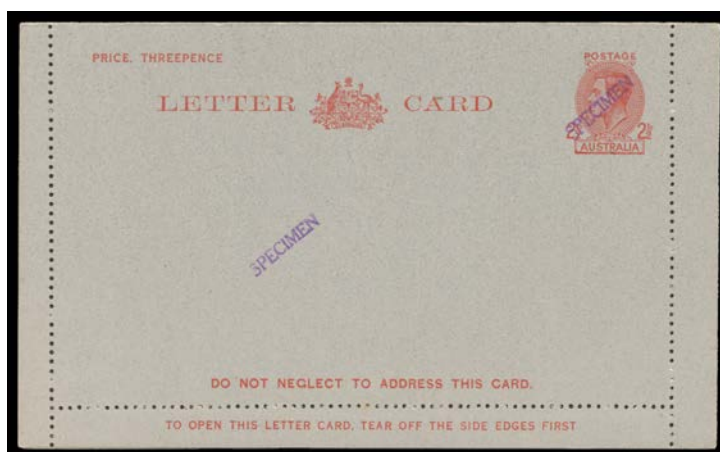
Ex Lot 111

111	PS	A/A-	- 1911 Fullface 1d first line ending '...to' on Thick White Stock (Off-White Inside) ACSC #LC11 eight different views in six different colours, unused, Cat \$1200. (8)	400
112	PS	A/A-	- 1911 Fullface 1d first line ending '...to' on Thick White Stock (Buff Inside) ACSC #LC12 four different views in four different colours, unused, Cat \$700. (4)	240
113	PS	A	- 1911 1d+1d Reply Letter Card ACSC #LC13 ('ZOO, ADELAIDE' & 'ALBERT BRIDGE/QUEENSLAND'), unusually fine & intact, Cat \$300. [The scarcest of the five view combinations]	150



Lot 114

114	PS	B	- 1930-38 KGV 2d red with ½d Kangaroo added & price at upper-left scored-through, 'SPECIMEN' h/s in violet twice on the card & <i>Double Impression One Inverted</i> on the ½d, a few pinholes from where affixed to a notice board at the Melbourne GPO. Unlisted in the ACSC. An important item for collectors of 'SPECIMEN' material: <b>the double handstamp error has not previously been seen by us.</b> [Despite being a KGV issue, this item must date from 1942 when the rate was increased to 2½d & the cost to 3d]	500
-----	----	---	---	-----



Lot 115

115	PS	A+	- 1942 KGV 2½d with 'SPECIMEN' h/s in violet across the stamp & centrally ACSC #LC69Aw, Cat \$500. Superb! [The ACSC states "one example is recorded"]	350
116	PS	A	<b>ENVELOPES:</b> 1979 Founding of Hobart Anniversary 20c with <i>Dark Blue Printing (Building) Omitted</i> , unused. With a normal envelope for comparison. A striking error. (2)	200
117	PS	C	<b>ENVELOPES - OFFICIAL:</b> 1918 KGV Sideface 1d carmine with 'OS'-of-Dots + ½d green with Solid 'OS' ACSC #EO5 for <i>Deputy Commissioner of Maternity Allowances</i> (Melbourne) to Malvern with <i>Krag</i> machine cancel of 17MR/1920 & Malvern arrival b/s of 18MR20, heavy vertical crease & associated minor tear at the top, Cat \$2000. [The ACSC states "Approximately six used envelopes are recorded...between Dec 1918 & Oct 1919". This is therefore the LRD by some five months]	

## COMMONWEALTH OF AUSTRALIA - Postal Stationery (continued)

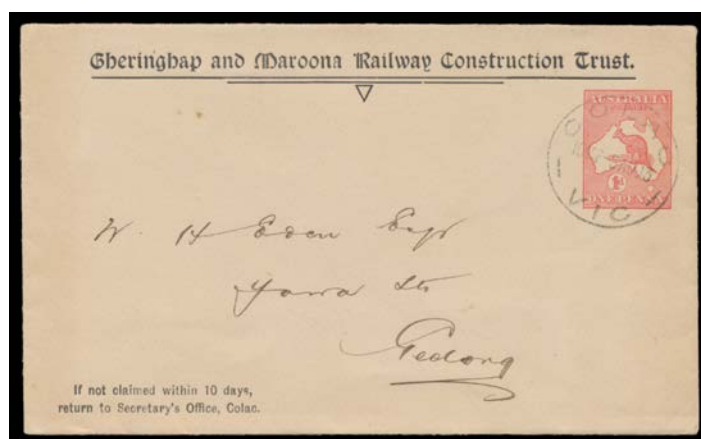
Lot Type Grading Description

Est \$A



Lot 118

- |     |    |   |  |     |
|-----|----|---|--|-----|
| 118 | PS | B | - 1918 Sideface 1d red with 'OS'-of-Dots + Sideface ½d green with Solid 'OS' ACSC #EO5 for Deputy Commissioner of Maternity Allowances, to Maryborough in 1919 from where redirected to Footscray, minor faults, Cat \$2000. | 600 |
|-----|----|---|--|-----|



Lot 119

- |     |    |   |  |     |
|-----|----|---|--|-----|
| 119 | PS | A | <b>ENVELOPES - STAMPED TO ORDER:</b> 1913 Kangaroo 1d Die 2 with 'Gheringhap and Maroona Railway Construction Trust' imprint at top, used at Colac. The only example we have seen for this user. | 100 |
| 120 | PS | C | - 1920 Star 1½d brown + Sideface ½d green ACSC #ES53 window envelope for Henry Berry (imprint on flap), minor spotting, Cat \$750. [Much scarcer than the similar Vacuum Oil emissions]          | 150 |



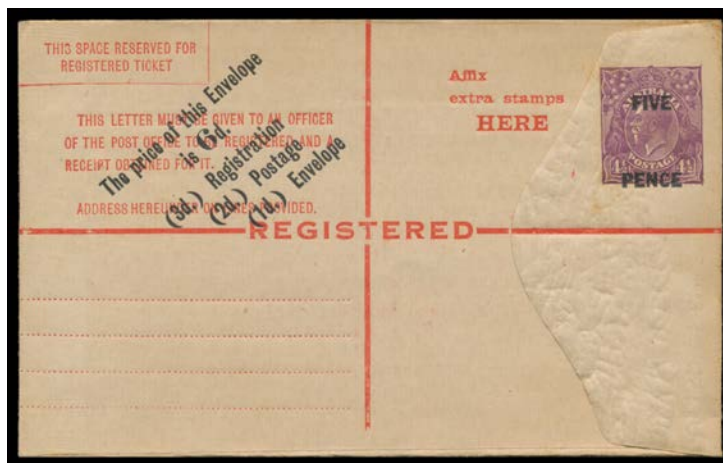
Lot 121

- |     |    |    |  |     |
|-----|----|----|--|-----|
| 121 | PS | A  | - 1920 Star 1½d brown + Sideface ½d green ACSC #ES53 front only with 'WARRNAMBOOL/12MR24/VIC.' cds, Cat \$750. Much scarcer than the window envelopes for Vacuum Oil. [Addressed to Ball & Welch, which was probably the user; unlisted in the ACSC]   | 200 |
| 122 | PS | A+ | <b>ENVELOPES - MILITARY:</b> 1916 (March) First Issue 1d with 'AUSTRALIAN IMPERIAL FORCE.' at the Base on White Stock ACSC ME1, unused, Cat \$300. Superb! [These envelopes were first made available from mid-March 1916, in Victoria & New South Wales only. They were sold in packs of five, for 5½d] | 150 |

## COMMONWEALTH OF AUSTRALIA - Postal Stationery (continued)

Lot Type Grading Description

Est \$A



## Lot 123

123	PS	A-	<b>REGISTRATION ENVELOPES:</b> KGV 'FIVE PENCE' on Sideface 4½d violet overprint ACSC #RE23, unused, couple of minor marks hardly detract. [The ACSC states "This is a rare envelope of which only a small number were revalued, presumably returns from post offices"]	500
124	PS	A	<b>WRAPPERS - STAMPED TO ORDER:</b> KGV 1d green Die III ACSC #WS13, Queen Mother 1d green #WS21, and QEII Embossed 2½d indigo #WS34 for the <i>Sydney Stock Exchange</i> , believed to also be the user of the other two wrappers, Cat \$550. (3)	250



## Lot 125

125	PS	A	- Queen Mother 1d green + KGVI 2d red ACSC #WS21 for <i>Nicholas Aspro</i> (no imprint: see article in <i>Postal Stationery</i> Nov 2015), Melbourne cds with illegible date, folds from having been used to wrap a small box, Cat \$1500. A remarkable item, being the only issue of its type. [This is <b>not</b> an uprated item. Because there was no KGVI 3d die, <i>John Ash</i> resorted to this 'doubleton' expedient. 6000 were supplied in 1938-39. Only a handful of complete wrappers are recorded. It is believed that the package contained pharmaceutical samples. <i>Mark Diserio's</i> example sold at the <i>Prestige</i> auction of 8.11.2013 for \$2760]	
			Only one other Australian postal stationery issue has the portraits of two monarchs: the KGV 1d+KGVI 1d green Stamped to Order Envelope ACSC #ES88.	1,500
126	PS	A	- 1958 KGVI 3d green large format (225mm wide) ACSC #WS30 with OHMS heading & Victorian <i>Education Department</i> imprint, printed 'Commercial Papers' at U/R, ½d Roo punctured 'VG' added tied 'ALEXANDRA' cds. The domestic commercial papers rate was 3½d up to 2oz]	200

COMMONWEALTH OF AUSTRALIA - Postal Stationery (continued)

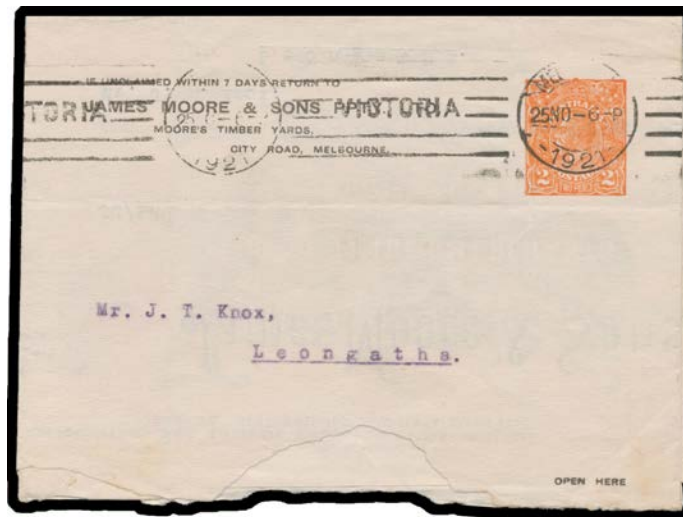
Lot Type Grading Description Est \$A



Lot 127

**127** PS A **LETTER SHEETS - OFFICIAL:** 1930 'TWO/PENCE' on Star with 'POSTAGE' 1½d scarlet ACSC #LS07 being a truancy notice for the *Victorian Education Department*, a couple of minor defects caused upon opening otherwise superb, Melbourne slogan cancel of 30SEP/1930, undercatalogued at \$1000. Rare. [The ACSC states "One example is recorded...dated 17.12.1930"]

750



Lot 128

**128** PS C **LETTER SHEETS - STAMPED TO ORDER:** c.1921 2d orange ACSC #LSS8 for *James Moore & Sons Timber Merchants* with imprint at U/L & illustrated banner within, roughly opened at the base, Cat \$2000. Rare. [The ACSC states "Only two complete examples have been seen"]

500