

Lot Type Grading Description

Est \$A

NEW SOUTH WALES - Postal History



Ex Lot 340

340 C B/C **Pre-stamp entires 1)** 1837 mourning entire to Scotland with almost fine undated 'LIVERPOOL/NSW' h/s; **2)** 1840 lengthy epistle to Paterson (no arrival b/s) with boxed 'SYDNEY/POST PAID' h/s; **3)** 1840 from India to Bathurst with boxed 'CALCUTTA/GPO/SHIPLETTER' d/s in red & 'MELBOURNE/NEW S WALES' transit, stained; **4)** 1846 to Sydney with boxed 'NEW CASTLE/POST PAID' h/s in red & 'NEWCASTLE' d/s; also **5)** van Diemen's Land internal to Campbell Town with second-type undated oval 'LAUNCESTON' h/s. **(5)**

800



Ex Lot 341

341 C **Interesting range of mostly pre-1901 covers** including 1/2d grey printed matter x2, 1866 Sydney town letter, 1867 2d pair on invoice apparently used as a wrapper to send a wedding ring & brooch!, 1883 2d on Victorian 'turned' OHMS lettersheet, 1897 to USA with Jubilee 2 1/2d strip of 4 & NZ 'PACKET BOAT' h/s, group to GB including 1881 with 6d x4 including *inter-panneau* pair, 1896 mourning cover with 7 1/2d on 6d, 1881 with 8d yellow, 1875 with 'NINEPENCE' on 10d & 1888 with 1/- black, 1885-90 five to USA with 'PAID ALL' h/s, illustrated advertising covers for *Bennett & Wood Bicycles*, *Callaghan & Son 'Good Boots'*, *Hotel Grand Central*, *Loyal Pride of the West Lodge*, *Nicholson & Son (Bundanoon)*, *T&G Mutual* and a gorgeous front for *Saxton & Binns Timber Merchants*, etc, condition variable but many are fine to very fine and attractive. **(56)**

750



Ex Lot 342

342 C/CL **Registered mail** including with 'REGISTERED' (6d) Imperf x2 (one a HUGE stamp but the 1/- alongside is badly damaged) & Perf x2, then to GB 1871 with 4d + 6d x2 tied by roller cancels & 1875 with 1/- carmine + 10d, 1883 with unusual rubber 'REGISTERED/SYDNEY' cds & 'CANBERRA' arrival b/s, 1898 *Messageries Maritimes* to Holland, 1904 to Hobart with 1d & 6d yellow-orange, etc, condition variable. **(25)**

800

343 C/CL B/C **1837-48 pre-stamp selection** comprising 1837 outer to "Goulburn Plains" rated "10" with fine crowned-oval; 1842 large-part entire docketed as being from New Zealand; 1845 OHMS to "Black Camp Creek/Dungog"; 1847 & 1848 OHMS town letters both with the embossed GPO seal, 'FREE' cds in red & boxed '6/O'CLOCK' h/s, heavy filing folds, and another fine embossing on small piece; also 1877 stampless entire endorsed "Post Office Ryde". **(6 + piece)**

750

NEW SOUTH WALES - Postal History (continued)

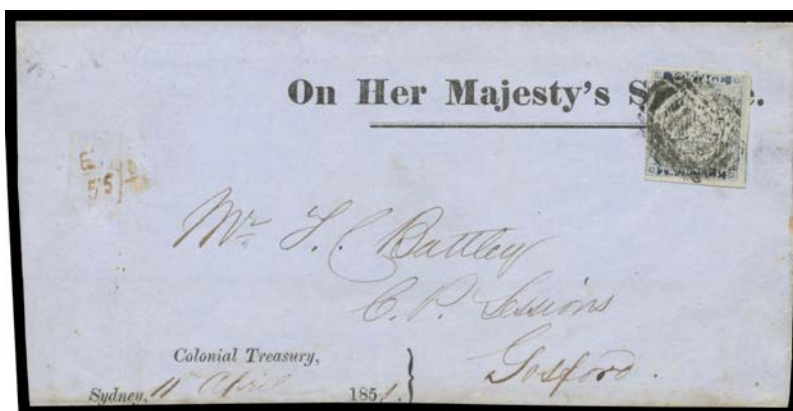
Lot Type Grading Description

Est \$A



Ex Lot 344

- 344** C **1850-53 group with Sydney View frankings** comprising **ONE PENNY Plate II (Clouds)** pair, margins good to large except at base where just clear to a little cut-into, fine BN '39' & 'COOMA' b/s; **TWO PENCE** various plates & printings solo frankings x8, three of the stamps with full margins but the covers are rather rough, cancels including superb '32' (rated R) & 'BERRIMA' b/s, light '35' & poor 'GOULBURN' b/s, and light BN '46' & 'GUNDAGAI' b/s; and **THREE PENCE** solo frankings x2 - one with full margins - to GB "p Salacen" or "p Neptune", and quadruple rate with yellow-green single & emerald-green strip of 3, margins at places; very mixed condition but good value at the estimate. [These have not been checked against *Ben Palmer's Census*] (12) 1,000



Lot 345

- 345** C B **1851 (Apr 11) OHMS large-part outer with Colonial Treasury** imprint at lower-left, to Gosford with rare franking of *Sydney View Plate V (Pearl in Fan) Vertically Laid Paper* 2d ultramarine SG 38 (margins close to large with a fragment of the unit at right, Cat £425 x2+ on cover) tied by Bars cancellation of Sydney (b/s), minor blemishes. Absent from *Ben Palmer's Census*. 500

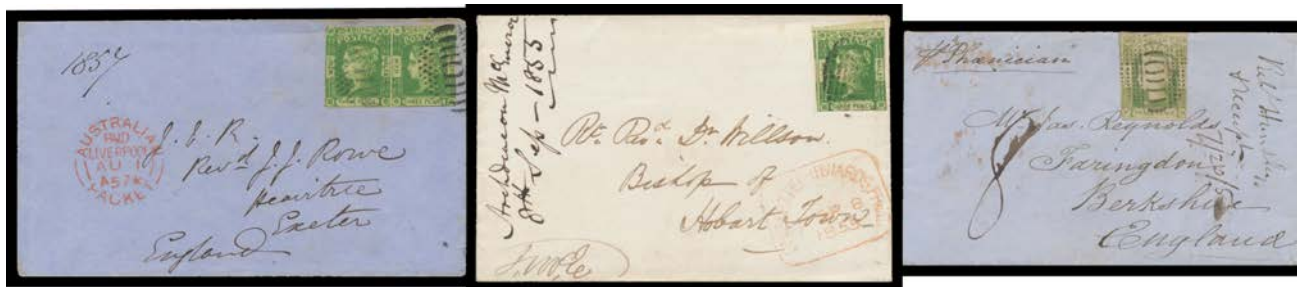


Lot 346

- 346** C B **1852 (July 10) town letter with very fine Laureates 1d scarlet** SG 46 (Cat £160 x2+ on cover) tied by bars cancel of Sydney, boxed '2 / O'CLOCK' h/s alongside, minor discolouration at base of the cover. 300

NEW SOUTH WALES - Postal History (continued)

Lot Type Grading Description Est \$A



Ex Lot 347

347 C 1852-57 group with **Laureate frankings** comprising 2d various plates x5 (one OHMS), then mail to GB with 2d + 3d x2 (one also curiously with 1d on the reverse), 3d x4, 6d x2 (one with 'WALLS' variety), also Wrmk '3' 3d solo to Hobart & to Scotland, and pairs to England or Scotland both with 'AUSTRALIAN/PAID/LIVERPOOL/=PACKET=' cds on the face & the first also with very fine '5' h/s, some are very attractive but most of the stamps have two or three margins & the overall condition is rather mixed, but still great value at the estimate. (18) 1,000



Lot 348

348 C B 1853 folded entire headed "Cattie" [Cattai Homestead] to "Potts Point Sydney" with **Laureates** 1d scarlet pair (even close margins except right-hand unit cut into at right) tied by BN '3' (rated RR) and 'WINDSOR/SE*4/1853/NEW S WALES' crowned-oval b/s, Sydney crowned-circle arrival b/s of next day, minor blemishes. 400



Lot 349

349 C B 1854 (Jan 17) town letter with rare franking of **Laureates** 1d orange-brown with *No Leaves to Right* of 'SOUTH' SG 49a (three margins & just shaved at left; Cat £850 x2+ on cover) tied by BN '55' clear of the variety, fine strike of the large 'NEWCASTLE/N S W' cds unusually at upper-left), minor ink-stains well clear of the stamp. 750



Ex Lot 350

NEW SOUTH WALES - Postal History (continued)

Lot	Type	Grading	Description	Est \$A
350	C/CL		1854-59 group with Imperf Diadem frankings comprising 1d town letter, 1d pair with Rays '23' of Wollongong, 1d pair on OHMS cover with <i>National Education Office</i> imprint, 2d solo frankings x4, pair to Rocky River & strip of 3 to Melbourne, 3d to Melbourne, 6d deep slate (very fine) & 6d blue-grey both to GB with '3' or '5' h/s in red, 6d x2 (one very fine) to GB, 1/- solo to GB with boxed 'TOO LATE' h/s, 1/- solo (very fine) to Holland - a rare destination - but with the address excised, 1d 2d & 6d to GB, and 3d + cut-to-shape 6d & 1/- to GB, some attractive items but condition of both the stamps & the covers is rather mixed. (18)	800

**Lot 351**

351	C	B	1856 cover front to Scotland "per Light of the Age" with Diadem 2d blue pair with wing margin at right and adjoining stamp below (all 4-margins) tied Sydney bars cancels, London 'PAID/1856/24MY24' transit d/s in red, large '3' in red for inland delivery fee payable by addressee and 'CR' h/s of the Caledonian Railway alongside.	200
-----	---	---	---	-----

**Lot 352**

352	C	B	1859 (July 14) outer to England "via Marseilles" with rare franking of Imperf Diadems 8d dull yellow-orange SG 98 (three good to large margins, a little cut-into at right; Cat £1300 but unpriced on cover by <i>Gibbons</i>) & 1d (margins at top & base) tied by poor but identifiable Rays '3' cancels of 'WINDSOR' (b/s), Sydney transit & 'HUDDERSFIELD' arrival b/s, redirected to "Fenay Lodge" with undated 'FENAY-BRIDGE' arrival in blue on the face. [The <i>Carrington</i> (<i>Mark Dankin</i>) registered cover with very fine 8d golden yellow sold in 2012 for \$12,650]	2,000
-----	---	---	--	-------

**Ex Lot 353**

353	C		1860-65 group with Perf Diadem frankings comprising 1d Maitland town letter, 1d pairs Bathurst-Darling Point & from Sydney to Penrith x2 & Picton, 6d greenish grey to Brisbane, 6d violet to Tasmania x2 & 1/- carmine to London, generally attractive with fine to very fine stamps, also 1883 OHMS with <i>Australian Museum</i> imprint & 'OS' 8d, a few stains; interest in the Sydney cancels. (10)	500
-----	---	--	--	-----

NEW SOUTH WALES - Postal History (continued)

Lot Type Grading Description

Est \$A



Lot 354

354	CL	C	1861 cover to "Little Billy Bong/Tarcutta" with rare franking of Perf 12 Diadems 2d with Major Retouch SG 136b x2 (Cat £900 x2+ on cover) & 'REGISTERED' (6d) - all with perfs trimmed on one side - tied by bars cancels of Sydney, oval 'REGISTERED/SYDNEY NSW' d/s in red, 'GUNDAGAI' transit on the face & 'TARCUTTA' arrival b/s, some soiling/staining mostly on the reverse.	500
355	CL	B	1863 OHMS cover with Surveyor-General's Office imprint at lower-left, scarce internal solo franking of Perf 13 8d red-orange SG 167a tied by very fine Sydney duplex, to Glebe but with no arrival b/s, vertical fold & minor aging at the base. ['O S' Overprints were introduced only in 1879]	250



Lot 356

356	C	A-	1864 (Feb 20) cover to Scotland "Via Marseilles" with a really attractive franking of Perf 13 5d bright blue-green pair tied by very fine Sydney duplex, very fine Glasgow arrival b/s of AP13/64, very minor blemishes. Ex Alvarado.	400
-----	---	----	---	-----



Lot 357

357	C	A-	1887 (Aug 29) OHMS cover with Medical Board of NSW imprint at lower-left, scarce franking of 'OS' Overprints 3d & 6d tied by Sydney duplex, Naples (7/10) & Italian 'AMBT BOLOGNA-CONTEBBA/No 2' TPO transit b/s & 'LEOPOLDSTADT-WIEN' arrival b/s. Very pretty.	300
-----	---	----	--	-----

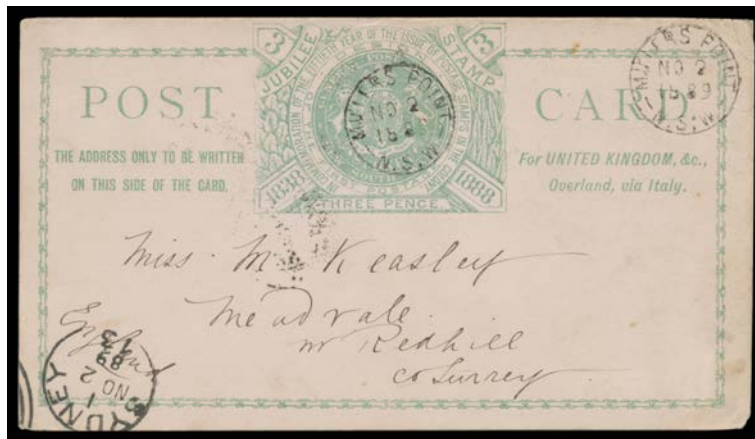
NEW SOUTH WALES - Postal History (continued)

Lot Type Grading Description Est \$A



Lot 358

358 C A- **1888** (Jan 12) *Staehelin & Co* advertising cover to Switzerland "Pr P&O steamer *Britania* via Brindisi" with DLR 1d & Diadems 8d tied by Sydney duplex, Swiss 'AMBULANT/No + 26' TPO transit b/s & very fine 'NEBIKON' arrival b/s. 300



Lot 359

359 PS B **1889** usage of 1888 Jubilee 3d green Postal Card inscribed 'For UNITED KINGDOM &c/Overland via Italy' to England with 'MILLERS POINT' cds paying the pre-UPU postcard contract rate, message headed on board "SS Chingtau/Sydney" concludes "...Expect to spend Xmas up in China", couple of bumped corners. [Very scarce used 'in-period' pre admission to the UPU on 1.10.1891] 400



Lot 360

360 PS B **1890** usage of 1888 Jubilee 2d blue postal card inscribed 'For UNITED KINGDOM &c/by the long Sea Route' to Germany with message headed on board "SMS Sophia, Jervis Bay", 1d Centennial added tied by Rays '357' and small part 'TOMERONG' cds alongside, taxed with Sydney 'T' inverted triangle cachet, Bavarian 'KB BAHNPOST' TPO d/s on face, arrival rated "3d/80" [pfennig] postage due, a few edge faults and aging marks. [The pre-UPU Europe 6d ship letter rate should have been paid as the 2d and 3d treaty postcard rates applied only to items sent to the UK] 400

361 PS A **1891** Centennial 1d violet Waratah Postal Card to Germany with 1d Centennial tied by 'THE EXCHANGE' duplex cancel, taxed with Sydney 'T' inverted triangle cachet, Bavarian 'KB BAHNPOST' TPO d/s on face, rated "4d/80" [pfennig] postage due in blue pencil on arrival. [The pre-UPU Europe 6d ship letter rate should have been paid as the 2d treaty postcard rate applied only to the United Kingdom] 200

362 PS A **1892** (Apr 7) use of 3d Registration Envelope to Cyprus with Allegorical 2½d tied by very fine 'THE EXCHANGE' duplex, Suez & Alexandria transits & 'LARNACA/MY17/92/CYPRUS' transit b/s. A scarce destination. 200

NEW SOUTH WALES - Postal History (continued)

Lot	Type	Grading	Description	Est \$A
363	PS	B	1893 usage of 1½d+1½d reply lettercard to "Grand Turk/Turks Islands/West Indies" with Sydney 'DE26/93' duplex cancel and lengthy personal message starting "This being Xmas Eve ...", New York transit b/s and 'TURKS ISLANDS/FE127/94' arrival d/s on face, unused reply portion attached, a few aging marks. Great destination.	250



Lot 364

364	C	B	- John A Kean, Oil & Color Merchant illustrated advertising cover showing 'New Regent House' shopfront on back, sent to France with Centennial 1d violet x3 tied Sydney 'JU27/93' cancels, taxed with 'T' inverted-triangle marking and boxed 'TOO LATE' cachet (later crossed out in blue pencil), French 'MODANE A PARIS/15AOUT/93' TPO d/s in red on face and pen-cancelled Postage Dues 30c black x2 affixed alongside, a few edge faults and aging marks.	400
-----	---	---	--	-----



Lot 365

365	C	B	1897 (June 10) double-rate cover to Canada "Per Warrimoo" with scarce solo franking of 8d Lyrebird tied by 'REGISTERED/SYDNEY NSW' cds, Vancouver transit & Toronto arrival b/s, minor soiling.	250
-----	---	---	---	-----



Lot 366

366	C	B	1898 (Oct 26) commercial cover from New Caledonia with 25c black/rose x2 & unusual '.../NOUMEA' cds, largely superb strike of the rare boxed 'DETAINED ON BOARD SHIP' h/s on the face & Sydney arrival b/s of OC31/98, vertical fold & ironed-out wrinkles. A rare & impressive marking. [In Sydney Views Nov 2016, Brian Peace records only three examples, used between 1900 & 1912. This cover is therefore the earliest recorded usage]	500
367	CL	B	1901 OHMS cover to England with very scarce solo franking of 8d Lyrebird tied by Sydney cds, superfluous 'POSTAGE PAID SYDNEY/NSW' cds also on the face, London transit (on the face) in red & 'HULL' arrival b/s, heavy vertical fold doesn't greatly detract. [A similar but very fine cover sold at a Sydney auction in 2007 for \$690]	250

NEW SOUTH WALES - Postal History (continued)

Lot	Type	Grading	Description	Est \$A
368	CL	B	1906 long cover to New Zealand with Arms 1d red and Commonwealth 9d brown & blue perf 12¼x12½ tied Sydney '26MY06' d/s paying five-times 2d per ½oz British Empire rate, 'WELLINGTON/30MY06/NZ' arrival b/s, couple of folds & minor edge faults not affecting stamps. The 9d was issued primarily for parcel and telegraphic use, and is difficult to find on correctly-rated commercial covers.	250