

Lot Type Grading Description

Est \$A

WORLD PICTURE POSTCARDS



Ex Lot 828

| | | | | |
|-----|---|--|--|-----|
| 828 | C | | Beautiful group of Ships including advertising cards for <i>Royal Mail Lines</i> x5, <i>Straits Steamship Co</i> x4, <i>P&O</i> x4 (plus pocket-book 1929 <i>Diary & Almanack</i>), <i>British India SN Co</i> x4 including 'Dunera', <i>Orient-Pacific</i> , <i>Henderson Line</i> , <i>Japanese Lines</i> x3 & <i>Dutch Lloyd</i> , also silks of 'HMT Northland' & for 'RMS Tunisian', <i>real photo</i> of passengers on <i>Oswestry Grange</i> 'In the Indian Ocean/Dec 27th 1906', & a few others; then a batch of modern Ships; unused. [See also Lots 185 & 190] (35 + moderns) | 600 |
| 829 | C | | Eclectic array with Glamour, Nudes, Cats, Royal Family, Humour, Lighthouses, Military etc, also a delightful album of Children including <i>Bonzo</i> x5, <i>Talma</i> 'New Coon in Town' set (?) of 6, etc, condition variable but many are fine to very fine. (500+) | 200 |
| 830 | C | | Interesting array with USA 1915 <i>Panama-Pacific Exposition</i> x7, South Africa including Zulu group & other native studies, Fiji including 'Cannibals' & many native studies, Egypt including beautiful chromo-lithos x14, a few Lebanon etc, condition variable but many are fine to very fine. (180 approx) | 300 |
| 831 | C | | Humour album of mostly <i>double entendre</i> cards including some really clever and funny ones, generally fine to very fine. (260 approx) | 100 |
| 832 | C | | Fauna large album of Animals, Birds & Zoos, mostly American with some postmark interest, condition variable. (250 approx) | 100 |



Ex Lot 833

| | | | | |
|-----|---|--|--|-----|
| 833 | C | | Large album of mostly Atlantic Islands with Azores, Madeira & Canary Islands but also some non-British West Indies plus Latin America, many better cards including Undivided Backs, some postmark/postal history interest including usages to Australia, condition variable but many are fine to very fine. (260 approx) | 500 |
|-----|---|--|--|-----|

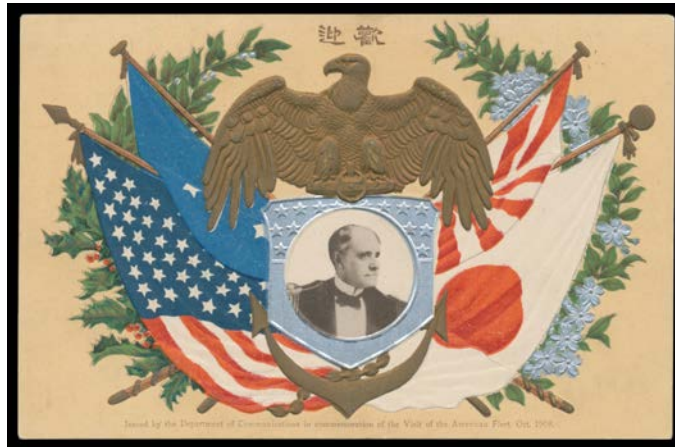


Ex Lot 834

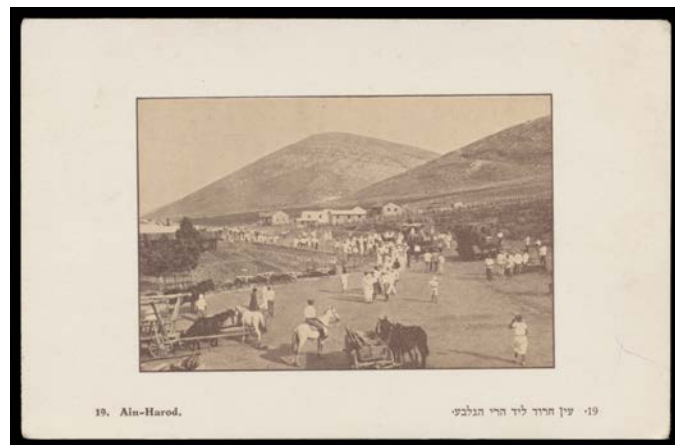
| | | | | |
|-----|-----|--|--|-----|
| 834 | C | | Superior bundle with New Zealand including Maori subjects & several <i>real photo</i> types, England including several superb views of Pembury, India including what is now Pakistan, a few East Asia & French Pacific, New Hebrides <i>real photo</i> type, etc, also Norwegian Arctic card with 13 vignettes of <i>Nansen</i> & members of his expedition, condition variable. (80 approx) | 350 |
| 835 | CPS | | Interesting batch from Australia & World with better subjects including Disasters, Post Offices, Stamp Cards, etc, also South Australia 1908 1d Fleet Postal Card unused, generally fine to very fine. (59) | 250 |

WORLD PICTURE POSTCARDS (continued)

| Lot | Type | Grading | Description | Est \$A |
|-----|------|---------|---|---------|
| 836 | C | | Box with about 200 topographicals from GB including many better London & Glasgow views, New Zealand, etc, noted French & English 'LL' types, Amiens Cathedral instalment cards set of 20, then an array of <i>Ladies Subjects</i> including Greetings, Actresses, Children, Cats, Dogs, Romance, Artist Cards, Humour, etc, condition variable but many are fine to very fine. (850+) | 200 |
| 837 | C/L | A | Large shoebox of mostly post-WWII tourist PPCs from Australia including many fold-out 'wallets', Britain, Europe etc plus some earlier cards, also Royalty etc plus ephemera including newspapers for major events, <i>SPC</i> wall poster, etc, generally very fine. (100s) | 100 |
| 838 | C | | Large tub with albums of Moderns including an album of Australian commemorations with a terrific group of <i>Cyclone Tracy</i> 'before & after' cards, also World cards mostly British & French with some 'LL' types noted & many better subjects, condition of the older cards is rather mixed. (many 100s) | 100 |
| 839 | C | A-/A+ | CANADA: Advertising cards c.1926 for <i>Hudson's Bay Co (Winnipeg)</i> , c.1938 for <i>Laura Secord Candies</i> (superb!), and c.1939 for <i>Montreal Pharmacy</i> x2 different (one used), (4) | 100 |
| 840 | C | | CHINA: Nine <i>real photo</i> types apparently from a British naval visit including 'Nankin from the Yangtze', Troops on Gangplank and Chinese Family in a Tiny Boat, etc, also <i>China Navigation Co</i> ship card for <i>Hongkong-Tientsin Line</i> & a few others. (14) | 150 |
| 841 | C | | GIBRALTAR: Album with all the usual views of the Rock plus many better subjects including streets, buildings, barracks, dockyards, etc, some <i>real photos</i> & lots of Undivided Backs, generally fine to very fine. (200 approx) | 200 |
| 842 | C | A/A- | GREAT BRITAIN: c.1902 'Months of the Year' <i>Art Nouveau</i> designs including astrological signs with Undivided Backs, very fine unused. Delightful set. (12) | 120 |

**Ex Lot 843**

| | | | | |
|------------|---|------|--|-----|
| 843 | C | A/A- | JAPAN: 1908 Visit of the American Fleet private issues x3 & <i>Department of Communications</i> x2, all unused; also two different 1905 passes for <i>British Naval Visit to Japan</i> . (7 items) | 150 |
|------------|---|------|--|-----|

**Ex Lot 844**

| | | | | |
|------------|---|--|---|-----|
| 844 | C | | MIDDLE EAST: Album of Holy Land/Palestine plus some Lebanon & Syria, some animated scenes & <i>real photo</i> types, panorama of Beirut, many attractive artist cards, generally fine to very fine. (108) | 300 |
|------------|---|--|---|-----|

WORLD PICTURE POSTCARDS (continued)

Lot Type Grading Description

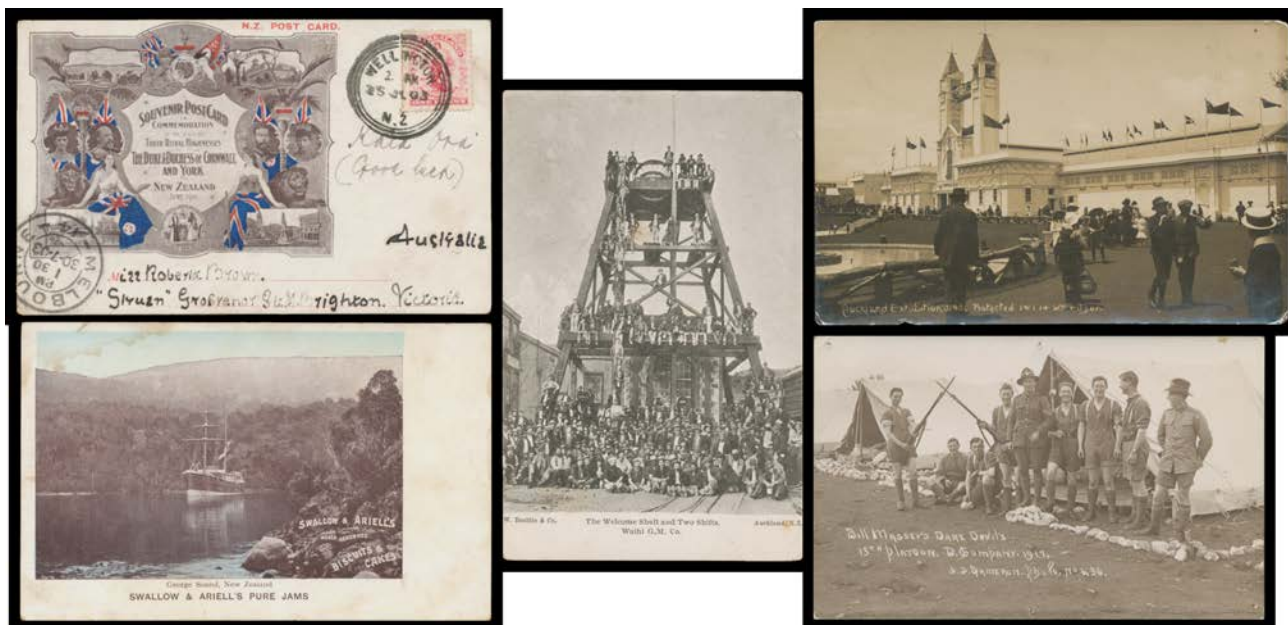
Est \$A



Ex Lot 845

845 C A/B **NEW GUINEA:** Seven *real photo* cards by EA Hawnt (Rabaul) including two of Native Women & three of Masked Dancers - one a terrific photo of them in canoes - also ten photos of 1937 Volcanic Eruption at Rabaul and aftermath plus a few others including Burial Site decorated with Skulls, all fine; then c.1929 folded brochure 'The Golden Islands' promoting migration to New Guinea (minor edge faults). An interesting group. **(21)**

200



Ex Lot 846

846 C **NEW ZEALAND:** Album with lots of better cards including Exhibitions Christchurch 1906 x6, Auckland 1914 x4 & Dunedin 1925, also 1901 Royal Visit, WWI military, Railways, Shipping, *Tourism & Health Resorts* chromolithos x5 etc, many *real photos* & Undivided Backs, etc, condition variable but many fine to very fine. **(180+)**

1,000



Ex Lot 847

847 C - Bulging album of mostly topographicals strong in Auckland, Christchurch & Dunedin but with many smaller towns & localities, many *real photos* & Undivided Backs, better subjects include Trams, Shipping & Streetscapes, etc, condition variable but many are fine to very fine. **(300 approx)**

750

WORLD PICTURE POSTCARDS (continued)

Lot Type Grading Description

Est \$A



Ex Lot 848

848 C - album of mostly topographicals featuring Napier, Nelson, Palmerston North, Rotorua & Wellington, etc, condition variable but many are fine to very fine. **(300 approx)**

750



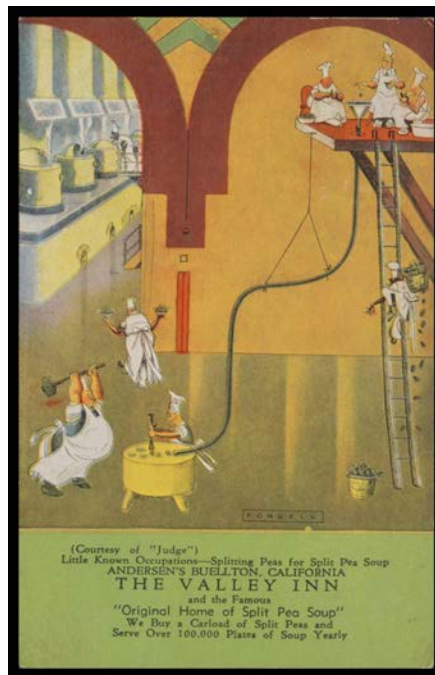
Ex Lot 849

849 C - Collection of Maori subjects mostly portraits many in native dress & some with face tattoos, also hakas, poi dances, whares & villages, etc, condition variable but many are fine to very fine. **(120 approx)**

500

850 C B - 1908 Visit of the American Fleet C&M 'Wellesley Street, Auckland...' plus flags & allegorical figures, used under cover.

60



Ex Lot 851

851 C **UNITED STATES:** 1906-c.1926 advertising cards for Remington Typewriter (used, rounded corners), Armour & Co (Abattoir), Flanders 20 Pathfinder (Automobile), Rick & Hutchins ("Educators"), Welch Bros (Haberdashery) x4 different used, Andersen's Green Pea Soup & Puerto Rico El Toro Cigars (creased); also PPC of biplane with photo & facsimile signature of "Billy Parker", Columbia Picture fan card of Humphrey Bogart, and Singer Sewing Machine trade cards x4, condition variable. **(16)**

300