

Lot Type Grading Description

Est \$A

**COMMONWEALTH OF AUSTRALIA - Kangaroos - First Watermark**



Lot 20

|    |    |   |   |       |
|----|----|---|---|-------|
| 20 | PS | B | <p>1/2d green &amp; 1d red tied to 1d Kangaroo Die II Letter Card 'THE TWO BROTHERS/QUEENSLAND' by two strikes of the recut 'CARLTON/VICTORIA - 538' duplex of JA14/13, the cancel on the 1/2d with the datehead off the card but the 1d clearly dated, the message within is headed "Brunswick 13 Januar 1913" &amp; states - translated from German - "...This is all of the new stamps that have been issued so far", the card with some 'suntanning' mostly on the reverse, Cat \$17,500 as a <b>First Day Cover of the Halfpenny Kangaroo. An important recent discovery.</b> [Our vendor has requested that we offer this item at what we consider to be a VERY conservative estimate]</p> <p>The ACSC states "The earliest recorded usage is on a postcard to the USA cancelled Melbourne 14 January 1913". This item is therefore only the second recorded FDC. By comparison, for the 1d red at least eleven FDCs have been recorded, Cat \$15,000. <b>NB:</b> the ACSC gives the ERD for a Die II Letter Card as 10th February 1914: this is <b>almost a month earlier.</b> (The ERD for a Die I issue is 10.1.1914.)</p> | 1,000 |
|----|----|---|---|-------|

**COMMONWEALTH OF AUSTRALIA - Decimal Issues**

|    |    |   |   |     |
|----|----|---|---|-----|
| 80 | PS | A | Large carton with packets of mostly unused PSEs. Postage opportunity. (Qty) | 100 |
|----|----|---|---|-----|

**COMMONWEALTH OF AUSTRALIA - Postal Stationery**

|     |    |     |   |     |
|-----|----|-----|---|-----|
| 98  | PS |     | <p><b>POSTAL CARDS:</b> 1911 Fullface 1d exhibit pages with P1 the three different <i>Re-Entries of the Banner</i> unused (Cat \$500 each), &amp; uprated with SAust 1/2d to Germany, Coronation types x4 different one uprated with SAust 1/2d to Germany, New Admonition P23 uprated with SA 1/2d to Austria and uprated with 1/2d Roo to Belgium, Hungary &amp; Italy, and a few later issues, generally fine to very fine. (18)</p>   | 500 |
| 99  | PS | A/B | <p><b>LETTER CARDS:</b> 1911-12 Fullface 1d issues first line ending '...any' on Green and on Flimsy Off-White; first line ending '...to' on various stocks x9 different views, 1d+1d Reply Letter Card x2 different view combinations, 1917 'REPLY' Barred-Out Zig Zag Roulette Outer-Half, and Perf 12 1/2 Inner-Half x3 different views (one trimmed in the left-hand margin), some minor blemishes but generally fine to very fine unused (16)</p>  | 600 |
| 100 | PS | A/B | <p>- 1911-12 Fullface 1d issues first line ending '...any' on Flimsy Off-White x3 different views, first line ending '...to' on various stocks x14 views - a couple duplicated but in different colours - including 'HUON RIVER' &amp; 'SHEEP STATION/WIMMERA SA' and a few scarce colours, condition variable but all are presentable used (no folds or filing holes) &amp; some have full margins, a couple are CTO. <b>[NB:</b> as a general rule, all scenic issues are scarcer used than unused, a fact that is not reflected in their respective catalogue values] (16)</p> | 400 |



Lot 101

|     |    |    |  |     |
|-----|----|----|--|-----|
| 101 | PS | A- | - 1911 Fullface 1d first line ending '...any' on Pale Green Stock ACSC #LC1 'MOSMAN'S BAY/SYDNEY NSW' (Ferry in the Distance) in sepia, minor blemishes, unused, Cat \$400.                    | 150 |
| 102 | PS | A+ | - 1911 Fullface 1d first line ending '...any' on Pale Green Stock ACSC #LC1 'MOSMAN'S BAY/SYDNEY NSW' (Ferry in the Distance) in sepia, used to "Jerusalem/Near Kadina/SA", Cat \$200. Superb! | 100 |
| 103 | PS | A+ | - 1911 Fullface 1d first line ending '...any' on Pale Green Stock ACSC #LC1 'ZOOLOGICAL GARDENS/PERTH WA' in sepia, unused, Cat \$200. Superb!   | 100 |
| 104 | PS | A  | - 1911 Fullface 1d first line ending '...any' on Off-White Flimsy Stock ACSC #LC3 'LAUNCESTON/TAS' in dull purple, unused, Cat \$300.  | 150 |

**COMMONWEALTH OF AUSTRALIA - Postal Stationery (continued)**

| Lot | Type | Grading | Description  | Est \$A |
|-----|------|---------|--|---------|
| 105 | PS   | A-      | - 1911 Fullface 1d first line ending '...any' on Off-White Flimsy Stock ACSC #LC3 'QUEEN'S GARDENS/PERTH WA' in dull lilac, unused, Cat \$300.   | 100     |
| 106 | PS   | A-      | - 1911 Fullface 1d first line ending '...any' on Off-White Flimsy Stock ACSC #LC3 'ZOOLOGICAL GARDENS/PERTH WA' in blue-grey, unused, Cat \$300. | 100     |



**Lot 107**

|            |    |   |   |     |
|------------|----|---|---|-----|
| <b>107</b> | PS | B | - 1911 Fullface 1d first line ending '...any' on <b>Ivory Surfaced Stock</b> ACSC #LC4 'SHEEP STATION/WIMMERA SA' ( <b>error</b> for Victoria), used to GB, minor blemishes, Cat \$400. Very scarce view, from a small print-run. | 250 |
|------------|----|---|---|-----|



**Lot 108**

|            |    |   |   |     |
|------------|----|---|---|-----|
| <b>108</b> | PS | C | - 1911 Fullface 1d first line ending '...any' <b>Rouletted</b> ACSC #LC5 'MOSMAN'S BAY/SYDNEY NSW' (Ferry in Distance), small corner selvedge missing & the view side a bit faded, Cat \$1000. The rouletted cards are very scarce. | 250 |
|------------|----|---|---|-----|



**Lot 109**

|            |    |    |   |     |
|------------|----|----|---|-----|
| <b>109</b> | PS | A  | - 1911 Fullface 1d first line ending '...any' <b>Rouletted</b> ACSC #LC5 'ZOOLOGICAL GARDENS/PERTH WA' in red-brown, slight misfold, very fine local usage but uncanceled, Cat \$600.               | 400 |
| 110        | PS | A- | - 1911 Fullface 1d <b>first line ending '...to'</b> on <b>Grey Stock</b> ACSC #LC10 'HUON RIVER/TASMANIA' in blue, unused, Cat \$400. [This was a substituted view, in use for only a short period] | 150 |

COMMONWEALTH OF AUSTRALIA - Postal Stationery (continued)

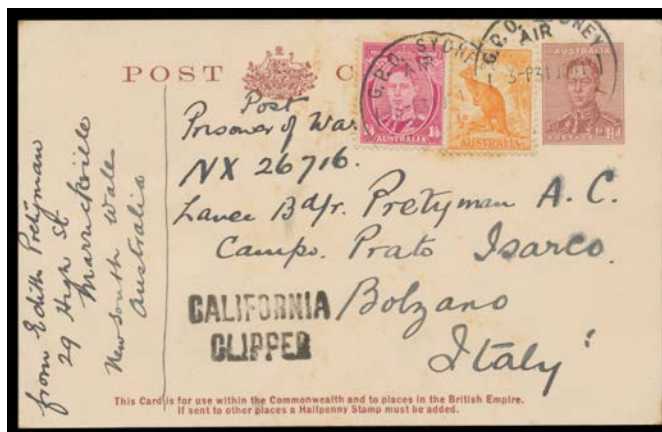
Lot Type Grading Description Est \$A



Ex Lot 111

|     |    |      |  |     |
|-----|----|------|--|-----|
| 111 | PS | A/A- | - 1911 Fullface 1d first line ending '...to' on Thick White Stock (Off-White Inside) ACSC #LC11 eight different views in six different colours, unused, Cat \$1200. (8)    | 400 |
| 112 | PS | A/A- | - 1911 Fullface 1d first line ending '...to' on Thick White Stock (Buff Inside) ACSC #LC12 four different views in four different colours, unused, Cat \$700. (4)          | 240 |
| 113 | PS | A    | - 1911 1d+1d Reply Letter Card ACSC #LC13 ('ZOO, ADELAIDE' & 'ALBERT BRIDGE/QUEENSLAND'), unusually fine & intact, Cat \$300. [The scarcest of the five view combinations] | 150 |

COMMONWEALTH OF AUSTRALIA - Postal History



Ex Lot 138

|     |     |      |   |     |
|-----|-----|------|---|-----|
| 138 | CPS | A/A- | Selection with used scenic Letter Cards 1d Roo x3 & KGV 1d x2, WWI Service Suspended cover to Singapore, uprated 1½d Postal Card by air to POW in Italy at scarce 1/6d Clipper rate, and a few others. (10) | 300 |
|-----|-----|------|---|-----|



Lot 149

|     |    |       |  |     |
|-----|----|-------|--|-----|
| 149 | PS | A     | 1912 social usage of Fullface 1d Letter Card 'SETTLER'S HOME' - margins intact - uprated with Queensland 1d for late fee tied by Qld TPO cds. Unusual domestic combination franking. | 200 |
| 150 | PS | A+/A- | - usages of Fullface 1d Letter Cards 'MOSMAN BAY...' (Ferry in Mid-Distance) & 'LOG TRAIN...' both uprated with South Australian ½d & 1d, the first is superb but philatelic. (2)    | 250 |



Lot Type Grading Description

Est \$A

**AUSTRALIAN PICTURE POSTCARDS**

See also World Postcards - Lots 828 to 838 - for mixed lots including other Australian cards.

189 CPS **Mixed bag** with a few better cards from Victoria & NSW (including Post Office 1d Postal Card 'GOVETT'S LEAP', very scarce), condition mixed. (31) 100



Ex Lot 190

190 C **1908 Visit of the American Great White Fleet** collection with many American cards of ships of the Fleet & three different with local overprints for ANA Sewing Machines, Victorian Government issues, processions in Sydney & Melbourne, coloured illustrations, Postal Stationery Victoria 1d used & 1½d unused & very fine unused and South Australia 1d unused, plus the unstamped issue 'TO/SYDNEY' used to USA from a sailor quarantined aboard ship (very rare but the stamp has been neatly removed) & 'TO/MELBOURNE' unused, etc, condition variable. A very desirable lot. (80) 2,000



Ex Lot 191

191 C A/A- - WTP six different coloured illustrations, three unused, two postally used & one used under cover. Beautiful cards. [A full set?] (6) 250

**QUEENSLAND - Postal Stationery**

433 PS A+ **POSTAL CARDS:** 1910 Scenic Issue 1d HG 19a 'KAMERUNGA STATE NURSERY...!', unused. Superb! [One of the scarcer views] 150

**NEW GUINEA - German (Deutsch) New Guinea**



Lot 919

919 PS C **1899** (Dec 25) commercial usage to Schleswig of Queensland 1d Postal Card ('Arrowroot Field...') with the message headed "Bismarck Archipel/25XII199", ½d stamp removed & replaced at upper-left with German 5pf Mi M46c tied by one of two strikes of the 'KAIS DEUTSCHE/MARINE/SCHIFFSPOST/No 7' cds used aboard SMS 'Möwe', 'BRUNSBUTTELER-/HAFEN' arrival cds on the face, rather aged & spotty still an extraordinary & very rare usage. [Illustrated in 'Papua New Guinea Calling' (Dec 2015)] 500