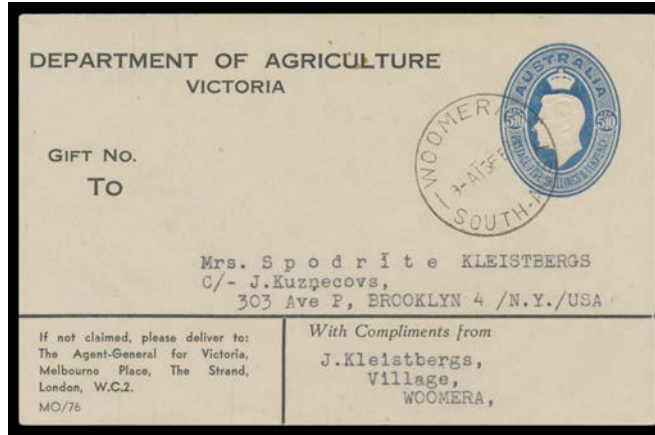


Lot Type Grading Description

Est \$A

COMMONWEALTH OF AUSTRALIA - Postal History



Lot 174

174 PS A+ **FOOD PARCEL LABELS:** 1946 5/10d blue for Victoria's *Department of Agriculture* ACSC #PL4B complete label, philatelic usage at Woomera in 1956, most unusually to the United States, Cat \$1500. Superb!

500