

Lot Type Grading Description

Est \$A

COMMONWEALTH OF AUSTRALIA - Postal Stationery - Envelopes (Stamped to Order)

This class of Postal Stationery is also called by the less-accurate expression "Printed to Private Order" (PTPO). [See also Lots 766 and 767]



Ex Lot 204

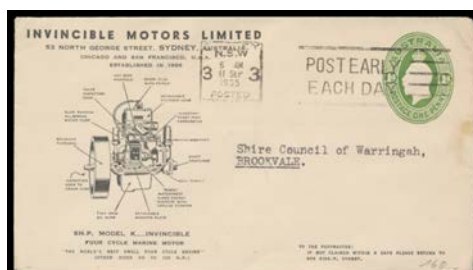
204 PS **Useful group** with Kangaroo 1d for *H Mathews & Co* uprated to Germany, 1d red Die 2 for *S Cooke* (no flap), Star 1/2d, 1/2d+1d, 1d+1/2d long OHMS window envelope (faults), 1d violet for *Harry Shelley* (Sydney; unrecorded user), 1d green with all-over advert on reverse for *AW Sandford & Co* (Adelaide), 1 1/2d brown OHMS for *Sydney Sewerage Board*, 1 1/2d red-brown for *Velvet Soap* (ERU 7JA/1922), 2d violet for *John Paton* (long envelope, folds), 2d orange for *Brooks Robinson* (ERU 27OC20) and for *Government Chalet Mount Buffalo* with 'MT BUFFALO' cds (superb!), Star with 'POSTAGE' 2d orange x2, 'TWO/PENCE' on KGV Oval 1 1/2d for *Dennys Lascelles Ltd*, KGV Oval 1d brown for *Defence Canteens* x4, 2d deep mauve (uprated for airmail to WA) & 3d (very scarce non-uprated usage), QEII 5d indigo with *Strong Offset on Reverse* & 5d light blue with Postage Due 3d block of 4, a few Decimal issues, etc, a few nice usages, condition variable but most are fine to very fine. **(63)** 1,250



Ex Lot 205

205 PS **Unused selection** comprising Sideface 1d red for *Vacuum Oil* (minor faults), Star 1/2d for an unknown user (flap stuck & minor blemishes) & 1 1/2d black-brown for *White Mercantile* (light vertical fold), Star with 'POSTAGE' 1 1/2d red for *Broken Hill South* & 2d red for *Civil Service Co-Op* (blemishes), KGV Oval 1d for *Medallion Saline* and 2d for *Texas Co* (light vertical fold) & *Victorian Education Department*, KGV 1d for *William Adams & Co* (illustrated for *Wolf Electric Tools*), 3d for *McLaren & Co* and 3 1/2d for *National Bag Co*, QEII Large Dies 3d for unknown user, QEII Small Dies 5d indigo for *Howard Electrical* & 5d light blue for unknown user, fine to very fine, Cat \$2175. A very scarce group. **(14)** 800

206 PS **Illustrated advertising envelopes** comprising Star 1d red for *Farmer & Co* (roughly opened), Star with 'POSTAGE' 2d red for *Anthony Horder*, 1 1/2d red for *Resch's Brewery*, 1d green for *Clutterbuck Farm Machinery* and *Perdriau Tyres*, KGV Oval 1d for *Kitchen's Soap*, *Caterpillar Tractors* and *Barnet Tyres*, and 2d for *Cull & Son Leather Merchants* (uprated to USA), KGV 2d for *Lister Separators*, 3d for *Condor Lamps* & 3 1/2d for *CIC Insurance*, mostly fine to very fine. **(12)** 300



Ex Lot 207

207 PS **Handy selection** including Sideface 1d for *Vacuum Oil*, Star 1/2d for *Lutheran Publishing*, 1/2d+1d ACSC #ES27 unused (addressed) & used (toning), KGV Oval 1d illustrated for *Invincible Motors*, KGV 1 1/2d illustrated for *Mobil* & 2 1/2d OHMS (unused) etc, also three with 'OS'-in-the-Die, condition variable. **(36)** 400

COMMONWEALTH OF AUSTRALIA - Postal Stationery - Envelopes (Stamped to Order) (continued)

Lot Type Grading Description

Est \$A



Ex Lot 208

- 208** PS **Victorian municipal users** comprising 1d Roo for *Shire of Charlton* (a little aged; with enclosure), Star 1d for *Shire of East Loddon*, 1½d black-brown for *City of Prahran* (soiled), 1½d brown Die 2 for *Shire of Marong* (address erased) & Die 3 for *Shire of Minhamite*, Star with 'POSTAGE' 1d violet (unusually pale shade) for *Shire of Minhamite*, 2d red for *Shire of Rosedale*, 1d green for *Shire of Heytesbury* (opened-out) & 'THREE-HALFPENCE' on 2d red for *Shire of Heidelberg* (small fault), KGV Oval 1d for *City of Mordialloc* & 2d for *Borough of Shepparton*, KGV 1d for *Shire of Colac* (unused) & 4c for *City of Box Hill* (unused); also KGV 1½d green Postal Card for *Shire of Eltham* (superb unused). Scarce group. (14)

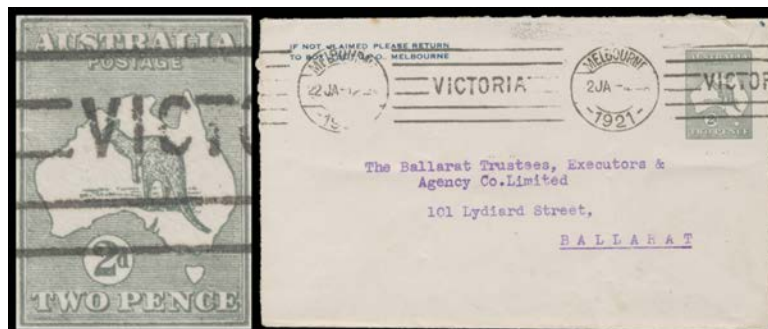
500



Lot 209

- 209** PS A **1913 Kangaroo** ½d green ACSC #ES1 on blue stock for *Shire of Colac*, unused, Cat \$400.

250



Lot 210

- 210** PS C - 2d grey Die 2A ACSC #ES6 for *Henry Berry & Co*, used in 1921, two vertical folds & opened-out a bit roughly but clear of the stamp, Cat \$1000. [The ACSC states there were two periods of 2d grey issuance, until May 1916 and from June 1917, and suggests that all from the second period will be Die I impressions, which is refuted by this example]

300



Lot 211

- 211** PS B **1916-22 Star without 'POSTAGE'** 1d red Die 2 for *S Cooke Pty Ltd* local usage at Melbourne 24JE16, minor blemishes, Cat \$50+-. [The ACSC states "It is believed the first orders were on 27 June 1916". This usage is three days before that date & may well represent a previously unrecognised **First Day of Issue**]

250

COMMONWEALTH OF AUSTRALIA - Postal Stationery - Envelopes (Stamped to Order) (continued)

Lot Type Grading Description

Est \$A



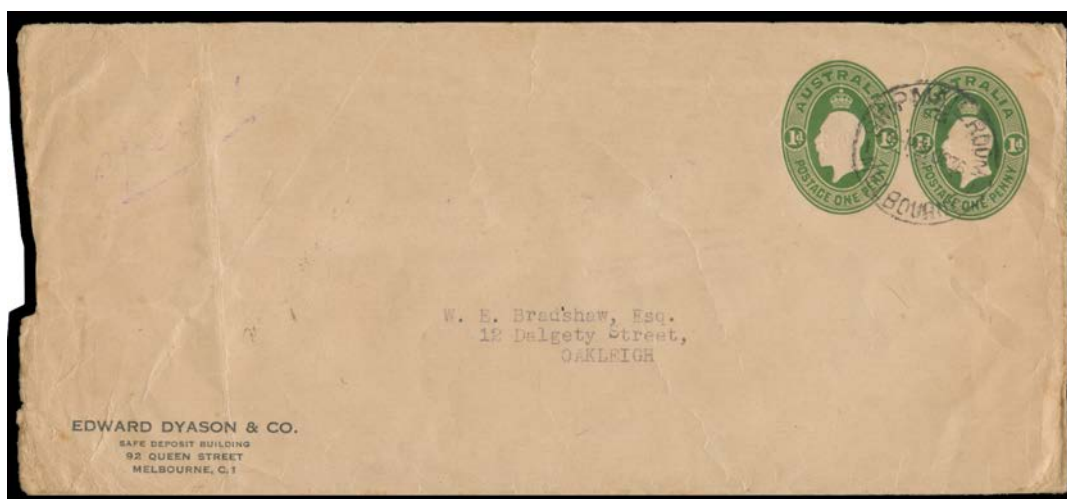
Lot 212

212	PS	B	- 1d red Die I + Sideface 1/2d green ACSC #ES36 uprated with 1/2d green & 2d orange tied by 'ARARAT/2FE22/VIC' to Adelaide, small stain between the two impressions, Cat \$3000. Rare. [The ACSC states that one unused and four used examples are recorded & that the total printing of ES16 & 36 combined was a mere 150 envelopes]	1,000
213	PS	A	- 1 1/2d brown Die 3 ACSC #ES49 for Melbourne & Metropolitan Board of Works with the Embossing Misplaced on an Angle, 'FINISH THE JOB/BUY PEACE BONDS' slogan cancel.	100
214	PS	B	- 1 1/2d black-brown Die 3 + Sideface 1/2d green ACSC #ES53 for Vacuum Oil Co, discolouration on reverse, Cat \$750.	250
215	PS	A-	1921-28 Star with 'POSTAGE' 1d violet ACSC #ES41 with printed address of the British Australian Wool Realisation Association, minor fold at base, unused, Cat \$400. [Most examples have significant folds/creases]	200



Lot 216

216	PS	C	- 1d green+1/2d orange with No 'POSTAGE' ACSC #ES44 for Berlei Ltd with printed slogan 'BE AUSTRALIAN! BUY AUSTRALIAN GOODS' at base and Sydney Krag machine cancel with 'ALWAYS ASK FOR/AUSTRALIAN PRODUCTS' slogan, small faults at left & a bit aged, Cat \$3000. [The ACSC states "at least six envelopes are recorded"]	750
217	PS	A	1928-37 KGV Oval 1d green ACSC #ES64 window envelope for MacRobertson Confectionery with 'Max-Mints' illustration, Adelaide slogan cancel.	200 ^T



Lot 218

218	PS	B	- 1d+1d ACSC #ES66 for Edward Dyason & Co, used at Melbourne in 1936, irregular opening & flap removed at left, Cat \$1000. Unrecorded user.	350
-----	----	---	---	-----

COMMONWEALTH OF AUSTRALIA - Postal Stationery - Envelopes (Stamped to Order) (continued)

Lot Type Grading Description

Est \$A



Lot 219

219	PS	B	- 'TWO/PENCE' on 1d green ACSC #ES67 with printed address of <i>Shell (Sydney)</i> front only with opening fault at lower-right, Cat \$1500. [The ACSC states that only one unused & three used examples are recorded]	250
------------	----	---	--	-----



Ex Lot 220

220	PS	B	- 1937-51 KGVI Oval 1d green ACSC #ES75 with 'AUSTRALIAN/DEFENCE/CANTEENS' within outline map at upper-left and another example with the Map Omitted used at 'MIL PO BATHURST', opened a bit roughly at lower-right. (2)	200
------------	----	---	--	-----



Lot 221

221	PS	B	- 1d brown ACSC #ES77 with 'AUSTRALIAN/DEFENCE/CANTEENS' within outline map at upper-left, unused, minor blemishes & the flap stuck, unused, Cat \$500. Very scarce.	250
222	PS	A-	- 2d green ACSC #ES85 for an unknown user, minor stains from the "window" adhesive, unused, Cat \$400. [The ACSC states that only two unused examples are recorded]	250
223	PS	A	- 3d red ACSC #ES88 for <i>Sidney Cooke (Melbourne)</i> , unused, Cat \$400. [The ACSC states that only two unused examples are recorded]	250
224	PS	A	- 1960 QEII 5d light blue with <i>Albino Embossing</i> ACSC #ES98c for <i>Dennys Lascelles Wool Brokers</i> , used in 1964 at Horsham, Cat \$250 unused; unpriced used.	100