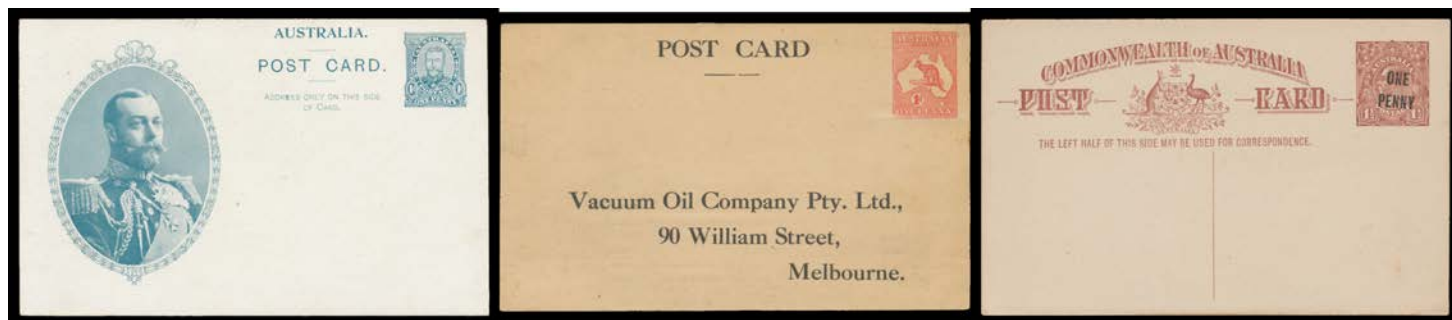


Lot Type Grading Description

Est \$A

COMMONWEALTH OF AUSTRALIA - Postal Stationery - Postal Cards**Ex Lot 243**

243 PS Useful group with Coronation 1d unused x3 different & used (with brief message dated "22.6.11": Coronation Day), Victorian Scenes unused x4 different & used in Ceylon to New Zealand (most unusual), KGV 1d red on white used & on buff unused & used uprated with Victoria 1/2d, 1 1/2d brown #P51 for *Bendigo Golf Club*, 1 1/2d brown with *White Wattle Flaw at U/R* #P52j, 1 1/2d green with *Broken Rule Left of 'POST'* #P53f used to Holland, 2d scarlet unused (a bit spotty) & CTO, 1d violet *No Top to Crown* #P56(2)f unused, 'ONE/PENNY' Surcharges on 1 1/2d brown #P58 & 1 1/2d green #P60 both unused, 1d green Die III with 'OS/NSW' puncture #P64e, etc, also **Stamped to Order** Kangaroo 1d for *Vacuum Oil Co* unused, KGV Oval 1d green for *Evangelical Lutheran Synod* & KGV Oval 1 1/2d for *Department of Immigration*, and **Solid 'OS'-in-the-Die** 1d green Die I x2 (one with 'THREE/HALFPENCE' Surcharge) both unused; condition variable but generally fine to very fine. (33)

1,500

**Ex Lot 244**

244 PS Mostly unused selection with Fullface 1d ACSC #P1 & P23 x2, Coronation 1d Prince (used), Victorian Scenes 'SPRING ST' (used), Kangaroo 1d with 'OHMS' above Stamp, Sideface 1d Die 1 #P27 x4 (two used), #P28 x2 & Die 2 #P28d, 1 1/2d brown with Footer & with Footer Removed, 2d scarlet CTO, 1d violet, 'THREE/HALFPENCE' on 1d Die 3, etc, also **Stamped to Order** Sideface 1/2d ACSC #PS5 for *Department of Defence* (used, minor blemishes) & KGV Oval 1d green (creased, used), generally fine to very fine, Cat \$3500 approximately. (38)

850

**Ex Lot 245**

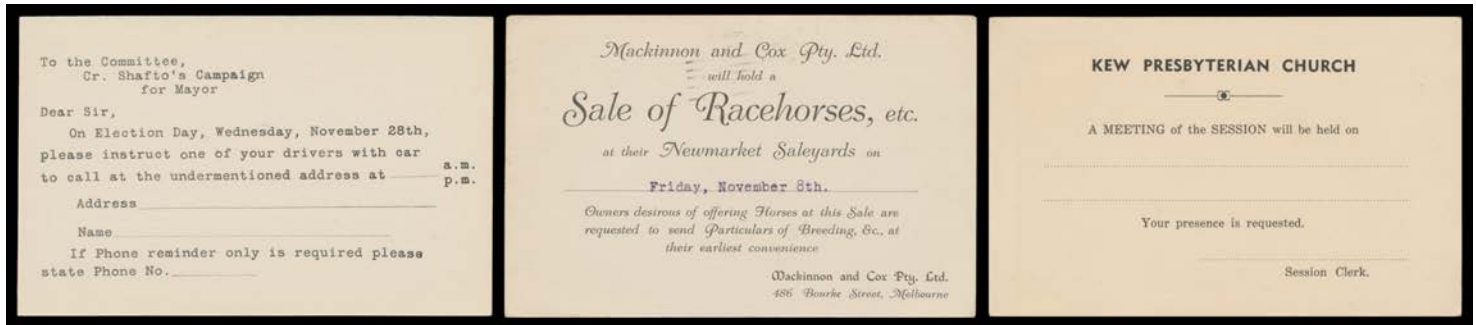
245 PS A/B Selection of better used cards comprising Fullface 1d ACSC #P23 with d/s of AP1/13 corrected to MY1/13 & another with drawing of two dogs on the reverse (soiled), Sideface 1d Die 2 #P28da, 1 1/2d brown #P51 used to GB Sweden or Switzerland (with 'CONSULAT DE SUISSE/BRISBANE' cachet on the reverse), 1 1/2d green with Footnote #P54, 1d violet #P56(2) used locally & to UK, KGV 2 1/2d #P73 uprated to Germany & 3d green uprated to the USA, plus **Stamped to Order** with 'OHMS' Headings on KGV Oval 1d green #PS23, KGV 1d green #PS25 & 1 1/2d green #PS29, fine to very fine, Cat \$1400. (14)

400

COMMONWEALTH OF AUSTRALIA - Postal Stationery - Postal Cards (continued)

Lot Type Grading Description

Est \$A

**Ex Lot 246**

246 PS **Advertising group** with Fullface 1d ACSC #P1 for *Fauldings*, 1d Roo for *Hall & Sons* (unused), KGV 1d #P27 for *Metropolitan Fire Brigade* & Die II for *Daily News (Perth)*, #P28d for *Kapunda Technical School* (unused), 1½d brown & 1d violet both punctured 'OS/NSW' for *Sydney Harbour Trust*, 1d green #64 for *Mayor Shafto's Campaign (Perth)* (unused) & for *Mackinnon & Cox 'Sale of Racehorses'*, 1½d brown #P68 for *Kew Presbyterian Church* (unused), fine to very fine. (10)

350

**Ex Lot 247**

247 PS **Annotated collection** with unused Fullface 1d ACSC #P1 x2 (one a deep dull shade that may be a proof?) & With Admonition #P23, KGV Sideface 1d red #P27 P28 & 28da, 1½d green x2 (one with *Broken Line to Left of 'POST'*), 2d scarlet (CTO), 1d violet x2, 'ONE/PENNY' Surcharges #P58 59 & 60, 1d green Die 1 #P61, 1½d brown on *Very Thin Stock with No Stop after 'added'* #P68(2)d, QE 1d+1d #P71 x2, etc, and 'OS' 1d 'PO6 & 1½d on 1d #PO9, used including Victoria Scenes 'SPRING ST' & KGV 1½d green #P54, etc, 'SPECIMEN' Overprints on KGVI 3d & 4d on 3d, generally very fine, Cat \$5000+. (53)

1,000

**Lot 248**

248 PS A **1911 Fullface 'ADDRESS ONLY...'** 1d with Underlined 'OHMS' Overprint Above the Header ACSC #P1ea, handwritten message for *South Australian Department of Mines*, used, Cat \$500. Rare.

300

COMMONWEALTH OF AUSTRALIA - Postal Stationery - Postal Cards (continued)

Lot Type Grading Description Est \$A



Ex Lot 249

249 PS A/A- **1911 Coronation** 1d ACSC #P2-19 group of all-different portraits of KGV x6, Queen Mary & Prince of Wales x2, two with printed address & advice for *GA Bremer & Co*, unused, Cat \$1125. (9) 500



Ex Lot 250

250 PS - annotated all-different selection comprising Portraits of KGV unused x7 & used x2, Queen Mary unused x5 & used x3 (two used on 22.6.1911, the *Coronation Day*), and Prince Edward unused x3 & used, generally very fine, Cat \$2325. (21) 1,000

251 PS A **1911 Victorian Scenes** 1d ACSC #P21 'GILDEROY RANGES', 'GOLD MINE' & 'RIVER YARRA', unused, Cat \$375. 200



Ex Lot 252

252 PS - ACSC #P21 large-part set 10/12 missing only 'BUFFALO MTS' & 'GOLD DREDGING', 'GILDEROY RANGES' is used, others are fine to very fine unused, Cat \$1200. (10) 500

253 PS A- **1913 Kangaroo** 1d Original Die with 'OHMS' Above Heading ACSC #P24ea & 'BOARD OF ADVICE' notice on reverse, superb 'BIRDWOOD/31JL34/STH-AUST' cds, Cat \$350. Extraordinarily late usage. 150

254 PS A+ **1915-18 Penny Sideface** 1d red Die 1 BW #P27, unused, Cat \$150. Superb! 75

255 PS A - 1d red Die 2 Type 2 with *40 Degree Spur* ACSC #P27d, Perth machine cancel & very fine 'GOOMALLING/WA' arrival cds on the face, Cat \$250. 140

COMMONWEALTH OF AUSTRALIA - Postal Stationery - Postal Cards (continued)

Lot Type Grading Description

Est \$A

**Lot 256****256** PS A - 1d red Die 2 with 60 Degree Spur ACSC #P27da, unused, Cat \$500.

350

**Lot 257****257** PS A **1917 Re-Issue of 1d+1d Reply Cards Tasmania** 1892 '1d.' on 1½d outward-half with 'THE ANNEXED CARD IS INTENDED/FOR THE ANSWER' Barred-Out ACSC #P39, unused, Cat \$3000.

2,000

**Lot 258****258** PS A - Tasmania 1892 '1d.' on 1½d reply-half with 'REPLY' Barred-Out ACSC #P40, unused, Cat \$3000. [John Sinfield's example sold at the *Prestige* auction of 14.11.2014 for \$2645]

2,000

**Lot 259****259** PS C **1918 New Shaded Heading** 1d red ACSC #P47 with printed advice for *S Hoffnung & Co* & uprated with KGV ½d green - 'SH/&Co LTD' perfin - for the War Tax, corner bend at lower-left & a bit soiled, Cat \$1500. Rare: the ACSC states that fewer than 10 used & only three unused examples have been recorded. All the used examples have been uprated. The vast majority from this printing were surcharged.

400

260 PS B **1919-23 Penny Halfpenny Sideface** 1½d brown with 'OS/NSW' Puncture BW #51e for *Sydney Harbour Trust*, 1½d red-brown with 'OS/NSW' Puncture ACSC #P52e **1)** for the *Lands Department* & **2)** with *Missing Pin in 'O' & Damaged Pin at U/L of 'N'*, for *Sydney Harbour Trust*, a few faults, Cat \$700. Scarce trio. **(3)**

250

COMMONWEALTH OF AUSTRALIA - Postal Stationery - Postal Cards (continued)

Lot Type Grading Description Est \$A



Lot 261

261	PS	B	- 1½d emerald-green with Footnote Added ACSC #P54 to Illinois uprated with KGV ½d green tied by Adelaide Krag machine cancel with scarce 'BRITISH EMPIRE EXHIBITION/ALWAYS ASK FOR/AUSTRALIAN PRODUCTS' slogan, minor blemishes, Cat \$300. A very scarce uprating.	150
262	PS	A+	- 1½d emerald-green with Footnote Added ACSC #P54, to New Zealand in 1924 with Melbourne slogan cancel, Cat \$300. Superb!	150



Ex Lot 263

263	PS	A+/B	1923 'ONE/PENNY' Surcharges 1d on 1½d brown with Footnote ACSC #P57 (a bit aged), 1d on 1½d red-brown with Footnote Removed #P58 (bumped corners but fine), 1d on 1½d emerald with No Footnote #P59 (superb!) & 1d on 1½d emerald with Redrawn Header & Footnote Added #P60 (very fine), all unused, Cat \$2800. Rarely available as a "set". (4)	1,400
-----	----	------	---	-------



Lot 264




264	PS	B	- 1d on 1½d dark brown with Two-Line Footnote (#P51) ACSC #P57, minor blemishes, unused, Cat \$1500.	400
-----	----	---	--	-----



Lot 265

265	PS	A	- 1d on 1½d dark brown with Two-Line Footnote (#P51) ACSC #P57, unused, Cat \$1500.	1,000
266	PS	A-	- 1d on 1½d brown without Footnote (#P52) ACSC #P58, two slightly bumped corners, unused, Cat \$500.	200

COMMONWEALTH OF AUSTRALIA - Postal Stationery - Postal Cards (continued)

Lot	Type	Grading	Description	Est \$A
				
Lot 267				
267	PS	C	- 1d on 1½d brown without Footnote (#P52) with <i>Overprint Misplaced Diagonally</i> BW #58ca with printed advice for <i>Michaelis Hallenstein & Co</i> , discolouration at the base, addressed but unused, Cat \$1250. [The ACSC states only one example is recorded]	500
				
Lot 268				
268	PS	A+	- 1d on 1½d green without Footnote (#P53) ACSC #P59 with slight <i>Misplacement of the Overprint</i> , unused, Cat \$500+. Superb!	400
269	PS	A	- 1d on 1½d emerald without Footnote (#P53) ACSC #P59, used within Tasmania, Cat \$200.	100
				
Lot 270				
270	PS	A	- 1d on 1½d emerald without Footnote & the <i>Surcharge Significantly Misplaced</i> ACSC #P59d with unlisted plate flaw <i>Broken Line to Right of 'CARD'</i> ; unused, Cat \$1250+. [This is an unlisted variety & a more dramatic misplacement than the card illustrated in the ACSC, which item is stated to be unique]	500
271	PS	A-	- 1d on 1½d emerald without Footnote (#P53) with <i>Broken Horizontal Line Left of 'POST'</i> ACSC #59f, minor spotting on the reverse only, unused, Cat \$1000.	400
272	PS	A+	- 1d on 1½d emerald with Footnote (#P54) ACSC #P60, unused, Cat \$300. Superb!	200
273	PS	A-	- 1d on 1½d emerald with Footnote & <i>Broken L/R Corner of the Stamp</i> ACSC #P60d, minor stain on the reverse, unused, Cat \$500.	200
274	PS	A-	1924-37 KGV Sideface 1d green <i>Die 1</i> on Buff for <i>Sydney Harbour Trust</i> & 1d green <i>Die 3</i> on White for <i>Lands Department</i> both punctured 'OS/NSW' ACSC #P61e & 62e, a couple of tiny problems, Cat \$450. (2)	250
275	PS	A/A-	- 1½d brown with 83mm Footnote ACSC #P67 x2 (one in a very unusual dull shade with RACQ notice on the reverse), & with 88½mm Footnote #P68(1) in a brighter shade, and on <i>Flimsy Stock</i> #P68(2), unused, Cat \$420+. (4)	250
276	PS	A+	- 1½d brown with 83mm Footnote and <i>No Stop after 'Empire '</i> punctured 'OS/NSW' ACSC #P67d/e for <i>Sydney Harbour Trust</i> , unused & unpriced thus. Superb!	250
277	PS	A	- 1½d with 88½mm Footnote on <i>Flimsy Stock</i> ACSC #P68(2), unused, Cat \$300.	200
278	PS	A	1938-51 KGV Issues 1½d brown punctured 'OS/NSW' ACSC #P70e for the <i>Maritime Services Board</i> , to Mosman with Sydney slogan cancel, Cat \$400. [The damaged pins in 'O' & 'N' had been replaced by mid-1936]	250

COMMONWEALTH OF AUSTRALIA - Postal Stationery - Postal Cards (continued)

Lot Type Grading Description

Est \$A

**Lot 279**

279 PS A - Queen Mother 1d+1d with two 'OS/NSW' Perfins BW #P71e for the *Government Printing Office*, to Perth in 1943 with Sydney machine cancel, Cat \$500. A very desirable "doubleton". *Ex John Sinfield*: sold at the *Prestige* auction of 8.11.2013 for \$437.

400

**Lot 280**

280 PS A - 2d mauve on off-white stock punctured 'OS/NSW' ACSC #P72(2)e for the *Government Printing Office*, to Gunnedah in 1948 with Sydney slogan cancel, Cat \$300. [This was the last Postal Card provided with the 'OS/NSW' perfin]

200