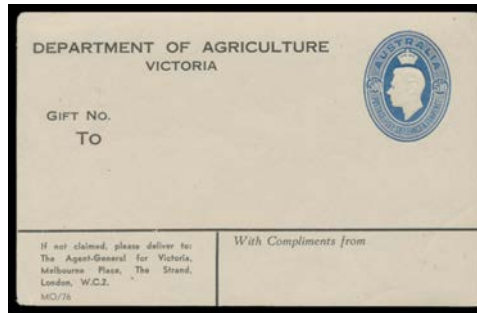


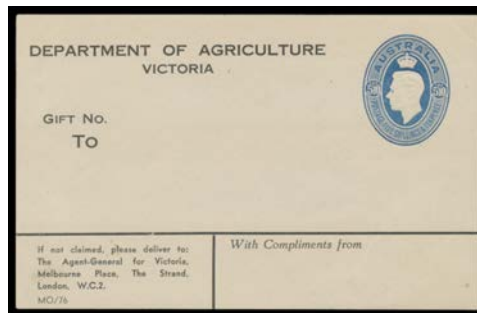
Lot Type Grading Description

Est \$A

COMMONWEALTH OF AUSTRALIA - Postal Stationery - Food Parcel Labels**Ex Lot 340**

340 DPS A 1946 3/7d (used) & 5/10d (unmounted mint) Myer cutouts plus 5/10d complete label for 'DEPARTMENT OF AGRICULTURE/VICTORIA' ACSC #PL4B with 'MO/76' at lower-left, large-part o.g., Cat \$1650. (3 items)

800

**Lot 341**

341 PS A- - 5/10d light blue for Victorian Department of Agriculture ACSC #PL4B with 'MO/76' at lower-left, unused, a few minor gumside blemishes, large-part o.g., Cat \$1000.

400