

Lot Type Grading Description

Est \$A

NEW SOUTH WALES



Ex Lot 498

498	*/O		<p>Accumulation in stockbook from Sydney Views including 1d pair (cut-into at top) and 2d (creased) with numeral '100' of Baraba (RRR), Laureates 2d superb marginal single with numeral '66' and pair with numeral '57' of Raymond Terrace (RR), range of imperf Diadems to 1/- noted a few Moreton Bay cancels, then quantity later issues noted postally-used Stamp Duty 'TWO PENCE' on 1d brown pair, also surcharges and official overprints, some mint including 'NINEPENCE' on 10d block of 11, a few imprints & 'SPECIMEN' overprints including Stamp Duty 10/-, Postage Dues, Revenues noted 1870s 5/- used, apparently unchecked for perf & wmk varieties, plenty postmark interest, condition mixed but many fine. (100s)</p>	1,000 ^T
499	G	(A)/B	<p>1851-53 Laureates Fine Impressions on Blued Paper 2d chalky blue SG 53 horizontal strip of 4, margins close to large, shallow thin between the first two units & a couple of ironed-out creases, Cat £140++. Very scarce multiple.</p>	140 ^T



Lot 500

500	*	A	<p>1854-59 Large Diadems 5d dull green SG 88, margins close to large, large-part o.g., Cat £1300.</p>	1,000 ^T
-----	---	---	--	--------------------



Lot 501

501	Ω	A	<p>- 1/- pale red SG 100, close even margins, unused, Cat £4000.</p>	1,000 ^T
-----	---	---	--	--------------------



Lot 502

502	P	A	<p>1856-60 Small Diadems 1d imperforate plate proof in scarlet on blued unwatermarked paper, margins close to good.</p>	400 ^T
-----	---	---	--	------------------

NEW SOUTH WALES (continued)

Lot Type Grading Description

Est \$A

**Lot 503**

503 Ω A **1860-72 Diadems** 1/- rose-carmine as SG 153 but *Imperforate* with diagonal 'SPECIMEN' Overprint, large even margins, no gum.

200^T**Lot 504**

504 H A **1882-97 Wmk '40'** 6d mauve Perf 12x10 marginal from the right of the sheet with part-imprint as SG 235ca but *Imperf at Right*, postal cancel. Rare: about 8 examples have been recorded, of which most have fiscal cancels.

400^T**Lot 505**

505 * A **1888-90 Centennial** 1/- violet-brown *Imperforate* single as SG 258ca from the base of the sheet, large-part o.g., Cat £1400 for a pair. *Ex "Carrington" (Mark Dankin)*. [Our vendor states that only this single & two pairs are recorded. Not to be confused with SG 312a, which turns up regularly]

800^T**Lot 506**

506 * A **1899 Chalk-Surfaced Paper** 6d emerald-green *Imperforate Pair* SG 307a from the right of the sheet, large-part o.g., Cat £600.

500^T

NEW SOUTH WALES (continued)

Lot Type Grading Description

Est \$A



Lot 507

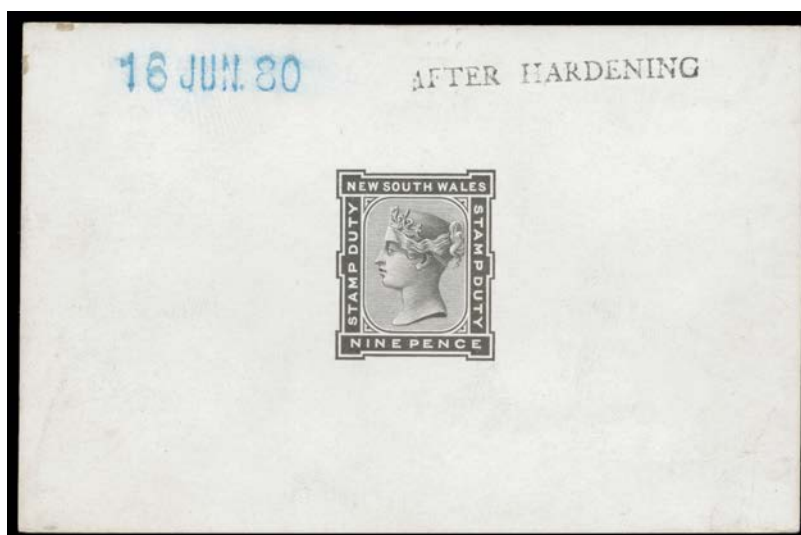
507 * A 'OS' OVERPRINTS: 1882-85 Wmk '40' 2d blue Perf 11x12 SG O21c with *Double Overprint One Albino* block of 4, large-part o.g. Unlisted by *Gibbons*.

350



Lot 508

508 * A C1 - 1891 1/2d on 1d grey with *Double 'OS' Overprint* SG O55a, large-part o.g., Cat £1500. A rare & dramatic error, of which **only 3 examples have been recorded**. [A similar stamp sold at our auction of 1.9.2018 for \$4370]

3,500^T

Lot 509

509 P A **REVENUES:** Stamp Duty 1880 9d die proof in black on highly glazed card (93x61mm), '16JUN80' h/s in blue at U/L & 'AFTER HARDENING' h/s at U/R.

500^T

510 O B - *Metropolitan Hospitals Contribution Fund* Contributor's Book with *MHCF* 1/- red x7, 2/- blue x34 and **bisected** 6/- purple x6 all tied by pencil cancels, 'FA PARLE MPS PHC/CAMPSIE/DISPENSING CHEMIST' oval cachets in violet on face, some discolouration from rusty staples and a few of the adhesives are faulty.

100

511 **/A+ B1 - Stamp Duty 1867-72 1d lilac/blued paper U/L corner block of 9, the upper units with marginal 'WALES' Watermark, part-imprint '...per Sheet of 63' at left, virtually full o.g. with six units unmounted. Superb!

250^T