

Lot Type Grading Description

Est \$A

AUSTRALIA - PRE WORLD WAR I MILITARY CAMPS

We are pleased to present the collection formed by Gary Diffen from Melbourne. All of this material is extremely elusive. It is also little known and even less appreciated, as reflected in the conservative estimates.

**Lot 455**

455	PS	B	NEW SOUTH WALES: 1900 usage of 1d Postal Card with three part-strikes of the rare 'THE CAMP/DE31/1900/NSW' cds (ERD), to 'MALTA' with arrival cds of FE3/01 on the face, minor blemishes. Rare: recorded 18 months only, & the only recorded example on cover . [Little is known of this "PO" or marking. It was presumably a "relief" type that moved from site to site]	250
456	PS	C	- 1901 usage of 1d Postal Card with message headed "Paddington Camp", 'PETERSHAM' arrival backstamp, soiled. [Paddington Camp was the site of the permanent facility Victoria Barracks]	150

**Lot 457**

457	C	B	- 1906 <i>real photo</i> PPC "Liverpool 1906" of troops in uniform & two young lads, minor blemishes, unused.	100
------------	---	---	---	-----

**Lot 458**

458	C	A	- 1906 <i>John Bland real photo</i> PPC "3rd ALH - Part of Braidwood (NSW) Troop" (mounted soldiers) with BN '38' cancel & 'BRAIDWOOD/DE25/1906/NSW' cds (Christmas Day).	150
------------	---	---	---	-----

**Lot 459**

459	C	B	- 1910 (Oct) <i>real photo</i> PPC "Area Officers Camp Albury..." panorama of tents & officers, minor blemishes, unused.	100
460	C	A-	- 1910 (Oct) <i>real photo</i> PPC of Albury Camp with message headed "Sunday 23.10.10" & 1d cancelled at Albury. Message states "This PC shows a portion of our camp..."	150

AUSTRALIA - PRE WORLD WAR I MILITARY CAMPS (continued)

Lot Type Grading Description

Est \$A



Lot 461

- | | | | | |
|-----|---|----|--|-----|
| 461 | C | A- | - 1911 PPC 'SCEGS Sanitorium, School House, Library' to a cadet at Waverley with 1d punctured 'OS' (fault) tied by BN '1584' of 'HORNSBY', message headed "Area Office 19B/Hornsby" over ["A Cooke-Russell"] Captain/Area Officer/Training Area 19B' cachet in violet (the only such pre-WWI cachet we have seen). | 200 |
|-----|---|----|--|-----|



Lot 462

- | | | | | |
|-----|---|---|--|-----|
| 462 | C | A | - 1913 real photo PPC "Liverpool 1913" of the Easter Camp after heavy rains, unused. | 100 |
|-----|---|---|--|-----|



Lot 463

- | | | | | |
|-----|---|---|--|-----|
| 463 | C | C | QUEENSLAND: 1901 (Mar 1) illustrated YMCA envelope with 'QUEENSLAND/FIFTH CONTINGENT/LYTTON/BRISBANE' header, to London where redirected, a bit knocked-about. Rare: the only Boer War Camp cover recorded from Queensland & the only such item we have seen from Australia. | 400 |
|-----|---|---|--|-----|



Lot 464

- | | | | | |
|-----|---|-----|--|-----|
| 464 | C | (A) | - 1905 late usage of Boer War patriotic envelope 'GOOD LUCK/THE QUEENSLAND CONTINGENTS/[soldier]/ABSENT MINDED BEGGARS' (the last line obscured by the 2d stamp), to Hobart with small repaired spikehole. Only the second example we have seen. | 200 |
|-----|---|-----|--|-----|

- | | | | | |
|-----|-----|-----|--|-----|
| 465 | C/L | C/B | SOUTH AUSTRALIA: Real photo PPC of a school cadet, heavy crease, unused; and 1911 'RECORD BOOK' re exemptions from attending military training issued to a schoolboy & details of two unit transfers, 'RIFLES CLUB OFFICE/SA' cachet in red on the reverse. (2 items) | 100 |
|-----|-----|-----|--|-----|

- | | | | | |
|-----|---|---|---|-----|
| 466 | C | A | - 1908 real photo PPC 'Easter Camp Nairne' (large hillside encampment), unused. | 100 |
|-----|---|---|---|-----|

AUSTRALIA - PRE WORLD WAR I MILITARY CAMPS (continued)

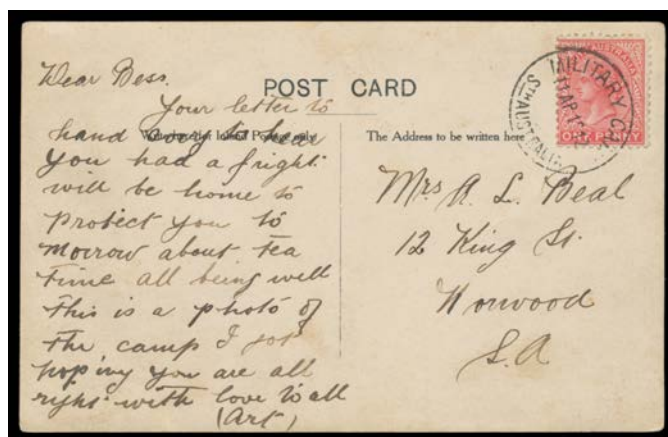
Lot Type Grading Description

Est \$A



Lot 467

- | | | | | |
|-----|---|-------|---|-----|
| 467 | C | A- A1 | - 'MILITARY CAMP/17AP1911/STH AUSTRALIA' very fine strike on 1d red on <i>Tourist Bureau</i> PPC ("Morialta Falls") to Wallaroo. Rated RRRRR. PO at Happy Valley Camp Easter-1911. <i>Ex John Bell</i> : acquired at the <i>Prestige</i> auction of 14.11.2014 for \$552. The writer states "Arrived safe...we had to march from [?] to the top of tapley's hill". [This is the ERD for the Military Camp cds, which was essentially a "relief" datestamp. It had six separate allocations between Easter 1911 & 4.10.1915] | 500 |
|-----|---|-------|---|-----|



Lot 468

- | | | | | |
|-----|---|-------|---|-----|
| 468 | C | B A2+ | - 'MILITARY CAMP/11AP1912/STH AUSTRALIA' largely superb strike on <i>real photo</i> PPC of the Camp at Murray Bridge, to Norwood. Rated RRRRR. PO Easter-1912. <i>Ex John Bell</i> : acquired at the <i>Prestige</i> auction of 14.11.2014 for \$604. [The writer states "...will be home to protect you tomorrow about tea time...This is a photo of the camp..."] | 500 |
| 469 | C | A | - 1914 <i>real photo</i> PPC '22nd LH Encampment/Bordertown 1914' of soldiers outside tent. | 100 |
| 470 | C | B | - 1914 <i>real photo</i> PPC of soldiers outside tent, ballpoint pen endorsements on reverse of the men's names over "Morphettville 1914", blemishes. | 75 |
| 471 | C | B/C | TASMANIA : Mail to militiamen at Ulverstone (1905), Forth (1910 - with '1st Battalion Tasmanian Rangers' imprint - & undated) or Ross Camp (1911 and 1913), also 1916 with 'TASMANIAN RANGERS' crest on flap and 'MILITARY CAMP 1/TASMANIA' cds to Egypt, condition variable. (6) | 200 |



Lot 472

- | | | | | |
|-----|----|---|--|-----|
| 472 | PS | C | - c.1911 usage of Fullface 1d Letter Card ('NATIONAL PARK/NS WALES'; vertical scene) endorsed "Ross Camp Ross" at left & with faint strike of the rubber 'MILITARY CAMP' cds in blue, somewhat aged. Rare. | 400 |
| 473 | C | B | - 1914 <i>Propsting real photo</i> PPC 'Light Horse at Mona Vale 1914', minor blemishes, unused. | 100 |

AUSTRALIA - PRE WORLD WAR I MILITARY CAMPS (continued)

Lot Type Grading Description Est \$A



Lot 474

474 C B - 1914 Spurling real photo PPC of bugler & catering corps, Pictorial 1d with 'ROSS/AP15/14/TASMANIA' cds, minor blemishes. 250

475 C **VICTORIA:** 1903-14 Military Camp group photographs on backing card comprising "East Camp of Rangers Sunbury 1903", "First Light Horse Camp Lancefield 1904", "Sgts Mess 10th ALH Kilmore Camp 1912", "Sgts Mess Wallan Camp 4th to 15th March 1913" & "Officers 10th ALH" (undated), condition variable. Rare & appealing. (5) 250



Lot 476

476 C B A1+ - 1900 cover to "Reuters Telegram Co Ltd/Melbourne" with 2d tied by superb BN '231' (rated RR) & very fine large-part ' 1 /MILITARY/AP9/-/ENCAMPMENT' Shield d/s (year slugs omitted) used at Langwarrin Camp (5), Melbourne arrival b/s, central vertical fold. PO 28.3.1900; closed 18.4.1900. Ex Gary Watson. 400



Lot 477

477 C B A1+ - 1901 cover to NSW with 2d tied by superb ' 1 /MILITARY/MY8/01/ENCAMPMENT' Shield d/s used at Langwarrin Camp (6), Sydney transit & Willoughby arrival b/s, minor blemishes. PO 15.1.1901; closed mid-1901. 400

AUSTRALIA - PRE WORLD WAR I MILITARY CAMPS (continued)

Lot	Type	Grading	Description	Est \$A
-----	------	---------	-------------	---------

**Ex Lot 478**

478	C/L	B/A-	- 1902 cover to Hawthorn with 1d & two large-part strikes '2 /MILITARY/MR10/02/ENCAMPMENT' Shield d/s used at Langwarrin Military Camp (1), Melbourne transit & Hawthorn arrival b/s, minor blemishes & repaired tear at top; plus the enclosed letter with printed 'No 2 Commonwealth Contingent/Melbourne YMCA Tent/Langwarrin Victoria' states "...I will be up in uniform". PO 9.1.1902; closed mid-1902. (2 items)	400
------------	-----	------	---	-----

**Lot 479**

479	C	A	- 1908 <i>real photo</i> PPC 'Scottish Bands/Langwarrin Camp 1908', unused. Between 1904 & 1910 there were no temporary pos offices at the Easter Camps.	100
480	C	A-	- 1909 PPC with message headed "12-4-09/Camp/Langwarrin", cancelled on arrival at Coburg, a little soiled.	100
481	C	B	- 1910 <i>R McGeehan real photo</i> PPC 'CAMP SEYMOUR', corner pinholes, unused.	75

**Lot 482**

482	C	B	- 1910 <i>YMCA real photo</i> PPC of Lord Kitchener with 'KITCHENER CAMP/Seymour Victoria/...' imprint at top, 1d tied by large-part '2 /MILITARY/JA13/10/ENCAMPMENT' shield d/s, small repaired tear at top & minor blemishes.	400
------------	---	---	---	-----

**Ex Lot 483**

483	C	B	- 1911 (or 1912?) <i>real photo</i> PPCs 'Kilmore Camp' (lighthorsemen) & 'Kilmore Camp - Buglers', soiled on reverse, unused. (2)	200
------------	---	---	--	-----

AUSTRALIA - PRE WORLD WAR I MILITARY CAMPS (continued)

Lot Type Grading Description

Est \$A

**Lot 484**

484 C B - 1911 *Vallan Studio (Mansfield) real photo* PPC 'Church Parade 1911 Easter Camp at Kilmore', 1d tied by Kilmore duplex of AP25/11, suntanned on reverse, message states "This is a pc of me at kirk...". 200

**Lot 485**

485 C A - 1912 *real photo* PPC 'ALH Camp/Kilmore 1912' (riders with horsemen behind), unused. 100

**Lot 486**

486 C B - 1912 *real photo* PPC 'GUN SECTION BALLARAT 1912' (lighthorsemen but no guns!), soiled on reverse, unused. There was no post office provided. 100

**Lot 487**

487 C A+ - 1912 PPC of *Kilmore Hospital* with 1d tied by superb '2 /MILITARY/AP10/12/ENCAMPMENT' shield d/s. Superb! Kilmore Military Camp (2) PO 4.4.1912; closed 12.4.1912. 400

AUSTRALIA - PRE WORLD WAR I MILITARY CAMPS (continued)

Lot Type Grading Description

Est \$A



Lot 488

488	C	B	- 1913 Y.M.C.A. PPC of the Y.M.C.A. marquee & '.../Commonwealth Military Forces/...' imprint, 1d tied by superb large-part ' 2 /MILITARY/MR22/13/ENCAMPMENT' shield d/s (ERD) used at Heidelberg, minor blemishes. Heidelberg Military Camp PO 20.3.1913; closed 28.3.1913.	500
489	C	A	- 1913 PPC 'ALH Camp Burrumbeet 1913' (horses wading & drinking), unused. Burrumbeet Military Camp (1) PO 29.11.1913; closed 6.12.1913.	100
490	C	A-	- 1913 W Hale (Kilmore) real photo PPC 'Wallan LH Camp', minor blemishes, unused.	100
491	C	C	- 1913 Y.M.C.A. PPC of the Y.M.C.A. marquee & '.../Commonwealth Military Forces/...' imprint & message headed "Wallan", 1d stamp removed & traces of Wallan Wallan cds, spotty. [There was no temporary post office]	100



Lot 492

492	C	A	- 1914 R McGeehan real photo PPC 'A View of LH Camp/Burrumbeet 1914', unused. Burrumbeet Military Camp (2) PO 12.3.1914; closed 19.3.1914.	100
-----	---	---	--	-----



Lot 493

493	C	B	- 1914 usage of 1d Kangaroo Letter Card ('BOTANIC GARDENS/PORTLAND VIC') with message headed "13th AAMC/Lilydale/10.2.14", cancelled with the new relief 'MILITARY ENCAMPMENT/VIC' cds (the only recorded example), soiled. Lilydale Military Camp PO 7.2.1914; closed 14.2.1914. [The ERD of the cds]	400
-----	---	---	--	-----

AUSTRALIA - PRE WORLD WAR I MILITARY CAMPS (continued)

Lot	Type	Grading	Description	Est \$A
-----	------	---------	-------------	---------



Lot 494

494

C

A

- 1914 Y.M.C.A. PPC of the Y.M.C.A. Marquee with '.../Commonwealth Military Forces' imprint at top, 1d Roo tied by two overlapped strikes of the '2 /MILITARY/15AP/14/ENCAMPMENT' shield d/s (LRD). Bundoora Military Camp PO 11.4.1914; closed 17.4.1914. Ex Gary Watson: illustrated by Watson Webster & Wood at page B-132. [Message states "be in town on Friday to see us march in"].

500