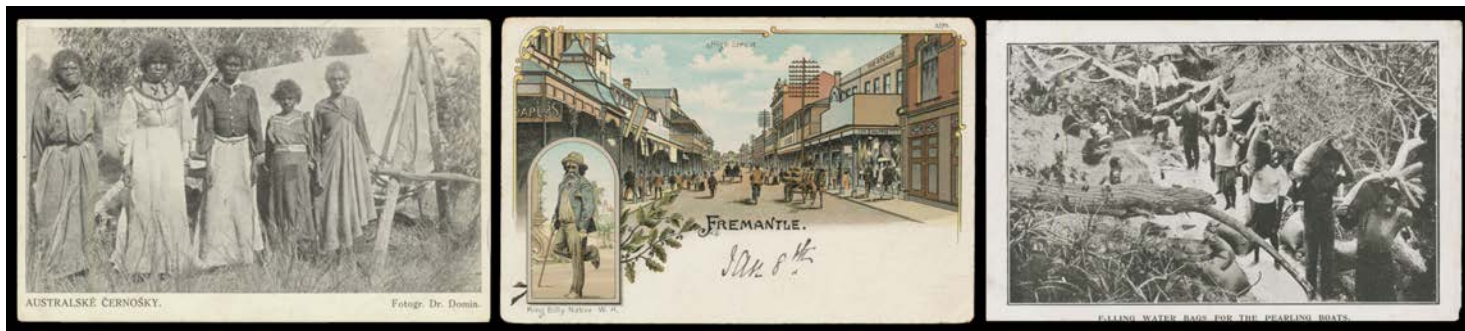


Lot Type Grading Description

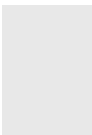
Est \$A

AUSTRALIAN PICTURE POSTCARDS

See also World Postcards - Lots 859 to 891 - for mixed lots including other Australian cards.

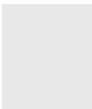


Ex Lot 433

433 C  **Aborigines** selection with many portraits including studio shots, various from *Trans-Australian Railway* series, two Thursday Island cards, a Czech card (!) of Aboriginal women, artist cards including c.1899 chromolitho of Fremantle & 'King Billy Native WA' (minor blemishes; a better example sold at auction in 2015 for \$264) and set of 12 artist cards derived from photographs by *Charles Kerry & Nicholas Caire*, also concertina folders with six photos of 'North Australia' & six *Albert Namatjira* paintings, and six *Liebig* trade cards, condition variable. Scarce material. **(51 items)** 1,000

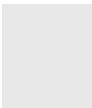


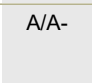
Ex Lot 434

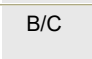
434 C  **Entertaining collection of humorous artist cards** from *Stuart Allan* to *Harry Weston* including *Fred Booty*, *WM Bourke*, *G Brandt*, *Cyril Dillon*, *R Gilbert*, *Hal Gye*, *WR Hamilton*, "*Handy*", *G Kingsley-Smith* "*The Lizard*", *Red Nolan*, *Charles Nuttall*, *David Souter* and *George Taylor*, condition variable but many are fine to very fine. Many are very scarce. **(125)** 600



Ex Lot 435

435 C  **Range** with some better NSW views including a fantastic *real photo* of shearers at smoko, also *Kerry* 'Pine Avenue/Norfolk Island', *VSM* "Stamps" cards x4, advertising cards including for *Singer Sewing Machines*, *Swallow & Ariell's Biscuits*, *Viceroy Tea & SAP Rabbit Poison*, *Talma* Acresses x5, etc, also two very fine & informative photographs (175x90) of a NSW (?) streetscape, condition variable. **(58)** 250

436 C  A/A- **Entertainment** group of mostly *Talma* cards plus a few *Falks* & others of actors & actresses including *Tittell Brune*, *Madame Melba* and *JC Williamson*, several *Art Nouveau* types, also a few "stills" including the cringeworthy 'There's a New Coon in Town' & 'The Golliwogs', condition variable but most are good to fine used or unused. **(33)** 100

437 C  B/C **1905 (c.) Prebble & Moad (Melbourne)** 'The Boarding-House Series' of humorous artist cards by *Vasco Loureiro*, three used under cover the others unused, some soiling. Rare. **(6)** 200

AUSTRALIAN PICTURE POSTCARDS (continued)

Lot Type Grading Description

Est \$A



Lot 438

438 C B - (c.) 'All up a Gumtree' (kookaburra & fairies) artist card by *Ida S Rintoull*, used to London in 1905, a little soiled. Rare.

250



Ex Lot 439

439 C A-/A+ 1915 (c.) *May Gibbs* Gumnut Babies 'The/Girls/I left/behind/me' (marching off to war), 'Hope you're still going strong' (badminton), 'We're still/above water!' (surfing on a gumleaf) & 'Flannel/Flower/Babies/Grow/in Australia/(They bring love)' the last a bit larger with plain back (proof?), unused. (4)

500



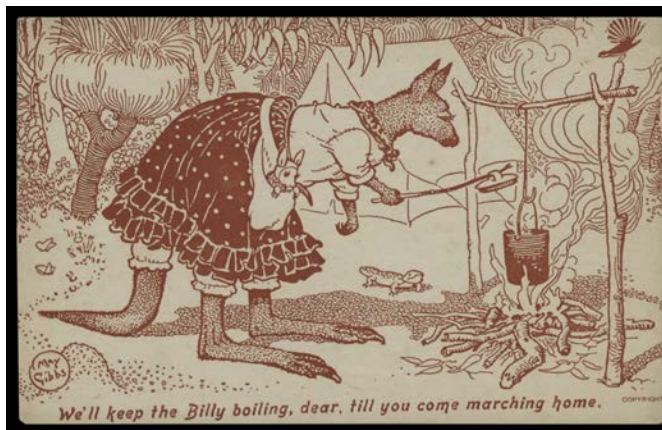
Lot 440

440 C A - (c.) *May Gibbs* 'Hope you're still going strong' (Gumnut Babies playing Badminton), unused.

100

AUSTRALIAN PICTURE POSTCARDS (continued)

Lot Type Grading Description Est \$A



Lot 441

441 C A- - (c.) May Gibbs 'We'll keep the Billy boiling, dear, till you come marching home' illustration of Kangaroo & Joey tending the fire, insignificant blemishes, unused with plain back (proof?). Rare. 200

442 C A/B **NEW SOUTH WALES:** c.1905-30 Sydney beaches & swimming, noted Manly, Bondi, Coogee & La Perouse. Ex Harry Gallagher, Australia's swimming coach at the 1956 1960 1964 & 1968 Olympics. (61) 200



Ex Lot 443

443 C - **SNOWY MOUNTAINS:** High quality group of scarcer cards including 'School Children on Ski, Kiandra', other skiing cards, 'Cooma Arrival of Sir Harry Rawson', *Hotel Kosciusko* x2, etc, many *real photo* types including Adaminaby & Cooma multi-views, 'Kylloe Boiler F in Commissioner Street' (Cooma), 'Sharp Street, Cooma', 'Post Office Cooma' & a couple of *Snowy Mountain Authority* subjects, mostly fine to very fine & mainly unused. (33) 500



Ex Lot 444

444 C A/B **QUEENSLAND:** All-different cards of Customs Houses at Brisbane x11, Bundaberg x2, Mackay x2, Maryborough x3, Rockhampton x3 & Townsville x4, a couple of Undivided Backs & a few are *real photo* types, fine to very fine & mostly unused. (25) 300

AUSTRALIAN PICTURE POSTCARDS (continued)

Lot Type Grading Description

Est \$A



Ex Lot 445

445 C A **SOUTH AUSTRALIA:** High quality selection of mostly *real photo* cards including of Milang PO, 'Marino...remains of Old Railway', 'The Meat Store' (Pinnaroo), Jamestown, Streaky Bay, 'St Patrick's Day Sports 17.3.16 Spalding', Loxton apparently in flood, Mount Torrens, and a Murray Bridge multi-view, many of Adelaide Beach Suburbs, also 'Eucalyptus Oil Factory, Cygnet River, KI' (stained on reverse), *Women's Christian Temperance Union* x2, 'Motor Car Stand, Currie Street', 'View of Walter and Morris' Premises from Lipson Street' advertising card, etc, plus *real photo* cards of Railway Stations at Alberton, Brinkworth, Exeter, Laura & Quorn, mostly very fine to superb. **(59)** 1,000



Lot 446

446 C A+ - 1907 *real photo* of Firemen in Training, one in a *Flash Gordon*-like alien suit!, used at Glenelg. Magnificent card! 150

447 C/L - **VICTORIA:** Customs Houses at Geelong, Melbourne x5, Swan Hill (+ a photograph), Williamstown & Yarrowonga x3 (two are *real photos*) plus associated postal history & ephemera. *Ex John Lancaster.* 100



Ex Lot 448

448 C A/B - 1900 Victorian Contingent to the Boer War 'CANDIDATES' (a little soiled) & 'RIDING TESTS' both apparently from a training camp at Ballarat, and 'CAPTAIN DJ HAM' unused. Rare trio. **(3)** 300^T

AUSTRALIAN PICTURE POSTCARDS (continued)

Lot Type Grading Description

Est \$A



Ex Lot 449

449 C - **Railway Stations** *real photo* types of Avoca, Cheltenham, Hastings, Middle Brighton (*Valentine*), Mitcham, Mornington (spotty on reverse), Shepparton & Yarra Junction (*Rose*), generally fine to very fine used or unused. (8) 300



Ex Lot 450

450 C A - **Dandenongs & Foothills** selection of mostly *real photo* cards including 'Belgrave South/Post Office Store', *Dickinson Belgrave* 'Post Office and Store Belgrave', Croydon 'General Store', 'Mechanics' Inst' & 'Croydon Hotel', Lilydale 'Main Road' & Interior of Railway Refreshment Room, and Ringwood 'Main Street', 'Post Office', 'Methodist Church' & 'Cool Store', etc, generally very fine & mostly unused. (24) 600



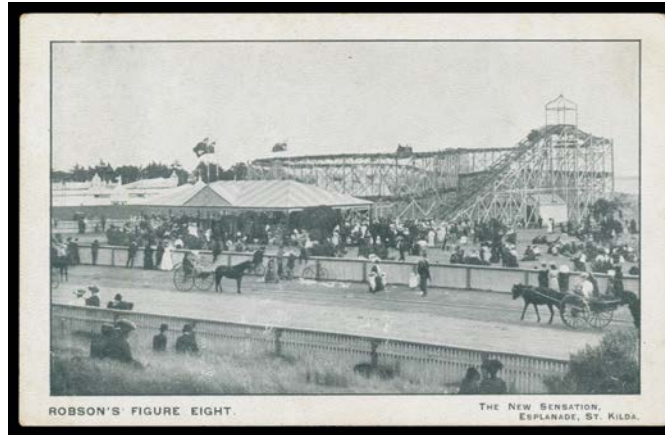
Ex Lot 451

451 C - **Melbourne Suburbs** selection of mostly *real photo* cards including 'Doncaster Tower Hotel', 'Female Consumptive Wing *Austin Hospital*', 'Church of England Ivanhoe', 'Racecourse Road Newmarket' (tram), 'Northcote', 'Bridge Road Richmond' (outstanding aerial view) & *carte de visite* of 'A *Garlick* Boot-Maker', Mont Park Military Hospital x2, etc, also Tram cards of Ascot Vale, Collingwood & Preston x2, and Undivided Back chromolitho Melbourne multi-view, generally very fine used or unused. A very desirable group. (15) 500

AUSTRALIAN PICTURE POSTCARDS (continued)

Lot Type Grading Description

Est \$A



Ex Lot 452

452 C A - **St Kilda** selection of mostly *real photo* cards including five terrific *Luna Park* cards (two *Whitney Bros* types), excellent view of motor car crossing 'The Junction, St Kilda', range of St Kilda Beach cards including better *Rose & Valentine* views, etc, generally very fine unused. (30)

600



Ex Lot 453

453 C - **Bayside Suburbs** excellent selection of mostly *real photo* types including early *Rose & Valentine* cards, noted 'Bungalows Austral Grounds Aspendale' (the only Aspendale card we have seen), 'State School Bentleigh' (advertising card for *JF Brady Estate Agents*; the only Bentleigh card we have seen), Carrum with 'A Morning Dip before School Time', 'Main Rd' & 'Main Street', Chelsea 'Frankston Road' (the General Store), Cheltenham with 'Fairy Garden', 'State School' and 'Mechanics & Library', excellent Hampton group with 'Main Street', 'Looking Across to Cecil Cafe', 'Hampton Street', 'Linacre Store' & 'The Beach' x2 both with long lines of bathing boxes, Middle Brighton 'Corporation Baths', Mordialloc with 'Main-road' & '*Small & Edwards Estate Agents*' etc, generally very fine used or unused. An outstanding lot. (36)

1,000



Ex Lot 454

454 C - **Mornington Peninsula** mostly early *Rose & Valentine real photo* cards with Seaford animated beach scene, Frankston with 'The Main Street', 'The Mile Bridge', 'A Pioneer's Retreat', 'Fishing Kananook Creek', 'Camp Life at Frankston' & two intrepid Rabbit Hunters!, Dromana with 'Hotel Dromana' & 'Barnes Corner', Rosebud with 'Leisurelands', 'Parkmore', 'Cattle on Rosebud Road' & multi-view, Rye with 'Hotel Rye', 'Pt Nepean Road', 'Nepean Highway' & a panorama, Sorrento with 'Whitehall' & 'The Oriental Guest House', Flinders with 'St Andrews', 'Oaklands', 'The Bungalow' & 'Cook Street', Somers 'Children's School Camp', etc, mostly unused & generally very fine. (55)

600