

Lot Type Grading Description

Est \$A

SEYCHELLES - Airmail Covers - Commercial**Ex Lot 1287**

- 1287** CPS A/B **1926-37** inwards covers **1)** 1926 (Oct 10) from USA flown Washington-Philadelphia then by sea (believed the earliest "airmail" item to the Seychelles); **2)** 1935 (Sep 29) commercial from GB per *Imperial Airways* GB-Mombasa; **3)** 1936 (Jan 29) US-GB per "Ile de France" to contact with *Imperial Airways* to Nairobi where forwarded to Seychelles; **4)** 1936 (Nov 25) commercial usage of GB 4½d Registration Envelope "Via Mombasa & KPM" (Dutch shipping line) uprated with KGV & **KEVIII** franking; and **5)** 1937 (Nov 2) USA to Holland per "Queen Mary" then *KLM* to Bombay but with 'KARACHI/CANCELLED' h/s; all with 'VICTORIA' arrival cds, a few mostly minor faults. **(5)**

500^T**Lot 1288**

- 1288** C A **1928** (Apr 30) Swiss PPC registered and flown Zurich-Cairo-Baghdad with 'BASRA' transit on the face and 'VICTORIA/MY29/28/ SEYCHELLES' arrival b/s. A remarkable origin-destination item.

600^T

SEYCHELLES - Airmail Covers - Commercial (continued)

Lot Type Grading Description

Est \$A

**Ex Lot 1289**

- 1289** C A/B **1933-39** outwards covers comprising **1)** 1933 to GB "via Mombasa" at 12c + 45c surcharge; **2)** 1934 (Oct 5) cover to **Ascension!** endorsed "Air mail to Cape" with 2c 3c 12c & 20c strip of 3 paying 12c + 45c surcharge + 20c registration, Mombasa Nairobi & Cape Town transit b/s; **3)** 1936 (Nov 2) commercial to France with KGV 6c & 1r (fault) paying 20c + 43c surcharge x2; **4)** 1936 (Dec 6) to GB via Bombay with 9c & 20c pair paying 12c + 37c surcharge; **5)** 1937 (Sep 4) to GB via Mombasa with 3c & 25c pairs paying 12c + 43c surcharge (overpaid 1c); and **6)** 1938 (Jan 1) to USA per B/SN 'Karanja' to Mombasa with KGV 3c 6c 12c 20c & 25c paying 20c + 43c surcharge; the first & possibly the last are philatelic. [Official figures reveal only 217 & 227 airmail articles were despatched in 1933 & 1934 respectively] **(6)**

750^T**Ex Lot 1290**

- 1290** CPS A/A- **1938** Empire Air Mail Scheme (EAMS) first day covers from GB 20FEB/1938 & South Africa 18FEB38 x2 (one registered); and from Seychelles MR21/38 & MR22/38 both to South Africa at 12c rate, the latter a vice-regal cover with embossed Crown on the flap. **(5)**

300^T

SEYCHELLES - Airmail Covers - Commercial (continued)

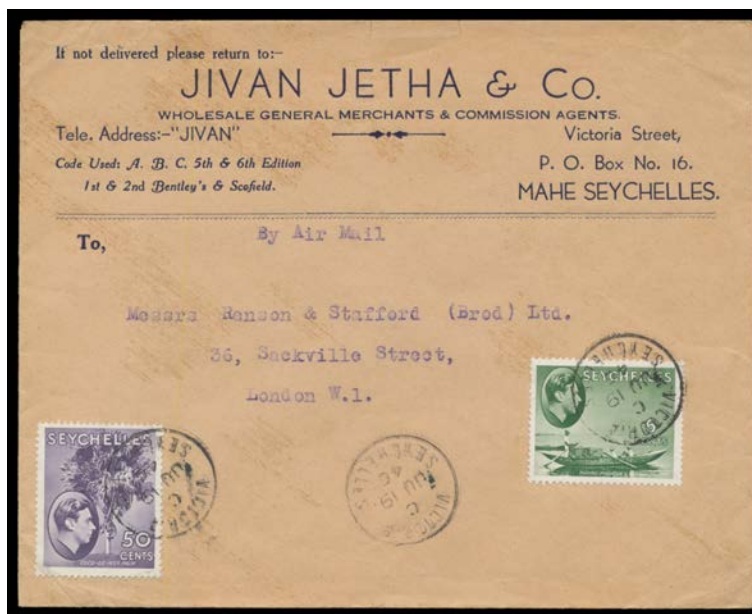
Lot Type Grading Description

Est \$A



Lot 1291

1291	PS	A-	1946 (May 30) social usage of poorly printed formular aerogramme with Tortoise 3c & 30c, to Cyprus with Nicosia transit of 25JU/46 & 'LIMASSOL' arrival b/s, two filing holes on the back panel. Rare. [After the RAF withdrew during May 1946, all mail went by surface & there was very little demand for aerogrammes. The writer states "...I was also in the war of Burma...only 2 months since I have arrived home from India..."]	250 ^T
------	----	----	---	------------------



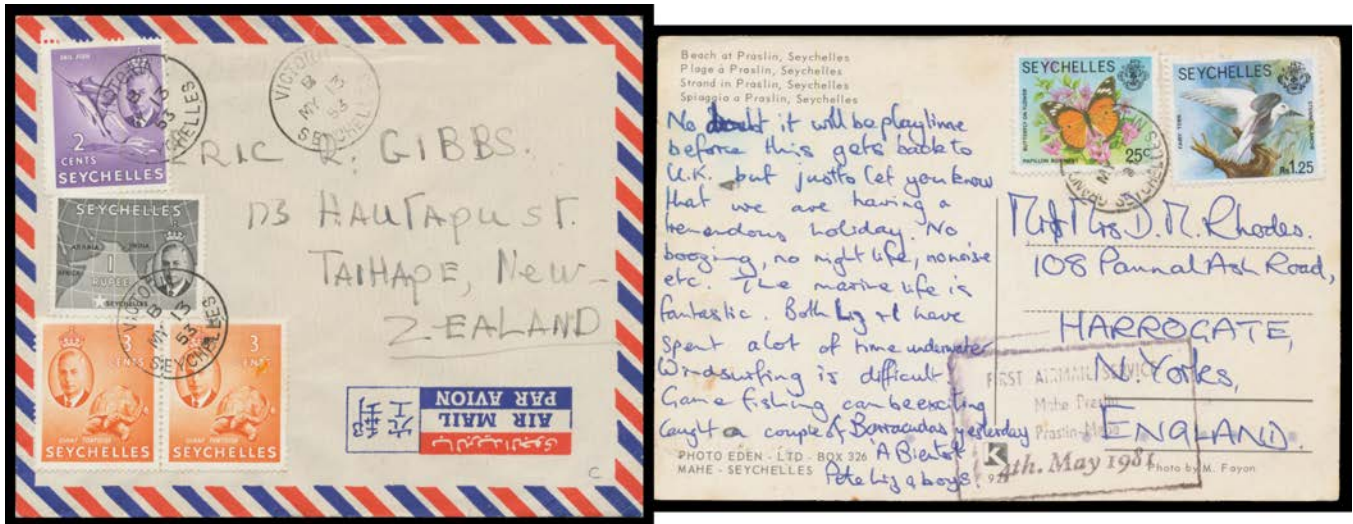
Ex Lot 1292

1292	C/CL	A/B	1946-52 commercial covers to GB x4 (one a Mahé merchant's cover, two registered), France, Switzerland (with Silver Wedding 9c x5) or the USA (registered, with 1952 1r50c), various rates & frankings. (7)	300 ^T
1293	PS	A-	1949 (Feb 17) social usage of British-pattern formular aerogramme to Argentina with 6c Pirogue (fault) & 9c Wedding x3, Buenos Aires arrival b/s of MAR5/1949. [Hopson & McCloy state at p50 "...Not until the early to mid 1950s that air letters again began to be used". The writer was Rev VB Wynburne, Archdeacon of the Seychelles]	300 ^T
1294	C	A/B	1953 (Jan 14) cover endorsed "Catalina Proving Flight/Nairobi-Mahe" & signed by the pilot "HC Holme" with Seychelles 9c cancelled on arrival; and two apparently commercial covers to Kenya both with 'First Air Mail/From Seychelles' black/pink label, the first with 3c Tortoise x8 on the reverse (minor faults), the other with 3c Tortoise pair & 18c Map. [Hopson & McCloy state at p45 that the plane from Kenya "...carried a very small mail, mostly from France & the UK"] (3)	120 ^T

SEYCHELLES - Airmail Covers - Commercial (continued)

Lot Type Grading Description

Est \$A

**Ex Lot 1295**

1295 CPS A/B **1953-93** commercial covers to GB x3 (one a formular aerogramme, the others registered - one with 2r25c Turtle), France x2, Germany, USA x3 (one triple-rate & registered), South Africa (OHMS) & New Zealand, plus PPCs to GB x3 (one taxed, one a social usage with 'FIRST AIRMAIL SERVICE/.../Praslin-Mahe' cachet) & 1965 to USA with boxed 'OAT/FB' cachet applied at London; also 3 philatelic items and 1971 Seychelles *Bulletin* 'Seychelles/Welcomes/BOAC/...'; finally 1953 registered from SWA endorsed "Air Mail via Mombasa". **(20 items)**

800^T