

Lot Type Grading Description

Est \$A

**COMMONWEALTH OF AUSTRALIA - First Day Covers****Lot 356**

<b>356</b>	C	C	<b>1932</b> Sydney Harbour Bridge 2d Typo 3d & 5/- tied to plain cover by very fine 'BRISBANE/14MR32/QUEENSLAND' cds, folds including between the 2d & 3d with incidental reinforced split at the top, flap removed & the reverse used as notepaper!!, Cat \$5000.	1,000 <sup>T</sup>
357	C	A-	<b>1936</b> Cable 2d and 3d tied 'REGISTERED/1-AP36/SYDNEY NSW' cds on PMG's Dept OHMS cover to USA with KGV 1d green added for foreign letter rate and blue R label alongside, unusual oval 'RECORDS/1-APR.1936/NSW' d/s in violet at L/L, Californian arrival b/s, minor discolouration at base of cover. [Enclosed PMG's Dept letter]	200
358	C	A/A-	<b>1945-2017</b> Collection including <i>Royal, Wesley, Excelsior, Sigma</i> and Post Office types in albums, condition mostly very fine plus 'Australian First Day Covers' by Moore, Woolley & Pauer, spiral-bound 210pp. Heavy, two cartons, weighs 27kg. <b>(100s)</b>	200
359	C		<b>1954-2000</b> collection in albums in three cartons, noted 1959 to 2/5d on 'OHMS/Postmaster General' covers, then decimals including PSEs (plus additional unused), Framas, Miniature Sheets, High Denominations to \$10, etc., many with Canberra or Sydney GPO special cancels. Very heavy. <b>(Qty)</b>	250
360	C/CO	A/A-	<b>1970</b> National Development 9c Bauxite pair on oversize <i>Alcoa</i> FDC with enclosed promotional booklet for the company; also <i>Qld Geographical Society</i> 1946 Leichhardt x2 different, one with QGS Leichhardt brochure, and 1946 Mitchell x3 different, one with QGS fundraising brochure. Unusual lot. <b>(7 items)</b>	50
361	C	A	<b>AUTOGRAPHED FIRST DAY COVERS:</b> Famous Australians & Sporting Personalities accumulation including Gough Whitlam, Lewis Clifford (Baron Chudleigh; owner of 'Yarra Brae' where 1948 Jamboree held), Archbishop Little, Ron Barassi, Ian Johnson (Australian cricket captain; also on photo & signed letter), Ron Clarke, Robert de Castella, golfers Bob Shearer, Peter Thompson, Ian Stanley & Terry Gale, etc, also Stamp Designers including Peter Morriss, Robert Ingpen, Ray Honisett, Celia Rosser, etc, on variety of covers up to 2000s, includes FDI cancels on pieces & some PSEs. <b>(100s)</b>	300
362	C	A	- Military & Aviation Personalities accumulation including Victoria Cross recipients Sir Roden Cutler, W/O Keith Payne, Sgt RR Rattey, Cpl Jim Gordon, Pte Edward Kenna, Charles Upham, also Admiral Sir VAT Smith, Major-General Alan Streeton, Nancy Wake ("The White Mouse"), BP "Bob" Butler (AFC), Bruce Ruxton, Group Captain Sir Douglas Bader, Nancy Bird Walton, etc, on variety of covers up to 2000s, includes FDI cancels on pieces & some PSEs all set out on display pages, also many signatures & a few books & paintings by Commodore Dacre Smyth. <b>(4 large boxes; very heavy)(100s)</b>	300

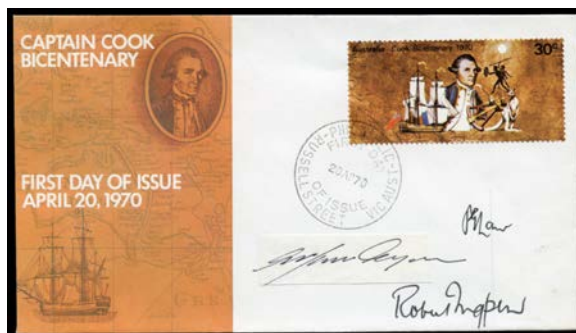
**Ex Lot 363**

<b>363</b>	C	A	- Antarctic group signed by Dr Phillip Law explorer & ANARE Director 1949-66 noted 1955 ANARE cover endorsed "Last Mail - Heard Island" with 'ANARE HEARD IS/9MR55/AUST' cds sent to himself, 1957 'Vestfold Hills, Antarctica' <i>real photo</i> postcard showing him raising Australian flag there, range of AAT Base cancels covers some also signed by stamp designer Ray Honisett, then large quantity of Australian covers up to 2000s signed by him and others including Malcolm Kirton (ANARE President), John Gillies, Ranulph Fiennes, etc, includes FDI cancels on pieces & some PSEs, all set out on display pages, plus some ephemera & photographs. <b>(7 large boxes; very heavy)(1000s)</b>	400
------------	---	---	---	-----

**COMMONWEALTH OF AUSTRALIA - First Day Covers (continued)**

Lot Type Grading Description

Est \$A

**Ex Lot 364**

364	C	A	- 1970 'Small Cook' Post Office-issue FDC with 30c tied 'RUSSELL STREET VIC AUST' cds signed by designer "Robert Ingpen" plus 'Large Cook' covers x2 and WSC cover with Cook M/S similarly signed & 'Melbourne Airport' overprinted M/S on separate cover, also 1970 Grasslands PO-issue x2 signed "Robert Ingpen", Expo70 PO-issue signed "Arthur Leydin" (designer of the 20c value), Royal Visit PO issue plus private covers x3 two signed "J Mason" designer, & <i>Excelsior</i> 5c Standard Gauge Railway cover signed by designer "Brian Sadgrove". (13)	400
-----	---	---	---	-----