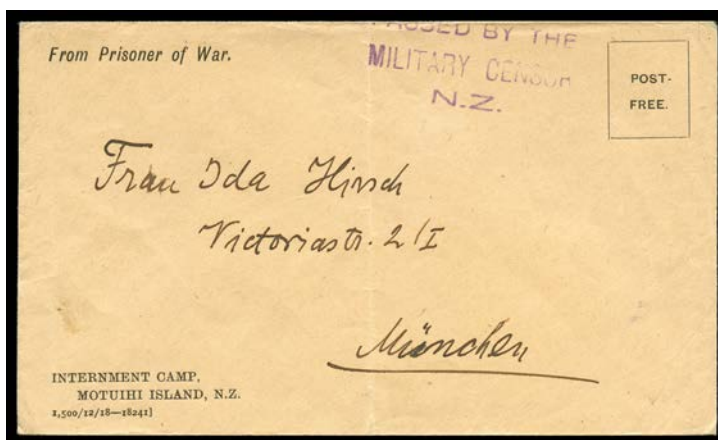


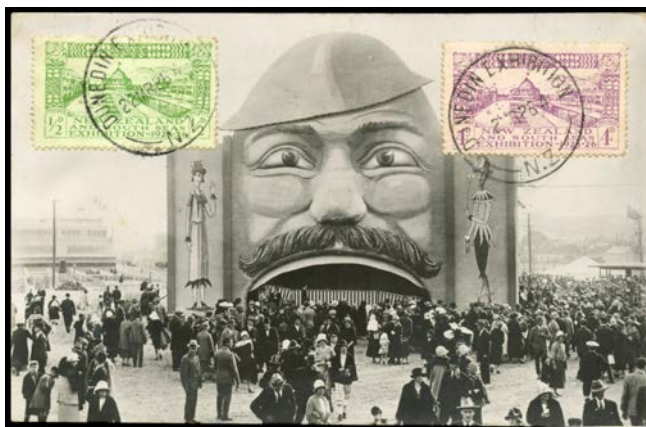
Lot	Type	Grading	Description	Est \$A
-----	------	---------	-------------	---------

**NEW ZEALAND - Postal History**

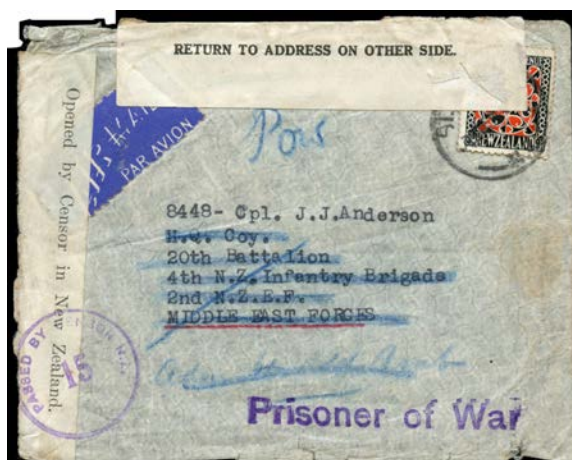
997	C	A	1901 Universal 1d tied by fine strike of 'NZ/GLENARY/1JA01/1' cds on plain First Day Cover to Dunedin.	200
998	C	B	1915 'FIELD SERVICE POST CARD' to Christchurch from Cpl Charles Alexander McKay (Medical Corps, Regimental # 3/152A) to his mother with fine Australian Army '2ND AUST INF BDE FIELD PO/19SE15' cds used at Gallipoli, minor creases and light foxing.	100

**Lot 999**

999	C	A-	1919 (circa) 'INTERNMENT CAMP/MOTUIHI ISLAND NZ' envelope with imprint '1500/12/18-18241' at L/L and printed 'From Prisoner of War' & 'POST-FREE' at top sent to Germany uncanceled, 'PASSED BY THE/MILITARY CENSOR/N.Z.' cachet on face, light central fold & couple of minor blemishes.	200 <sup>T</sup>
-----	---	----	---	------------------

**Lot 1000**

1000	C	A-	1926 Hugh & GK Neill Dunedin Exhibition real photo PPC of crowd in front of entrance to the Amusements Section with Exhibition 1/2d green & 4d violet tied to the viewside by 'DUNEDIN EXHIBITION/22MR26/NZ' cds, a couple of very minor aging marks.	200
------	---	----	---	-----

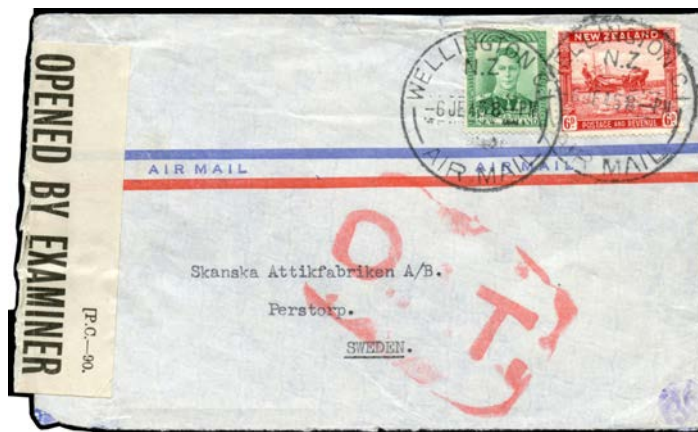
**Lot 1001**

1001	C	B	1941 airmail to "8448 Cpl JJ Anderson, HQ Coy, 20th Battalion, 4th NZ Infantry Brigade, 2nd NZEF, Middle East Forces" with Pictorials 9d Panel tied 'ST. KILDA/-1DE41' cds, censored with tape & cachet, endorsed "POW" in blue pencil with 'Prisoner of War' cachet in violet on face, returned & resealed with 'DEAD LETTER OFFICE NZ' label after being opened to locate sender, a few edge faults. Cpl John Joseph Anderson was captured on 2.1.1942 in the Western Desert as part of the Allied campaign to take Libya.	200
------	---	---	--	-----

**NEW ZEALAND - Postal History (continued)**

Lot Type Grading Description

Est \$A

**Lot 1002**

1002	C	A-	1945 to Sweden with KGVI 1d & Pictorials 6d Harvester tied 'WELLINGTON/NZ/-6JE45/AIR MAIL' cds paying special 7d rate for surface transmission to England and airmail to Sweden, censored locally with label and small '36' circle marking, large boxed 'OAT' cachet in red applied in London on face, couple of minor blemishes.	200
1003			1946 (circa) 'NEW ZEALAND PARCEL POST - CUSTOMS DECLARATION' complete form mounted on part of parcel cardboard wrapping sent to England with Peace 4d Tank & Pictorials 3/- Mt Egmont tied indistinct Wellington d/s, itemised list of contents including "4 Tablet Soap" valued at 7/7, a few blemishes.	200
1004	CPS		1970s & 1980s <i>International Youth Services</i> hoard of covers to Finland mostly by airmail including registered, taxed, advertising, instructional markings, some uprated stationery, huge variety of stamp issues, single & multiple frankings, the majority standard-size, a few over-size with higher values, potential postmark interest, condition generally fine. A wonderful study/re-sale opportunity. Weighs 30kgs+. (6000+)	300

**Lot 1005**

1005	CL	A	1987 to Germany with NZ Post 'EXPRESS POST INTERNATIONAL/...' label affixed on reverse, \$1 Bird and \$10 Arms strip of 3 tied Invercargill cds, Australian 'International/PRIORITY/POST' circular sticker added in transit and obscured by German 'Luftpostleitstelle/.../DATAPOST/No 881' label.	200
------	----	---	--	-----