

## SOLOMON ISLANDS

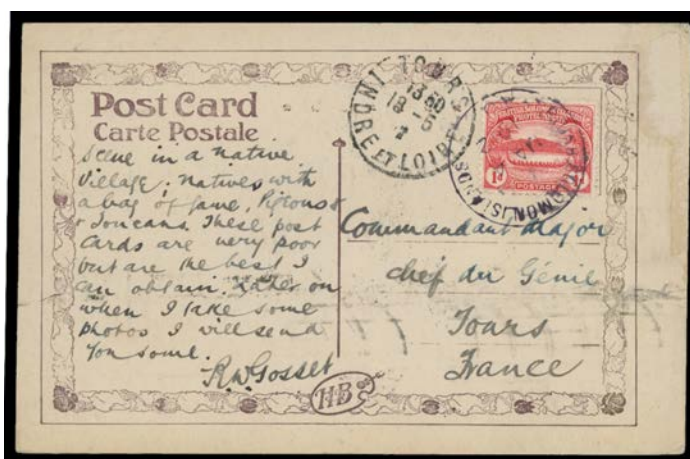


Lot 1028

**1028** C A- 1912 commercial usage of H&B PPC ('Aola...' - schooner at anchor) to France with Small Canoes 1/2 pair tied by two light but legible strikes of the rare 'BRITISH SOLOMON ISLANDS/MA4/1912/AOLA' cds (*Proud* #D1; LRD), French arrival cds of 18-5/12, minor crease. PO late-1908; closed mid-1912. [Aola is on the north coast of Guadalcanal. Aola (2) 20.10.1916; closed -.1.1919. Aola (3) mid-1920; closed mid-1922. Type D1 is rated 5000 points, which is **HUGE** for *Proud*. *John Darnell's* similar PPC with equally light strike sold at the *Prestige* auction of 5.12.2003 for \$1456]

The message, signed "RW Gossett", states "...The Austrian Scientific Expedition was lost & murdered in the hills in the interior of this island". *Ralph Wayth Gossett* was a prominent surveyor & geographer, born in New Zealand, who became an expert on Pacific Islands geography & history. He refers to an 1896 expedition lead by *Heinrich Foullon von Norbeck* which ventured into the interior where they were attacked & slaughtered by the natives]

1,500



Lot 1029

**1029** C A- - commercial usage of H&B PPC ('Aola...' - natives with game) to France with Small Canoes 1d tied by a largely very fine strike of the rare 'BRITISH SOLOMON ISLANDS/MA4/1912/AOLA' cds (*Proud* #D1; LRD), 'TOURS/18-5/12/INDRE ET LOIRE' arrival cds. The message, signed "RW Gossett" states "...natives with pigeons & toucans. These postcards are very poor but they are the best I can obtain..." [The Spanish found traces of gold on Guadalcanal as early as the 16th century. Several rushes in the late-19th century & before World War II were largely stillborn]

1,500