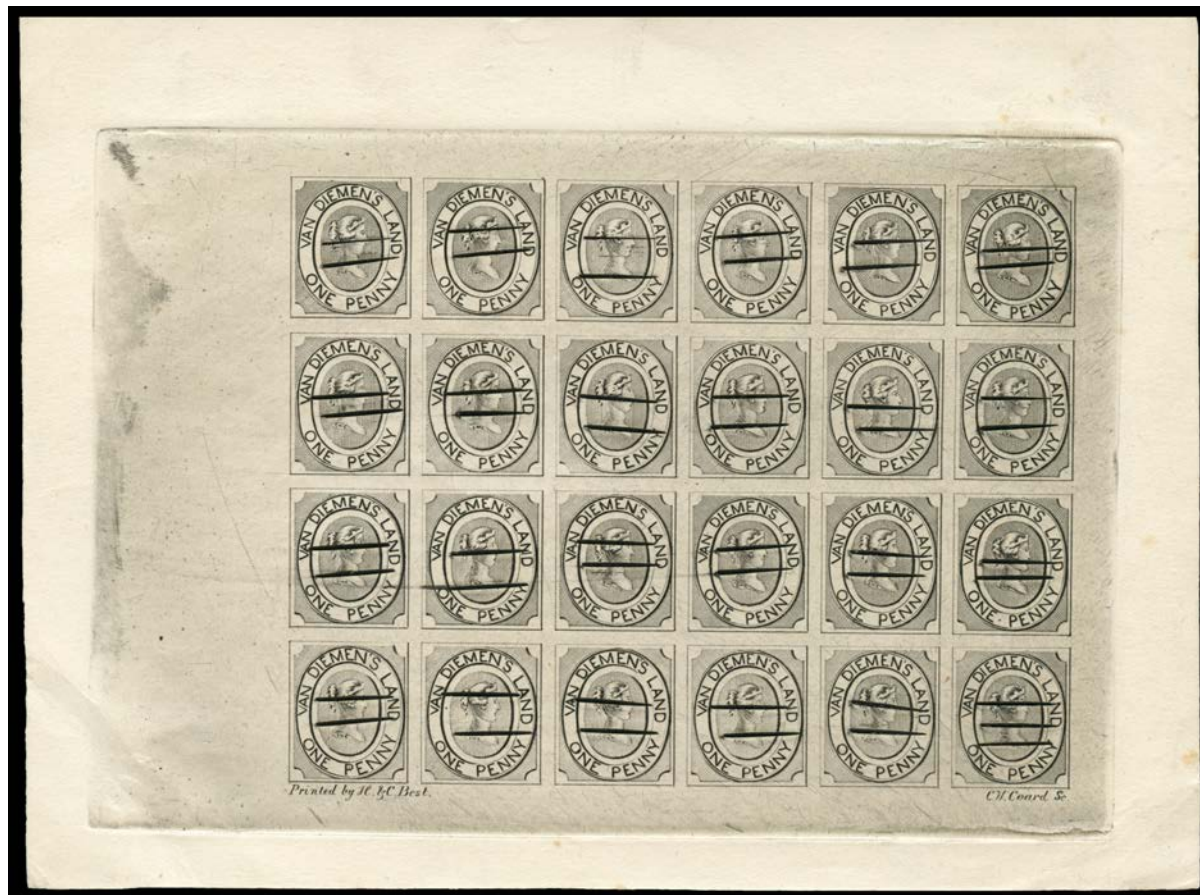


Lot Type Grading Description

Est \$A

**TASMANIA - REPRINTS**

698 P A/A+ **Annotated collection** on leaves with defaced *Couriers* all plated comprising Perf 11½ 1d x7 including a pair & 4d x4, imperf 1d in pale blue x27 including three blocks of 4 & 4d in orange from Plate I x17 including block of 4 with '*Printed by H & C Best*' Imprint and Plate II single & U/R corner block of 4, *Chalons* duplicated selection including imperf blocks of 4 without overprint & perf blocks of 4 with 'REPRINT' Overprint, 'Halfpenny' on 1d imperf block of 16 unusually on paper, Postal Fiscals perf blocks of 4 with 'REPRINT' & 5/- brown marginal block of 16 with 'REPRINT', generally very fine. A most unusual collection. (179)

1,500<sup>T</sup>**Lot 699**

699 P A- **1853 PENNY COURIER:** Defaced plate complete imperforate sheet of 24 **in black** on thick wove paper, a couple of minor blemishes. Rare. *Ex Carl Scheriani*. [Reprint sheets in black are much scarcer than those in colour]

1,500<sup>T</sup>

TASMANIA - REPRINTS (continued)

Lot Type Grading Description

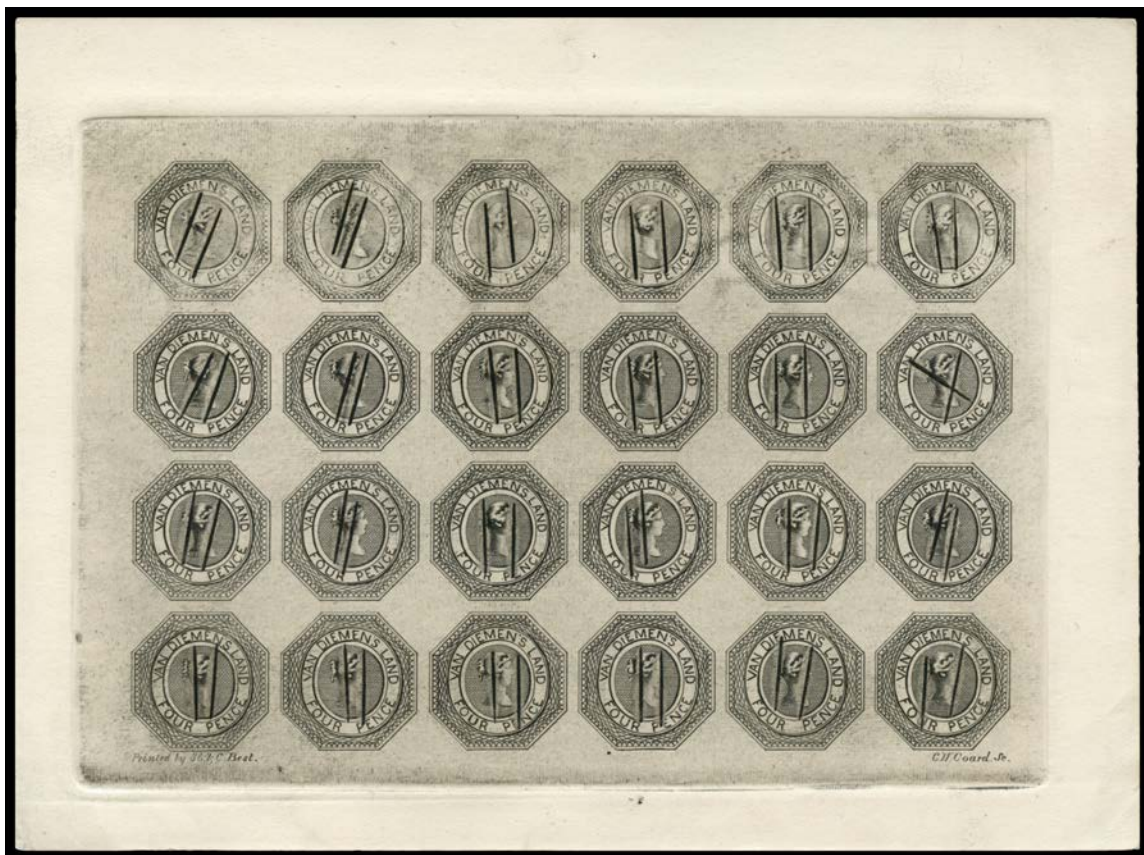
Est \$A



Lot 700

700 P A - Defaced plate complete imperforate sheet of 24 with both imprints, in pale blue on thick wove paper. *Ex Colonel Harrie Evans*: acquired at the *Prestige* sale of 4.5.2002 for \$1792. **NB:** 1d sheets are **much scarcer than the similar 4d sheets**.

1,500<sup>T</sup>



Lot 701

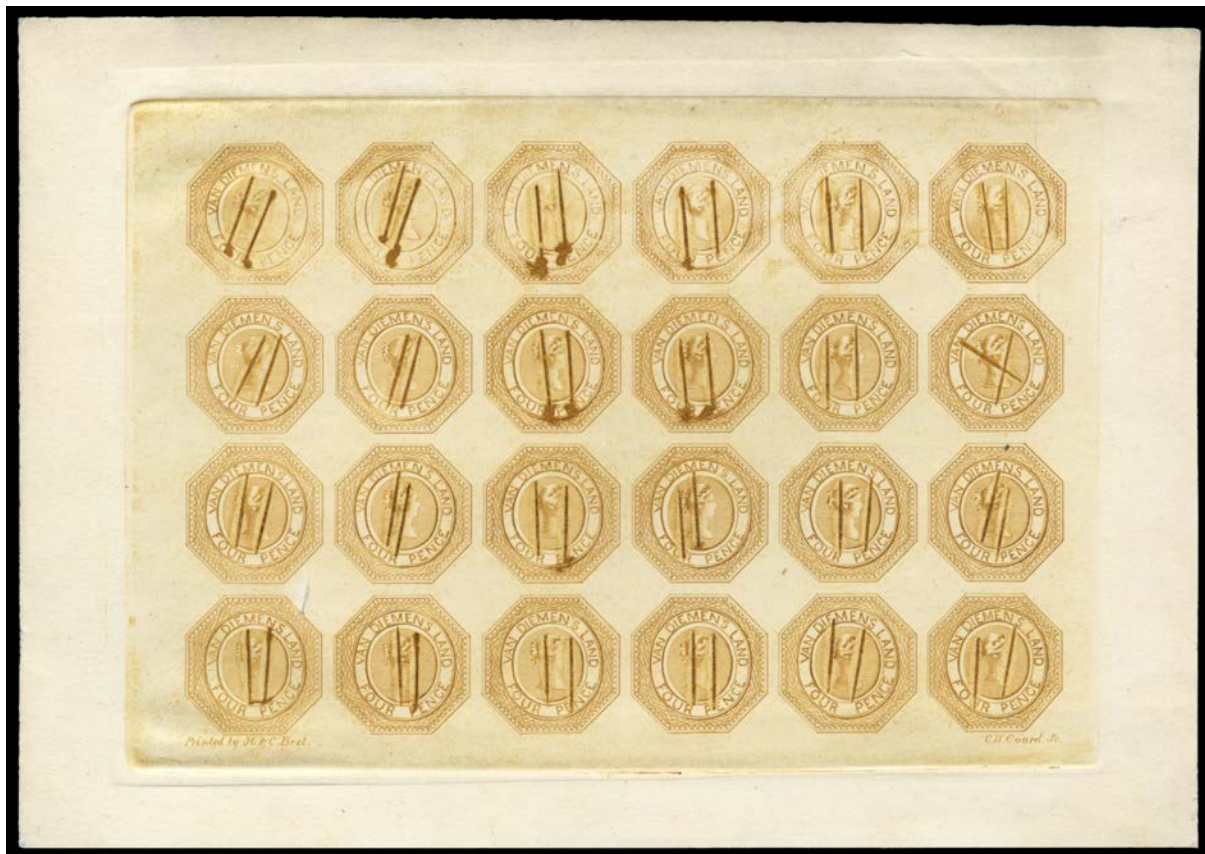
701 P A **1853 FOUR PENCE COURIER PLATE I:** Defaced plate complete imperforate sheet of 24 with both imprints, in black on thick wove paper, the upper row with significant plate-wear. *Rare. Ex Ron Butler.*

1,500<sup>T</sup>

TASMANIA - REPRINTS (continued)

Lot Type Grading Description

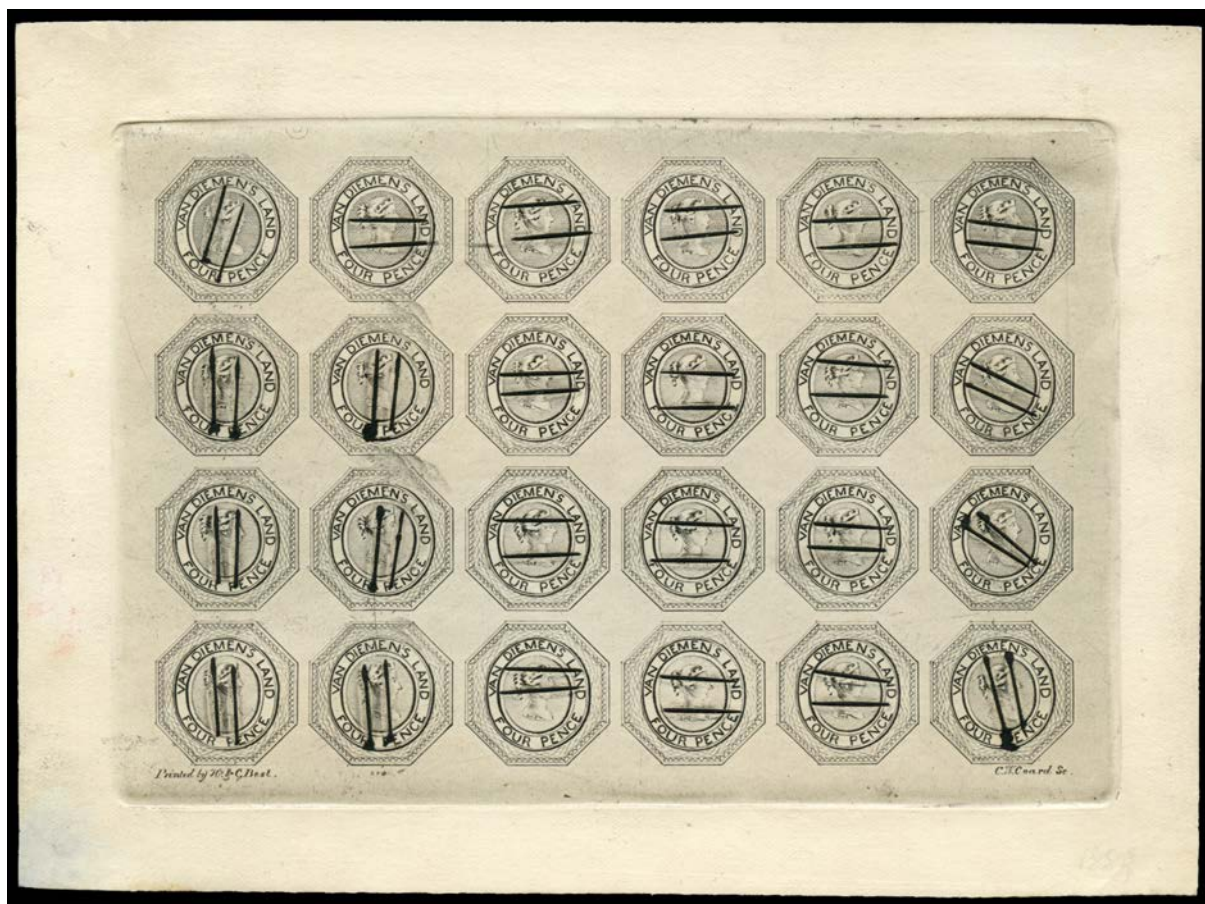
Est \$A



Lot 702

**702** P A - Defaced plate complete imperforate sheet of 24 with both imprints, in deep brown-orange on thick wove paper, the upper row with significant plate-wear, adhesive-tape residue on the reverse - noted when offered in 2002 - has been professionally removed. *Ex Colonel Harrie Evans*: acquired at the *Prestige* sale of 4.5.2002 for \$1064.

1,000<sup>T</sup>



Lot 703

**703** P A 1853 FOUR PENCE COURIER PLATE II: Defaced plate complete imperforate sheet of 24 with both imprints, in black on thick wove paper. *Ex Ron Butler*.

1,000<sup>T</sup>

TASMANIA - REPRINTS (continued)

Lot Type Grading Description

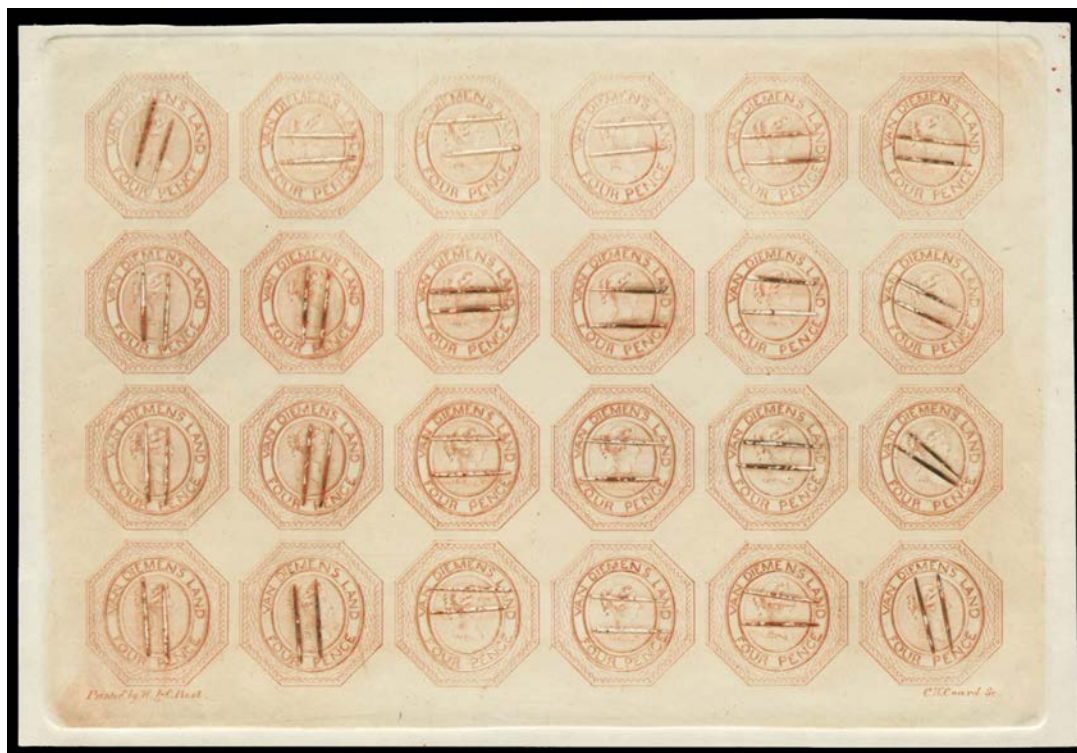
Est \$A



Lot 704

704 P A - Defaced plate complete imperforate sheet of 24 with both imprints, in yellow on thick wove paper, several units showing significant plate-wear. *Ex Les Doble*.

1,000<sup>T</sup>



Lot 705

705 P A - Defaced plate complete imperforate sheet of 24 with both imprints, in red-orange on thick wove paper, more significant plate-wear affecting more units, the outer sheet margins removed. *Ex Les Doble*.

800<sup>T</sup>

**TASMANIA - REPRINTS (continued)**

Lot	Type	Grading	Description	Est \$A
-----	------	---------	-------------	---------

**Lot 706**

<b>706</b>	P	A+	<b>1855 CHALONS INSCRIBED 'VAN DIEMENS LAND'</b> : Progressive die proof with extended framelines & 'VAN DIEMENS LAND' yet to be entered, in scarlet-vermilion on thin card. <b>Beautiful! Ex Ron Butler.</b>	750 <sup>T</sup>
------------	---	----	---	------------------

**Lot 707**

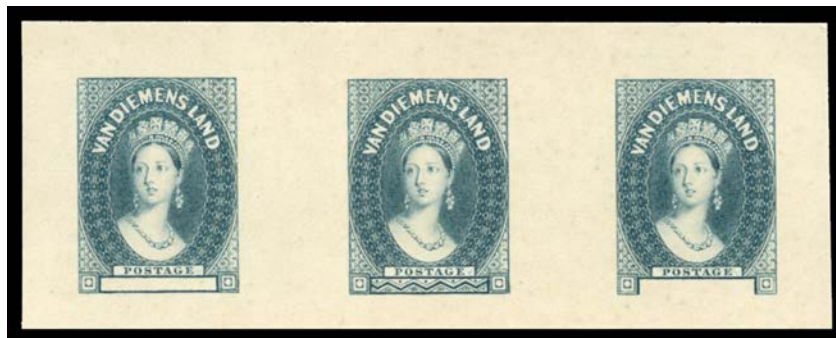
<b>707</b>	P	A	- Die proof with filled value tablet, in scarlet-vermilion on thick card with a proof of the Sideface Head as used for Turks Islands also in scarlet-vermilion below. [Stated to be from a 1902 book of printer's samples]	250 <sup>T</sup>
------------	---	---	--	------------------

**Lot 708**

<b>708</b>	P	A	- Die proof with filled value tablet, in carmine on gumméd Multiple Rosettes Watermark paper. Rare: the only such watermarked reprinted proof we have seen. [The Rosettes paper was used for the 1901-05 Lakatois of Papua & 1898-1913 issues of Zanzibar]	250 <sup>T</sup>
------------	---	---	--	------------------

TASMANIA - REPRINTS (continued)

Lot Type Grading Description Est \$A



Ex Lot 709

709	P	A/A+	- Collection of die proofs with void or filled value tablet, in black or various colours on paper or card including large die proofs in black & in carmine (with <i>Ceremuga Certifica</i> ), in carmine recessed in geen paper & three different proofs in grey-blue on a single piece. A very fine & attractive display. [These are stated to have been produced in 1919 and/or 1929. We expect that most, if not all, were samples for colour selection for invitation cards printed by <i>De La Rue</i> for the <i>Hampshire Philatelic Society</i> ] (28 items)
-----	---	------	--

750<sup>T</sup>



Lot 710

710	P	A-	<b>1855 CHALONS INSCRIBED 'TASMANIA':</b> Progressive die proof with external ornamentation & before the inscriptions were entered, in scarlet-vermillion on thin card, the engine-turning at right defective (rubbed?). <i>Ex David McNamee.</i>
711	**	A	<b>POSTAL FISCALS:</b> 1863-80 St George & the Dragon 2/6d carmine & 10/- yellow-orange with 'REPRINT' Overprint perforated blocks of 50 (10x5) on thick gummed paper from the base of the sheets, virtually full unmounted o.g. (2 blocks)

250<sup>T</sup>

1,000<sup>T</sup>