

Lot Type Grading Description

Est \$A

UNITED STATES OF AMERICA - Postal History**Lot 1035**

1035 C A **1877** to New Zealand with Banknotes Washington 3c green strip of 4 tied segmented cork cancels and 'DAVENPORT/FEB/21/IOWA' d/s alongside paying 12c ship letter rate, Auckland transit and 'TAURANGA/AP 2/1877/NEW ZEALAND' arrival b/s, docketed "Answered May 30th/77" on face, very neat.

250

**Lot 1036**

1036 C A **1944** airmail to American airforce serviceman "F/O Leebert W McFarland T-61972, American Internee, Camp Maloney, Abelboden [sic]" held in Switzerland endorsed "PRISONER OF WAR MAIL" with *Prexies* 10c & 12c and 8c Transport tied 'KEY WEST/AUG 3/1944/FLA' cancels paying 30c airmail rate for carriage by PanAm FAM-18 *Atlantic Clipper* service to Europe, censored with US tape and again in Germany with Berlin label & cachet on back, released with Swiss boxed 'Zustellen/Feldpostdirektion' cachet in red on face.

Camp Maloney was the name given to the part of Adelboden that housed American airmen shot down over Germany who had managed to fly their damaged planes to Switzerland, where the crew were interned for the remainder of WWII. Located in the Alps south of Berne, Adelboden was a summer resort and its hotels were used to house the internees. The 'Camp' was named after Sgt Joseph Maloney, a ball-turret gunner on a B-17 that crashed into Lake Constance, making him the first US airman to die in Switzerland.

300

**Lot 1037**

1037 C B **1945** airmail cover to liberated POW MS Kahn c/o "Netherlands Marines, PO Box 558, Colombo, Ceylon" with Transports 10c & 30c x2 tied New York Bronx Station 'DEC26/1945' cancels paying 70c pre-WWII Pacific Clipper rate, censored on arrival with 'MARINE POSTKANTOOR BATAVIA/No.15' cachet endorsed "Soerabaja 14/1/46", a couple of minor wrinkles & edge faults. Presumably this was an undercover address used by the Royal Netherlands Navy to receive mail during the Japanese Occupation of the Netherlands Indies and continued in use until proper postal facilities could be established after liberation; a most unusual destination.

200

UNITED STATES OF AMERICA - Postal History (continued)

Lot Type Grading Description

Est \$A



Lot 1038

- 1038** C A- **1962** picture postcard (Native American) airmail to Germany with single franking *Prexies* 11c Polk (one toned perf) tied 'FOUNTAIN/MAR/16/1962/COLO' cancel. [Late but entirely commercial usage: by the time the airmail postcard rate increased from 10c to 11c on 1.07.1961 the *Prexies* had been replaced by the *Liberty* series of which the 11c value was issued on 15.06.1961 for this very purpose]

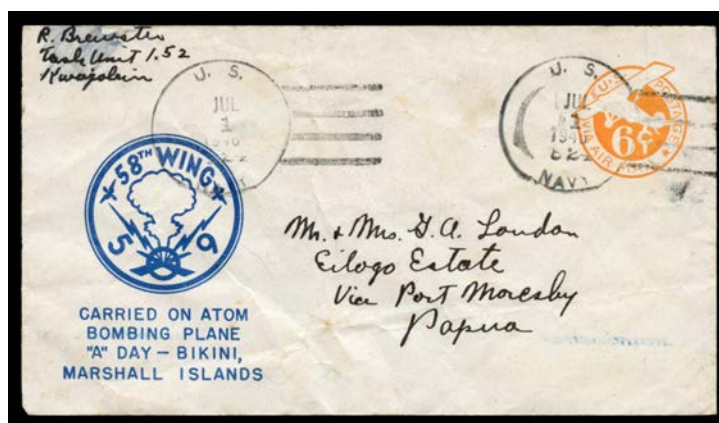
200



Lot 1039

- 1039** C A- **AMERICAN SAMOA**: 1945 (Jan 24) cover to Massachusetts with 'VIA AIR MAIL' indicia endorsed "from Honolulu" and franked *Prexies* 10c Tyler pair - paying for airmail carriage from Hawaii to US and internally only - tied 'PAGO PAGO/SAMOA' cancel, censored with brown tape tied 'PASSED BY CENSOR/American/Samoa' on face, couple of minor edge faults.

200



Lot 1040

- 1040** C A- **BIKINI ATOLL ATOMIC BOMB TEST**: 1946 (July 1) 6c Airmail Envelope with printed 'CARRIED ON ATOM BOMBING PLANE "A" DAY - BIKINI, MARSHALL ISLANDS', to Papua (!) with 'US/ 824 /NAVY' cancel & "R Brewster, Task Unit 1.52, Kwajalein" return address, minor blemishes. [The first post-WWII atomic test was conducted on 1.7.1946 when the bomb 'Able' was dropped over Bikini Atoll by a B-17 Flying Fortress operating from the US airbase on Kwajalein Atoll, Marshall Islands]

200