

Lot Type Grading Description

Est \$A

NEW GUINEA (German) - Forerunners

The German Protectorate of New Guinea was declared in 1884 over the Kaisers-Wilhelmsland mainland and expanded in 1885 to include Neu-Pommern (New Britain) and the Bismarck Archipelago. The first postal facilities were established in 1888 using un-overprinted German stamps (so-called 'Vorläufer' usage) until the first 'Deutsch New-Guinea' overprints were issued in late-1897.

**Lot 2524****2524** C

A-

1889 (Oct 7) cover from Wurttemberg with 10pf pair tied by 'URACH' cds to "Finschhafen/Kaiser Wilhelmsland/Neu Guinea" & endorsed "Via Genoa", 'GENOA' & 'SOERABAJA' transit backstamps, surprisingly fine for such an early inwards item. Ex Fred Pearson & Michael Courtis: acquired for \$2340 at the Mossgreen auction of 19.6.2015. [The first postal agency in German New Guinea opened at Finschhafen 15.2.1888, and closed 19.3.1891. **This is one of the earliest inwards items to New Guinea** that we have seen. The addressee, Dr Carl Weinland was Medical Officer with the Neu-Guinea Compagnie.

2,000^T**Lot 2525****2525** C

A-

- commercial cover to Germany with doubled but still very fine strike of the rare 'KERAWARA/3 12/89' cds, Berlin arrival b/s of '19/2' (1890), ironed-out vertical fold. This cover would have been carried on the "Otilie" to Soerabaja. A rare cover from this small outpost. PO -.5.1888; replaced by Herbertshohe -.6.1890. Ex Michael Courtis: acquired for \$7187 at the Prestige auction of 12.10.2012. [Kerawara, Mioko & Kabakon are small islands in the Prince of Wales group. Kerawara is less than 1 square kilometre in size]

6,000^T

NEW GUINEA (German) - Forerunners (continued)

Lot Type Grading Description

Est \$A



Lot 2526

2526 C A - (Dec 28) inwards cover to *Dr Weinland* at "Stefansort" (sic) with Wurttemberg 10pf x2 tied by 'REUTLINGEN' cds, largely very fine 'FINSCHHAFEN/24 4/90' arrival b/s, minor blemishes. [*Dr Carl Weinland* died of malaria at Finschhafen in March 1891]

1,500^T



Lot 2527

2527 C C **1890** commercial cover to Germany with very fine strike of the rare 'KERAWARA/3 1/90' cds, 'OLDENBURG/1.4.90' arrival b/s, some staining/aging. *Michal Jaschke-Lantelme Certificate* (2015).

2,500^T

NEW GUINEA (German) - Forerunners (continued)

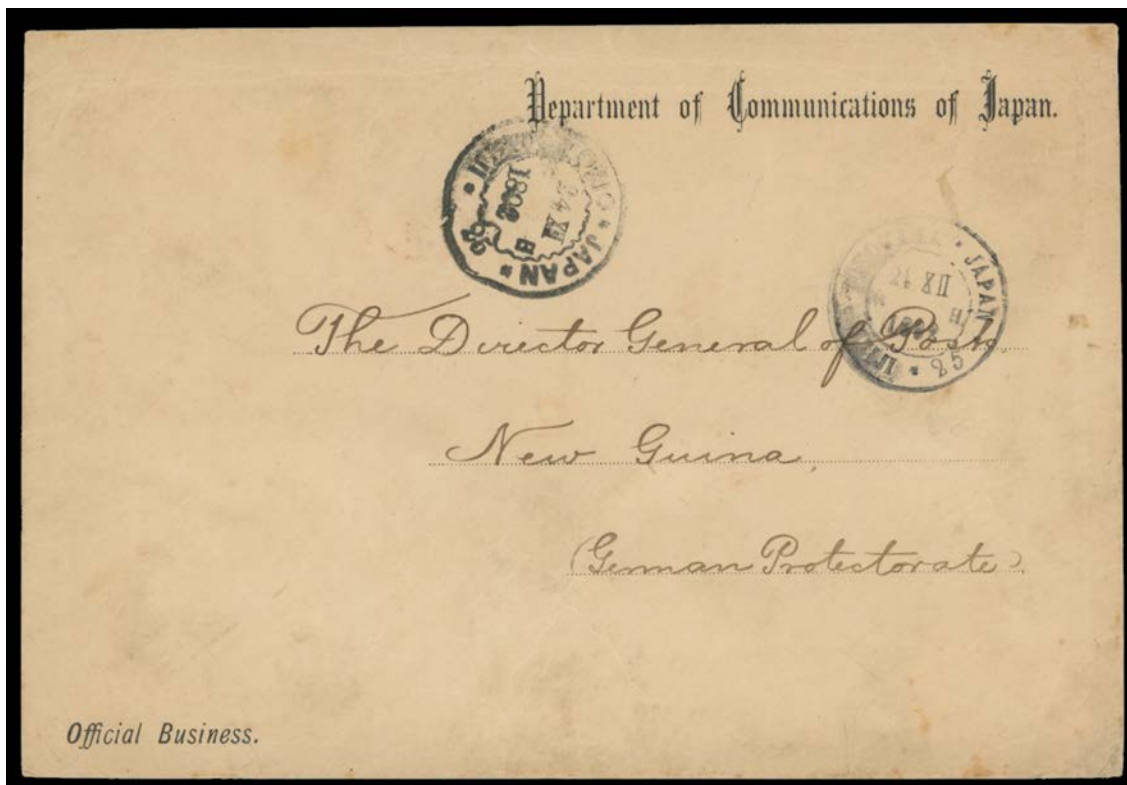
Lot Type Grading Description

Est \$A



Lot 2528

2528	PS	A-	1891 usage of 10pf Envelope to Netherlands Indies with an almost fine strike of the rare 'HATZFELDTTHAFEN/23 6/91' cds uprated with 5pf x2 & 20pf tied by three further poor to fair strikes of the cds, imperforate registration label (Einfeldt #1, fault at lower-left, gum-stained), 'SOERABAIJA' & 'WELTEVREDEN' transit & 'AUSG' arrival b/s. PO 1.4.1888; closed 30.9.1891. Ex Michael Courtis: acquired at the Prestige auction of 12.10.2012 for \$2645. [Carried by the steamer "Schwalbe" on its second New Guinea-Singapore run. Hatzfeldhafen is a small settlement on the central north coast of Madang Province]	2,000 ^T
2529	C	B	1892 commercial cover to Germany with 5pf x2 10pf & 20pf tied by very fine strikes of the 'STEPHANSORT' cds, unusually with no backstamps, central fold.	200 ^T



Lot 2530

2530	PS/C	B	- stampless envelope with 'Department of Communications of Japan' imprint at U/R & 'Official Business' at L/L, to 'The Director-General of Posts/New Guinea [sic]/German Protectorate' with 'TOKIO * JAPAN * XII/1892/MEIJI 25' & similar Yokohama cds, Hong Kong & Sydney transit b/s, with the enclosed New Year greeting card in French with gold-embossed stylised Chrysanthemum, both a bit aged. A remarkable origin/destination duo.	500 ^T
------	------	---	---	------------------

NEW GUINEA (German) - Forerunners (continued)

Lot Type Grading Description

Est \$A

**Lot 2531**

2531 C C **1893** cover with 'NEU GUINEA COMPAGNIE' imprint at top, to Germany with 5pf x2 20pf & 50pf (stained) tied by 'STEPHANSORT/1 4/93' cds & first-type 'Stephansort' 'R' label, superb 'FRIEDRICH-WILHELMSHAFEN' transit cds unusually on the face & Kiel arrival b/s of 31.5.93, a few faults.

500^T**Lot 2532**

2532 PS A- - usage of 10pf Envelope (147x104mm) to Germany with 3pf pair & 5pf tied by very fine 'HERBERTSHOH/20 11/93' cds, 'GERA' arrival b/s of 6.1/94. Ex Michael Courtis.

350^T

2533 C A-/A **1896 & 1898** covers to Germany with 20pf & 'FRIEDRICH-WILHELMSHAFEN' cds, the first from a mission endorsed "Schwester Augusta" [= Sister Augusta] on the flap (2)

300^T

NEW GUINEA (German) - Forerunners (continued)

Lot Type Grading Description

Est \$A



Lot 2534

2534 C B 1897 cover with 'Hernsheim & Co/---97/MATUPI/Bismarck-Archipel' cachet across the flap, to Hong Kong "via Singapore" with 20pf pair tied by very fine 'STEPHANSORT/7 6/97' cds, 'SINGAPORE' & poor 'SINGAPORE/TO HONG KONG' marine-sorter b/s, minor blemishes.

400^T

Lot 2535

2535 C B 1898 cover to Germany with 20pf pair tied by two fair to fine strikes of the 'MATUPI' cds, imperforate registration label (Einfeldt Type 1), 'FREIBURG' arrival b/s, minor blemishes. Ex Michael Courtis: acquired for \$661.

600^T