

Lot Type Grading Description

Est \$A

**NEW GUINEA - 'G.R.I.' SURCHARGES - Postal History**

There has been a degree of controversy surrounding the GRIs ever since Postmaster Sgt Moore was court martialled on his return to Sydney. However, he was charged only with selling to himself & another officer stamps of greater value than the imposed limit of 10/- per person. The fact remains that the GRI overprints were properly authorised, properly issued, and properly postally used by both the military and civilian populations of the former German New Guinea. This is by far the largest selection of commercial GRI covers that we have offered.

2574	C	A	<b>LOCAL LETTERS:</b> 1915 (Jan 4) cover endorsed "Rabaul Garrison" to "L Lehmeier/Headquarters Staff" with 5mm Setting '1d.' on DNG 5pf SG 17 tied by oval Rabaul datestamp in violet. [Pte Lehmeier arrived on the 'Berrima', the first Australian ship to reach New Guinea. He was eventually promoted to Captain]	200 <sup>T</sup>
------	---	---	---	------------------



Lot 2575

2575	C	B	- 1915 (Jan 4) double-rate cover to "Cpl P Hayes/QM Section A Coy/Barracks" with 5mm Setting '2d.' on DNG 10pf as SG 18 but with 'R.I.' Closer tied by oval Rabaul datestamp in violet, flap removed. German PS (USA) Certificate (1975).	250 <sup>T</sup>
------	---	---	---	------------------



Lot 2576

2576	C	C	- 1915 (Apr 3) to "FM Johnson/Lands Office" with 'O.S./1d.' on 3pf SG O1 and 'G.R.I./3d. - Rabaul/(Deutsch Neuguinea)' registration label SG 33 - short perfs at left - both tied by oval Rabaul datestamp in violet, minor soiling & an amateurishly repaired tear at upper-left. Ex "Bismarck": sold at the Prestige auction of 19.7.2003 for \$1287. [Registered local covers are rare]	1,250 <sup>T</sup>
------	---	---	--	--------------------

2577	C	B	- 1915 (May 4) cover to "Harbor Master" with 'O.S./1d.' on 3pf SG O1 tied by oval Rabaul datestamp in violet, minor blemishes.	300 <sup>T</sup>
------	---	---	--	------------------



Lot 2578

**NEW GUINEA - 'G.R.I.' SURCHARGES - Postal History (continued)**

Lot	Type	Grading	Description	Est \$A
2578	C	A-	- 1915 (Apr 3) OHMS cover to "Director of Supplies" with 'O.S./1d.' on 3pf SG O1 tied by boxed 'RABAU/3APR1915' d/s in blue ( <i>Powell</i> #54; rated G), the cover truncated at left. [At least the equal of the "Elio" cover to NSW that sold for \$1322]	1,250 <sup>T</sup>
2579	CL	B	- 1915 (May 5) OHMS cover to "OC Troops" with 'O.S./1d.' on 3pf SG O1 tied by oval Rabaul datestamp in violet, two vertical folds.	300 <sup>T</sup>

**Lot 2580**

2580	C	A	<b>OTHER INTERNAL MAIL:</b> 1915 (Jan 4) double-rate cover to "Cpl Stanton/.../Madang" with '2d.' on Marshalls 10pf SG 52 and 'G.R.I./3d. - Rabaul/(Deutsch Neuguinea)' registration label SG 33 tied by three superb strikes of the oval Rabaul d/s in violet. [4.1.1915 was probably the <b>First Day of Issue</b> of the surcharged registration labels. It is therefore possible that this cover, though a significant item, is philatelic]	1,500 <sup>T</sup>
------	---	---	---	--------------------

**Lot 2581**

2581	C	B	- 1915 (Jan 8) double-rate cover to "S Scott/Madang" with 6mm Setting '2d.' on DNG 20pf SG 4 tied by fine oval Rabaul d/s in violet, minor blemishes. <i>German PS (USA) Certificate</i> (1975).	350 <sup>T</sup>
------	---	---	--	------------------

**Lot 2582**

2582	C	C	- 1915 (Mar 2) <i>Gerstenberg</i> PPC ('Gruss aus Herbertshoh') to "N Mecklenberg" with '1d.' on Marshalls 5pf SG 51 tied by oval Rabaul d/s of 'MAR 10 1915' in violet, reinforced along vertical fold.	400 <sup>T</sup>
------	---	---	--	------------------

## NEW GUINEA - 'G.R.I.' SURCHARGES - Postal History (continued)

Lot Type Grading Description

Est \$A



Lot 2583

**2583** C B **MAIL TO AUSTRALIA:** 1914 cover endorsed "Garrison Duty/Rabaul" at U/L & "D Coy No 947" at L/L, to Sydney with 6mm Setting '1d.' on DNG 5pf SG 2 tied by '-\*RABAUL\*/Oct 29 1914' d/s in violet & very fine Sydney machine of NO20-1914 arrival, minor opening faults at the top & a little soiled. *Jurgen Kilian Certificate* (1990).

1,000<sup>T</sup>

Lot 2584

**2584** C B - 1915 (Jan 14) overpaid but apparently official cover endorsed "Garrison Duty/Rabaul" at U/L & "No 118/HLH/Treasury" at L/R plus "Censored/[?] Capt/14 1 15" in red, to "Captain Carter/HMA Transport/Eastern/co Gibbs Bright & Co/Sydney" with remarkable combination franking of '2d.' on Marshalls 20pf plus **NWPI** 1d & 2½d and 'G.R.I./3d. - Rabaul/(Deutsch Neuguinea)' registration label SG 33 all tied by oval Rabaul d/s in violet, 'REGISTERED/SYDNEY NSW' arrival cds ties 'KAISERL HAUPTKASSE/[eagle]/RABAUL' wafer to the flap, horizontal fold.

1,500<sup>T</sup>



## NEW GUINEA - 'G.R.I.' SURCHARGES - Postal History (continued)

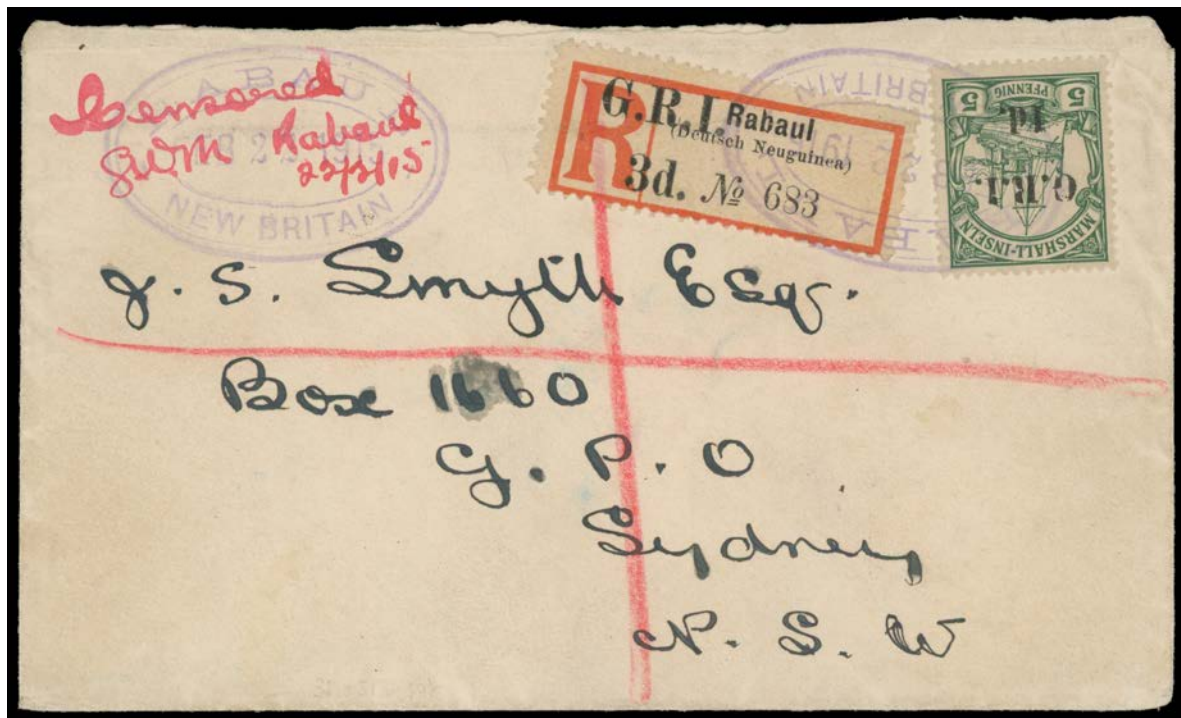
Lot Type Grading Description

Est \$A



Lot 2585

- 2585 C A- - 1915 (Feb 4) cover addressed with *Sgt Moore's* distinctive typewriter, to Victoria with '2d.' on Marshalls 10pf SG 52 & 'G.R.I./3d. - Rabaul/(Deutsch Neuguinea)' registration label SG 33 tied by oval Rabaul d/s in violet.

800<sup>T</sup>

Lot 2586

- 2586 C A- - 1915 (Feb 22) cover addressed in *Sgt Moore's* distinctive hand & endorsed by him "Censored/GWM Rabaul/22 2 15" in red at U/L, to NSW with '1d.' on Marshalls 5pf SG 51 & 'G.R.I./3d. - Rabaul/(Deutsch Neuguinea)' registration label SG 33 tied by oval Rabaul d/s in violet, 'REGISTERED/6MR15/SYDNEY NSW' arrival b/s just ties one of three 'KAISERL DEUTSCHE POSTAGENTUR' wafers sealing the flap, a few blemishes mostly on the reverse. *BPA* (1981) & *Briefmarkenprüfstelle Basel* (2004) Certificates.

A famous item, & one of the most attractive GRI covers. Illustrated by *Robert Gibbs* at page 21 where he quotes from the summons to stamp dealer *JH Smyth* to appear at *Sgt Moore's* court martial & to produce this envelope & the contents thereof. *Martin Eichele* states on the later certificate "Possibly the most important cover as evidence of the philatelic history of these issues".

2,500<sup>T</sup>

## NEW GUINEA - 'G.R.I.' SURCHARGES - Postal History (continued)

Lot Type Grading Description

Est \$A



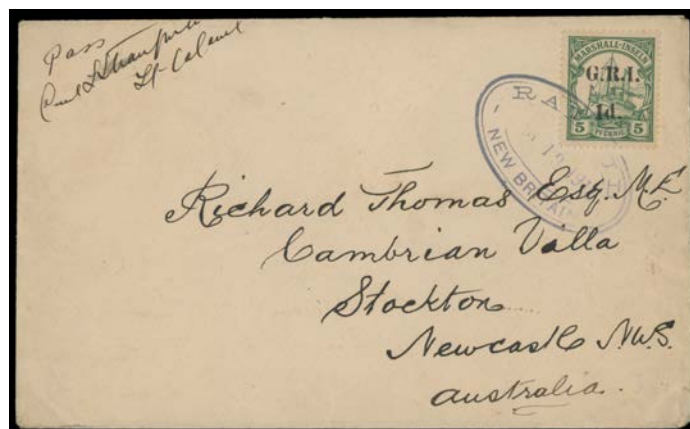
Lot 2587

- |      |   |   |  |                  |
|------|---|---|--|------------------|
| 2587 | C | B | - 1915 (Jan 26) double-rate cover endorsed "SD Thompson/Tropical force/via Rabaul" at U/L & "Passed by/Censor/CWC" in red at L/L, to Melbourne with '2d.' on Marshalls 20pf SG 53 tied by oval Rabaul d/s in violet, minor blemishes. Ex "Ello": sold for \$1380. ["via" in the sender's endorsement suggests the sender was some way distant from Rabaul] | 800 <sup>T</sup> |
|------|---|---|--|------------------|



Lot 2588

- |      |   |   |  |                  |
|------|---|---|--|------------------|
| 2588 | C | C | - 1915 (Feb 20) OHMS cover - the header crossed-through - with 'Naval Office/Newcastle' imprint at L/L amended to "Rabaul" & signed "Lt OW Gillam RANR", to NSW with '1d.' on Marshalls 5pf SG 51 tied by oval Rabaul d/s in violet, redirected to Victoria & twice more locally, a few faults including a chunk missing at U/L still quite appealing. | 300 <sup>T</sup> |
| 2589 | C | B | - 1915 (Feb 27) cover to Sydney with 'O.S./1d.' on DNG 3pf tied by oval Rabaul d/s in violet, minor blemishes.   | 300 <sup>T</sup> |



Lot 2590

- |      |   |    |   |                  |
|------|---|----|---|------------------|
| 2590 | C | A- | - 1915 (Mar 19) cover with Eastern & Australian Steamship Co embossing on the flap, endorsed at U/L "Pass/Paul L [ ? ]/Lt Colonel", to NSW with '1d.' on Marshalls 5pf SG 51 tied by oval Rabaul d/s in violet, Sydney arrival b/s of 3AP-1915. | 500 <sup>T</sup> |
|------|---|----|---|------------------|

## NEW GUINEA - 'G.R.I.' SURCHARGES - Postal History (continued)

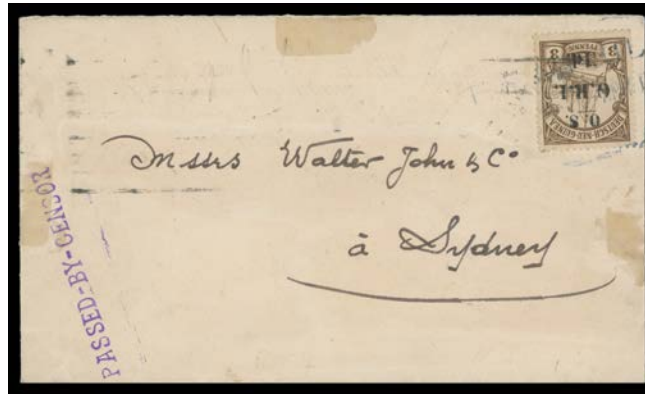
Lot Type Grading Description

Est \$A



Lot 2591

**2591** C A- - 1915 (Mar) cover to Sydney with '1d.' on Marshalls 5pf pair tied by oval Rabaul d/s in violet, very fine 'HUNTERS HILL/3AP1915/NSW' arrival b/s. *BPA Certificate* (1980).

400<sup>T</sup>

Lot 2592

**2592** C B - 1915 (Apr) cover to NSW with 'O.S./1d.' on DNG 3pf tied by a poor but readily identifiable strike of the rare boxed 'RABAUL/[date]' d/s in blue (*Powell #54*; rated G), Sydney arrival b/s of AP17-1915, hinge remainders on the face. *Jurgen Kilian Certificate* (1984).

500<sup>T</sup>

Lot 2593

**2593** C A- - 1915 (May 18) cover to NSW with rare **combination franking** of unoverprinted KGV 4d orange plus 'G.R.I./3d. - Rabaul/(Deutsch-Neuguinea)' registration label SG 33d tied by oval Rabaul d/s in violet, seriffed 'CENSORED' h/s in violet on both sides, 'PETERSHAM/3JE15/NSW' arrival b/s, light vertical fold affects the 'R' label.

1,500<sup>T</sup>



## NEW GUINEA - 'G.R.I.' SURCHARGES - Postal History (continued)

Lot Type Grading Description

Est \$A



Lot 2594

- 2594** C B - 1915 (June 8) Burns Philp cover (seal on flap) to head office in NSW with rare **combination franking** of Australian Kangaroo 3d punctured 'OS' plus 'G.R.I./3d. - Rabaul/(Deutsch-Neuguinea)' registration label SG 33d - stained by the adhesive used - tied by superb oval Rabaul d/s in violet, superb 'PASSED BY CENSOR' h/s of Rabaul, 'REGISTERED/21JE15/SYDNEY NSW' arrival b/s, a few blemishes. *RPSofV Certificate* (1985).

1,000<sup>T</sup>

Lot 2595

- 2595** C A- - 1915 (June 8) cover to NSW with '1d.' on Marshalls 5pf plus 'G.R.I./3d. - Rabaul/(Deutsch Neuguinea)' registration label SG 33 - a couple of short perfs - tied by oval Rabaul d/s in violet, 'HUNTERS HILL/21JU1915/NSW' arrival b/s, *Bothe* guarantee h/s on the reverse. *German PS (USA) Certificate* (1975).

800<sup>T</sup>

Lot 2596

- 2596** C B - 1915 (June 22) cover to Kodak in NSW "Per SS Morinda" with rare **combination franking** of NWPI KGV 1d (perf fault at L/R) plus 'G.R.I./3d. - Rabaul/(Deutsch-Neuguinea)' registration label SG 33d - exceptional centring, a couple of short perfs & a little grubby - tied by oval Rabaul d/s in violet, 'REGISTERED/10JL15/SYDNEY NSW' arrival b/s. *Ex "Elio"*: sold for \$1150.

1,000<sup>T</sup>

**NEW GUINEA - 'G.R.I.' SURCHARGES - Postal History (continued)**

Lot Type Grading Description

Est \$A

**Lot 2597**

**2597** C B **MAIL TO ENGLAND:** 1915 (Mar 1) cover endorsed "OHMS" in blue-pencil, to Cheshire with 'O.S./1d.' on DNG 3pf SG O1 [3] tied by oval Rabaul d/s in violet, light vertical fold & minor wrinkling, the flap sealed with 'Marshall Inseln' 5pf selvedge. Ex "Ello". Peter Holcombe Certificate (1989).

600<sup>T</sup>**Lot 2598**

**2598** C B - 1915 (Mar 29) cover endorsed "Censored/Oscar W Gillam Lt/RHM/Rabaul" in red at U/L, to Devonshire with 5mm Setting '1d.' on DNG 5pf SG 17 tied by oval Rabaul d/s in violet, superb strike of the 'PASSED-BY-CENSOR' h/s in violet, Sydney transit b/s of 3AP-1915 & 'NEWTON-ABBOT/16MY/15' arrival b/s, minor defects.

500<sup>T</sup>**Lot 2599**

**2599** C C - 1915 (Mar) cover with '1d.' on Marshalls 5pf tied by 'STEPHANSORT/----/13' 'frozen' cds in blue, '3rd Batt N and M Forces/Trop Unit' & 'PASSED-BY-CENSOR/JW BELL CAPT' cachets both in violet, Sydney transit b/s of 7AP-1914 & 'WORCESTER PARK/16MY/15' arrival b/s, minor blemishes & ironed-out folds.

650<sup>T</sup>



## NEW GUINEA - 'G.R.I.' SURCHARGES - Postal History (continued)

Lot Type Grading Description

Est \$A



## Lot 2600

**2600** C A - 1915 (Apr 5) cover to Kent with 'O.S./1d.' on DNG 3pf SG O1 tied by oval Rabaul d/s in violet, superb strike of the 'PASSED-BY-CENSOR' h/s in violet, 'BROMLEY KENT/3JY/15' arrival b/s, light ironed-out vertical fold in no way detracts from what is an unusually fine GRI cover. Ex "Ello": sold for \$1035. Jurgen Kilian Certificate (1982).

750<sup>T</sup>

## Lot 2601

**2601** C B - 1915 (May 19) cover to Surrey with 'O.S./1d.' on DNG 3pf SG O1 tied by oval Rabaul d/s in violet, partial '3rd Batt N and M Forces/Trop Unit' cachet & light 'PASSED-BY-CENSOR' h/s both in violet, Sydney transit b/s of 2JE-1915 & 'WORCESTER PARK/14JY/15' arrival b/s, light vertical fold & minor wrinkling.

750<sup>T</sup>

## Lot 2602

**2602** C (A-) - 1915 (May 19) cover to Surrey with 'O.S./1d.' on DNG 3pf SG O1 tied by fine oval Rabaul d/s in violet, complete '3rd Batt N and M Forces/Trop Unit' cachet & 'PASSED-BY-CENSOR' h/s both in violet, very fine strikes, 'WORCESTER PARK/3JY/15' arrival b/s, light ironed-out vertical fold & minor repaired tear at the top.

1,000<sup>T</sup>

**NEW GUINEA - 'G.R.I.' SURCHARGES - Postal History (continued)**

Lot Type Grading Description

Est \$A

**Lot 2603**

- 2603** C B - 1915 (June 8) linen-lined cover to London with scarce **combination franking** of NWPI 1d plus 'G.R.I./3d. - Rabaul/ (Deutsch-Neuguinea)' registration label SG 33d tied by oval Rabaul d/s in violet, London 'REGISTERED/ 2 / 4AU15/WDO' arrival b/s, central horizontal fold.

800<sup>T</sup>**Lot 2604**

- 2604** C B **MAIL TO AMERICA:** 1915 (Mar 18) cover to Pennsylvania endorsed "OHMS" & sealed with a largely very fine 'KAISERL DEUTSCHE POSTAGENTUR/STEPHANSORT' wax seal across the flap, 'O.S./1d' on DNG 3pf SG O1 & 'G.R.I./3d. - Rabaul/(Deutsch Neuguinea)' registration label SG 33 tied by oval Rabaul d/s unusually in blue & American 'REGISTERED' h/s in purple, Sydney & Chicago transit & Philadelphia arrival b/s, horizontal fold at the base. [The 1d rate applied only for Forces mail to Empire destinations. The correct rate was 2½d & the cover should have been taxed]

750<sup>T</sup>

## NEW GUINEA - 'G.R.I.' SURCHARGES - Postal History (continued)

Lot Type Grading Description

Est \$A



## Lot 2605

2605 C

B

- 1915 (May 10) cover to New York State with **combination franking** of NWPI ½d & 2d **plus** 'G.R.I./3d. - Rabaul/(Deutsch Neuguinea)' registration label SG 33 tied by oval Rabaul d/s in violet & American 'REGISTERED' h/s in purple, 'CENSORED' h/s in violet of Rabaul & scarce 'PASSED BY CENSOR/25DE15/=CS=' cds of Sydney in rosine (**NB**: Christmas Day), red/white 'OPENED BY/CENSOR' labels tied to the reverse by the rare 'PASSED/ ("31.12.15")/DCC AUST' cachet of the *Deputy Chief Censor*, Chicago transit b/s, light horizontal fold at the base & a little aged.

1,000<sup>T</sup>