

Lot Type Grading Description

Est \$A

LETTER CARDS - 1913 Kangaroo 1d

Our vendor recognised the three die states of the stamp but focused on the views with little reference to the dies. Personal inspection is recommended if the dies are important to you.



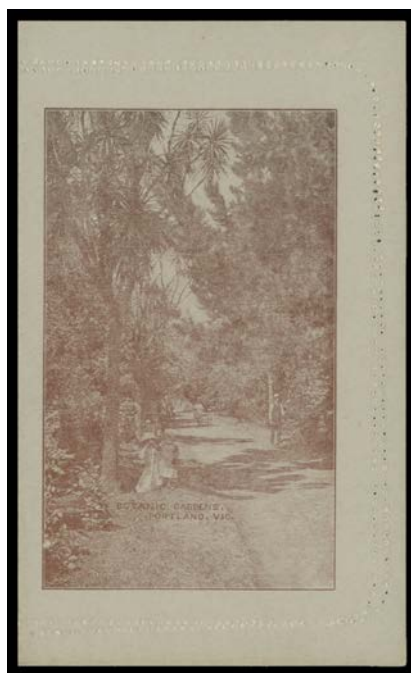
Ex Lot 2064

2064 PS A-/A **Exhibit pages** with an all-different array of oval, part-oval & rectangular views with screening variations identified, a couple are sealed & a couple are used with full margins or CTO, also 'CATARACT GORGE' with *Plate Scratch on the Stamp*, good range of colours & fine to very fine unused, Cat \$5800 approximately. **(40)** 2,000



Ex Lot 2065

2065 PS A-/A **Complete set of the Twelve Rectangular Views** comprising 'BOTANIC GARDENS/PORTLAND VIC' (*Double Perforations*), 'CAIRNS RAILWAY' (sealed), 'CATARACT GORGE', 'CENTRAL RLY STN/BRISBANE', 'GOVERNMENT HOUSE/PERTH', 'LORNE', 'MT LOFTY RANGES', 'NATIONAL PARK/NS WALES' (vertical; with boat), 'QUEEN'S GARDENS', 'ST GEORGE'S TERRACE' (used but with full margins), 'THE TWO BROTHERS' (*Cracked Plate*) & 'ZOOLOGICAL GARDENS'; various dull colours, a few minor blemishes but fine to very fine unused, Cat \$2400. A most unusual opportunity. **(12)** 1,000



Lot 2066

2066 PS A 'BOTANIC GARDENS/PORTLAND VIC' (vertical rectangle) in brown with *Double Perforations*, unused, Cat \$300. 150

LETTER CARDS - 1913 Kangaroo 1d (continued)

Lot Type Grading Description

Est \$A



Lot 2067

2067 PS A 'CAIRNS RAILWAY/QUEENSLAND' (bridge & waterfall) in blue with illustrated advertising within for *Standard Shoe & Leather Co (Adelaide)*, used to Quorn in 1913. **Exceptional advertising mail.**

250



Lot 2068

2068 PS B 'CENTRAL RLY STN/BRISBANE' (vertical part-oval) - corrected inscription - in sepia-brown with *No Stop after 'CARD' on the Address Side and Grossly Misplaced Perforations plus Aberrant Perfs at Left* with related creasing, unused, Cat \$500. [Illustrated in the ACSC, where mistakenly identified as view #143C]

300



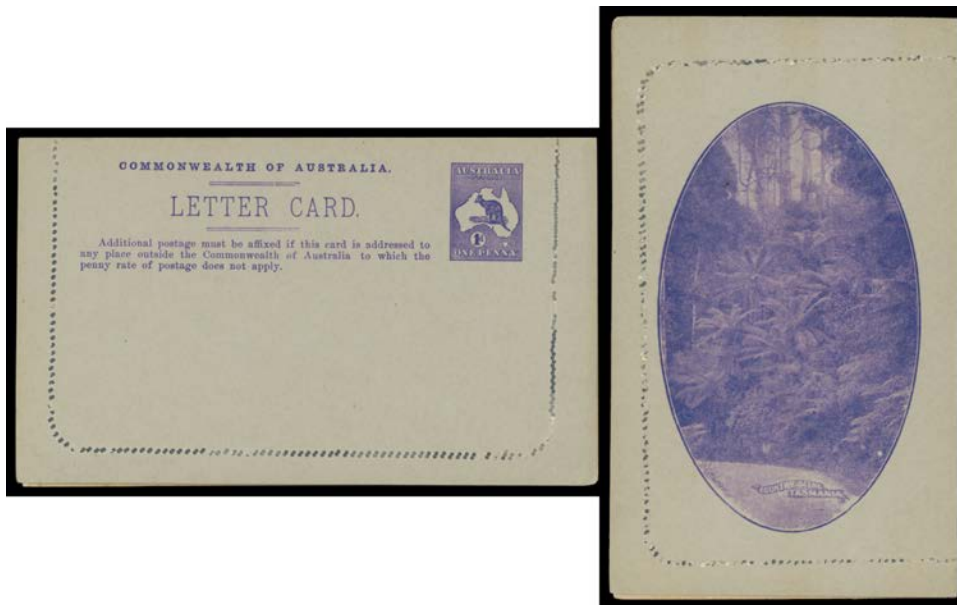
Lot 2069

2069 PS A 'CENTRAL RLY STN/BRISBANE' (vertical rectangle) - corrected inscription - in sepia-brown with *Grossly Misplaced Perforations*, unused, Cat \$500. [The original inscription placed the building in Sydney!]

400

LETTER CARDS - 1913 Kangaroo 1d (continued)

Lot Type Grading Description Est \$A



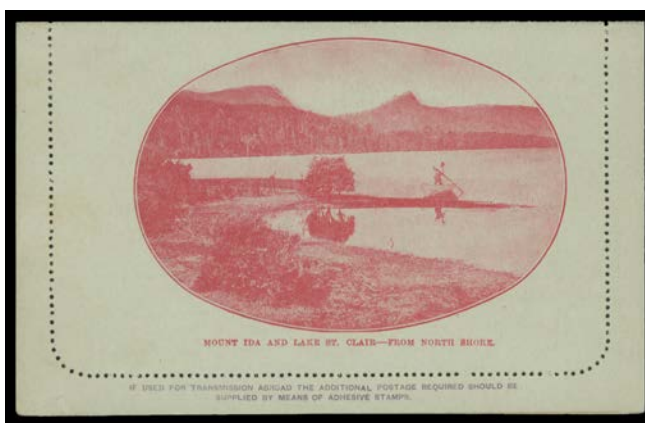
Lot 2070

2070 PS A- 'COUNTRY SCENE/TASMANIA' in bright violet with *Double Perforations*, sensible perf reinforcement, unused, Cat \$500+-. [This is a rare view in the Kangaroo Series] 500



Lot 2071

2071 PS A- 'LAKE ST CLAIR/TASMANIA' with Text 'FROM N SHORE 216' at the Base in greenish black, used at 'EUDUNDA/SA', full margins but sealed, Cat \$1000 unused; unpriced used. Rare: withdrawn because of the caption on the plate. 400



Ex Lot 2072

2072 PS A+/A - Tasmanian 2d Letter Card 'MOUNT IDA AND LAKE ST CLAIR - FROM NORTH SHORE' HG #A5a(4) in crimson, superb unused; also 1907 PPC with the same view. The same photograph as used for the 'LAKE ST CLAIR' Letter Card. (2 items) 500

LETTER CARDS - 1913 Kangaroo 1d (continued)

Lot Type Grading Description Est \$A



Lot 2073

2073	PS	A	'QUEEN'S GARDENS/PERTH WA' in purple-black, to Costa Rica with Kangaroo 1/2d & 1d added & tied by 'GEORGE STREET/NSW' cds, superb 'SAN JOSE/MAY/9/1914/COSTA RICA' arrival cds in violet. Terrific destination.	250
2074	PS	A/A-	'THE TWO BROTHERS/QUEENSLAND' deterioration of the plate comprising Framed Oval x2 different depth of field, Unframed Oval, Part Oval <i>Recut with the Sky & Part of the Border Removed</i> , Rectangle x2, Rectangle <i>Recut with the Sky Removed</i> x2 (one with <i>Plate Crack</i> at lower-right), unused, Cat \$1200. A technically interesting group. (8)	600



Lot 2075

2075	PS	A	'ZOOLOGICAL GARDENS/PERTH WA' in purple-brown with <i>Grossly Misplaced Perforations</i> , unused, Cat \$500.	300
------	----	---	---	-----



Lot 2076

2076	PS	A	'ZOOLOGICAL GARDENS/PERTH WA' in purple-brown with <i>Grossly Misplaced Perforations</i> corrected with a second strike of the perforating head, unused, Cat \$500+. [Illustrated in the ACSC]	300
------	----	---	--	-----