

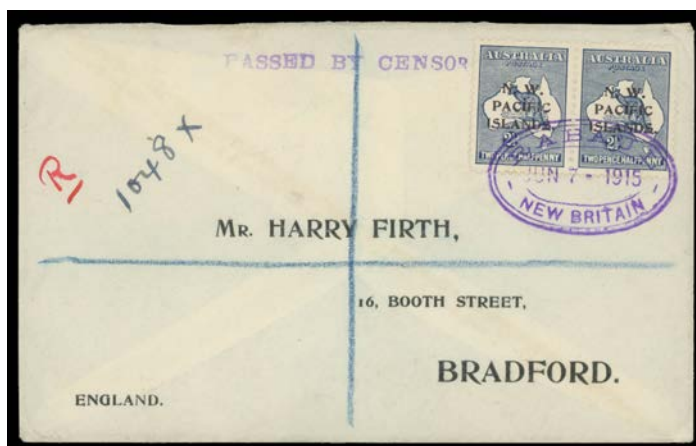
Lot Type Grading Description

Est \$A

NEW GUINEA - 'N.W./PACIFIC/ISLANDS' Overprints - Censored Mail

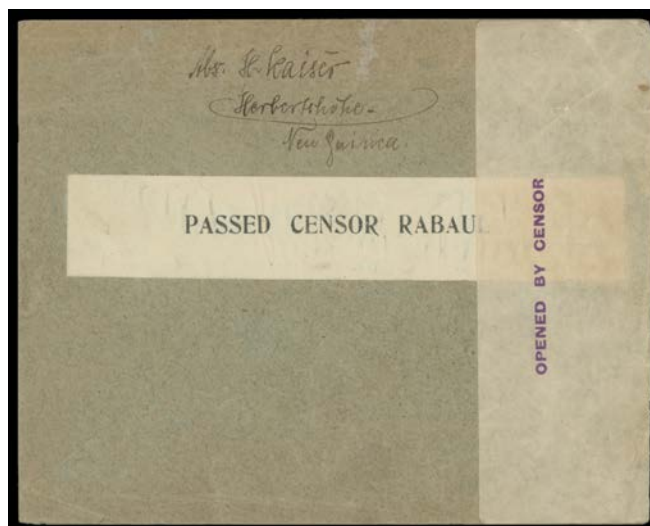
Lot 2741

2741 CL B **RABAU:** Manuscript "Passed by/Censor/[initials]" in red at left on 1915 (Mar 22) cover with rare **combination franking** of NWPI 2½d pair *type b*, GRI '1d.' on Marshalls 5pf pair **plus** 'G.R.I./3d. - Rabaul/(Deutsch Neuguinea)' registration label SG 33 tied by oval Rabaul d/s in violet, three largely complete impressions in red wax of the German 'KAISERL DEUTSCH POSTAGENTUR/STEPHANSORT' seal on the reverse, minor blemishes.

1,500^T

Ex Lot 2742

2742 C A/(B) - Straight-line 'PASSED BY CENSOR' (no hyphens) h/s in violet on 1915 (June 7) cover to GB with 2½d pair *type c* tied by superb oval Rabaul d/s in violet, mss "R/1048X" *in lieu* of a registration label, London transit b/s of 4AU15 in red; and similar but larger 'PASSED-BY-CENSOR' (with hyphens) h/s in violet tying plain censor label to 1915 (July) cover to NSW with 1d *type c* tied by oval Rabaul d/s in violet, Sydney arrival b/s of JY31-1915, repaired tear at left. (2)

500^T

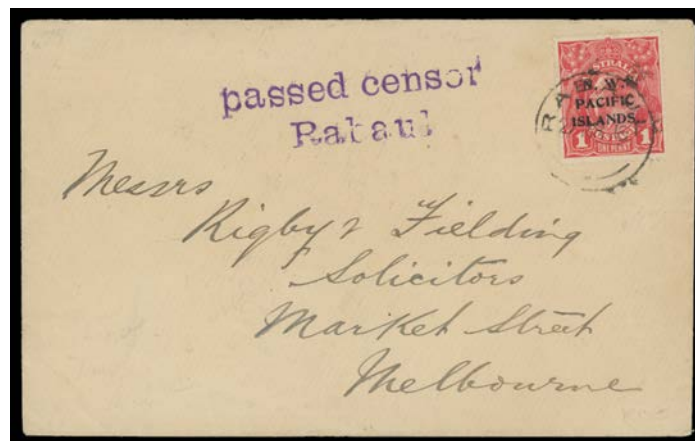
Lot 2743

NEW GUINEA - 'N.W./PACIFIC/ISLANDS' Overprints - Censored Mail (continued)

Lot	Type	Grading	Description	Est \$A
2743	C	B	- rare 'PASSED CENSOR RABAU' label (seriffed lettering) most unusually across the flap of 1915 cover unusually endorsed "Contains postcards/for Enemy Country", to Wisconsin with 2½d type b tied by 'HERBERTSHOHE' cds, Sydney violet/white censor label (damaged to reveal the stamp & endorsement) & 'PASSED BY CENSOR/27DE15/=C.S=' cds in red.	750 ^T

**Lot 2744**

2744	C	B	- German 'KAISERLICHES OBERGERICHT/RABAU' cachet unusually employed as a censor device overwritten in red "Censored/Rabaul/20 12 15", on 1915 cover to Sweden unusually endorsed "To the Chief Censor, GPO, Sydney" with ½d type b & 1d type a pair tied by superb 'KAWIENG' cds, Stockholm arrival b/s.	750 ^T
------	---	---	--	------------------

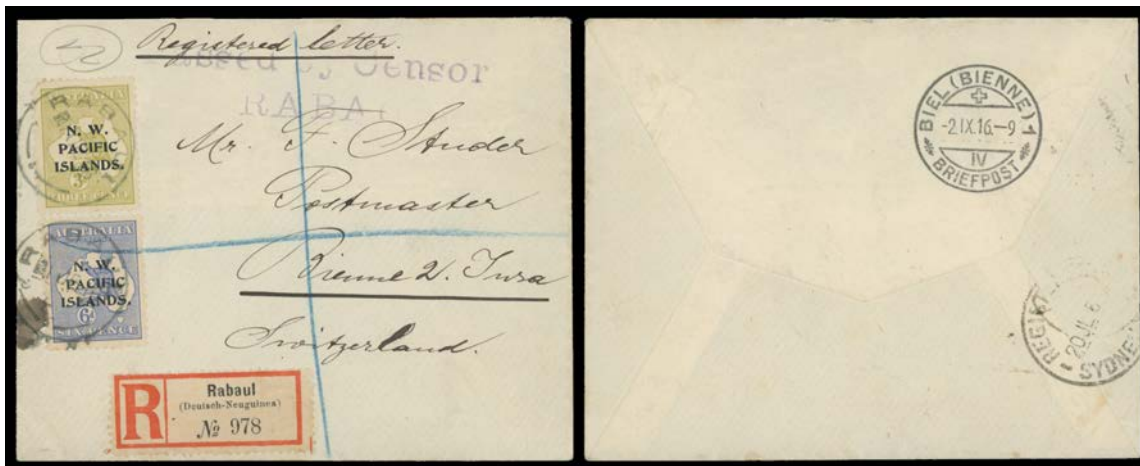
**Lot 2745**

2745	C	A	- Scarce 'passed censor/Rabaul' h/s in violet on 1916 (Mar 27) cover endorsed on back "Private Chas Matthews/892 ECo/Rabaul", to solicitors in Melbourne with 1d type a tied by Rabaul cds.	400 ^T
------	---	---	---	------------------

NEW GUINEA - 'N.W./PACIFIC/ISLANDS' Overprints - Censored Mail (continued)

Lot Type Grading Description

Est \$A



Lot 2746

2746 C A - Scarce 'Passed by Censor/RABAU' h/s in violet on 1916 (June 1) cover to Switzerland with 3d *type b* & 6d *type c* tied by Rabaul cds, German registration label, Sydney transit & superb 'BIEL (BIENNE) 1/2.IX.16/ IV /BRIEFPOST' arrival b/s.

750^T



Lot 2747

2747 C B - Scarce 'Passed Censor/RABAU' h/s light strike in violet on cover with 'THE TREASURY/RABAU' cachet at L/L, to Cheshire with rare franking of 1/2d pair & 1/- all *type a* tied by 'RABAU/7OC16' cds, damaged German-type 'R' label, Sydney & London transit & 'WARRINGTON/27NO/16' arrival b/s, light vertical fold.

850^T



Lot 2748

2748 C A - Scarce black/white 'Passed Censor Rabaul' (no underlining) & very fine '[crown]/PASSED CENSOR/1FEB1917/RABAU' d/s in violet on OHMS cover to Victoria with 1d *type a* tied by Rabaul cds, Sydney transit b/s of FE10-1917.

500^T

NEW GUINEA - 'N.W./PACIFIC/ISLANDS' Overprints - Censored Mail (continued)

Lot Type Grading Description

Est \$A

**Lot 2749**

- 2749** C A- - Rare black/white 'Passed by Censor' (with underlining) label & '[crown]/PASSED CENSOR/8FEB1918/RABAU' d/s in violet signed by the censor on 1918 (Feb 9) double-rate cover to Kaewieng with KGV 1d & 4d both type c tied by Rabaul cds, German-type registration label.

750^T**Lot 2750**

- 2750** C C - Black/white 'OPENED BY CENSOR' label & vertical-oval 'PASSED BY CENSOR/No 2/AN & MEF' h/s in violet on 1920 (June 14) cover to Germany with 1/2d type c & 2 1/2d type a tied by Rabaul cds, rather grubby. [Paying the 1/2d war tax which was not repealed until 30.9.1920]

300^T**Lot 2751**

- 2751** C B **KAVIENG:** Black/white 'OPENED BY CENSOR' label & largely superb strike of the vertical-oval 'PASSED BY CENSOR/No 1/AN & MEF' h/s in violet on 1920 cover endorsed "Kavieng/South Sea" on the flap, to Germany with Fifth Setting 2 1/2d tied by poor 'KAVIENG' cds, light ironed-out folds.

400^T

NEW GUINEA - 'N.W./PACIFIC/ISLANDS' Overprints - Censored Mail (continued)

Lot Type Grading Description

Est \$A



Lot 2752

- 2752 C C MADANG: rare oval 'CENSORED BY/DISTRICT OFFICER/WMB OGILVY' cachet fine strike on Gratuitous Distribution Letter Card with Poem on Reverse, to South Australia with 1d type a tied by 'MADANG24AU16' cds, Rabaul transit b/s of 1SE15, a bit grubby. A very rare usage of the Letter Card in New Guinea. [The letter to Ogilvie's young son states "...always look well after mother. Give her a kiss from daddy"]

500^T

Lot 2753

- 2753 C B - Black/white 'OPENED BY CENSOR' label & largely very fine strike of the rare vertical-oval 'PASSED BY CENSOR/No 5/AN & MEF' h/s in violet on 1920 cover endorsed "Madang/New Guinea/Pacific" on the flap, to Germany with Fifth Setting 1d & 2 1/2d tied by 'MADANG' cds, blemishes.

750^T

Lot 2754

- 2754 C B MANUS: Straight-line 'Passed by Censor/["initials"]' on 1916 cover to Melbourne endorsed "Registered" & "36" in red with 1/2d pair & 1d strip of 3 all type a tied by 'MANUS/5JL16' cds, superb strike of the rare boxed 'Manus' h/s with 'Kaiserliche Station' removed (Powell #83; rated F) on the reverse & Melbourne arrival b/s of 9SE16, minor spotting mostly on the face.

2,000^T

NEW GUINEA - 'N.W./PACIFIC/ISLANDS' Overprints - Censored Mail (continued)

Lot Type Grading Description

Est \$A

**Lot 2755**

2755 C B **MOROBÉ:** 3-line 'PASSED/by/CENSOR' h/s on 1918 cover to Sydney with 1d type *b* pair tied by 'MOROBÉ/31MY18' cds, minor defects.

400^T