

Lot Type Grading Description

Est \$A

**NEW GUINEA - 'N.W./PACIFIC/ISLANDS' Overprints - Mail to Foreign Destinations****Lot 2636**

**2636** C B ARGENTINA: 1916 (May 10) cover with 1d type a strip of 3 - ½d convenience overpayment - tied by Rabaul cds, violet/white 'OPENED BY CENSOR' label applied at Sydney & tied by Buenos Aires arrival b/s, minor blemishes & small repaired tear to left of the stamps. A most unusual destination.

600<sup>T</sup>**Lot 2637**

**2637** C B - 1916 (May 23) cover with 2½d type a - affected by a small tear at top - tied by 'MANUS' cds, violet/white 'OPENED BY CENSOR' label applied at Sydney, Buenos Aires arrival b/s, blemishes. [In the fortnight since the cover in the previous lot was mailed, the sender apparently received advice of the recipient's change of address]

500<sup>T</sup>

**NEW GUINEA - 'N.W./PACIFIC/ISLANDS' Overprints - Mail to Foreign Destinations (continued)**

Lot Type Grading Description

Est \$A



Lot 2638

2638	C	B	<b>AUSTRIA:</b> 1922 (July 21) <i>Neu Guinea Compagnie</i> cover to Vienna with Fifth Setting 1d red strip of 3 & 3d tied by Rabaul cds, black/white registration label, Sydney & London transit b/s, the flap removed.	500 <sup>T</sup>
2639	C	A-	<b>FRANCE:</b> 1916 missionary's cover with 2½d type a (rounded corner) tied by superb 'HERBERTSHOHE/1MR16' cds.	200 <sup>T</sup>
2640	C	B	- 1921 double-rate Catholic missionary's cover with New Colours 2d orange strip of 3 tied by 'KOKOPO' cds with 'QUEENSLAND' at base removed, Sarthe arrival b/s. [The rate was 4d for the first ½oz + 2d for each successive ½oz]	250 <sup>T</sup>



Lot 2641

2641	C	A-	- 1922 missionary's cover with New Colours 2d orange pair tied by Sydney cds with superb double-oval 'LOOSE SHIP/LETTER' cachet alongside, Sarthe arrival b/s.	500 <sup>T</sup>
------	---	----	--	------------------



Lot 2642

2642	C	B	<b>GERMANY:</b> 1919 cover with 'A KEIDEL/RABAU' cachet on reverse, scarce franking of Fifth Setting 3d <i>Die II</i> SG 109a (corner fault) tied by Rabaul cds, vertical-oval 'PASSED BY CENSOR/No 2/AN & MEF' cachet in violet. [Generally, censorship ended with the Armistice on 11.11.1918. However, mail between German nationals & Germany was routinely censored until 1921, the formal end of the Occupation Period]	400 <sup>T</sup>
------	---	---	---	------------------

## NEW GUINEA - 'N.W./PACIFIC/ISLANDS' Overprints - Mail to Foreign Destinations (continued)

Lot Type Grading Description

Est \$A



Lot 2643

- |      |   |    |  |                  |
|------|---|----|--|------------------|
| 2643 | C | A- | - 1919 double-rate cover with 'NEU GUINEA COMPAGNIE, Rabaul' imprint at top with Fifth Setting 2d grey irregular strip of 3 - convenience overpayment of ½d - tied by Rabaul cds. [The rate was 2½d x2 + ½d war tax] | 500 <sup>T</sup> |
| 2644 | C | B  | - 1919 cover with 'NEU GUINEA COMPAGNIE, Rabaul' imprint at top amended to "Kokopo" with Fifth Setting 2½d tied by superb 'KOKOPO' cds with 'QUEENSLAND' excised, minor blemishes.                                   | 400 <sup>T</sup> |



Lot 2645

- |      |   |   |  |                  |
|------|---|---|--|------------------|
| 2645 | C | B | - 1919 triple-rate cover with 'Neu Guinea Compagnie, Rabaul' imprint at top with Fifth Setting 1d red 2d grey & 3d olive pair (concealed faults) tied by Rabaul cds, scarce black/white 'Opened by Censor Rabaul' label - affected by opening-cut - & light strike of the vertical-oval 'PASSED BY CENSOR/No 2/AN & MEF' cachet. | 750 <sup>T</sup> |
|------|---|---|--|------------------|

**NEW GUINEA - 'N.W./PACIFIC/ISLANDS' Overprints - Mail to Foreign Destinations (continued)**

Lot Type Grading Description

Est \$A

**Lot 2646**

2646	C	A-	- 1919 cover with 'NEU GUINEA COMPAGNIE, Rabaul' imprint at top with Fifth Setting LMult Wmk 1/2d & 2d grey tied by 'KOKOPO' cds with 'QUEENSLAND' excised, scarce black/white 'Opened by Censor Rabaul' label - unusually folded to the face - & light strike of the vertical-oval 'PASSED BY CENSOR/No 2/AN & MEF' cachet both applied at Rabaul.	750 <sup>T</sup>
2647	C	B	- 1919 cover with 'Heinrich Rudolph Wahlen/.../MARON' imprint at top with Fifth Setting 2 1/2d tied by indistinct cds, black/white 'OPENED BY CENSOR' label & very fine strike of the vertical-oval 'PASSED BY CENSOR/No 2/AN & MEF' cachet, part of the flap removed on opening.	350 <sup>T</sup>

**Lot 2648**

2648	C	A	- 1920 cover with scarce albeit overpaid franking of Fifth Setting 5d 9d & 1/- tied by 'KOKOPO' cds with 'QUEENSLAND' excised, scarce red & black/white registration label, black/white 'OPENED BY CENSOR' label & superb strike of the vertical-oval 'PASSED BY CENSOR/No 1/AN & MEF' cachet used at Rabaul, German Currency Control label & Hamburg arrival b/s. A very attractive cover.	850 <sup>T</sup>
------	---	---	---	------------------

NEW GUINEA - 'N.W./PACIFIC/ISLANDS' Overprints - Mail to Foreign Destinations (continued)

Lot Type Grading Description

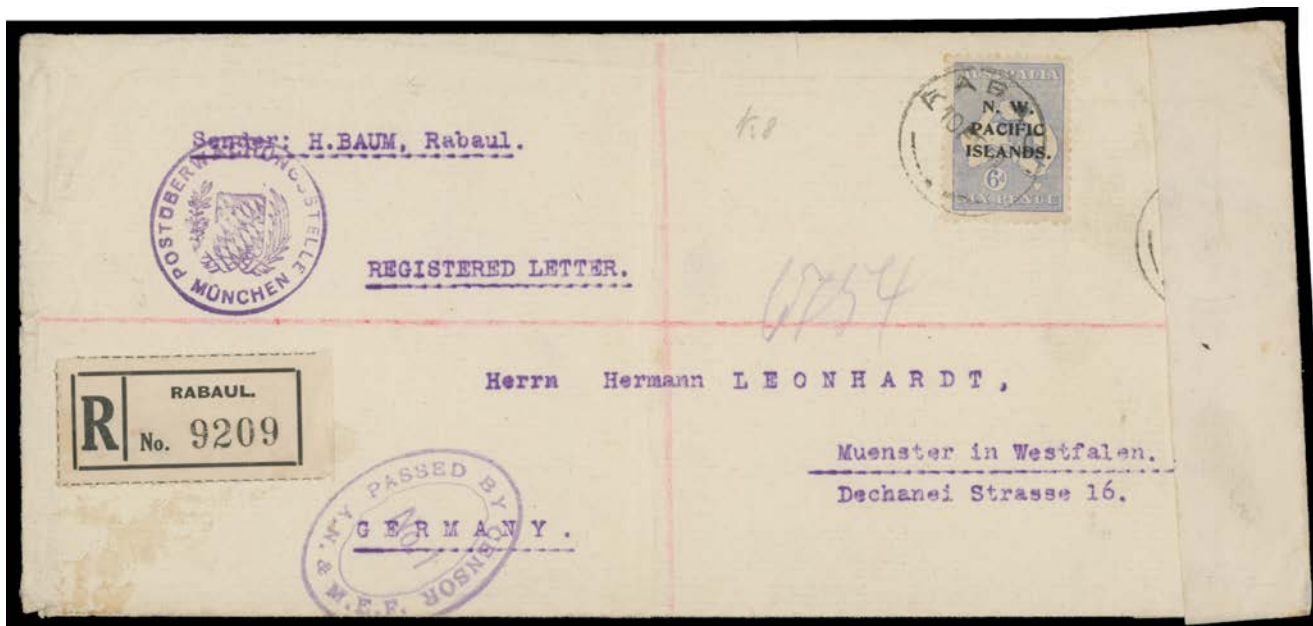
Est \$A



Lot 2649

2649 C C - 1921 cover with 'H Horstmann, Toma...' imprint at top with Fifth Setting 6d tied by Rabaul cds, black/white registration label obscured by black/white 'OPENED BY CENSOR' label, very fine vertical-oval 'PASSED BY CENSOR/No 1/AN & MEF' cachet, German Currency Control h/s in violet but unusually with no related label, Altona arrival b/s, a bit soiled & central vertical fold.

500<sup>T</sup>



Lot 2650

2650 CL B - 1921 cover with Fifth Setting 6d tied by Rabaul cds, black/white registration label, black/white 'OPENED BY CENSOR' label & very fine vertical-oval 'PASSED BY CENSOR/No 1/AN & MEF' cachet, very fine German Currency Control h/s in violet but unusually with no related label, Munster arrival b/s, central vertical fold.

500<sup>T</sup>

2651 C B - 1921 (May) cover with Fifth Setting 6d tied by Rabaul cds, scarce black/white 'RABAU/No B' registration label, 'NURTINGEN' arrival b/s, repaired tear at the top.

350<sup>T</sup>

2652 C B - 1921 (May) cover endorsed "NEWS PAPER ONLY" & on the flap "E Class, Rabaul/.../NWP Islands" with Fifth Setting 1d strip of 3 tied by Rabaul cds & Hamburg arrival machine cancel, vertical fold. [Most unusual reference to the non-existent North-West Pacific Islands!]

250<sup>T</sup>

**NEW GUINEA - 'N.W./PACIFIC/ISLANDS' Overprints - Mail to Foreign Destinations (continued)**

Lot Type Grading Description

Est \$A

**Lot 2653**

2653	C	B	- 1921 (Aug) usage of Japanese PPC with Fifth Setting 6d tied by faint Rabaul cds & scarce black/white 'RABAUL/No B' registration label, 'WURZBURG' arrival cds & 'Nachgesandt' h/s (= "Forwarded") in violet, 'SPEYER' arrival cds. A rare if overpaid usage. [The postcard rate was 2d + 3d registration]	600 <sup>T</sup>
2654	C	B	- 1921 (Sep) cover with Fifth Setting 6d tied by light Rabaul cds & scarce black/white 'RABAUL/No B' registration label, poor Hamburg arrival b/s, minor repaired tear at the top.	400 <sup>T</sup>
2655	C	B	- 1921 (Sep) double-rate cover with Fifth Setting 3d x2 tied by light Rabaul cds, overall light soiling. [In Australia, on 1.10.1920, the foreign rate was raised to 4d for the first oz + 2d for each additional oz. New Guinea usually conformed to Australian rates but the evidence from the covers here suggests the 4d rate was not imposed in New Guinea until late-1921]	300 <sup>T</sup>

**Lot 2656**

2656	C	C	- 1922 (Jan 26) cover with rare franking of Fifth Setting 3d olive <b>Dies II-I Pair</b> SG 76ab (Cat £1200 x5+ on cover; the <i>Die II</i> unit creased & with toned perfs) tied by 'RABAUL/26JA22/NEW BRITAIN' cds with <i>Reversed 'N' in 'BRITAIN'</i> and scarce black/white 'RABAUL/No B' registration label, 'BREMEN/22.3.22' arrival b/s, rather soiled.	600 <sup>T</sup>
2657	C	B	- 1922 cover with 'Hernshein & Co AG/Hauptfiliale Rabaul' imprint on the flap, Fifth Setting 1/2 LMult Wmk 1d & New Colours 2d orange (affected by fold) tied by Rabaul cds underpaying 4d rate, scarce usage of the German Colonial-pattern 'T'-in-octagon h/s but postage due apparently not collected.	350 <sup>T</sup>

## NEW GUINEA - 'N.W./PACIFIC/ISLANDS' Overprints - Mail to Foreign Destinations (continued)

Lot Type Grading Description

Est \$A



Lot 2658

- 2658 C (B) - 1922 cover with Fifth Setting 2½d blue SG 107b x2 & New Colours 2d orange tied by Rabaul cds, black/white 'R' label, boxed 'Freigegeben/P Ue Munchen' (= Released/Postal Control Munich) h/s, 'STETTIN' arrival b/s, reinforced central fold.

500<sup>T</sup>

Lot 2659

- 2659 C B - 1923 cover with Fifth Setting 6d grey-blue SG 110a & New Colours 1d violet tied by 'RABAU/NEW BRITAIN' cds (with the 'N' of 'BRITAIN' reversed), registration cachet in violet, 'LEIPZIG' arrival b/s & redirected with instructions on the flap, a couple of small repaired tears. [Registered covers from the expensive 4d letter rate period up to 30.9.1923 are very scarce]
- 2660 C A- - 1924 (Dec 15) cover with New Colours 2d scarlet x2 tied by very fine 'RABAU/NEW GUINEA' cds.
- 2661 C C **NETHERLANDS:** 1916 (Apr 13) cover with 3d type a - ½d convenience overpayment but almost certainly overweight - tied by Rabaul cds, boxed 'PASSED BY/CENSOR SD' cachet applied at Sydney, 'AMERSFOORT' arrival b/s, overall light soiling. [Most mail to Holland is endorsed "Letter for enemy country enclosed"]

600<sup>T</sup>200<sup>T</sup>200<sup>T</sup>

## NEW GUINEA - 'N.W./PACIFIC/ISLANDS' Overprints - Mail to Foreign Destinations (continued)

Lot Type Grading Description

Est \$A



Lot 2662

2662 C A - 1919 (Apr 28) cover with 3d type c + Fifth Setting 1d red & 2d grey tied by Rabaul cds, black/white 'R' label, 'sGRAVENHAGE' arrival cds & forwarded to "Renkum" (poor arrival b/s).

500<sup>T</sup>

Lot 2663

2663 PS A - 1920 (Jan 8) Catholic mission usage of Australian 1 1/2d Letter Card ('GIBBERABONG CREEK') with 'SISTERS OF O L S HEART/VUNA POPE/NEW BRITAIN, PAC ISL' cachet in blue on the reverse, Fifth Setting 1/2d only added & tied by light 'KOKOPO' cds with 'QUEENSLAND' excised, lengthy letter in Dutch. An extraordinary and entirely social unauthorised usage of Australian postal stationery. [The sender purported to pay the postcard rate of 1 1/2d plus 1/2d war tax, instead of the letter rate of 2 1/2d + 1/2d war tax. Only 1/2d was legitimately paid but remarkably no postage due was assessed]

750<sup>T</sup>

2664 CL (B) - **INDIES:** 1919 (Oct 16) OHMS cover with *Treasury* cachet at L/L with Fifth Setting 2d & 3d tied by Rabaul cds, black/white 'R' label, 'SOERABAJA' arrival backstamp, redirected to "Salemba/Weltevreden" with 'WELTEVREDEN' arrival b/s, creases affect the stamps, repaired opening tears on the reverse.

400<sup>T</sup>

2665 C A- **NORWAY:** 1923 Victorian PPC with New Colours 2d scarlet tied by light Rabaul cds, message in Norwegian or Esperanto (?). A very unusual destination.

250<sup>T</sup>

2666 C A- **SWEDEN:** 1916 (Mar 4) cover to *Deutsche Hilfsverein* "Per SS Morinda" with 1/2d & 1d pair all type a tied by Rabaul cds, violet/white censor label affixed at Sydney & tied by Stockholm arrival b/s.

250<sup>T</sup>



NEW GUINEA - 'N.W./PACIFIC/ISLANDS' Overprints - Mail to Foreign Destinations (continued)

Lot Type Grading Description

Est \$A



Lot 2667

2667 CL B - 1919 linen-lined sextuple-rate cover to *Deutscher Hilfsverein* with scarce franking of Fifth Setting 6d & 1/- tied by unclear Rabaul cds, small 'RABAUL' h/s on German 'Deulon/(Deutsch Neuguinea)' registration label, poor Stockholm arrival b/s, central vertical fold. [The rate was 2½d per ½oz x6 = 15d + 3d registration (+ ½d war tax unpaid)]

750<sup>T</sup>



Ex Lot 2668

2668 C A/A- SWITZERLAND: 1915 two different Vunapope Mission PPCs both with ½d & 1d tied to the view side by Rabaul cds, 'PASSED BY CENSOR' h/s & 'AFFOLTERN/AM ALBIS' arrival cds. Very scarce cards. (2)

300<sup>T</sup>



Lot 2669

2669 C A - 1916 (May) administrator's cover with embossed Coat of Arms on the flap & endorsed "Nauru/29 4 16" with 2½d type a tied by very fine 'PO PLEASANT ISLAND/MY10/16/(NAURU)' cds, 'MOUDON' arrival b/s.

800<sup>T</sup>

## NEW GUINEA - 'N.W./PACIFIC/ISLANDS' Overprints - Mail to Foreign Destinations (continued)

Lot Type Grading Description

Est \$A



Lot 2670

- |      |   |   |   |                  |
|------|---|---|---|------------------|
| 2670 | C | B | - 1917 cover to <i>Bureau International de la Paix</i> with ½d type a plus 1d types b & c tied by Rabaul cds, scarce black/white 'Passed Censor Rabaul' label & superb '[crown]/PASSED CENSOR/31JAN1917/RABAU' d/s in violet, Sydney transit cds unusually on the face over manuscript "Received in damaged/condition GPO" which apparently required the censor label to be aggressively reaffixed, Bern arrival b/s, central vertical fold & minor faults. | 450 <sup>T</sup> |
|------|---|---|---|------------------|



Lot 2671

- |      |   |    |  |                  |
|------|---|----|--|------------------|
| 2671 | C | B  | - 1918 (Oct) OHMS cover with <i>Treasury</i> cachet at L/L, 2d type b & 4d orange type c tied by Rabaul cds, German 'Rabaul/...' registration label partly obscured by black/white 'OPENED BY CENSOR' label affixed at Sydney (b/s), 'BASEL' arrival b/s, minor blemishes. | 400 <sup>T</sup> |
| 2672 | C | A- | - 1919 (Mar 15) double-rate cover with 1d type a strip of 3 & 3d type c tied by Rabaul cds. [The rate was 2½d per ½oz + ½d war tax. Occasionally, senders mistakenly paid the war tax per ½oz]   | 300 <sup>T</sup> |

## NEW GUINEA - 'N.W./PACIFIC/ISLANDS' Overprints - Mail to Foreign Destinations (continued)

Lot Type Grading Description

Est \$A



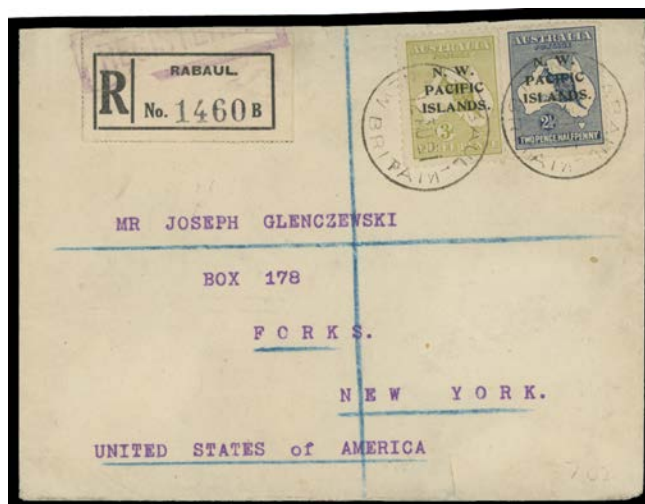
Lot 2673

**2673** C B UNITED STATES: 1915 (Sep 14) cover with 'Hamburgische Südsee-Aktiengesellschaft/Hauptfiliale Rabaul' imprint at top with 1/2d type b pair & 1d type c tied by Rabaul cds, 'PASSED BY CENSOR' h/s, violet/white 'OPENED BY CENSOR' tape affixed at Sydney & unusually with 'PASSED BY CENSOR/=CS=' cds in red alongside, corner fault at U/L.

350<sup>T</sup>

Lot 2674

**2674** C A - 1917 (Mar 23) OHMS cover with *Treasury* cachet at L/L, 6d type c - 1/2d convenience overpayment - tied by Rabaul cds, German 'R' label, '[crown]/PASSED CENSOR/23MAR17/RABAUL' unusually on the reverse, Sydney transit & New York arrival b/s.

400<sup>T</sup>

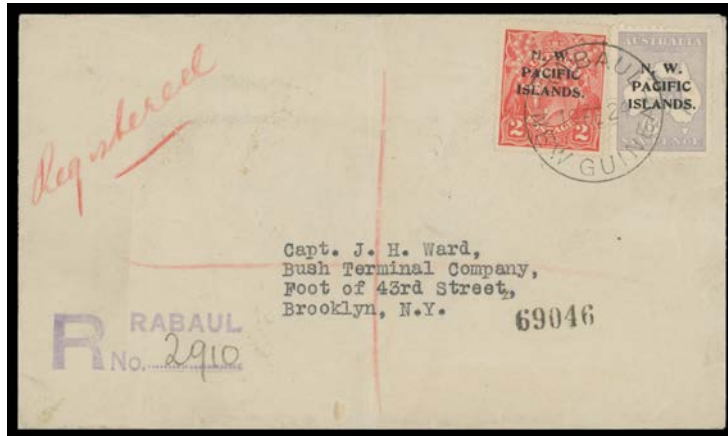
Ex Lot 2675

**2675** C B - 1921 & 1922 registered covers to New York or Texas, the first with 2 1/2d & 3d, the other with 1/2d 2 1/2d & 3d, black/white 'R' labels (the first with scarce 'B' at L/R), both with Sydney transit & US arrival b/s. [The postal rates at this time apparently were poorly understood. Previously, the letter rate was 2 1/2d, increasing to 3d because of the war tax. But from 1.10.1920 the rate was 4d for the first 1/2oz] (2)

600<sup>T</sup>

**NEW GUINEA - 'N.W./PACIFIC/ISLANDS' Overprints - Mail to Foreign Destinations (continued)**

Lot	Type	Grading	Description	Est \$A
2676	C	B	- 1923 (July 4; Independence Day!) mission cover with imprint at U/L, New Colours 2d scarlet x2 tied by Rabaul cds, slightly truncated at left.	200 <sup>T</sup>

**Lot 2677**

<b>2677</b>	C	A-	- 1924 (Feb 19) cover with Fifth Setting 6d grey-blue SG 110a (small corner fault) & New Colours 2d scarlet punctured 'OS' tied by 'RABAU/NEW GUINEA' cds, rubber registration h/s, three New York b/s, light central fold. [On 1.10.1923, the foreign letter rate was reduced to 3d for the first ½oz plus 1½d per additional ½oz; convenience overpayment of ½d]	500 <sup>T</sup>
-------------	---	----	--	------------------