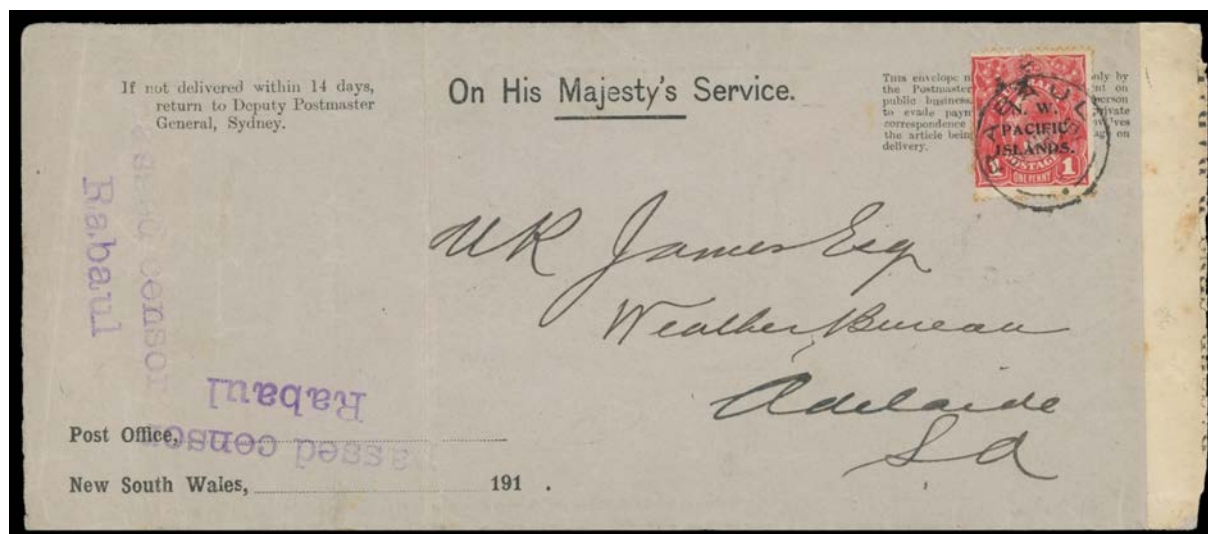


Lot Type Grading Description

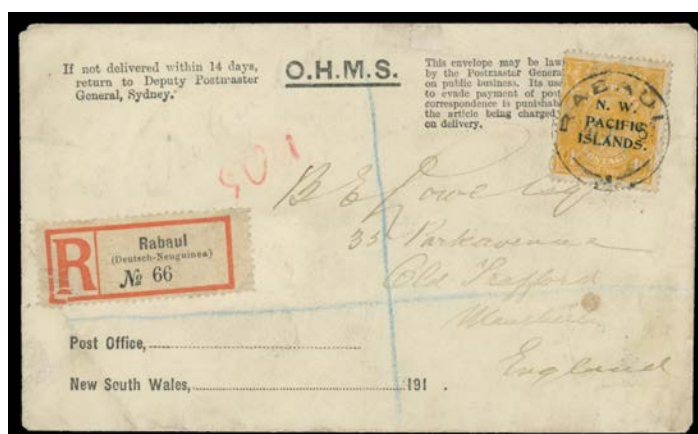
Est \$A

NEW GUINEA - 'N.W./PACIFIC/ISLANDS' Overprints - Official Mail

2692 C A- 1916 (Feb 13) OHMS cover with *Treasury* cachet, to London with 4d orange *type a* tied by 'RABAU' cds & German 'Rabaul/(Deutsch-Neuguinea)' registration label, Sydney transit & London arrival b/s.

400^T**Lot 2693**

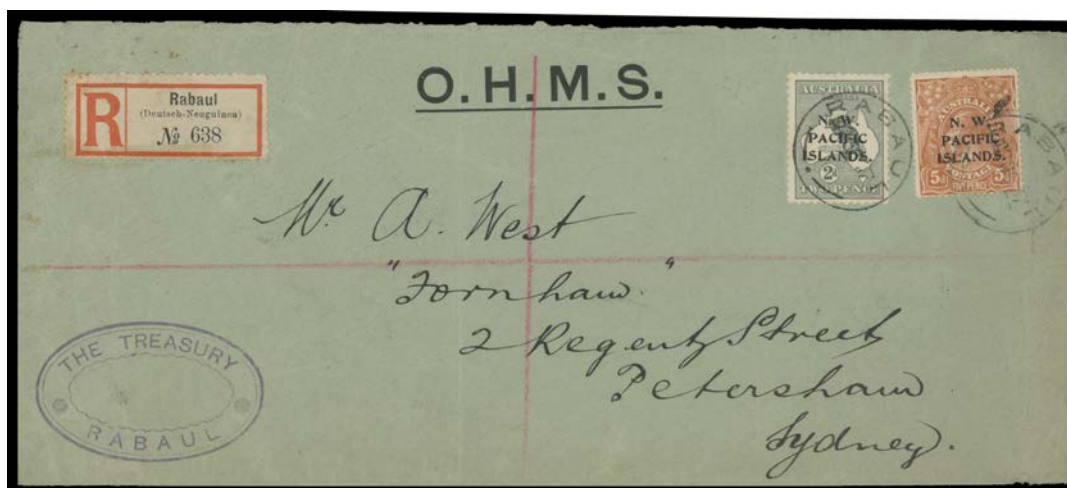
2693 CL B - (Mar 31) scarce usage of NSW 'Penalty' envelope to Adelaide with 1d *type c* tied by Rabaul cds, rare black/white 'PASSED CENSOR RABAU' label (faults) & two strikes of the rare 'passed censor/Rabaul' h/s in violet, vertical fold & a few blemishes.

500^T**Lot 2694**

2694 C B - (June 24) NSW 'Penalty' envelope with 'Post Office' imprint at L/L, to GB with 4d orange *type c* tied by 'RABAU' cds & German 'Rabaul/(Deutsch-Neuguinea)' registration label, Sydney transit b/s, minor blemishes.

600^T

2695 CL B - (Aug 22) cover with 'THE TREASURY/RABAU' cachet in violet at L/L, to Melbourne with 5d *type c* tied by Rabaul cds, German registration label, Melbourne arrival b/s, slightly truncated & opened-out.

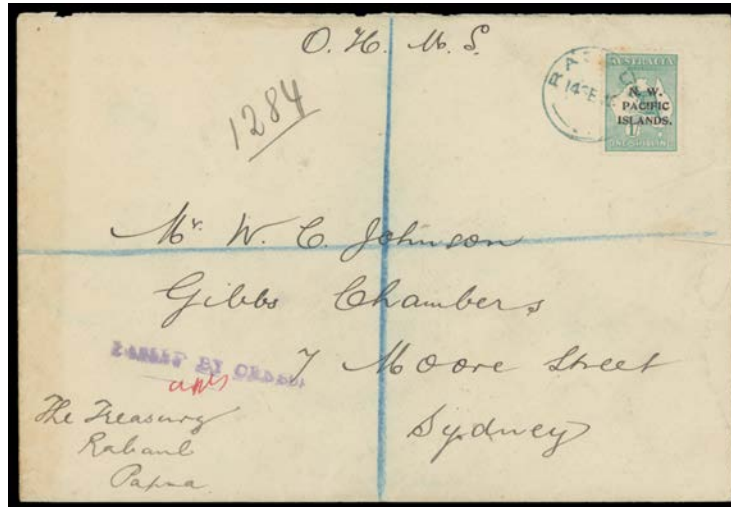
350^T**Lot 2696**

2696 CL B - (Aug 22) double-rate cover with 'THE TREASURY/RABAU' cachet in violet at L/L, to NSW with 2d & 5d both *type c* tied by Rabaul cds, German registration label, Sydney transit & superb 'PETERSHAM/NSW' arrival b/s, vertical fold & minor wrinkles.

500^T

NEW GUINEA - 'N.W./PACIFIC/ISLANDS' Overprints - Official Mail (continued)

Lot	Type	Grading	Description	Est \$A
2697	C	B	- (Aug) plain cover with 'KAISERLICHES BEZIRKSAMT/[arms]/RABAU' blue/white wafer across the flap, to Melbourne with combination franking 1d type a plus unoverprinted Kangaroo 3d punctured 'OS' tied by 'RABAU' cds unusually in blue, mss "1103X" in lieu of a registration label, vertical fold at left & a bit grubby.	400 ^T

**Lot 2698**

2698	CO	B	- cover (192x130mm) endorsed "OHMS" & at L/L "The Treasury/Rabaul/Papua" (!), to Sydney with rare solo franking of 1/- type a tied by Rabaul cds, registration number "1284" in lieu of an 'R' label & straight-line 'PASSED BY CENSOR' h/s, Sydney arrival b/s of 25SE16, minor blemishes.	600 ^T
------	----	---	---	------------------

**Lot 2699**

2699	C	A-	1918 (July 18) scarce usage of NSW PMG's Department 'Penalty' envelope, to NSW with 4d orange type a tied by Rabaul cds, German registration label (stained by the adhesive used), very fine Sydney arrival b/s.	500 ^T
2700	CL	B	- OHMS cover with Treasury cachet at L/L, to Berkshire with 3d type c & Fifth Setting 1d tied by 'RABAU/18NO18' cds, small 'RABAU' h/s on German 'Deulon/(Deutsch Neuguinea)' registration label, Sydney & Liverpool transits & 'BRACKNELL' arrival b/s, minor blemishes.	450 ^T

NEW GUINEA - 'N.W./PACIFIC/ISLANDS' Overprints - Official Mail (continued)

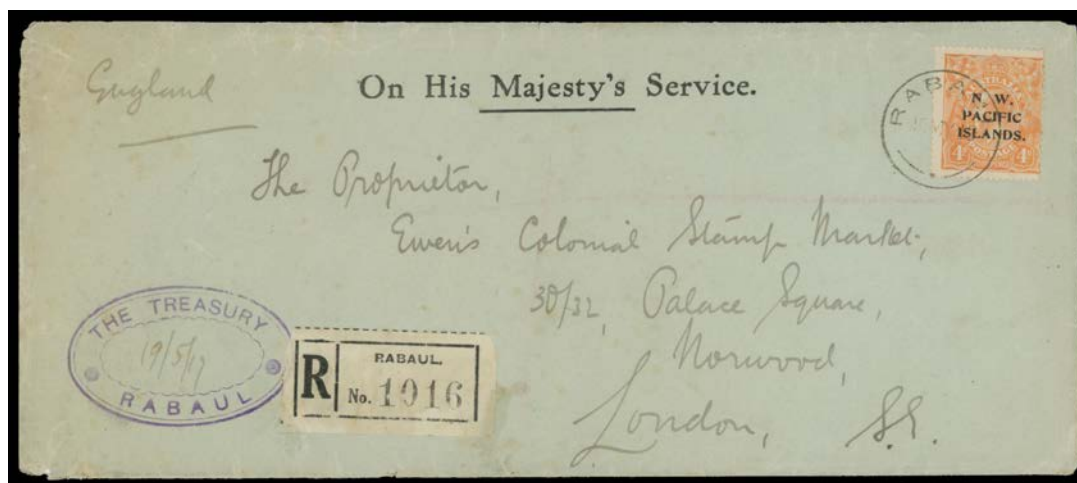
Lot Type Grading Description

Est \$A



Lot 2701

- 2701 CO B - OHMS cover (205x187mm) with *Treasury* cachet at L/L, to GB with Fifth Setting 6d blue vertical strip of 4 tied by 'RABAU' cds, German 'Rabaul/(Deutsch-Neuguinea)' registration label, Sydney transit & London arrival b/s, minor blemishes. [Addressed to prominent stamp dealers & almost certainly contained complete forms of 30, we would like to think to One Pound!]

750^T

Lot 2702

- 2702 CL B 1919 OHMS cover with *Treasury* cachet at L/L, to GB with rare franking of Fifth Setting 4d orange punctured 'OS' SG O4 tied by 'RABAU/19MY19' cds, black/white registration label, Sydney transit & London arrival b/s, minor blemishes. A very rare **First Day Cover**: 19.5.1919 is recognised by *Gibbons* as the earliest date of use for any of the 'OS' punctures.

1,000^T

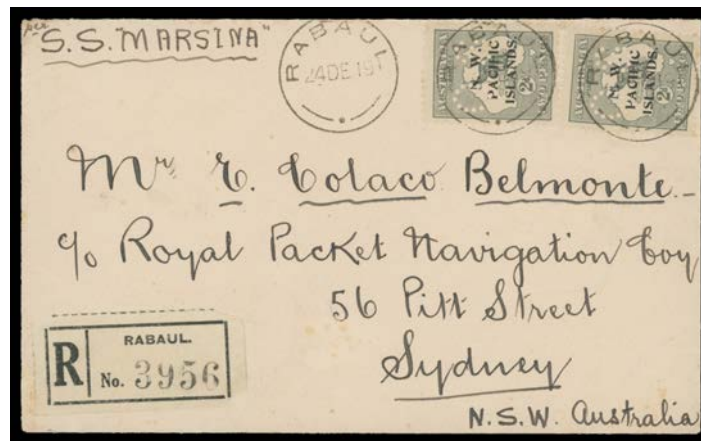
NEW GUINEA - 'N.W./PACIFIC/ISLANDS' Overprints - Official Mail (continued)

Lot Type Grading Description

Est \$A

**Lot 2703**

2703 C A - (July 24) scarce usage of NSW 'Penalty' envelope with *PMG's Department* imprint at L/L largely obscured by black/white registration label, to GB with 4d orange *type a* tied by 'RABAUL' cds, Sydney transit & poor London arrival b/s.

600^T**Lot 2704**

2704 C A- - (Dec 24; Christmas Eve) cover to NSW "per SS Marsina" with scarce franking of punctured 'OS' 2d grey SG O6 x2 tied by 'RABAUL' cds, black/white 'RABAUL/No' registration label, Sydney arrival b/s of 12JA20, a few insignificant tonespots. A very attractive NWPI cover.

1,000^T**Ex Lot 2705**

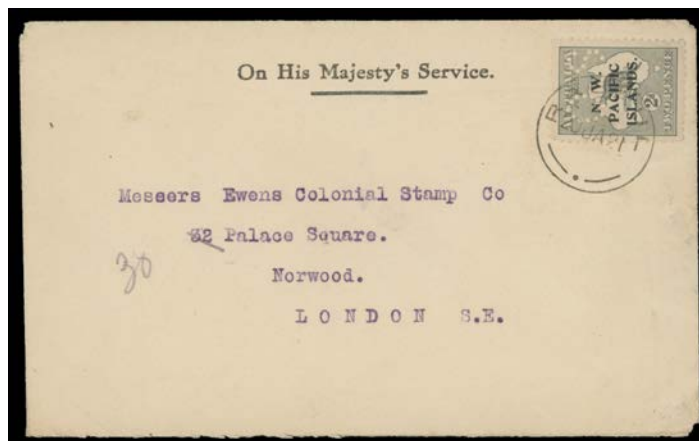
2705 C/CL B/C 1920-25 OHMS covers with punctured 'OS' frankings 1d carmine, 1d violet or 2d Kangaroo, a few faults but a very scarce trio. (3)

500^T

NEW GUINEA - 'N.W./PACIFIC/ISLANDS' Overprints - Official Mail (continued)

Lot Type Grading Description

Est \$A



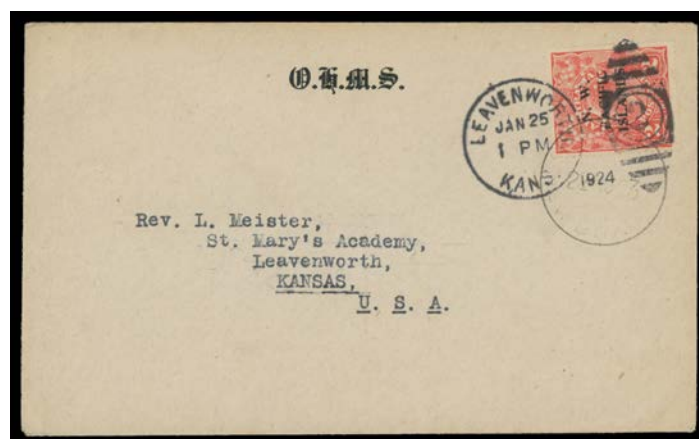
Lot 2706

2706 C A- 1921 OHMS cover to GB with Fifth Setting 2d grey punctured 'OS' SG O6 tied by 'RABAU/20JA21' cds.

600^T

Lot 2707

2707 C A- - OHMS cover to GB with Fifth Setting 2d grey punctured 'OS' SG O6 tied by 'RABAU/18FE21' cds.

600^T2708 C B - OHMS cover to GB with Fifth Setting 5d tied by 'RABAU/30MR21' cds, mss "R45" in red *in lieu* of a registration label, Sydney transit & London arrival b/s, minor blemishes.400^T

Lot 2709

2709 C A- 1923 (late) OHMS cover to Kansas with New Colours 2d scarlet punctured 'OS' SG O19 tied by light Rabaul cds & 'LEAVENWORTH/KANS' arrival. [Paid for British Empire rate only, but not taxed]

500^T

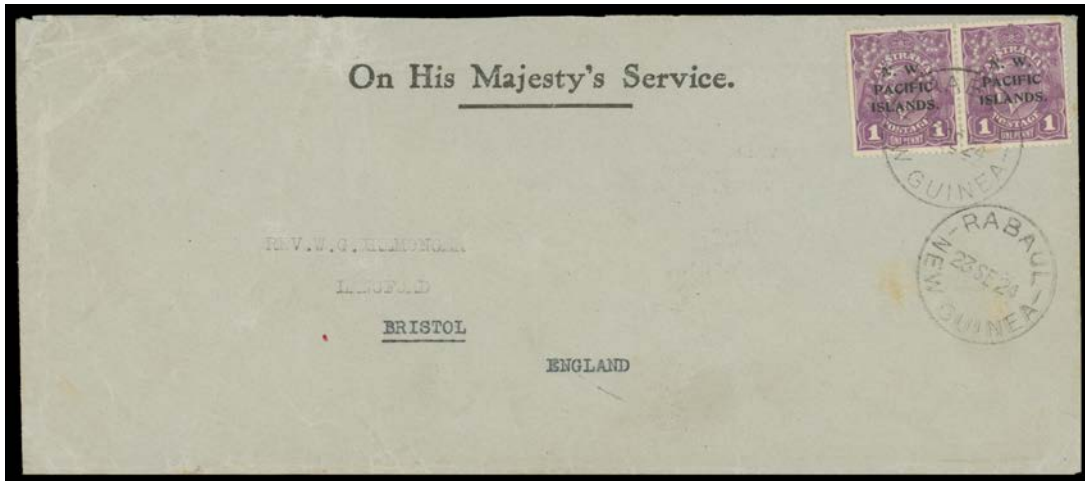
2710 CL B 1924 OHMS cover to GB with New Colours 2d scarlet punctured 'OS' SG O19 tied by very fine 'RABAU/9AP24/NEW GUINEA' cds, minor wrinkling.

400^T

NEW GUINEA - 'N.W./PACIFIC/ISLANDS' Overprints - Official Mail (continued)

Lot Type Grading Description

Est \$A



Lot 2711

2711 CL B - OHMS cover to GB with scarce franking of New Colours 1d violet punctured 'OS' SG O17 horizontal pair tied by 'RABAU/23SE24/NEW GUINEA' cds, minor blemishes.

600^T

Lot 2712

2712 C A- 1925 OHMS cover to Kansas with rare franking of Kangaroo 3d - torn before being affixed - & New Colours 4d pale ultramarine both punctured 'OS' SG O8 & O21 tied by 'RABAU/6JL25/NEW GUINEA' cds, Sydney & Seattle transit b/s, Delia arrival b/s & redirected with 'KAW STATION/KANSAS CITY, KANSAS' h/s twice in red & Kaw Station arrival b/s. A lovely cover: one of the most attractive 'OS'-franked covers we have seen.

1,500^T