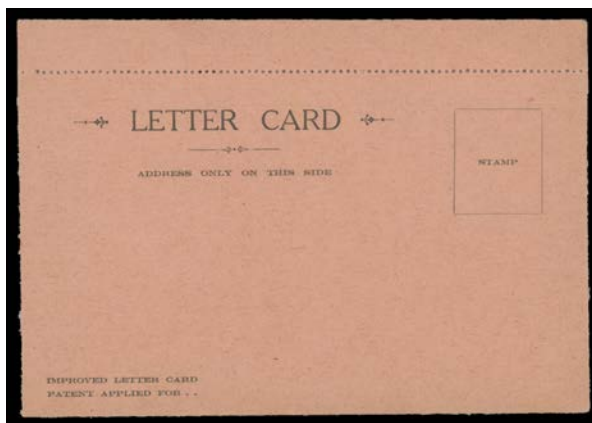


Lot Type Grading Description

Est \$A

**LETTER CARDS - 1914-18 KGV Sideface 1d**

As was the case with the Kangaroo issues, our vendor's focus in the Penny Sideface issues was the views and not the die or the perforation. This section is therefore also arranged largely alphabetical.



Lot 2077

**2077** E A **PRIVATE ESSAY FOR A REVISED FORMAT LETTER CARD:** 1915 (Jan) radical winged design printed in brown/pink submitted by *Colonel LW Bickle* from Sydney, unused. [The Post Office received many complaints about the gumming & opening of letter cards. *Cooke* was initially taken by this design which addressed both issues. However, the requirement for die-cutting & the consequent high wastage, plus the four thicknesses on folding, caused the PO to not proceed with it]

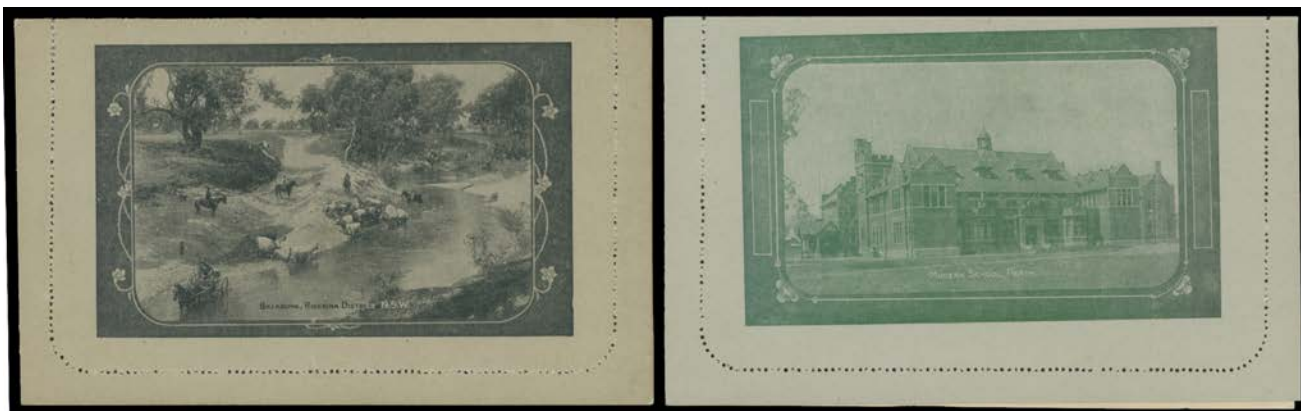
250



Ex Lot 2078

**2078** PS A/B **Exhibit pages** with the balance of these issues, some better views - with minor problems - including 'A BLUE GUM LOG...', 'AGRICULTURAL COLLEGE...', 'BISMUTH MINE...', 'BROOKFIELD' (used), 'BUFFALO GORGE...', 'COAL MINE...', 'GIN GIN...', 'MOUNT GOULD...', 'PERTH', 'PERTH' *Recut with Sky Removed* (used & sealed), 'POST OFFICE SYDNEY NSW' *Bicolour*, 'RAILWAY SLEEPERS...', 'RUNDLE ST...' Original State & Second State with Thinner Frame (used), etc, Cat \$3700. (33)

1,600



Ex Lot 2079

**2079** PS A/A- **Set of Nine Ornate Rectangular Views** comprising 'AVON RIVER...', 'BILLABONG...' (very scarce), 'BURRENJUCK DAM...' (error for Burrinjuck), 'BRIDAL VEIL FALLS...', 'EMPRESS FALLS...', 'LOADING WHEAT...', 'MODERN SCHOOL...', 'MURRAY BRIDGE...' (stained on the address side), and 'ROYAL MINT...', unused, Cat \$1950. A difficult 'set' to complete. (9)

1,000

**2080** PS A 'APPLE PICKING/TASMANIA' in blue-black Die 1 Perf 12½ ACSC #LC18, unused, Cat \$175.

80

**LETTER CARDS - 1914-18 KGV Sideface 1d (continued)**

Lot Type Grading Description Est \$A



**Lot 2081**

2081	PS	A-	'BROOKFIELD QUEENSLAND' in blue Die 2 Perf 12½ ACSC #LC22, minor blemishes on the view side, unused. Rare: <b>the first unused example of this view to be recorded.</b> [This view exists in both Die 1 - Cat \$500 used - & Die 2 - Cat \$400 used. In neither case is it priced unused]	500
------	----	----	---	-----



**Lot 2082**

2082	PS	A+	'BROOKFIELD QUEENSLAND' in purple-black Die 2 Perf 12½ ACSC #LC22, 'MANNUM' (SA) cds, Cat \$400. Superb!	300
------	----	----	--	-----

2083	PS	A	'BUFFALO GORGE VIC' (horse & cart on bridge) in deep blue Die 1 Perf 12½ ACSC #LC18, unused, Cat \$200.	100
------	----	---	---	-----



**Lot 2084**

2084	PS	A	'BURRINJUCK DAM NEW SOUTH WALES/Irrigating a young Citrus Orchard...' in dull purple Die 1 Perf 12½ ACSC #LC18 with KGV 1d red added but unused, Cat \$400. [This view, with its wordy caption, was specifically requested by the NSW Water Conservation & Irrigation Commission & was introduced only in December 1917]	250
------	----	---	--	-----

## LETTER CARDS - 1914-18 KGV Sideface 1d (continued)

Lot Type Grading Description

Est \$A

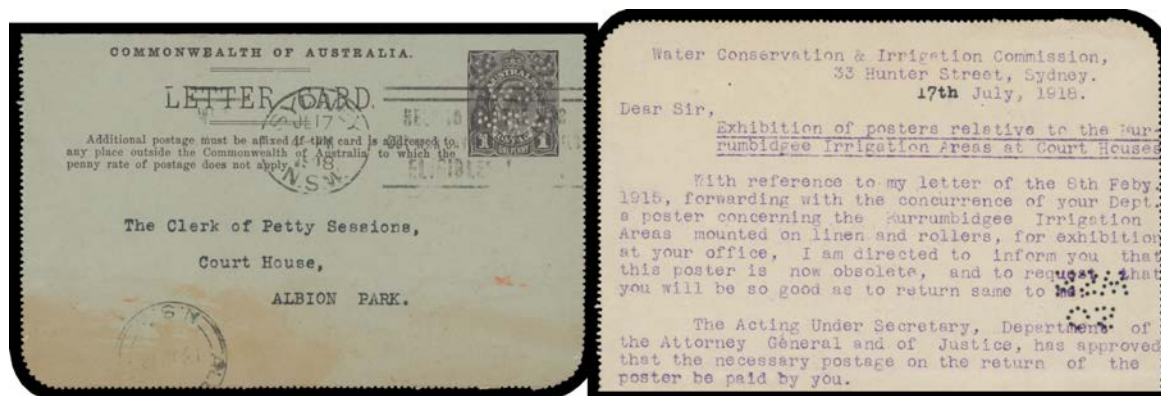


## Lot 2085

**2085** PS C 'BURRINJUCK DAM NEW SOUTH WALES/Irrigating a young Citrus Orchard...' in dull purple Die 1 Perf 12½ as ACSC #LC18 but **punctured 'OS/NSW'** and with tiny 'MURRUMBIDGEE IRRIGATION AREAS' h/s below the first line of the caption, roneo'd official letter within but the card is unused & apparently damaged on the address side when removed from an official file, Cat \$500. Rare & important item: three similar cards - **the only Letter Cards recorded with a State Official puncture** - were discovered only in 2011]

This example is apparently a **proof** for the roneo'd letter - see the next lot - which explains both it being unused, & the filing holes. Note that four lines of text have been crossed-through, & these were not included in the final version. **NB: the perfins were applied before the cards were folded**, as only the stamp impression is penetrated.

400



## Lot 2086

**2086** PS B 'BURRINJUCK DAM NEW SOUTH WALES/Irrigating a young Citrus Orchard...' in dull purple Die 1 Perf 12½ ACSC #LC18 **punctured 'OS/NSW'** and with tiny 'MURRUMBIDGEE IRRIGATION AREAS' h/s below the first line of the caption, amended roneo'd letter within, Sydney slogan cancel of JL17/1918 & partial 'ALBION PARK' arrival cds on the face, light reddish stain on the address side, Cat \$500. By far the finest of the three recorded examples.

500



## Lot 2087

**2087** PS A- 'BURRINJUCK DAM NEW SOUTH WALES/Irrigating a young Citrus Orchard...' in dull greenish blue Die 1 Perf 12½ ACSC #LC18 **overprinted 'MURRUMBIDGEE/IRRIGATION SCHEME' in Black** with 1½d added & tied by 'LEETON/29JA19/=NSW=' cds, small spikehole on the address panel, Cat \$1500. One of the rarest views, with very few examples recorded. [The *Irrigation Commission* requested that the overprint be applied to 1200 cards that they supplied. This was approved by *Treasury*, effected by *Harrison*, and the cards returned by him to the Commission for their own use, leaving no doubt that this was an official, if limited, issue]

1,000



**LETTER CARDS - 1914-18 KGV Sideface 1d (continued)**

Lot Type Grading Description

Est \$A

**Lot 2088**

2088	PS	C	'BURRINJUCK DAM NEW SOUTH WALES/Irrigating a young Citrus Orchard...' ACSC #LC18 <b>overprinted 'MURRUMBIDGEE/IRRIGATION SCHEME' in Red</b> with 1/2d added - for the wartax - & tied by 'CROWS NEST/NSW' cds, minor silverfish damage, Cat \$1500. One of the rarest views, with very few examples recorded. [Cards with the overprint in red were from general stock & were sold over post office counters]	400
2089	PS	A	'CITY COURT MELBOURNE' in greenish black Die 1 Perf 12½ ACSC #LC18, unused, Cat \$250.	150
2090	PS	A	'COAL CLIFF COLLIERY NSW' in dull purple Die 1 Perf 12½ ACSC #LC18, unused, Cat \$175.	100
2091	PS	A	'COLLINS ST/MELBOURNE' (vertical with trams & Town Hall) in greenish blue, Die 1 Perf 12½ ACSC #LC18, unused, Cat \$200.	100
2092	PS	A	'COLLINS ST/MELBOURNE' (vertical with trams & Town Hall) <i>Bicolour with the Stamp &amp; Text in purple-brown &amp; the View in dull claret</i> Die 1 Perf 12½ ACSC #LC18, unused, Cat \$200+.	200
2093	PS	A	'COOGEE BEACH SYDNEY' in purple-black & <i>Recut with the Sky Removed</i> in bluish black both Die 1 Perf 12½ ACSC #LC18, unused, Cat \$350. (2)	200
2094	PS	A-/A	'DREDGE AT MYRTLEFORD VIC' in dull blue-green & <i>Recut with the Sky Removed</i> in claret, both used, Cat \$240. [Goldmining] (2)	150
2095	PS	A	'GIN GIN WEST AUST' <i>Bicolour with the Stamp in Claret and the Text &amp; View trending to Purple</i> Die 1 Perf 12½ ACSC #LC18, unused, Cat \$200++.	150

**Lot 2096**

2096	PS	A-	'GIN GIN WEST AUST' <i>Recut with Sky Removed</i> Die 1 Perf 12½ ACSC #LC18, sealed, unused, Cat \$1000. [The ACSC states "...only one unused example is recorded..."]  The workmanship was so poor, people complained that the farmhouse appeared to be on fire!, causing the view to be withdrawn.	500
------	----	----	--	-----

## LETTER CARDS - 1914-18 KGV Sideface 1d (continued)

Lot	Type	Grading	Description	Est \$A
-----	------	---------	-------------	---------



Lot 2097

2097	PS	A	'HARVESTING WEST AUST' (horse-drawn cart) Bicolour with the Stamp & Text and the View trending from black to green Die 1 Perf 12½ ACSC #LC18, unused, Cat \$200+.	200
2098	PS	A	'HUON RIVER TASMANIA' (cargo boat & yacht) Die 1 Perf 12½ ACSC #LC18 original state in purple & later state with Plate Scratch from Top Frame to below 'TA' of 'AUSTRALIA' in blue, both stamp impressions with Long Tail on 'Y' of 'PENNY', unused, Cat \$350. (2)	175



Lot 2099

2099	PS	A	'HUON RIVER TASMANIA' (cargo boat & yacht) Die 1 Perf 12½ ACSC #LC18 original state Tricolour from Brownish Purple to Claret to Dull Purple, unused, Cat \$200+-. [The ACSC states "One example has been seen of a tricolour printing"]	250
2100	PS	A	'MOB OF CATTLE/QUEENSLAND' in grey-black, and with Horizontal Plate Crack at Right-Centre in bluish black both Die 1 Perf 12½ ACSC #LC18, unused, Cat \$350. (2)	240



Lot 2101

2101	PS	A	'MOSMON BAY SYDNEY' (error for 'Mosman') in brown-purple Die 1 Perf 12½ ACSC #LC18, unused, Cat \$250. [This was Cooke's third variation on the theme, and he still couldn't get the spelling right!]	150
2102	PS	A	'MT BUFFALO VICTORIA' (chalet) in deep blue Die 2 Perf 12½ ACSC #LC22, unused, Cat \$200.	100
2103	PS	A	'MT IDA LAKE ST CLAIR/TASMANIA' in green Die 1 Perf 12½ ACSC #LC18, unused, Cat \$175.	80
2104	PS	A	'MURRAY RIVER WEST AUST' (Bridge & Rowboat) Recut with Sky Removed in black Die 1 Perf 12½ ACSC #LC18, unused, Cat \$300. [Considering Cooke's numerous other inscriptional errors, one could almost expect this was an error for South Australia, Victoria or NSW. However, there really is a Murray River in Western Australia]	150

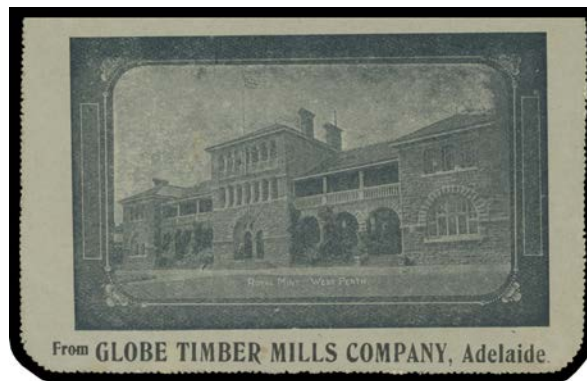
**LETTER CARDS - 1914-18 KGV Sideface 1d (continued)**

Lot Type Grading Description

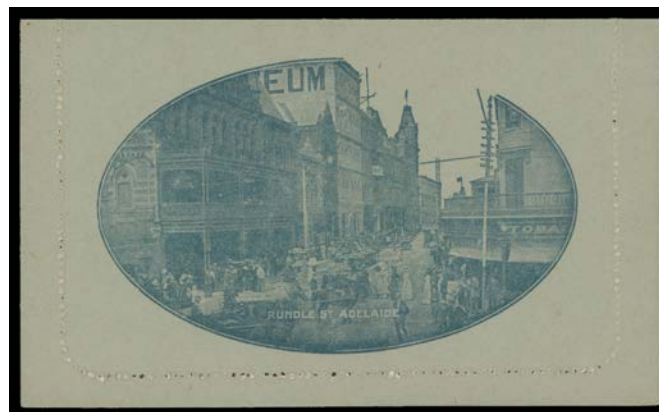
Est \$A

**Lot 2105**

<b>2105</b>	PS	A-	'ORCHARD WEST AUST' in claret Die 1 Perf 12½ ACSC #LC18, minor spots on the address side, unused, Cat \$400. [This view was badly worn - note the "tornado" at upper-left) & was substituted part-way through the print-run]	250
2106	PS	A	'PALL MALL BENDIGO' (tram & fountain) in dull olive-black Die 1 Perf 12½ ACSC #LC18, unused, Cat \$200.	100
2107	PS	A	'PERTH ROAD ARMADALE WA' Original State in black, <i>First Recut with Sky Removed</i> in brown-purple & <i>Second Recut with the Large Tree Reshaped</i> in blue (very fine used) in blue all Die 1 Perf 12½ ACSC #LC18, unused, Cat \$385. (3)	240
2108	PS	A	'PICCADILLY/SOUTH AUSTRALIA' in deep blue Die 1 Perf 12½ ACSC #LC18, unused, Cat \$175.	80
2109	PS	A	'PORT PIRIE/STH AUSTRALIA' (BHP's smelting works) Die 1 Perf 12½ ACSC #LC18, unused, Cat \$175.	80
2110	PS	A	'POST OFFICE SYDNEY NSW' <i>Bicolour with the Stamp &amp; Text in Violet-Black &amp; the View in Purple-Lake</i> Die 1 Perf 10 ACSC #LC17, unused, Cat \$175+.	175
2111	PS	A	'PUBLIC BUILDINGS BENDIGO VIC' in black Die 1 Perf 12½ ACSC #LC18, also <i>Recut with Sky Removed</i> in purple-black, both unused, and a late state with the <i>Flagpole Removed</i> in green (used), Cat \$500. (3)	250

**Lot 2112**

<b>2112</b>	PS	A	'ROYAL MINT WEST PERTH' (rectangle) Die 1 Perf 12½ LC18 overprinted on the view side 'From GLOBE TIMBER MILLS COMPANY, Adelaide' & with <i>pro forma</i> advice within, used Adelaide to Strathalbyn. Rare advertising.	250
-------------	----	---	---	-----

**Lot 2113**

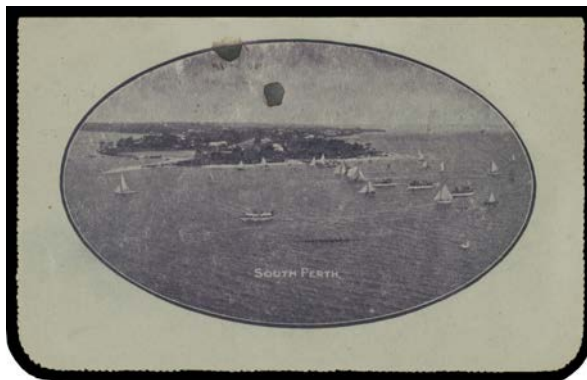
<b>2113</b>	PS	A	'RUNDLE ST ADELAIDE' <i>Recut with Sky Removed</i> in dull greenish blue Die 1 Perf 12½ ACSC #LC18, unused, Cat \$450. A very scarce view.	300
2114	PS	A-	'RUNDLE ST ADELAIDE' <i>Recut with Sky &amp; Part of the Frame Removed</i> Die 1 Perf 12½ ACSC #LC18, unused, Cat \$175.	100
2115	PS	AQ	'RUNDLE ST ADELAIDE' <i>Recut with Sky &amp; Part of the Frame Removed</i> Die 1 Perf 12½ ACSC #LC18, used 'BRACKNELL' (Tas) to "Upper Liffey", Cat \$150.	100
2116	PS	A	'SHIPPING BUTTER BRISBANE' <i>Recut with Sky Removed</i> in dull blue Die 1 Perf 10 ACSC #LC17, unused, Cat \$175. [Recorded only in the recut state]	100



## LETTER CARDS - 1914-18 KGV Sideface 1d (continued)

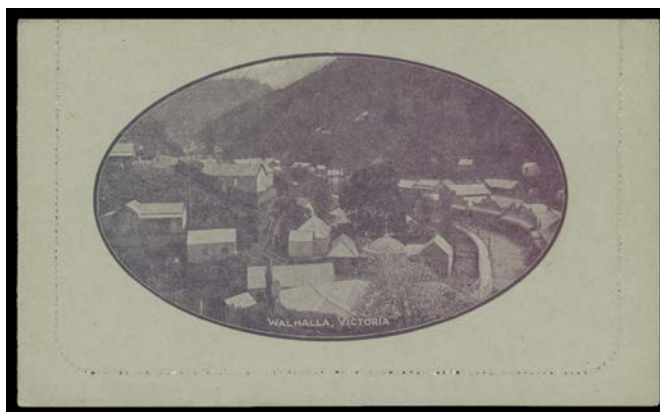
Lot Type Grading Description

Est \$A



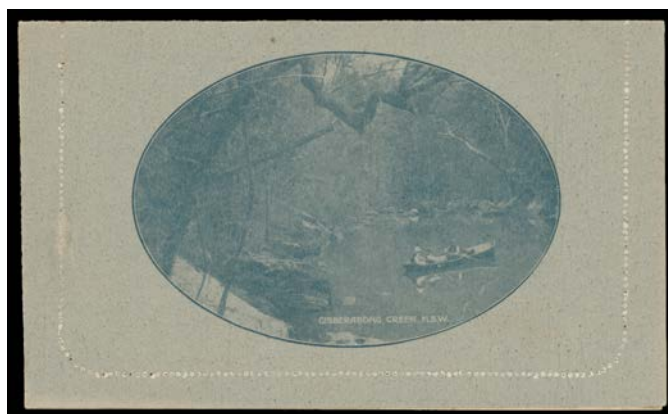
Lot 2117

2117	PS	A-	'SOUTH PERTH' (Yachting Regatta) in dull purple Die 1 Perf 12½ ACSC #LC18, used at Melbourne, a couple of minor ink-blots at top of the view, Cat \$500.	250
2118	PS	A-	'SOUTH PERTH' (Yachting Regatta) <i>Recut with Sky Removed</i> in purple Die 1 Perf 12½ ACSC #LC18, a couple of tiny tonespots, unused, Cat \$250.	125
2119	PS	A	'STURT ST BALLARAT' (tram in foreground), and <i>Recut with Sky Removed</i> both in dull blue Die 1 Perf 12½ ACSC #LC18, unused, Cat \$350. (2)	250
2120	PS	A	'SYDNEY HEADS NSW' (ship passing through) in violet-blue Die 1 Perf 12½ ACSC #LC18, unused, Cat \$250.	125
2121	PS	A	'SYDNEY HEADS NSW' (ship passing through) <i>Recut with the Sky Removed</i> in bright red-violet Die 1 Perf 12½ ACSC #LC18, unused, Cat \$200.	120
2122	PS	A	'TASMAN PENINSULA/TASMANIA' in deep blue Die 1 Perf 12½ ACSC #LC18, unused, Cat \$175.	80
2123	PS	A	'THRESHING WHEAT/QUEENSLAND' Die 1 Perf 12½ ACSC #LC18, unused, Cat \$175. Issued only with "No Sky".	80
2124	PS	A	'TORRENS LAKE/SOUTH AUSTRALIA' (single sculler at lower-left) in dull purple Die 1 Perf 12½ ACSC #LC18, unused, Cat \$200.	100
2125	PS	A	'VINEYARD WEST AUST' in brown-purple Die 1 Perf 12½ ACSC #LC18, unused, Cat \$200.	100



Lot 2126

2126	PS	A	'WALHALLA VICTORIA' (gold mining town) in dull purple Die 1 Perf 12½ ACSC #LC18, unused, Cat \$350.	250
2127	PS	A	<b>Comma after 'Australia,' in the Admonition 'FRUIT EXHIBIT/ADELAIDE SHOW' in blue (Die 1 Perf 12½) &amp; 'HUONVILLE, TASMANIA' in chocolate (Die 2 Perf 10), unused, Cat \$325. [These are the only KGV Sideface views that retained the comma that Cooke was supposed to remove from all electros in 1912] (2)</b>	140



Lot 2128

2128	PS	A	<b>Grey Mottled Stock Die 1 Perf 12½ ACSC #LC2: 'GIBBERABONG CREEK NSW' in dull greenish blue, unused, undercatalogued at \$500. Rare: the ACSC states this issue is found only in shades of purple &amp; brown. [This was Thomas Harrison's first issue of Letter Cards, on stock from James Spicer (London). Most of the views were either new or were smaller versions - 102x70mm - of earlier scenes. This was also the last 1d issue, printed in September 1918, &amp; probably 90%+ of these cards were surcharged 'THREE/HALFPENCE']</b>	500
------	----	---	---	-----