

Lot Type Grading Description Est \$A

LETTER CARDS - 1915 KGV Sideface 1d Military Views

The material in this section comprises the most comprehensive array of these issues ever offered at auction. NB: all of the military view cards have Die 1 stamp impressions.

2129	PS	A	'2nd AIF EMBARKING' (Massed Troops with 'WE'RE HERE' Flag): Plate A ("X" above lifeboats is very close to frame at upper-right) in dull claret, Pink Within ACSC #LC25, unused, Cat \$175. [The scene is of troops waiting to board HMAT A32 'Themistocles' at Port Melbourne]	100
2130	PS	A	- Plate B ("X" above lifeboats is quite evident) in blackish blue, Pink Within ACSC #LC25, unused, Cat \$175.	100
2131	PS	A	- Plate B ("X" above lifeboats is quite evident) in purple-black, Off-White Within ACSC #LC27, unused, Cat \$175.	100



Lot 2132

2132	PS	A	'2nd AIF EMBARKING' (Troops boarding 'A32' HMAT 'Themistocles'): Plate A (complete orb-lamp at left) in green, Pink Within ACSC #LC25, unused, Cat \$175.	100
2133	PS	A	- Plate B (incomplete orb-lamp at left) in blue-black, Pink Within ACSC #LC25, unused, Cat \$175.	100



Lot 2134

2134	PS	B	- Plate B (incomplete orb-lamp at left) with 'A32' Erased from the Plate in blue-black, Off-White Within ACSC #LC27, a few blemishes, unused, Cat \$750. The scarcest of all the Military Views.	400
------	----	---	--	-----



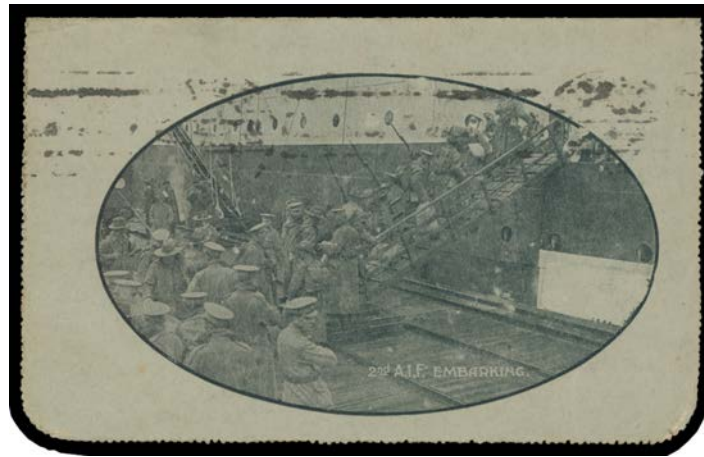
Lot 2135

2135	PS	A	- Plate B (incomplete orb-lamp at left) with 'A32' Removed from the Plate in blue-black, Off-White Within ACSC #LC27, to England, with Melbourne machine cancel of 1APR16, quirkishly endorsed on the 'A32' Void "These cards/have been/recalled", Cat \$400.	300
------	----	---	---	-----

LETTER CARDS - 1915 KGV Sideface 1d Military Views (continued)

Lot Type Grading Description

Est \$A

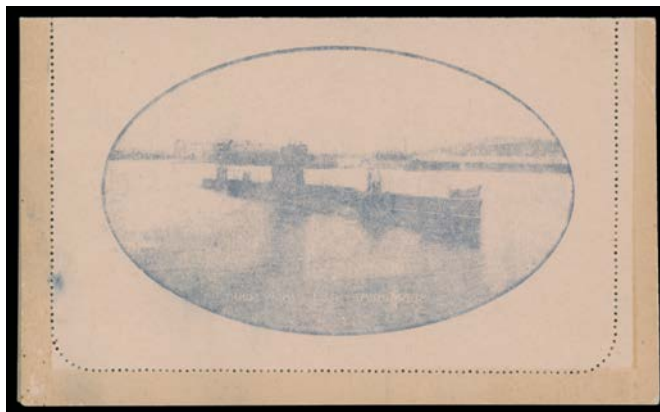
**Lot 2136**

2136	PS	A-	- Plate B (incomplete orb-lamp at left) with 'A32' <i>Removed from the Plate</i> in blue-black, Off-White Within ACSC #LC27, to China with KGV ½d & 1d tied by Perth machine cancels, 'KIUKIANG' arrival cds on the face, a couple of very minor opening defects, Cat \$400.	400
2137	PS	A-	'HMAS MELBOURNE': Plate A (thinner outer frame), minor blemishes; and Plate B (thicker outer frame), sealed; both in blue-black, Pink Within ACSC #LC25, unused, Cat \$350. [See also Lot 2171] (2)	150
2138	PS	A	- Plate B (thicker outer frame) in blue, Off-White Within ACSC #LC27, unused, Cat \$175.	100
2139	PS	A+	'HMAS YARRA ON TRIAL - ON CLYDE': Plate A (Caption 11mm above Base of Oval Frame) <i>Bicolour with the Stamp & Text in purple-black & the View in brown-purple</i> , Pink Within ACSC #LC25, unused, Cat \$175+. Superb!	200
2140	PS	A+	- Plate B (Caption 9mm above Base of Oval Frame) in brown-purple, Pink Within ACSC #LC25, unused, Cat \$175. Superb!	100
2141	PS	A-	- Plate B (Caption 9mm above Base of Oval Frame) in blue-black, Off-White Within ACSC #LC27, a couple of tiny spots on the address-side, unused, Cat \$175.	80
2142	PS	A	'MARCH PAST through streets of MELBOURNE/of AIF' (mounted troops & field ambulances): Plate A ('S' of 'COLES' obscured) in blue-black, Pink Within ACSC #LC25, unused, Cat \$175.	100
2143	PS	A	- Plate B ('COLES' intact) in brown-black, Pink Within ACSC #LC25, unused, Cat \$175.	100
2144	PS	A	- Plate B ('COLES' intact) in indigo, Off-White Within ACSC #LC27, unused, Cat \$175.	100
2145	PS	A	'MARCH through streets of MELBOURNE/of AIF' (infantry): Plate A (Melbourne Town Hall steps missing at U/L) in black, Pink Within Perf 10 ACSC #LC26, unused, Cat \$175.	100
2146	PS	A	- Plate B (Melbourne Town Hall steps at U/L) in black, Pink Within Perf 10 ACSC #LC26, unused, Cat \$175.	100
2147	PS	A-	- Plate B (Melbourne Town Hall steps at U/L) in blue-black, Off-White Within ACSC #LC27, a couple of insignificant tonespots on the address side, unused, Cat \$175.	80
2148	PS	A	'OFF FOR THE SEAT OF WAR': Plate A (ship's bow intersects the frame at left) in black, Pink Within Perf 10 ACSC #LC26, unused, Cat \$175. [HMAT 'A40' <i>Ceramic</i>]	100
2149	PS	A	- Plate B (ship's bow clear of the frame at left) in blackish blue, Pink Within Perf 10 with <i>Text Setting A (Comma after 'Australia,')</i> ACSC #LC26, unused, Cat \$175.	100
2150	PS	A	- Plate B (ship's bow clear of the frame at left) in violet, Off-White Within ACSC #LC27, unused, Cat \$175.	100
2151	PS	A	- Plate B (ship's bow clear of the frame at left) <i>Recut with 'A40' Erased from the Plate</i> in blue-black, Off-White Within ACSC #LC27, with ½d green added for the war tax tied by Hobart machine cancel, Cat \$200. [NB: there is a small flaw in the oval frame at L/L, apparently associated with the removal of 'A40']	120
2152	PS	A	'OFFICERS & CREW.../...of HMAS AUSTRALIA/...': Plate A (thicker frame; 'O' of 'OFFICERS' 5mm from frame) in black-brown, Pink Within ACSC #LC25, unused, Cat \$175.	100
2153	PS	A	- Plate B (thinner frame; 'O' of 'OFFICERS' 2mm from frame) in indigo, Pink Within ACSC #LC25, unused, Cat \$175.	100
2154	PS	A	- Plate B (thinner frame; 'O' of 'OFFICERS' 2mm from frame) in black, Off-White Within ACSC #LC27, unused, Cat \$175.	100
2155	PS	A	'SIGNALLING EXERCISE' (with flags): Plate A (three downpipes on building) in indigo, Pink Within Perf 10 ACSC #LC26, unused, Cat \$175.	100
2156	PS	A	- Plate B (one downpipe on building) in carmine-red (an unusually bright colour for these views), Pink Within Perf 10 ACSC #LC26, unused, Cat \$175.	125
2157	PS	A	- Plate B (one downpipe on building) in blue-black, Off-White Within ACSC #LC27, unused, Cat \$175.	100

LETTER CARDS - 1915 KGV Sideface 1d Military Views (continued)

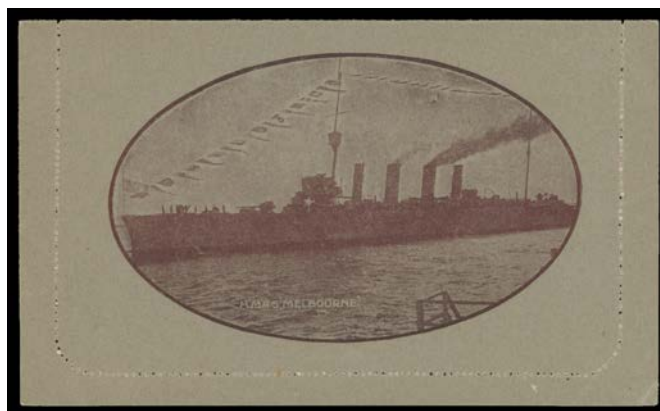
Lot Type Grading Description

Est \$A



Lot 2158

2158	PS	A	'SUBMARINE AE1 (NOW SUNK)' : Plate A (bow of sub 21mm from frame at left) in blue-black, Pink Within with Strong Offset of the Stamp & Text and the View ACSC #LC25c, unused, Cat \$500. The only such error recorded on any of the scenic letter cards. [The ACSC states "One mint example has been seen": illustrated in the ACSC]	500
2159	PS	A	- Plate B (bow of sub 20mm from frame at left) in black, Pink Within ACSC #LC25, unused, Cat \$175.	100
2160	PS	A	- Plate B (bow of sub 20mm from frame at left) in deep blue, Off-White Within ACSC #LC27, unused, Cat \$175. [Submarine AE1 was the <i>Royal Australian Navy's</i> first submarine. Commissioned in England 28.2.1914, she was lost with all hands on 14.9.1914 off the coast of New Guinea. The wreck was discovered only in December 2017]	100
2161	PS	A-	'TROOPS on board/TRANSPORT' (bow of HMAT 'A40' Ceramic) : Plate A (oval frame cuts bow at L/R) <i>Bicolour with the Stamp & Text in black & the View in greenish black</i> , Pink Within ACSC #LC25, faint discolouration on the address side, unused, Cat \$175.	120
2162	PS	A	- Plate B (oval frame clear of bow at L/R) <i>Bicolour with the Stamp & Text in purple-black & the View in dull red-purple</i> , Pink Within Perf 10 ACSC #LC26, unused, Cat \$175.	150
2163	PS	A	- Plate B (oval frame clear of bow at L/R) <i>Recut with 'A40' Removed</i> in grey-black, Off-White Within ACSC #LC27, unused, Cat \$400. [There is now a small flaw in the frame at U/R that probably happened at the same time as the recut]	250
2164	PS	A-	- Plate B (oval frame clear of bow at L/R) <i>Recut with 'A40' Removed</i> in grey-black, Off-White Within ACSC #LC27, the stamp impression with <i>Major Flaws in Wattles at U/L & to Left & L/L of '1' at Left</i> , printed advertising in red for <i>Feldheim Gotthelf Merchants (Sydney)</i> within, a couple of very minor blemishes, unused, Cat \$400+.	250
2165	PS	A	- Plate B (oval frame clear of bow at L/R) <i>Recut with 'A40' Removed</i> in black, Off-White Within ACSC #LC27, the stamp impression with <i>Major Flaws to Left & L/L of '1' at Left</i> , used at Sydney with 'INVEST IN THE/SEVENTH WAR LOAN' slogan, Cat \$200.	100
2166	PS	A	'TROOPS on board TRANSPORT' (stern of HMAT 'A40' Ceramic) : Plate A (part of a fifth porthole at left) in deep blue, Pink Within ACSC #LC25, unused, Cat \$175.	100
2167	PS	A	- Plate B (four portholes) in deep blue, Pink Within ACSC #LC25, unused, Cat \$175.	100
2168	PS	A	- Plate B (four portholes) in greenish black, Off-White Within ACSC #LC27, unused, Cat \$175.	100



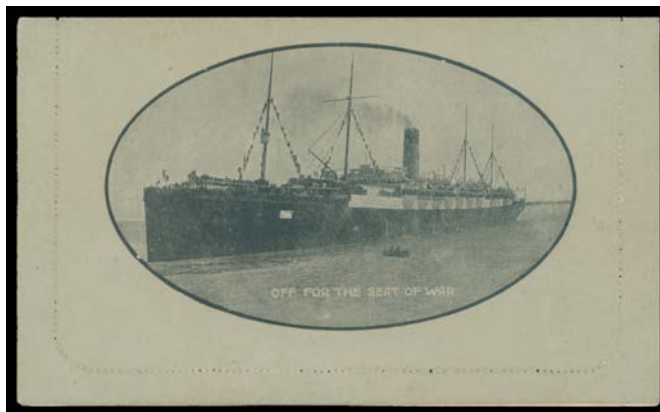
Lot 2169

2169	PS	A	Overprinted 'THREE/HALFPENCE' : 'HMAS MELBOURNE' Plate B (thicker outer frame) <i>Bicolour with the Stamp & Text in purple-black and the View in dull claret</i> Pink Within ACSC #LC40, unused, Cat \$500+. Rare.	500
------	----	---	---	-----

LETTER CARDS - 1915 KGV Sideface 1d Military Views (continued)

Lot Type Grading Description

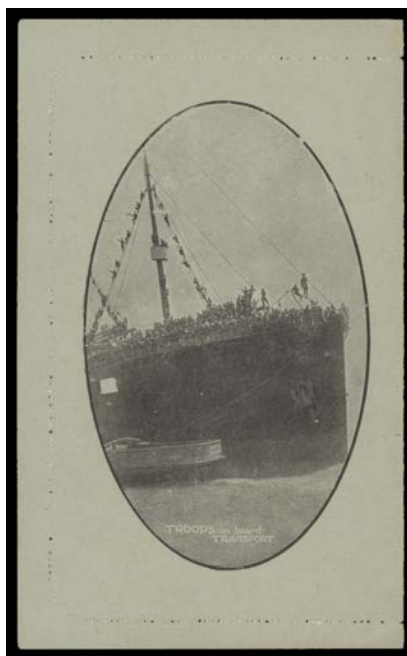
Est \$A



Lot 2170

2170 PS A- - 'OFF FOR THE SEAT OF WAR' Plate B (ship's bow clear of the frame at left) *Recut with 'A40' Removed* in greenish black, Off-White Within ACSC #38, insignificant blemishes, unused, Cat \$500. Rare. [This card is undoubtedly on unsurfaced stock, and is unlisted thus]

400



Lot 2171

2171 PS A- - 'TROOPS on board/TRANSPORT' (bow of HMAT 'A40' Ceramic) Plate B (ship's bow clear of the frame at left) *Recut with 'A40' Removed* in black-brown, Off-White Within ACSC #LC39, the stamp impression with *Major Flaws to Left & L/L of '1' at Left*, insignificant blemishes, unused, Cat \$500. Rare: **the only recorded example.**

500