

Lot Type Grading Description

Est \$A

NEW SOUTH WALES - Postal History

From this point in the sale, with the exception of very few lots from other vendors, all the material is from the 'Tamiami' Collection previously housed in 84 large albums.



Lot 243

243 CL B 1840 mission outer to London with light but very fine rounded-boxed 'PARRAMATTA/POST PAID' h/s in red & very fine oval 'PARRAMATTA/[crown]/OC*7/1840/NEW.S.WALES' b/s, Sydney transits & London arrival backstamp of 18FE18/1841 in red.

250^T

Lot 244

244 C B A1+ 1841 cover to Devon with superb framed-oval 'YASS/[crown]/OC*30/1841/NEW.S.WALES' d/s unusually on the face with equally fine rounded-boxed 'YASS/POST PAID' h/s in red, Sydney & Liverpool transits & 'PLYMOUTH/AP14/1842' arrival b/s, minor defects. 5½ months in transit.

250^T

Lot 245

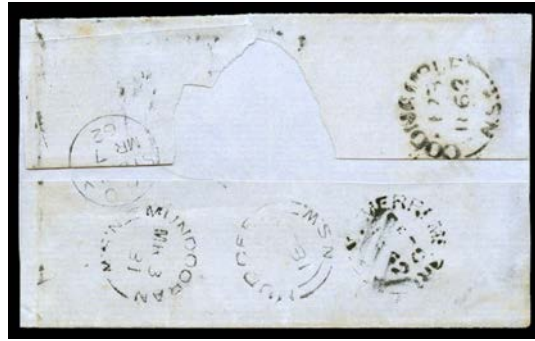
245 CL B 1848 OHMS outer with 'Colonial Storekeeper's Office' imprint at L/L, light '[crown]/FREE/MY*25/1848' d/s in red & framed-oval 'MARULAN/[crown]/MY*27/1848/NEW.S.WALES' arrival b/s.

150^T

NEW SOUTH WALES - Postal History (continued)

Lot Type Grading Description

Est \$A

**Lot 246**

246 C B **1862** cover to Sydney with unframed 'MERRI MERRI/FE28/1862/NSW' b/s, similar 'COONAMBLE', 'MUNDOORAN' & 'MUDGEE' transit b/s. Merri Merri PO 1.1.1861; renamed Quambone 4.4.1871.

150^T**Lot 247**

247 C B **1881** large piece from 'The Sydney Mail' to Northumberland with DLR 1d tied by very fine 'SYDNEY/ C /SP19/1881/ 2 /-NSW=' cds, docketting including "3 Letters & Newspaper all Rec'd today", a few minor problems. Very scarce international newspaper usage.

150

**Lot 248**

248 C A- **1885** World Publishing Co envelope to New York "via Frisco" with DLR 6d pair tied by two fine strikes of Rays '697' (#3R12) and 'WILLIAM STREET/AP24/1885/NSW' unframed b/s, Sydney 'PAID ALL' oval cachet on face to indicate no inwards US steamship fee payable, 'CHICAGO' transit on face & 'PENN YAN,NY/MAY/27/RECD' arrival b/s, couple of minor blemishes.

100

NEW SOUTH WALES - Postal History (continued)

Lot Type Grading Description

Est \$A



Lot 249

249 C B 1891 *Orient Line (Sydney)* envelope to Melbourne (b/s) with 2d Emu x2 & 10d violet - rarely seen on cover - paying seven-times 2d per 1oz inter-Colonial rate tied by Sydney duplex cancels, shortened at right & at left. 100



Lot 250

250 PS A - Centennial 1d violet Waratah Postal Card to Germany with 1d Centennial tied by 'THE EXCHANGE' duplex, taxed with Sydney 'T' inverted triangle cachet, Bavarian 'KB BAHNPOST' TPO d/s on face, rated "4d/80" [pfennig] postage due in blue pencil on arrival. [The pre-UPU Europe 6d ship letter rate should have been paid because the 2d treaty postcard rate applied only to the United Kingdom] 150



Lot 251

251 C A- 1895 cover to *George Adams* in Brisbane with 2d Emu only with 'MORE TO PAY ("3D")' h/s & officially registered for containing coin, BN '1133' & 'CARRATHOOL' cds. [Mail to *Tattersalls* during their short time in Brisbane is very scarce] 200^T

NEW SOUTH WALES - Postal History (continued)

Lot Type Grading Description

Est \$A

**Lot 252**

252 PS A- **1898** triple-rate Registration Envelope to Japan with 'SEVEN-PENCE/HALPENNY' on 6d brown tied by 'R' in oval 'REGISTERED/JY16/98/SYDNEY NSW' cds, 'NAGASAKI/19/AUG/98/JAPAN' transit and local arrival b/s, couple of minor blemishes. Scarce franking and destination.

200

**Lot 253**

253 PS B - use of 3d Registration Envelope - Flap at Left - with ½d & 1d pairs & 2d tied by Maitland duplex, 'RIO DE JANEIRO' transit & 'S PAULO' arrival b/s, a little stained. Scarce destination.

100^T**Lot 254**

254 C A- **1899** Carrington Hotel (Katoomba) illustrated advertising envelope with vignette view of hotel, to England with ½d & 2d tied by two slightly indistinct strikes of BN '1036', 'KATOOMBA' cds & 'LEEDS/FE20/99' squared circle arrival b/s, minor blemishes.

100

NEW SOUTH WALES - Postal History (continued)

Lot Type Grading Description

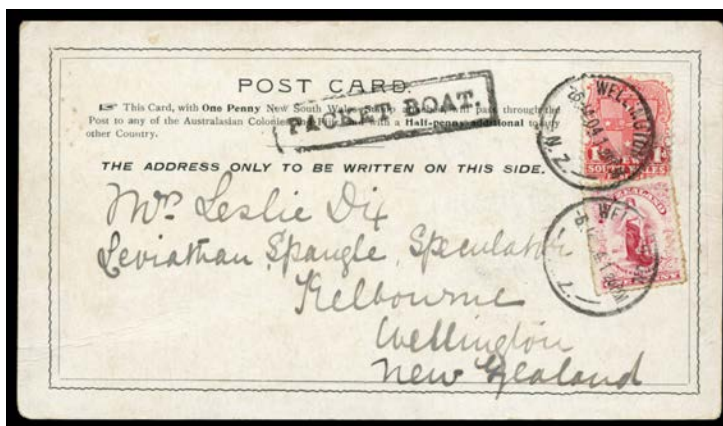
Est \$A



Lot 255

255 C A- - cover to Finland with 1/2d & 2d tied by two fine strikes of BN '54' (type 4B) and 'PYRMONT/NSW' cds alongside, St Petersburg (Russia) transit in blue and Borga arrival b/s, a couple of very minor blemishes.

150



Lot 256

256 C A- 1903 PPC ('Triumphbogen' = Federation Arch) PPC to New Zealand posted directly onto ship with 1d Arms and NZ 1d Universal both tied 'WELLINGTON-5JA04/NZ' arrival cds, double-framed 'PACKET BOAT' h/s of Auckland alongside, minor blemishes. The [NZ stamp paid the late fee]

200



Lot 257

257 PS A- 1905 use of 2d QV STO Envelope with Resch's Waverley Brewery buildings illustration on face, to Portugal with QV 1/2d tied Sydney cds, 'PORTO CENTRAL/6-9-05' arrival b/s, couple of minor blemishes.

200

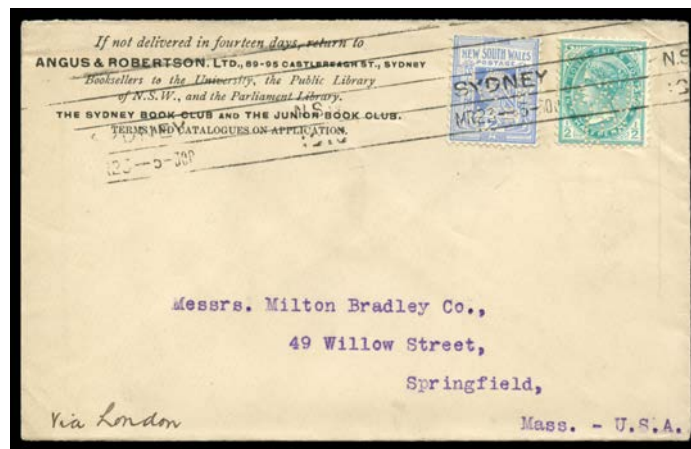
NEW SOUTH WALES - Postal History (continued)

Lot Type Grading Description

Est \$A

**Lot 258**

258 C A **1908** cover to USA with ½d & 1d pair tied by BN '1756' of 'CAL LAL' (cds alongside) with 'WENTWORTH' & Adelaide transit b/s. Far Western mails were routed through Adelaide rather than Sydney.

100^T**Lot 259**

259 C A **1910** Angus & Robertson 'Booksellers to the University, the Public Library of NSW, and the Parliamentary Library' cover to USA endorsed "via London" with ½d & 2d both punctured 'A&R/LTD' tied Sydney machine.

100

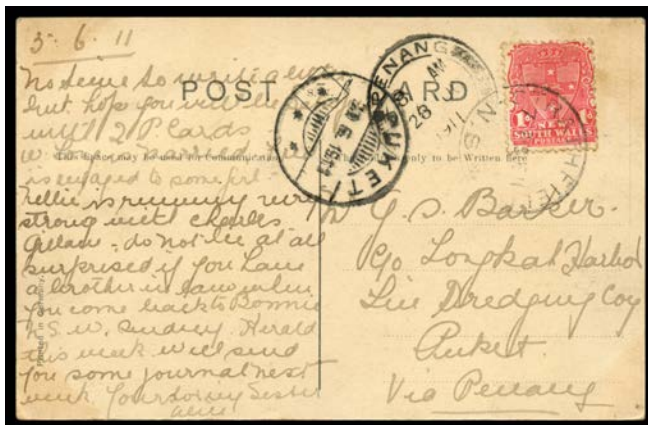
**Lot 260**

260 PS A- **1911** use of 1½d Letter Card uprated with 1d & 2½d, Sydney to Holland with 'LATE FEE PAID/G.P.O.' cachet on face, a couple of minor blemishes. [2½d foreign rate + 2½d late fee at full letter rate]

100

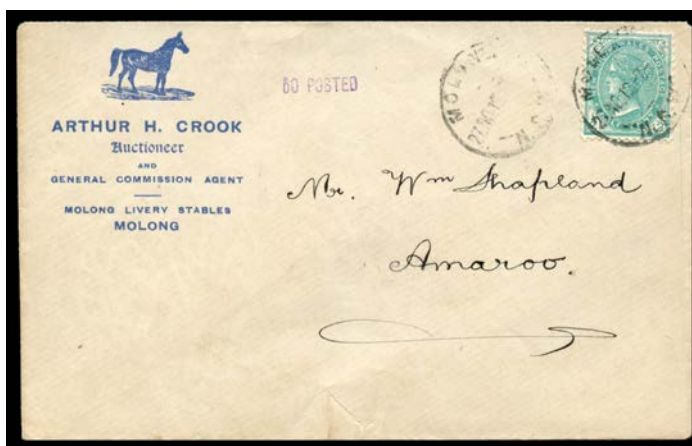
NEW SOUTH WALES - Postal History (continued)

Lot Type Grading Description Est \$A



Lot 261

261 C A- - PPC ('Coogee Beach') to Thailand with 1d only tied 'STRATHFIELD' cds but not taxed, 'PENANG/28JU/1911' transit and 'PUKET/30.6.1911' arrival d/s alongside, couple of very minor blemishes. Scarce destination. 100



Lot 262

262 C (A-) 1912 Arthur H Crook illustrated advertising envelope (horse), to Amaroo with private '50 POSTED' cachet to qualify for circular rate and 1/2d green solo franking tied by 'MOLONG' cds, minor blemishes & small repaired tear at base. 100



Lot 263

263 C A- - (Dec 26) cover from Monaco with lovely 'HOTEL DES PRINCES/MONTE-CARLO' imprint on the flap, to Lismore with 'ENGLISH MAIL NSW' machine b/s & very scarce Lismore machine cancel on the face, redirected to "Wilson's Hotel/Watson's Bay". The only pre-1930s cover we have seen from Monaco to Australia. 150^T