

Lot Type Grading Description

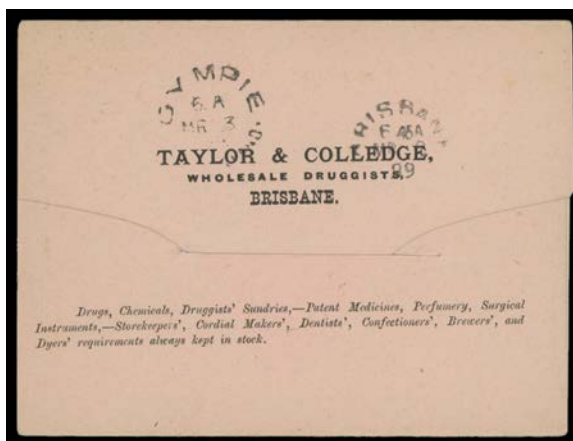
Est \$A

QUEENSLAND - ADVERTISING COVERS



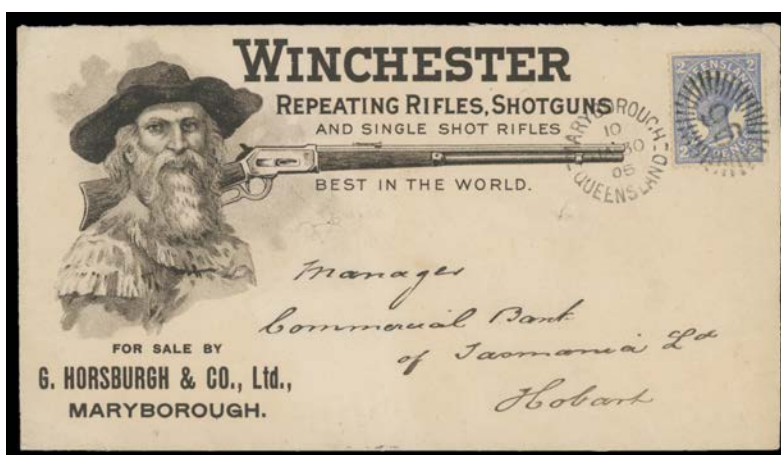
Ex Lot 156

156 CPS **Mostly illustrated covers** x14, 1d Postal Card & a lettersheet, including for *Queen's Hotel Brisbane* (1870), *Wallace Hirst & Co Clothing Manufacturers* (1903), *Masonic Grand Lodge of Queensland* (1902), *Avena Porridge* (1904), *Velvet Soap* (1913), *TH Wood Seed Merchant* (1913), etc, some interest in the postal markings, six are *Tatts* covers (three of which are registered), condition variable but a most attractive & desirable lot. **(15)** 500



Lot 157

157 C A- **1899** lettersheet for *Taylor & Colledge Wholesale Druggists* with illustrations inside of their Queen's Head trademark & the firm's 4-storey premises, to Gympie with 1d tied 'TOOWOOMBA' cds, small repaired tear on the flap. 200



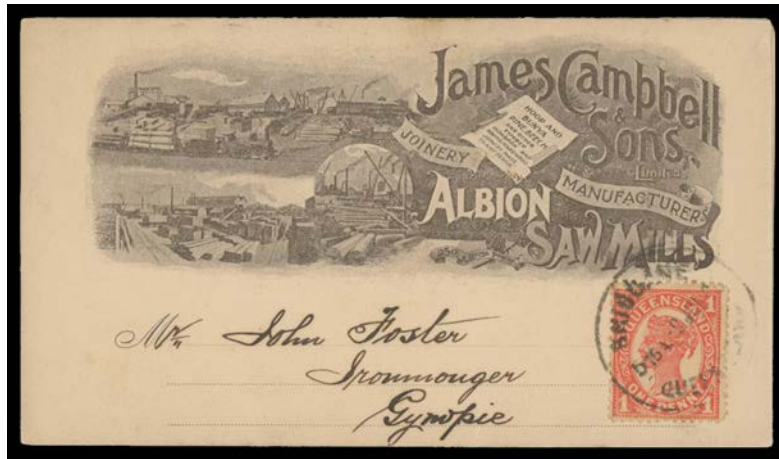
Lot 158

158 C (A-) **1905** (Jan 30) *Winchester Repeating Rifles* illustrated cover of a *Buffalo Bill*-type & his rifle with 'G. Horsburgh & Co Ltd, Maryborough' imprint at L/L, to Hobart with 2d tied by very fine 'MARYBOROUGH - 96' duplex, two different TPO b/s. A famous design & one of the best of the early Australian productions. [*Hugh Campbell's* similar but registered example sold for \$1176] 500

QUEENSLAND - ADVERTISING COVERS (continued)

Lot Type Grading Description

Est \$A

**Lot 159**

159 C A- **1910** lettersheet for *James Campbell & Sons Albion Saw Mills* with elaborate illustration & adverts on reverse including for Asbestos Mixed Paints (!), Cattle Wash, Refrigerators, etc, light discolouration on back. Gorgeous!

100