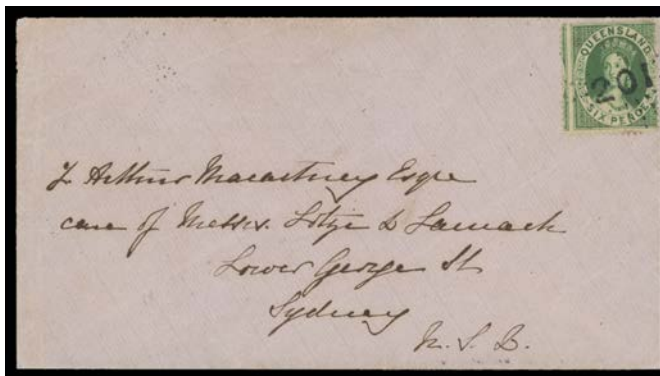


Lot Type Grading Description

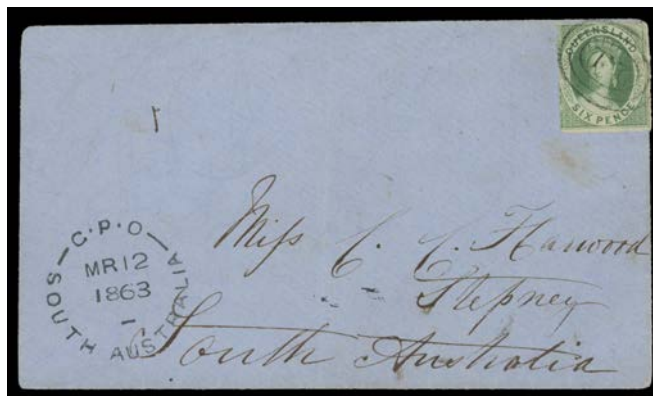
Est \$A

**QUEENSLAND - INTER-COLONIAL MAIL****Lot 39**

**39** C A- **1861** (Dec 26; Boxing Day) *Macartney* cover to Sydney with very fine but misperforated *Chalons* Clean-Cut Perf 6d SG 9 with bold Rays '201' of 'ROCKHAMPTON' (b/s), Sydney arrival b/s of JA7/62, light bend at U/L. Pretty: did they celebrate Boxing Day in the 1860s? [Until 19.2.1871, the inter-colonial rate was 6d per ½oz] 1,000

**Lot 40**

**40** C B **1862** (Apr 1; *April Fools' Day*) outer to Victoria with Clean-Cut Perf 6d SG 9 - exceptional centring - tied by partial Rays '87' cancel of 'IPSWICH' (superb b/s), fine Brisbane transit b/s & Melbourne arrival b/s of AP11/62 in red, minor blemishes. *Ex Bernie Beston*. [Stated to be **the earliest recorded Queensland Chalons cover to Victoria**] 1,250

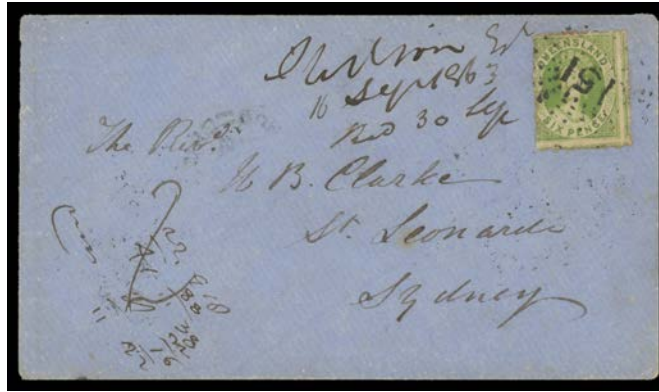
**Lot 41**

**41** C A- **1863** (Feb 28) cover to "Stepney/South Australia" with *Chalons* Rough Perf 6d SG 17 tied by 'QL'-in-concentric-ovals of Brisbane (b/s), superb 'GPO/MR12/1863/SOUTH AUSTRALIA' arrival cds on the face. *Ex Bernie Beston*. [Stated to be **the only recorded cover between Queensland & South Australia** at the 6d inter-colonial rate] 1,500

## QUEENSLAND - INTER-COLONIAL MAIL (continued)

Lot Type Grading Description

Est \$A



Lot 42

- 42** C A- - (Sep 19) cover to NSW with *Chalons* No Wmk 6d apple-green SG 26 tied by very fine Rays '151' of 'CONDAMINE' (b/s), 'BRISBANE' & very fine 'SHIP LETTER/=SYDNEY=' transits & superb 'ST LEONARDS/SP30/1863/=NSW=' arrival b/s, docketing on the face.

400



Lot 43

- 43** C A- **1864** (Aug 2) cover to NSW endorsed "Per Telegraph" with *Chalons* No Wmk 6d apple-green SG 26 tied by 'QL'-in-Rays (ERD), very fine 'SHIP-LETTER/=QUEENSLAND=' and large-part 'SHIP-LETTER/=SYDNEY=' transits and large-part 'PARRAMATTA/AU4/1864/=NSW=' arrival b/s, insignificant blemishes.

500



Lot 44

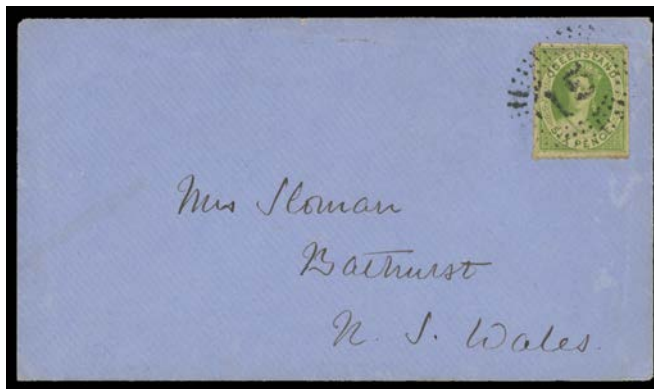
- 44** C A - (Oct 7) cover to NSW with scarce franking of very fine *Chalons* 2d strip of 3 tied by equally fine Rays '15' cancels (rated RR) of 'PORT DENISON' (largely very fine b/s; rated RRRR), Brisbane & superb 'SHIP-LETTER/=SYDNEY=' transits & light 21mm 'BATHURST/NO4/1864/=NSW=' arrival b/s. A handsome cover. Port Denison PO 1.1.1861; renamed Bowen late-1865.

800

## QUEENSLAND - INTER-COLONIAL MAIL (continued)

Lot Type Grading Description

Est \$A



Lot 45

45	C	A	1865 (Sep 5) cover to NSW with <i>Chalons</i> 6d apple-green tied by Rays '15' cancels (rated RR) of 'PORT DENISON' (b/s; rated RRRR), light Brisbane & 'SHIP-LETTER/=SYDNEY=' transits & light 22mm 'BATHURST/SE28/1865/NSW' arrival b/s. [Very late usage of the Port Denison cds which was renamed Bowen late-1865]	400
46	CL	B	1867 (Nov 14) cover front to NSW with 'CROWN LANDS OFFICE/("14.11.67")/BRISBANE' cachet at L/L and <i>Chalons</i> 6d yellow-green (surface fault) tied by 'QL'-in-Rays cancel, Type 3 'BRISBANE/QUEENSLAND' cds with code '3' (stated to be <b>the only recorded example</b> ), Sydney arrival cds of NO16/1867 plus boxed 'NOT KNOWN BY THE/LETTER CARRIERS' h/s in red & 'ADVERTISED/UNCLAIMED' h/s, a few blemishes.	250



Lot 47

47	C	A-	1869 (Aug 19) cover to NSW with attractive franking of <i>Chalons</i> 1d orange-vermilion x2 & 2d pale blue x2 tied by poor 'QL'-in-Rays cancels of Brisbane (b/s), Sydney & West Maitland transit & 'WOLLOMBI/AU26/=NSW=' arrival b/s. Very pretty. <i>Ex Richard Stevenson</i> : acquired in 2003 for SFr767.	750
----	---	----	---	-----



Lot 48

48	C	B	1870 (Apr 9) triple-rate cover to Sydney with <i>Chalons</i> 6d apple-green x3 & 6d 'REGISTERED' yellow tied by poor Rays of 'GYMPIE' (b/s), very fine 'REGISTERED/GYMPIE' h/s in red (rated RRRR), minor blemishes. Only four examples of the 2-line h/s recorded. [Gold Mining]	2,000
----	---	---	---	-------

## QUEENSLAND - INTER-COLONIAL MAIL (continued)

Lot Type Grading Description

Est \$A



Lot 49

- 49** PS B 1871 (Aug 4) cover to NSW with *Chalons* 3d brown tied by poor Rays cancel of 'SURAT' (fine 21mm b/s; rated RRRR), transit b/s of 'ST GEORGE' (23mm; rated RRRRR), 18mm Type 4 'BRISBANE/ a ' (ERD) & Sydney plus very fine 'WINDSOR/AU14/1871=NSW=' arrival b/s, minor blemishes. [On 20.2.1871, the 6d rate to NSW was reduced to 2d overland or 3d by sea. Surat is 420km almost due west of Brisbane]

400



Lot 50

- 50** C A - (Aug 18) double-rate *Macartney* cover to NSW with *Chalons* 2d strip of 3, indistinct cancels of 'MARYBOROUGH' (c/s alongside), 'ROCKHAMPTON' transit & Sydney arrival b/s.

500



Lot 51

- 51** C A- 1873 (Apr 19) cover to Woolloomooloo with *Chalons* Perf 13 1d & 2d tied by poor Rays '24' of 'BANANA' (fine cds alongside), Rockhampton & Brisbane transit & Sydney arrival b/s, flap removed.

500



Lot 52

- 52** C A- - (July 30) to "Lockyersleigh/Carrick NSW" with the letter written on the back of the envelope! & endorsed "via Roma". *Chalons* 3d tied by indistinct Rays cancel of 'CUNNAMULLA' (light but obvious b/s; rated RRRRR), transit b/s of Brisbane & Sydney. PO 1.3.1868. [This cds is the **only recorded example** & the earliest d/s known from this office by 10 years. Cunnamulla is almost 900km due W of Brisbane. Lockyersleigh Homestead is at Brayton, 190km SW of Sydney]

400

## QUEENSLAND - INTER-COLONIAL MAIL (continued)

Lot Type Grading Description

Est \$A



Lot 53

53	C	B	- (Dec 30) mourning cover to NSW with <i>Chalons</i> 3d greenish brown tied by partial very fine Rays '[6]3' of 'CLERMONT' (very fine cds alongside), Rockhampton & Sydney transit b/s and fine strike of the scarce 'BOURKE-STREET/=NSW=' arrival b/s, some aging. [Clermont is almost 1000km NW of Brisbane, inland from Rockhampton. Sydney's Bourke Street PO 1.6.1859; replaced by Surry Hills (2) 15.9.1883]	300
----	---	---	--	-----



Lot 54

54	C	A	1878 (June 26) <i>Germain Nicholson</i> cover to Victoria with <i>Chalons</i> 2d tied by a poor strike of BN '279' (rated RRRR) of 'MILES' (very fine cds alongside), 'CHINCHILLA' transit & Melbourne arrival b/s. [Miles is 300km NW of Brisbane]	250
55	CL	B	1879 (Jan 22) sextuple-rate linen-lined cover to NSW with rare franking of <i>Chalons</i> Perf 12 2d strips of 3 x2 - one stamp torn on opening - tied by two poor & two fine strikes of BN '275' (rated RRRRR), 'MUTTABURRA' cds (with quatrefoils; ERD; rated RRRR) alongside, transit b/s of Rockhampton (superb) & Sydney & fine 'PENRITH/FE11/1879/=NSW=' arrival b/s. PO 25.1.1878. [Muttaborra is almost 1200km NW of Brisbane, NNE of Longreach. It was the discovery site of one of Australia's largest dinosaurs, the <i>Muttaborrasaurus</i> . Yes...seriously!]	600



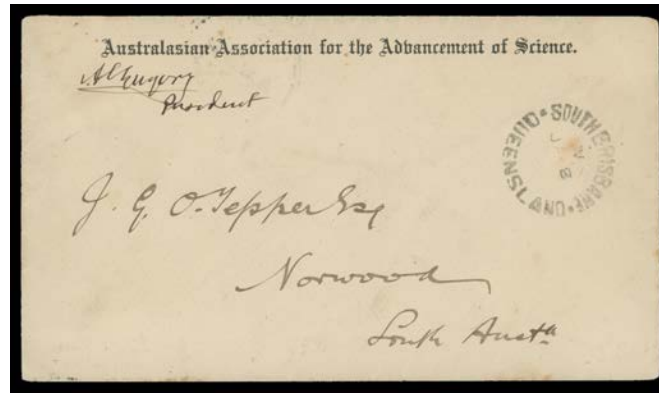
Lot 56

56	C	A	- (Sep 20) double-rate mourning cover to "Tharwa/Lanyon/NSW" with <i>First Sidefaces</i> 2d bright blue SG 139 x2 tied by Rays '63' of 'BOWEN' (fine cds below), transit b/s of Brisbane Sydney & Queanbeyan & light 'LANYON/NSW' arrival cds on the face. [Lanyon Homestead & Tharwa are in the ACT, south of Canberra. Lanyon PO 1.5.1860; replaced by Tharwa 1.2.1882]	300
----	---	---	---	-----

## QUEENSLAND - INTER-COLONIAL MAIL (continued)

Lot Type Grading Description

Est \$A



## Lot 57

**57** C A- **1885** (Jan 8) stampless cover with 'Australasian Association for the Advancement of Science' header over signature of "AC Gregory/President", to South Australia with 'TPO/A---/QUEENSLAND' & Adelaide transits and 'NORWOOD' arrival b/s, very minor blemishes. A most unusual free-privilege cover. [Sir Augustus Charles Gregory was an explorer, politician, philanthropist & masonic Grand Master]

400



## Lot 58

**58** D C **1898** wrapper-front with 'LEGISLATIVE ASSEMBLY PAPERS.' header, to the *Belgian Consulate* in Melbourne with somewhat doubled strike of the rare oval 'GOVERNMENT PRINTING OFFICE/FRANK/21JUN98/STAMP/QUEENSLAND' d/s in violet, the piece aged & with a repaired tear at upper-left. [Hans Karman recorded only this one example but wrongly stated it was dated 'JUL93' instead of 'JUN98'.

100



## Lot 59

**59** C B **1901** (Mar 21) Tatts cover with 1d and 2d pair tied by poor BN, very fine double-oval 'MOUNT MORGAN/QUEENSLAND' d/s & large-part '[R]EGISTERED/[MO]UNT MORGAN' handstamp, minor blemishes. PO 18.5.1885. [Gold Mining. Mount Morgan is 640km NNW of Brisbane, 38km S of Rockhampton]

200

## QUEENSLAND - INTER-COLONIAL MAIL (continued)

Lot Type Grading Description

Est \$A



Ex Lot 60

- 60** C A-/B 1901-04 registered *Tatts* covers from towns on the Queensland/NSW border, all with Queensland stamps, comprising 1) 1d & 2d x2 tied by 'BARRINGUN/NSW' cds; 2) 1d x5 tied by indistinct NSW BN of 'YALPUNGA/NSW'; 3) 1d x5 tied by Qld BN '365' but with 'HUNGERFORD/NSW' b/s; 4) 1d & 2d x2 with light Qld Rays '52' but with 'MUNGINDI/NSW' b/s; & 5) 1d & 2d pair with Qld BN '327' & 'REGISTERED/MUNGINDI' h/s but NSW cds b/s. A fascinating group. (5)

500



Ex Lot 61

- 61** C A-/B 1903-07 *Tatts* covers with very fine to superb two-line 'REGISTERED/KINGSBOROUGH', '.../THORNSBOROUGH' & '.../WOLFRAM'. [Gold Mining: all POs on the Hodgkinson Goldfield, inland from Cairns] (3)

250



Lot 62

- 62** C A- 1904 (Aug 28) *Tatts* cover with 5d unusually tied by one of two largely very fine strikes of the 'REGISTERED/TATE TIN MINES' h/s, large-part 'TATE TIN MINES' cds below. RO 1881; PO 1893. [The Tate River Tin Mines are 1850km NNW of Brisbane at the base of Cape York]

200