

Lot Type Grading Description

Est \$A

SOUTH AUSTRALIA - Postal History**Lot 752**

- 752** C A **1845** (Jan 30) duplicate missionary's entire headed "Felixstow nr Adelaide" & signed "Thos Q Stow" with an unusually fine strike of the huge '[crown]/GENERAL POST OFFICE/ADELAIDE/SA' d/s across the flap & London arrival b/s of 4JU4/1845 in red, hinge remains at the base of the front otherwise superb! [Rev'd Thomas Quinton Stow arrived at Adelaide October 1837 per 'Hartley' & was elected the first Congregational pastor in the Colony. He was widely regarded as Adelaide's outstanding preacher]

250^T**Lot 753**

- 753** C D **1849** (Sep 2) distressed but facially appealing entire to London "pr Inconstant Via Callao Via Panama" amended to "Pr Princess Louise Via Singapore Via Overland" with large-part double-circle 'POST OFFICE/[crown]/PORT ADEL[AIDE]' h/s & GPO cds, London b/s of 26DE26/1849 (Boxing Day) & 'WHITEHAVEN' arrival b/s of the next day. [Two most unusual routings on the one item!]

200^T**Lot 754**

- 754** C A **1851** (Sep 9) entire headed "Aberdeen near Kooringa" & signed "Richard Randall" to Adelaide with very fine 24mm 'KOORINGA/=SOUTH-AUSTRALIA' cds (rated RR), Mss "4" in red & very fine strike of the now worn '[crown]/PAID/184-' d/s in red (#CrPd-1; **the only recorded strike with year only**). [Copper Mining]

250^T**Ex Lot 755**

- 755** C B **1854** cover with large GPO cds & very fine 'MORPHETT-VALE/("Mr 16")/1854/SOUTH-AUSTRALIA' arrival b/s (rated RRRR), minor blemishes. With the letter headed "HM Gaol/Adelaide" which states "...I have just come off duty..." (2 items)

250^T

SOUTH AUSTRALIA - Postal History (continued)

Lot Type Grading Description

Est \$A



Lot 756

756 C A- **1858** (Aug 18) mercantile entire to "Carl W Spengler/Mount Charles/Woodside" with fair 'INVERBRACKIE' transit (rated RR) & superb 'CHARLESTON/AU("20")/1858/=SOUTH-AUSTRALIA=' arrival b/s (RRRRR; the later of **only two recorded examples**), multiple redirections & cds of 'BALHANNAH' (SP16; RRRR), 'KANMANTOO' (18SP & OC2; RRR) & 'MOUNT BARKER/SA' (OC27; RRR), finally with superb vertical double-oval 'ADVERTISED UNCLAIMED/ NO30/1858/ADELAIDE' d/s on the face. A remarkable combination of Adelaide Hills cds.

500^T



Lot 757

757 C B - (Aug 6) stampless cover with fine 'MORPHETT-VALE/AU("6")/1858/SOUTH-AUSTRALIA' cds & "4d paid" in red, GPO arrival b/s & very fine 'A /PAID/ 1 ' h/s in red (#PdM-1; ERD).

150^T

758 C A- **1886** entire to Yorkshire with 6d pale ultramarine (*Dry Print* ?) & DLR 2d tied by superb framed 'MURRAY BRIDGE' cds.

100^T



Lot 759

759 PS (A-) **1889** use of 1d(+1d) Message Half with 'O.S.' Overprint with 'THEBARTON SCHOOL' printed truancy notice adapted to request a teacher transfer, very fine 'MILE END' squared-circle (rated RR), closed spikehole.

150^T



Lot 760

760 C A **1894** OHMS cover with *Tax Office* imprint at L/L & curious printed 'PARCEL ONLY/...' at U/L, 1d with 'O.S.' Overprint tied by GPO diplex, largely fine 'RAILWAY/ 2 /FE21/94/S-A' transit b/s. [Sent unsealed to take advantage of the concessional Printed Matter rate]

150^T

SOUTH AUSTRALIA - Postal History (continued)

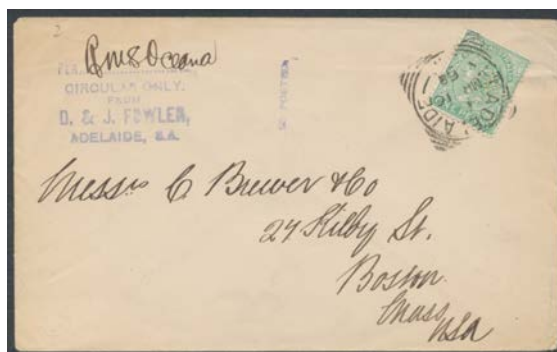
Lot Type Grading Description

Est \$A



Lot 761

761 PS A 1897 uprated Postal Card with 'MONARTO' cds, to Argentina with large 'CLASIFICACION/2 ROSARIO 2' arrival b/s.

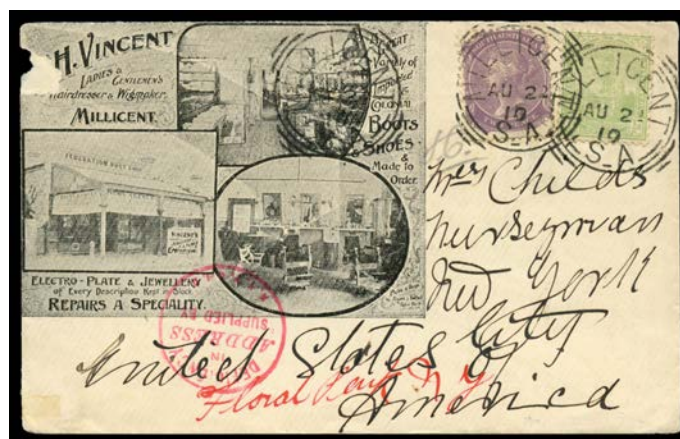
100^T

Lot 762

762 C A 1899 D&J Fowler cover to USA (flap unsealed) with 'PER RMS Oceania/CIRCULAR ONLY' and tiny '20 POSTED' cachets and 1d green 'D&J/F' private perfin tied 'PT ADELAIDE/MR16/99/SA' squared circle paying bulk-mailing printed matter rate, fine condition.

150

763 C B 1909 cover to "Buffalo NY" [sic] with 1d & 2d tied by boxed 'LATE FEE' h/s, Melbourne transit b/s of 20.1.09, slightly truncated at left. [Weird! The letter rate was 2½d, as was the late fee, so postage should have been 5d. Nor was it taxed. Are we missing something?]

100^T

Lot 764

764 C B 1910 cover with illustrated adverts for Vincent's Store (Millicent) to the USA with ½d & 2d tied by 'MILLICENT' squared-circle, small fault at U/L.

100^T

SOUTH AUSTRALIA - Postal History (continued)

Lot	Type	Grading	Description	Est \$A
-----	------	---------	-------------	---------

**Lot 765**

765	PS	A-	WRAPPERS: 1909 (Feb 2) usage of 1/2d violet with large 'OHMS' Overprint above 'COMMONWEALTH OF AUSTRALIA' Header & printed 'THE HEAD TEACHER/....SCHOOL', to "Beetaloo" with largely fine 'BEETALOO VALLEY' squared-circle arrival b/s (rated RR), neat fold at the base. A rare provisional issue that was absent from the <i>Martin Walker/Nelson Eustis</i> collection.	400 ^T
------------	----	----	---	------------------